

Lampiran 1 : Bukti Mengikuti IT (UB), Bebas Plagiasi, Mengikuti Toefl (UB), Kelayakan Etik

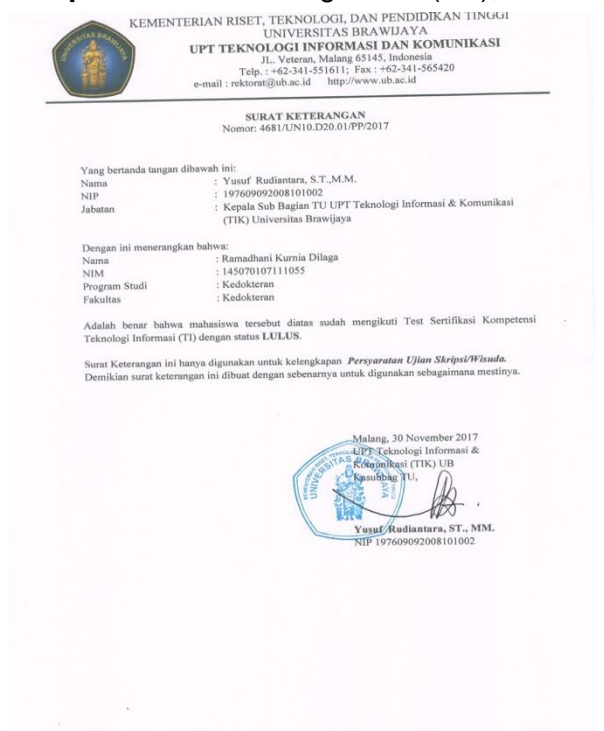


Foto 1. Surat keterangan mengikuti IT (UB)



Foto 2. Surat Keterangan Plagiasi



Foto 3. Surat keterangan mengikuti TOEFL (UB)



Foto 4. Surat keterangan layak etik

LAMPIRAN

Lampiran 2 : Jenis Lalat *Chrysomya megacephala*



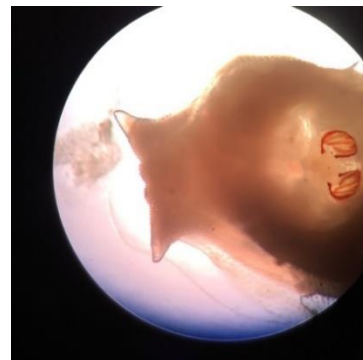
Gambar 1. Pupa *Chrysomya Megacephala*



Gambar 2. Jumlah pupa yang ditemukan

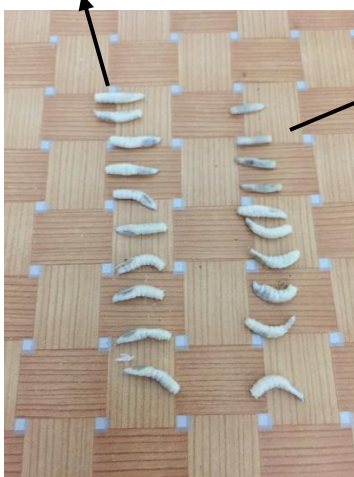


Gambar 3. Lalat *Chrysomya megacephala* dewasa



Gambar 4. Spirakel posterior stadium 3

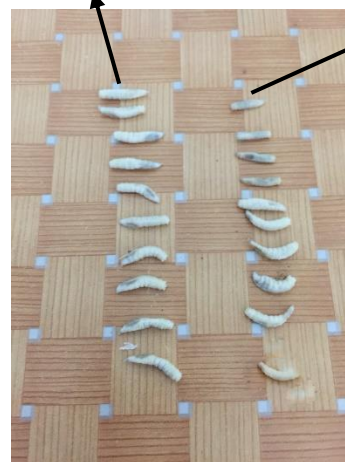
Larva ditemukan di media sianida



Gambar 5. Larva pengamatan pagi

Larva ditemukan di media tanpa sianida

Larva ditemukan di media sianida



Gambar 6. Larva pengamatan sore

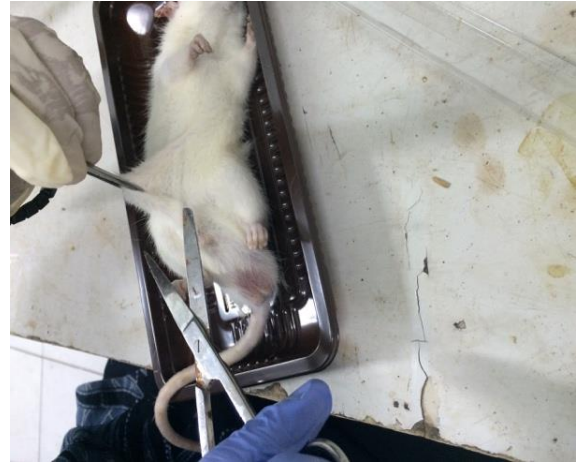
Larva ditemukan di media tanpa sianida

Lampiran 3 : Alat dan Bahan**Gambar 1.** Jangka sorong**Gambar 2.** Tikus Wistar**Gambar 3.** Sianida yang akan di gerus**Gambar 4.** Pinset, Penggaris besi, Silet, Gelas objek**Gambar 6.** Pemanas air**Gambar 7.** 2 Kandang lalat 40 cm x 40 cm

Lampiran 4 : Pelaksanaan Penelitian



Gambar 1. Tikus diberikan Sianida secara per oral



Gambar 2. Persiapan membuat irisan tikus



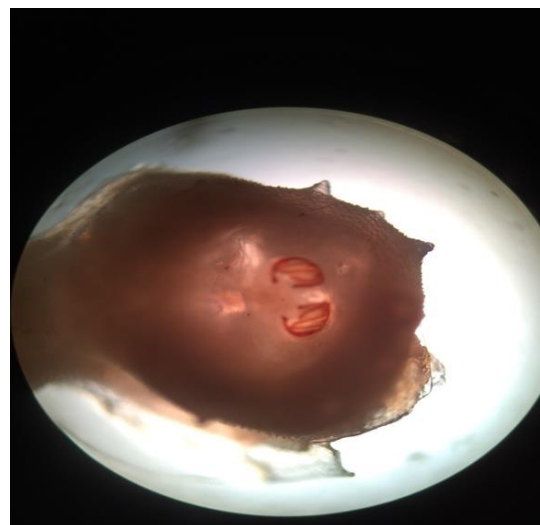
Gambar 3. Tikus diiris dari leher sampai anus



Gambar 4. Proses pencarian larva



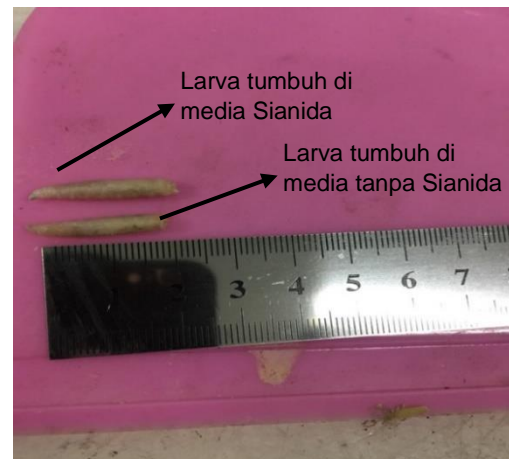
Gambar 5. Beberapa larva yang ditemukan



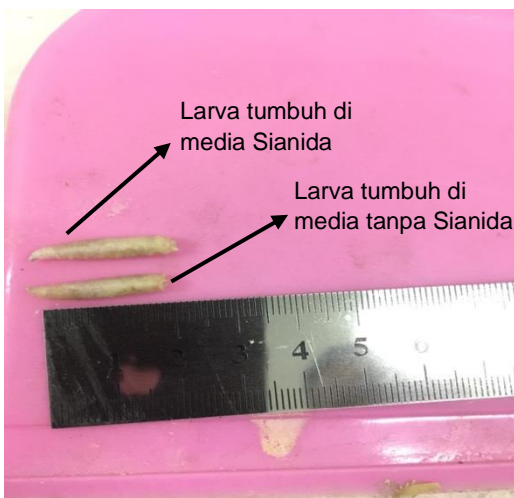
Gambar 6. Spirakel posterior larva stadium 3



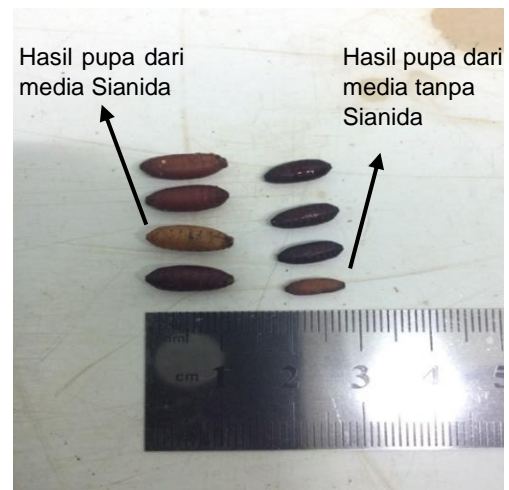
Gambar 7. Larva yang di timbang (mg)



Gambar 8. Larva yang dibandingkan (mm)



Gambar 9. Larva yang dibandingkan (mm)



Gambar 10. Jumlah pupa yang ditemukan



Gambar 11. Pupa dari media Sianida



Gambar 12. Lalat *Chrysomya megacephala* dewasa

Lampiran 5 :Asumsi Normalitas Data Panjang Larva *Chrysomya megachepala* pada Jaringan Tikus Mati

Hari ke-	<i>Kolmogorov Smirnov Z</i>	Probabilitas
1b	0.662	0.773
2a	0.878	0.423
2b	0.812	0.525
3a	0.691	0.725
3b	1.491	0.023
4a	1.368	0.047
4b	1.170	0.130
5a	1.303	0.067
5b	1.289	0.072
6a	1.378	0.045
6b	1.357	0.050
7a	0.333	0.000
7b	0.334	0.000
8a	0.314	0.000
8b	0.314	0.000
9a	0.314	0.000

One-Sample Kolmogorov-Smirnov Test

		panjang_1b	panjang_2a	panjang_2b	panjang_3a	panjang_3b
N		20	20	20	20	20
Normal Parameters ^{a,b}	Mean	1,7500	2,6400	5,0050	7,9520	10,4110
	Std. Deviation	,20131	,19304	1,32723	1,38772	1,72612
Most Extreme Differences	Absolute	,148	,196	,182	,155	,333
	Positive	,148	,116	,182	,155	,333
	Negative	-,122	-,196	-,143	-,105	-,290
Kolmogorov-Smirnov Z		,662	,878	,812	,691	1,491
Asymp. Sig. (2-tailed)		,773	,423	,525	,725	,023

a. Test distribution is Normal.

b. Calculated from data.

One-Sample Kolmogorov-Smirnov Test

		panjang_4a	panjang_4b	panjang_5a	panjang_5b	panjang_6a	panjang_6b
N		20	20	20	20	20	20
Normal Parameters ^{a,b}	Mean	13,5650	14,4550	16,2850	16,9900	18,7800	19,2650
	Std. Deviation	1,58190	,92080	1,33782	,98723	1,24037	1,36392
Most Extreme Differences	Absolute	,306	,262	,291	,288	,308	,303
	Positive	,306	,262	,291	,288	,308	,303
	Negative	-,283	-,258	-,253	-,264	-,295	-,253
Kolmogorov-Smirnov Z		1,368	1,170	1,303	1,289	1,378	1,357
Asymp. Sig. (2-tailed)		.047	.130	.067	.072	.045	.050

a. Test distribution is Normal.

b. Calculated from data.

One-Sample Kolmogorov-Smirnov Test

		panjang_7a	panjang_7b	panjang_8a	panjang_8b	panjang_9a
N		20	20	20	20	20
Normal Parameters ^{a,b}	Mean	15.6375	15.9175	12.5375	12.5375	12.5375
	Std. Deviation	3.19526	3.47151	.07759	.07759	.07759
	Absolute	.333	.334	.314	.314	.314
Most Extreme Differences	Positive	.333	.334	.210	.210	.210
	Negative	-.289	-.320	-.314	-.314	-.314
Test Statistic		.333	.334	.314	.314	.314
Asymp. Sig. (2-tailed)		.000 ^c	.000 ^c	.000 ^c	.000 ^c	.000 ^c

a. Test distribution is Normal.

b. Calculated from data.

c. Lilliefors Significance Correction.

Lampiran 6 : Analisis Perbedaan Panjang Larva *Chrysomya megachepala* Pada Jaringan Tikus Mati Yang Disebabkan Keracunan Sianida Dibandingkan Jaringan Tikus Mati Secara Normal

Hari ke - 1b

Independent Samples Test

	Levene's Test for Equality of Variances		t-test for Equality of Means						
	F	Sig.	t	df	Sig. (2-tailed)	Mean Difference	Std. Error Difference	95% Confidence Interval of the Difference	
								Lower	Upper
panjang_1b	,619	,442	-	18	,074	-,16000	,08446	-	,01744
			1,894						
			-	17,392	,075	-,16000	,08446	-	,01789
			1,894						

Hari ke - 2a

Independent Samples Test

	Levene's Test for Equality of Variances		t-test for Equality of Means						
	F	Sig.	t	df	Sig. (2-tailed)	Mean Difference	Std. Error Difference	95% Confidence Interval of the Difference	
								Lower	Upper
panjang_2a	,392	,539	-	18	,502	-,06000	,08756	-	,12396
			,685						
			-	17,538	,502	-,06000	,08756	-	,12430
			,685						

Hari ke - 2b

Independent Samples Test

	Levene's Test for Equality of Variances		t-test for Equality of Means						
	F	Sig.	t	df	Sig. (2-tailed)	Mean Difference	Std. Error Difference	95% Confidence Interval of the Difference	
								Lower	Upper
panjang_2b	5,820	,027	-	18	,001	-1,77000	,44478	-	-
			3,979					2,70446	,83554
panjang_2b	5,820	,027	-	13,623	,001	-1,77000	,44478	-	-
			3,979					2,72645	,81355

Hari ke – 3a

Independent Samples Test

	Levene's Test for Equality of Variances		t-test for Equality of Means						
	F	Sig.	t	df	Sig. (2-tailed)	Mean Difference	Std. Error Difference	95% Confidence Interval of the Difference	
								Lower	Upper
panjang_3a	,736	,402	-	18	,000	-2,40400	,29237	-	-
			8,222					3,01826	1,78974
panjang_3a	,736	,402	-	17,570	,000	-2,40400	,29237	-	-
			8,222					3,01933	1,78867

Hari ke – 3b

Test Statistics

	panjang_3b
Mann-Whitney U	,000
Wilcoxon W	55,000
Z	-3,853
Asymp. Sig. (2-tailed)	,000
Exact Sig. [2*(1-tailed Sig.)]	,000 ^b

a. Grouping Variable: kelompok_perlakuan

b. Not corrected for ties.

Hari ke – 4a

Independent Samples Test

		Levene's Test for Equality of Variances		t-test for Equality of Means						
		F	Sig.	t	df	Sig. (2-tailed)	Mean Difference	Std. Error Difference	95% Confidence Interval of the Difference	
									Lower	Upper
panjang_4a	Equal variances assumed	1,533	,232	44,887	18	,000	-3,07000	,06839	3,21369	2,92631
	Equal variances not assumed			44,887	17,630	,000	-3,07000	,06839	3,21391	2,92609

Hari ke – 4b

Independent Samples Test

	Levene's Test for Equality of Variances		t-test for Equality of Means						
	F	Sig.	t	df	Sig. (2-tailed)	Mean Difference	Std. Error Difference	95% Confidence Interval of the Difference	
								Lower	Upper
panjang_4b	1,684	,211	-	18	,000	-1,75000	,09410	-	-
			18,596					18,596	16,085
			-					-	-
			18,596	16,085	,000	-1,75000	,09410	1,94941	1,55059

Hari ke – 5a

Independent Samples Test

	Levene's Test for Equality of Variances		t-test for Equality of Means						
	F	Sig.	t	df	Sig. (2-tailed)	Mean Difference	Std. Error Difference	95% Confidence Interval of the Difference	
								Lower	Upper
panjang_5a	,064	,803	-	18	,000	-2,57000	,10440	-	-
			24,616					24,616	17,811
			-					-	-
			24,616	17,811	,000	-2,57000	,10440	2,78951	2,35049

Hari ke – 5b

Independent Samples Test

	Levene's Test for Equality of Variances		t-test for Equality of Means							
	F	Sig.	t	df	Sig. (2-tailed)	Mean Difference	Std. Error Difference	95% Confidence Interval of the Difference		
								Lower	Upper	
Equal variances assumed	,709	,411	-26,348	18	,000	-1,90000	,07211	-2,05150	-1,74850	
Equal variances not assumed			-26,348	17,709	,000	-1,90000	,07211	-2,05168	-1,74832	

Hari ke – 6a

Test Statistics

	panjang_6a
Mann-Whitney U	,000
Wilcoxon W	55,000
Z	-3,879
Asymp. Sig. (2-tailed)	,000
Exact Sig. [2*(1-tailed Sig.)]	,000 ^b

- a. Grouping Variable: kelompok_perlakuan
b. Not corrected for ties.

Hari ke – 7a

Test Statistics

	panjang_7a
Mann-Whitney U	.000
Wilcoxon W	55.000
Z	-3.940
Asymp. Sig. (2-tailed)	.000
Exact Sig. [2*(1-tailed Sig.)]	.000 ^b

- a. Grouping Variable: kelompok_perlakuan
b. Not corrected for ties.

Hari ke – 6b

Test Statistics

	panjang_6b
Mann-Whitney U	,000
Wilcoxon W	55,000
Z	-3,838
Asymp. Sig. (2-tailed)	,000
Exact Sig. [2*(1-tailed Sig.)]	,000 ^b

- a. Grouping Variable: kelompok_perlakuan
b. Not corrected for ties.

Hari ke – 7b

Test Statistics

	panjang_7b
Mann-Whitney U	.000
Wilcoxon W	55.000
Z	-3.940
Asymp. Sig. (2-tailed)	,000
Exact Sig. [2*(1-tailed Sig.)]	.000 ^b

- a. Grouping Variable: kelompok_perlakuan
b. Not corrected for ties.

Hari ke – 8a**Test Statistics**

	panjang_8a
Mann-Whitney U	28.500
Wilcoxon W	83.500
Z	-1.719
Asymp. Sig. (2-tailed)	.086
Exact Sig. [2*(1-tailed Sig.)]	.105 ^b

a. Grouping Variable: kelompok_perlakuan

b. Not corrected for ties.

Hari ke – 8b**Test Statistics**

	panjang_8a
Mann-Whitney U	28.500
Wilcoxon W	83.500
Z	-1.719
Asymp. Sig. (2-tailed)	.086
Exact Sig. [2*(1-tailed Sig.)]	.105 ^b

a. Grouping Variable: kelompok_perlakuan

b. Not corrected for ties.

Hari ke – 9a**Test Statistics**

	panjang_9a
Mann-Whitney U	28.500
Wilcoxon W	83.500
Z	-1.719
Asymp. Sig. (2-tailed)	.086
Exact Sig. [2*(1-tailed Sig.)]	.105 ^b

a. Grouping Variable: kelompok_perlakuan

b. Not corrected for ties.

Lampiran 7 : Asumsi Normalitas Data Berat Larva *Chrysomya megachepala* Pada**Jaringan Tikus Mati**

Hari ke-	Kolmogorov Smirnov Z	Probabilitas
2b	0.285	0.000
3a	0.329	0.000
3b	0.334	0.000
4a	0.333	0.000
4b	0.330	0.000
5a	0.333	0.000
5b	0.332	0.000
6a	0.328	0.000
6b	0.321	0.000
7a	0.335	0.000
7b	0.335	0.000
8a	0.335	0.000
8b	0.335	0.000
9a	0.335	0.000

One-Sample Kolmogorov-Smirnov Test

		berat_2b	berat_3a	berat_3b	berat_4a	berat_4b
N		20	20	20	20	20
Normal Parameters ^{a,b}	Mean	51.2600	121.4130	238.8500	657.6600	680.0950
	Std. Deviation	3.99742	25.52044	50.07706	118.89005	80.61078
Most Extreme Differences	Absolute	.285	.329	.334	.333	.330
	Positive	.285	.329	.334	.333	.330
	Negative	-.182	-.321	-.296	-.330	-.301
Test Statistic		.285	.329	.334	.333	.330
Asymp. Sig. (2-tailed)		.000 ^c	.000 ^c	.000 ^c	.000 ^c	.000 ^c

- a. Test distribution is Normal.
 b. Calculated from data.
 c. Lilliefors Significance Correction.

One-Sample Kolmogorov-Smirnov Test

		berat_5a	berat_5b	berat_6a	berat_6b	berat_7a
N		20	20	20	20	20
Normal Parameters ^{a,b}	Mean	647.1980	693.9750	694.1400	666.7095	526.1970
	Std. Deviation	74.45511	44.90562	26.73301	8.60806	85.77719
Most Extreme Differences	Absolute	.333	.332	.328	.321	.335
	Positive	.333	.332	.328	.321	.335
	Negative	-.333	-.332	-.326	-.305	-.333
Test Statistic		.333	.332	.328	.321	.335
Asymp. Sig. (2-tailed)		.000 ^c	.000 ^c	.000 ^c	.000 ^c	.000 ^c

- a. Test distribution is Normal.
 b. Calculated from data.
 c. Lilliefors Significance Correction.

One-Sample Kolmogorov-Smirnov Test

		berat_7b	berat_8a	berat_8b	berat_9a
N		20	20	20	20
Normal Parameters ^{a,b}	Mean	466.1630	431.4225	431.4225	431.4225
	Std. Deviation	24.18423	11.45970	11.45970	11.45970
Most Extreme Differences	Absolute	.335	.335	.335	.335
	Positive	.335	.335	.335	.335
	Negative	-.330	-.333	-.333	-.333
Test Statistic		.335	.335	.335	.335
Asymp. Sig. (2-tailed)		.000 ^c	.000 ^c	.000 ^c	.000 ^c

- a. Test distribution is Normal.
 b. Calculated from data.
 c. Lilliefors Significance Correction.

Lampiran 8 : Analisis Perbedaan Berat Larva *Chrysomya megachepala* Pada Jaringan Tikus Mati Yang Disebabkan Keracunan Sianida Dibandingkan Jaringan Tikus Mati Secara Normal

Hari ke - 2b

Test Statistics ^a	
	berat_2b
Mann-Whitney U	.000
Wilcoxon W	55.000
Z	-3.811
Asymp. Sig. (2-tailed)	.000
Exact Sig. [2*(1-tailed Sig.)]	.000 ^b

- a. Grouping Variable:
kelompok_perlakuan
- b. Not corrected for ties.

Hari ke – 3a

Test Statistics ^a	
	berat_3a
Mann-Whitney U	.000
Wilcoxon W	55.000
Z	-3.798
Asymp. Sig. (2-tailed)	.000
Exact Sig. [2*(1-tailed Sig.)]	.000 ^b

- a. Grouping Variable:
kelompok_perlakuan
- b. Not corrected for ties.

Hari ke – 3b

Test Statistics ^a	
	berat_3b
Mann-Whitney U	.000
Wilcoxon W	55.000
Z	-3.822
Asymp. Sig. (2-tailed)	.000
Exact Sig. [2*(1-tailed Sig.)]	.000 ^b

- a. Grouping Variable:
kelompok_perlakuan
- b. Not corrected for ties.

Hari ke – 4a

Test Statistics ^a	
	berat_4a
Mann-Whitney U	.000
Wilcoxon W	55.000
Z	-3.790
Asymp. Sig. (2-tailed)	.000
Exact Sig. [2*(1-tailed Sig.)]	.000 ^b

- a. Grouping Variable:
kelompok_perlakuan
- b. Not corrected for ties.

Hari ke – 4b

Test Statistics ^a	
	berat_4b
Mann-Whitney U	.000
Wilcoxon W	55.000
Z	-3.792
Asymp. Sig. (2-tailed)	.000
Exact Sig. [2*(1-tailed Sig.)]	.000 ^b

- a. Grouping Variable:
kelompok_perlakuan
- b. Not corrected for ties.

Hari ke – 5a

Test Statistics ^a	
	berat_5a
Mann-Whitney U	.000
Wilcoxon W	55.000
Z	-3.794
Asymp. Sig. (2-tailed)	.000
Exact Sig. [2*(1-tailed Sig.)]	.000 ^b

- a. Grouping Variable: kelompok_perlakuan
- b. Not corrected for ties.

Hari ke – 5b

Test Statistics ^a	
	berat_5b
Mann-Whitney U	.000
Wilcoxon W	55.000
Z	-3.785
Asymp. Sig. (2-tailed)	.000
Exact Sig. [2*(1-tailed Sig.)]	.000 ^b

- a. Grouping Variable:
kelompok_perlakuan
- b. Not corrected for ties.

Hari ke – 6a

Test Statistics ^a	
	berat_6a
Mann-Whitney U	.000
Wilcoxon W	55.000
Z	-3.784
Asymp. Sig. (2-tailed)	.000
Exact Sig. [2*(1-tailed Sig.)]	.000 ^b

- a. Grouping Variable:
kelompok_perlakuan
- b. Not corrected for ties.

Hari ke – 6b

Test Statistics ^a	
	berat_6b
Mann-Whitney U	.000
Wilcoxon W	55.000
Z	-3.788
Asymp. Sig. (2-tailed)	.000
Exact Sig. [2*(1-tailed Sig.)]	.000 ^b

- a. Grouping Variable:
kelompok_perlakuan
- b. Not corrected for ties.

Hari ke – 7a

Test Statistics ^a	
	berat_7a
Mann-Whitney U	.000
Wilcoxon W	55.000
Z	-3.869
Asymp. Sig. (2-tailed)	.000
Exact Sig. [2*(1-tailed Sig.)]	.000 ^b

- a. Grouping Variable:
kelompok_perlakuan

Hari ke – 7b

Test Statistics ^a	
	berat_7b
Mann-Whitney U	.000
Wilcoxon W	55.000
Z	-3.866
Asymp. Sig. (2-tailed)	.000
Exact Sig. [2*(1-tailed Sig.)]	.000 ^b

- a. Grouping Variable:
kelompok_perlakuan
- b. Not corrected for ties.

Hari ke – 8a

Test Statistics ^a	
	berat_8a
Mann-Whitney U	.000
Wilcoxon W	55.000
Z	-3.950
Asymp. Sig. (2-tailed)	.000
Exact Sig. [2*(1-tailed Sig.)]	.000 ^b

- a. Grouping Variable:
kelompok_perlakuan
- b. Not corrected for ties.

Hari ke – 8b

Test Statistics ^a	
	berat_8b
Mann-Whitney U	.000
Wilcoxon W	55.000
Z	-3.950
Asymp. Sig. (2-tailed)	.000
Exact Sig. [2*(1-tailed Sig.)]	.000 ^b

a. Grouping Variable:

kelompok_perlakuan

b. Not corrected for ties.

Hari ke – 9a

Test Statistics ^a	
	berat_9a
Mann-Whitney U	.000
Wilcoxon W	55.000
Z	-3.950
Asymp. Sig. (2-tailed)	.000
Exact Sig. [2*(1-tailed Sig.)]	.000 ^b

a. Grouping Variable:

kelompok_perlakuan

b. Not corrected for ties.