

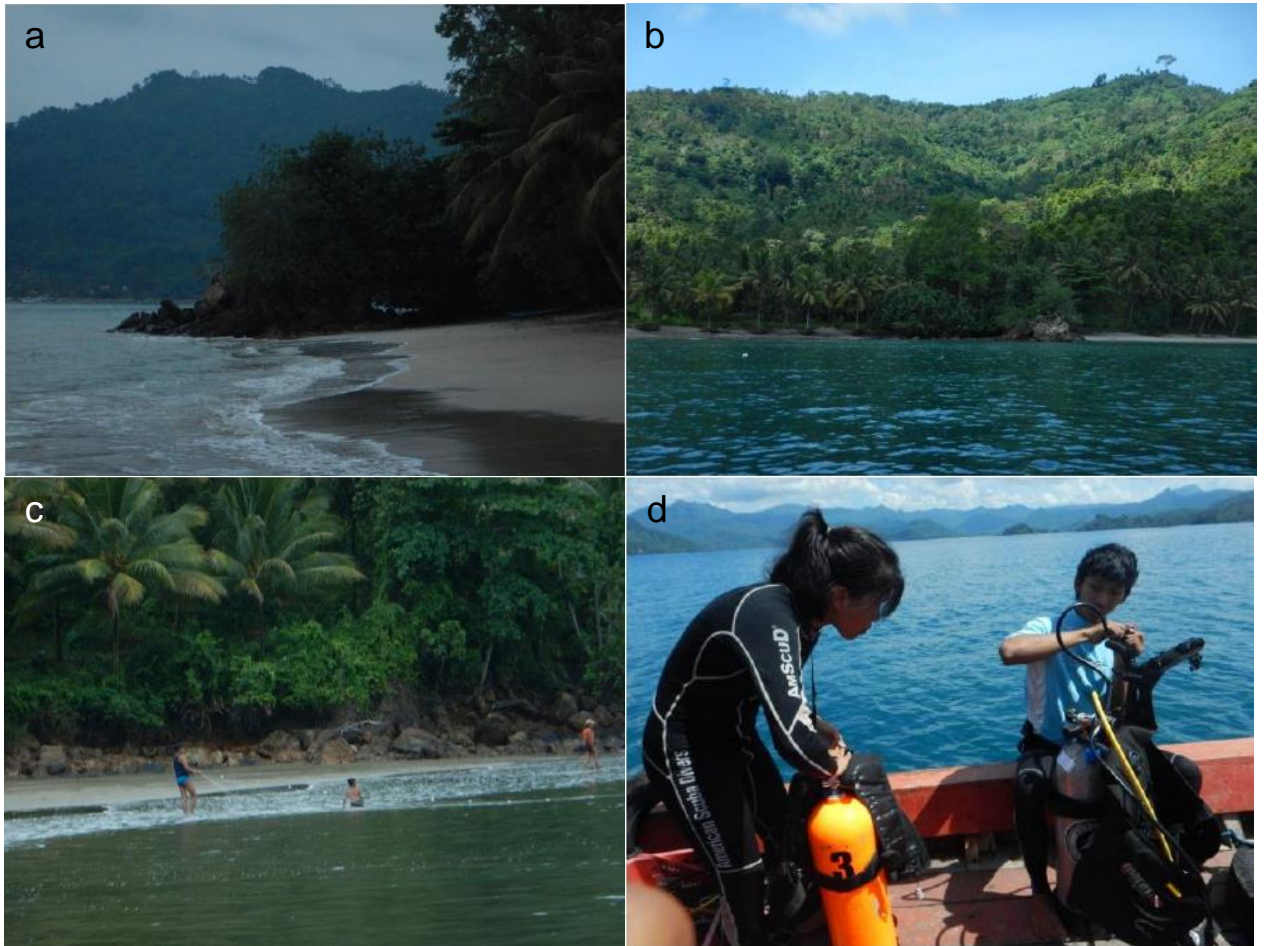
LAMPIRAN

Lampiran 1. Pengambilan Data Parameter Fisika



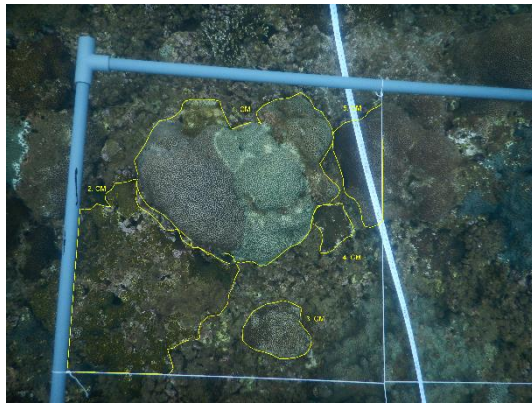
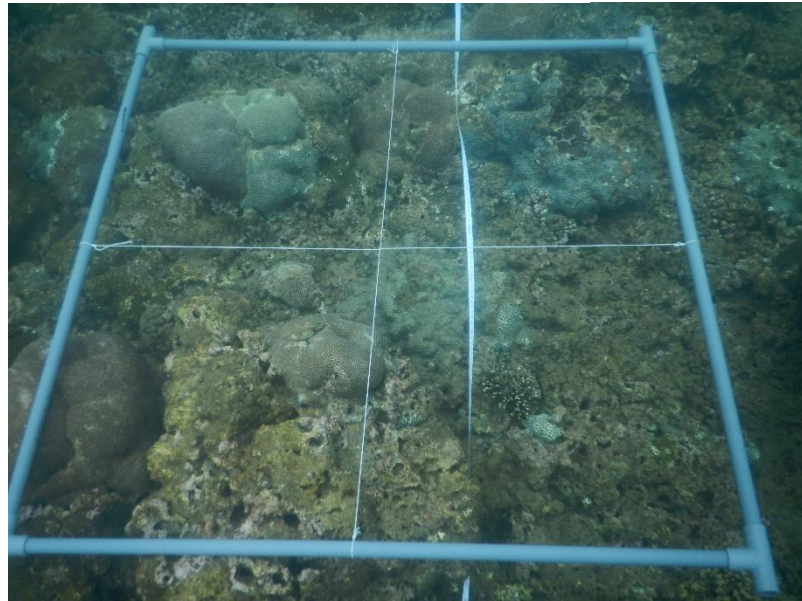
(a) pengambilan pH; (b) sedimen trap; (c) pengambilan DO; (d) humidity

Lampiran 2. Dokumentasi Lapang

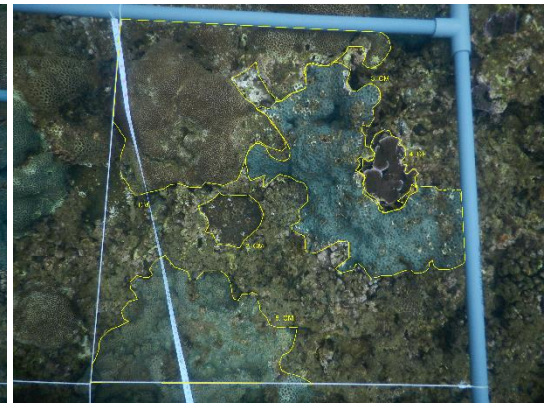


(a) Lokasi Stasiun 1; (b) Lokasi Stasiun 2; (c) Lokasi Stasiun 3; (d) Pengambilan Data Karang

Lampiran 3. Data Karang pada Transek



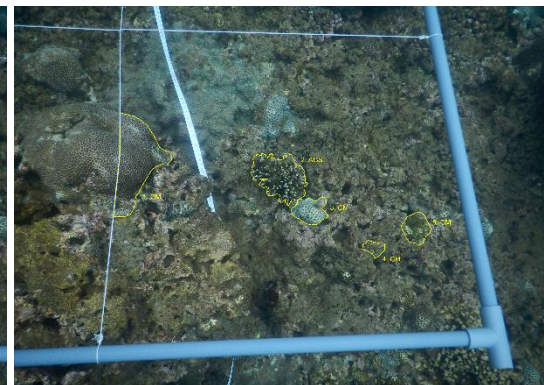
Hasil Foto Sub-transek 1



Hasil Foto Sub-transek 2



Hasil Foto Sub-transek 3



Hasil Foto Sub-transek 4

Lampiran 4. Contoh Penyakit dan Gangguan Kesehatan Karang



Lampiran 5. Data Hasil *ImageJ*

No.	Station	Name Picture	Quarat No.	Sub Quadrat	Coral Number	Family	Genus	Lifeform	Area	W	H	1	2	3	4
1	PS	DSCN8469-11	1	1	1	Faviidae	Coelastrea	CM	7221.522	98.126	73.594	CH-SD	1	CH-CY	1
2	PS	DSCN8472-12	1	2	1	Faviidae	Coelastrea	CM	228.738	22.163	14.312	GA-EGA	1		
3	PS	DSCN8476-13	1	3	1	Faviidae	Coelastrea	CM	23.428	5.841	6.019				
4	PS	DSCN8476-13	1	3	2	Faviidae	Coelastrea	CM	42.777	9.83	6.34				
5	PS	DSCN8476-13	1	3	3	Faviidae	Coelastrea	CM	14.598	5.734	4.185				
6	PS	DSCN8476-13	1	3	4	Poritidae	Porites	CF	50.368	7.284	9.759				
7	PS	DSCN8477-14	1	4	1	Faviidae	Coelastrea	CM	15.142	6.783	3.932				
8	PS	DSCN8477-14	1	4	2	Faviidae	Coelastrea	CM	24.2	5.524	6.645				
9	PS	DSCN8477-14	1	4	3	Faviidae	Coelastrea	CM	434.071	27.937	22.904	GA-EGA	1	TD-BL	1
10	PS	DSCN8477-14	1	4	4	Faviidae	Favia	CM	47.707	10.204	6.095				
11	PS	DSCN8477-14	1	4	5	Acroporidae	Acropora	ACD	22.352	5.033	5.682				
12	PS	DSCN8483-21	2	1	1	Faviidae	Coelastrea	CM	740.245	35.681	30.092	CH-SD	1		
13	PS	DSCN8483-21	2	1	2	Faviidae	Coelastrea	CM	640.622	29.871	33.858	CH-SD	1	GA-EGA	1
14	PS	DSCN8483-21	2	1	3	Faviidae	Coelastrea	CM	87.882	11.92	10.097	TD-BL	1		
15	PS	DSCN8483-21	2	1	4	Faviidae	Favia	CM	39.833	7.353	8.775				
16	PS	DSCN8483-21	2	1	5	Faviidae	Coelastrea	CM	126.273	8.735	21.597				

17	PS	DSCN8484-22	2	2	1	Faviidae	Coelastrea	CM	645.839	42.425	26.811	GA-EGA	1	CH-SD	1
18	PS	DSCN8484-22	2	2	2	Faviidae	Coelastrea	CM	55.91	9.893	8.45				
19	PS	DSCN8484-22	2	2	3	Faviidae	Coelastrea	CM	513.716	33.483	32.919	CH-SD	1		
20	PS	DSCN8484-22	2	2	4	Acroporidae	Montipora	CF	65.326	9.207	12.692				
21	PS	DSCN8484-22	2	2	5	Faviidae	Coelastrea	CM	410.817	33.817	19.575	CH-SD	1		
22	PS	DSCN8486-23	2	3	1	Faviidae	Coelastrea	CM	86.247	9.608	17.763				
23	PS	DSCN8486-23	2	3	2	Poritidae	Porites	ACS	53.64	9.268	8.948	CH-SD	1		
24	PS	DSCN8486-23	2	3	3	Faviidae	Coelastrea	CM	19.718	6.022	4.757	TD-BL	1		
25	PS	DSCN8486-23	2	3	4	Faviidae	Coelastrea	CM	18.513	4.908	5.72				
26	PS	DSCN8486-23	2	3	5	Faviidae	Coelastrea	CM	6.66	3.681	3.077				
27	PS	DSCN8487-24	2	4	1	Faviidae	Coelastrea	CM	557.001	24.532	30.226				
28	PS	DSCN8487-24	2	4	2	Faviidae	Coelastrea	CM	220.867	24.046	15.944	CH-SD	1		
29	PS	DSCN8487-24	2	4	3	Faviidae	Coelastrea	CM	232.243	18.595	17.605	TD-BL	1		
30	PS	DSCN8487-24	2	4	4	Faviidae	Coelastrea	CM	58.684	11.538	7.897	GA-EGA	1	TD-BL	1
31	PS	DSCN8487-24	2	4	5	Faviidae	Coelastrea	CM	100.409	13.61	13.759				
32	PS	DSCN8487-24	2	4	6	Faviidae	Coelastrea	CM	158.546	24.961	9.652				
33	PS	DSCN8491-31	3	1	1	Faviidae	Coelastrea	CM	498.053	32.588	22.205	CH-SD	1		
34	PS	DSCN8491-31	3	1	2	Faviidae	Favites	CM	99.993	12.906	12.5				
35	PS	DSCN8491-31	3	1	3	Faviidae	Coelastrea	CM	27.014	7.029	5.962	CH-SD	1		
36	PS	DSCN8493-32	3	2	1	Faviidae	Coelastrea	CM	949.606	44.293	38.964	CH-SD	1	TD-PR	1
37	PS	DSCN8493-32	3	2	2	Poritidae	Porites	CF	17.781	7.369	4.12				
38	PS	DSCN8496-33	3	3	1	Faviidae	Coelastrea	CM	249.075	15.997	23.272	CH-SD	1	GA-EGA	1
39	PS	DSCN8496-33	3	3	2	Faviidae	Coelastrea	CM	315.046	35.593	16.193	CH-SD	1		

40	PS	DSCN8496-33	3	3	3	Acroporidae	Montipora	CB	186.498	15.41	19.322					
41	PS	DSCN8496-33	3	3	4	Acroporidae	Montipora	CB	13.964	4.342	6.199					
42	PS	DSCN8496-33	3	3	5	Faviidae	Favites	CM	22.621	7.529	4.909	CH-SD	1			
43	PS	DSCN8498-34	3	4	1	Faviidae	Coelastrea	CM	113.756	14.427	15.11	CH-SD	1			
44	PS	DSCN8498-34	3	4	2	Faviidae	Favites	CM	281.337	22.656	19.87	CH-SD	1			
45	PS	DSCN8498-34	3	4	3	Faviidae	Coelastrea	CM	662.879	37.599	24.537	CH-SD	1	GA-EGA		1
46	PS	DSCN8498-34	3	4	4	Faviidae	Coelastrea	CM	35.764	7.878	7.527	CH-SD	1			
47	PS	DSCN8498-34	3	4	5	Acroporidae	Montipora	CB	92.627	9.188	16.549					
48	PS	DSCN8502-41	4	1	1	Faviidae	Coelastrea	CM	58.092	10.065	7.66					
49	PS	DSCN8502-41	4	1	2	Faviidae	Oulophyllia	CM	66.885	9.686	9.981					
50	PS	DSCN8502-41	4	1	3	Faviidae	Coelastrea	CM	150.354	16.058	16.143					
51	PS	DSCN8502-41	4	1	4	Acroporidae	Montipora	CB	22.957	6.71	5.296					
52	PS	DSCN8503-42	4	2	1	Acroporidae	Montipora	CB	5.01	3.06	2.444					
53	PS	DSCN8503-42	4	2	2	Faviidae	Coelastrea	CM	14.896	5.505	3.779					
54	PS	DSCN8503-42	4	2	3	Faviidae	Coelastrea	CM	11.518	4.704	5.525	CH-SD	1			
55	PS	DSCN8503-42	4	2	4	Faviidae	Coelastrea	CM	22.414	5.114	6.901	CH-SD	1			
56	PS	DSCN8503-42	4	2	5	Faviidae	Coelastrea	CM	17.658	5.525	5.587	CH-SD	1			
57	PS	DSCN8503-42	4	2	6	Faviidae	Coelastrea	CM	32.932	4.724	9.428					
58	PS	DSCN8504-43	4	3	1	Faviidae	Coelastrea	CM	277.421	18.145	20.907					
59	PS	DSCN8504-43	4	3	2	Acroporidae	Montipora	CB	105.947	16.799	11.59					
60	PS	DSCN8504-43	4	3	3	Acroporidae	Montipora	CB	75.587	9.317	10.856					
61	PS	DSCN8504-43	4	3	4	Faviidae	Coelastrea	CM	58.281	13.408	6.94	CH-SD	1			
62	PS	DSCN8504-43	4	3	5	Poritidae	Porites	CE	18.814	5.507	4.982	CH-SD	1			
63	PS	DSCN8504-43	4	3	6	Faviidae	Coelastrea	CM	19.555	4.667	6.206	CH-SD	1			