

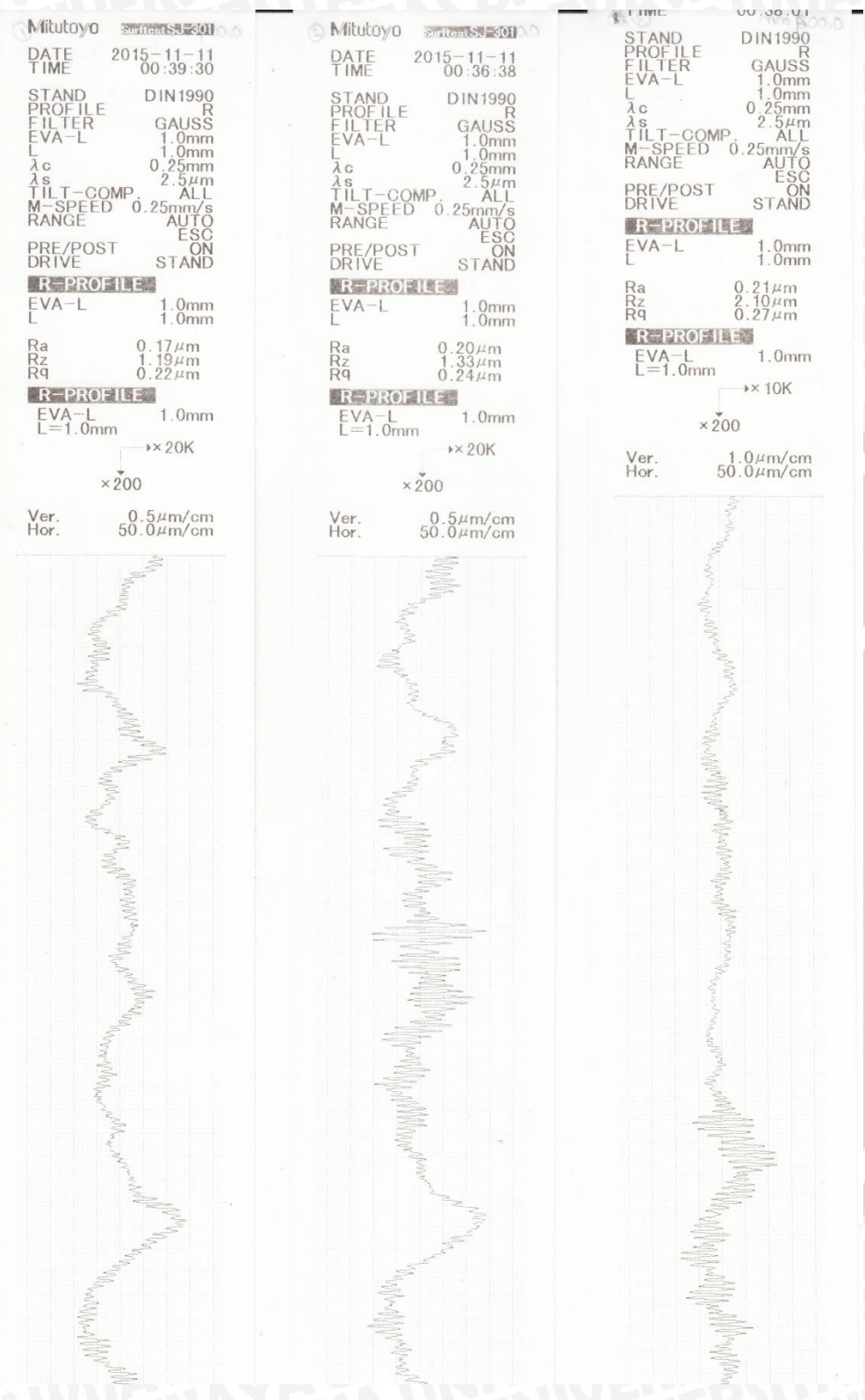
## LAMPIRAN

### Lampiran 1: Data Kekasaran Permukaan

- depth of cut 0,002 mm



- depth of cut 0,004 mm



- depth of cut 0,006 mm

Mitutoyo Surtest SJ-301

DATE 2015-11-11  
TIME 00:55:51

STAND DIN1990  
PROFILE R  
FILTER GAUSS  
EVA-L 1.0mm  
L 1.0mm  
 $\lambda_c$  0.25mm  
 $\lambda_s$  2.5 $\mu$ m  
TILT-COMP. ALL  
M-SPEED 0.25mm/s  
RANGE AUTO  
ESC  
PRE/POST ON  
DRIVE STAND

**R-PROFILE**

EVA-L 1.0mm  
L 1.0mm

Ra 0.24 $\mu$ m  
Rz 2.52 $\mu$ m  
Rq 0.31 $\mu$ m

**R-PROFILE**

EVA-L 1.0mm  
L=1.0mm

$\times 10K$

$\times 200$

Ver. 1.0 $\mu$ m/cm  
Hor. 50.0 $\mu$ m/cm



Mitutoyo Surtest SJ-301

DATE 2015-11-11  
TIME 00:53:37

STAND DIN1990  
PROFILE R  
FILTER GAUSS  
EVA-L 1.0mm  
L 1.0mm  
 $\lambda_c$  0.25mm  
 $\lambda_s$  2.5 $\mu$ m  
TILT-COMP. ALL  
M-SPEED 0.25mm/s  
RANGE AUTO  
ESC  
PRE/POST ON  
DRIVE STAND

**R-PROFILE**

EVA-L 1.0mm  
L 1.0mm

Ra 0.21 $\mu$ m  
Rz 1.97 $\mu$ m  
Rq 0.26 $\mu$ m

**R-PROFILE**

EVA-L 1.0mm  
L=1.0mm

$\times 10K$

$\times 200$

Ver. 1.0 $\mu$ m/cm  
Hor. 50.0 $\mu$ m/cm



Mitutoyo Surtest SJ-301

DATE 2015-11-11  
TIME 00:57:48

STAND DIN1990  
PROFILE R  
FILTER GAUSS  
EVA-L 1.0mm  
L 1.0mm  
 $\lambda_c$  0.25mm  
 $\lambda_s$  2.5 $\mu$ m  
TILT-COMP. ALL  
M-SPEED 0.25mm/s  
RANGE AUTO  
ESC  
PRE/POST ON  
DRIVE STAND

**R-PROFILE**

EVA-L 1.0mm  
L 1.0mm

Ra 0.23 $\mu$ m  
Rz 2.05 $\mu$ m  
Rq 0.29 $\mu$ m

**R-PROFILE**

EVA-L 1.0mm  
L=1.0mm

$\times 10K$

$\times 200$

Ver. 1.0 $\mu$ m/cm  
Hor. 50.0 $\mu$ m/cm



- depth of cut 0,008 mm

DATE 2015-11-11  
TIME 00:59:09

STAND DIN1990  
PROFILE R  
FILTER GAUSS  
EVA-L 1.0mm  
L 1.0mm  
 $\lambda_c$  0.25mm  
 $\lambda_s$  2.5 $\mu$ m  
TILT-COMP ALL  
M-SPEED 0.25mm/s  
RANGE AUTO  
PRE/POST ON  
DRIVE STAND

**R-PROFILE**

EVA-L 1.0mm  
L 1.0mm

Ra 0.24 $\mu$ m  
Rz 1.84 $\mu$ m  
Rq 0.30 $\mu$ m

**R-PROFILE**

EVA-L 1.0mm  
L=1.0mm

→ ×10K  
×200

Ver. 1.0 $\mu$ m/cm  
Hor. 50.0 $\mu$ m/cm



Mitutoyo Surtest SJ-301

DATE 2015-11-11  
TIME 01:00:55

STAND DIN1990  
PROFILE R  
FILTER GAUSS  
EVA-L 1.0mm  
L 1.0mm  
 $\lambda_c$  0.25mm  
 $\lambda_s$  2.5 $\mu$ m  
TILT-COMP ALL  
M-SPEED 0.25mm/s  
RANGE AUTO  
PRE/POST ON  
DRIVE STAND

**R-PROFILE**

EVA-L 1.0mm  
L 1.0mm

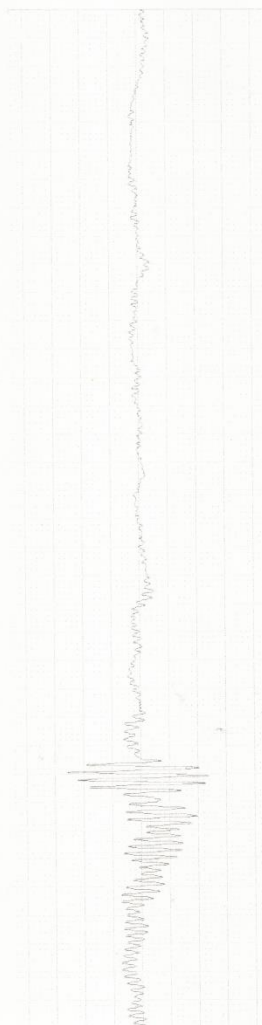
Ra 0.24 $\mu$ m  
Rz 4.96 $\mu$ m  
Rq 0.39 $\mu$ m

**R-PROFILE**

EVA-L 1.0mm  
L=1.0mm

→ ×5K  
×200

Ver. 2.0 $\mu$ m/cm  
Hor. 50.0 $\mu$ m/cm



Mitutoyo Surtest SJ-301

DATE 2015-11-11  
TIME 01:11:45

STAND DIN1990  
PROFILE R  
FILTER GAUSS  
EVA-L 1.0mm  
L 1.0mm  
 $\lambda_c$  0.25mm  
 $\lambda_s$  2.5 $\mu$ m  
TILT-COMP ALL  
M-SPEED 0.25mm/s  
RANGE AUTO  
PRE/POST ON  
DRIVE STAND

**R-PROFILE**

EVA-L 1.0mm  
L 1.0mm

Ra 0.25 $\mu$ m  
Rz 1.62 $\mu$ m  
Rq 0.31 $\mu$ m

**R-PROFILE**

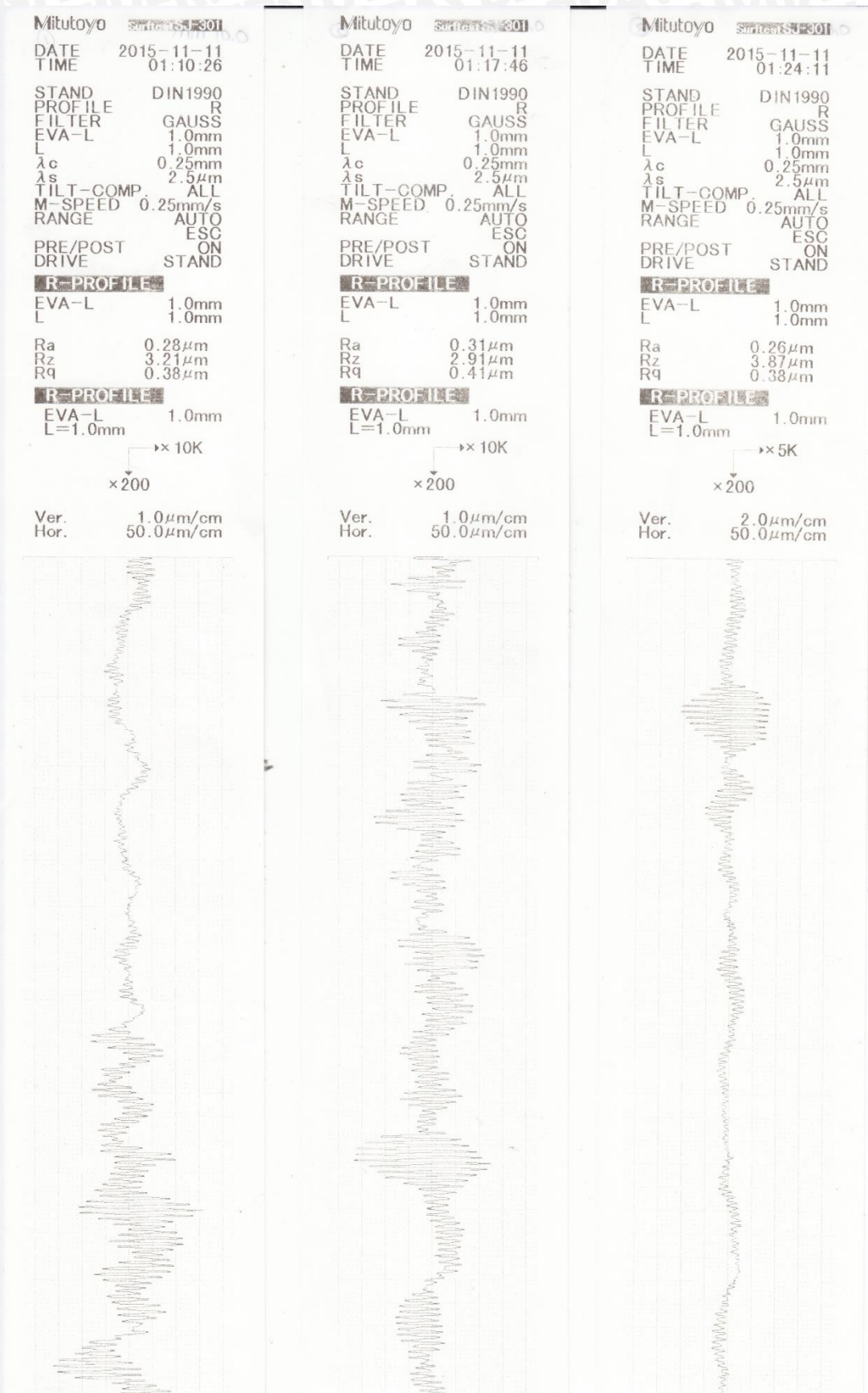
EVA-L 1.0mm  
L=1.0mm

→ ×20K  
×200

Ver. 0.5 $\mu$ m/cm  
Hor. 50.0 $\mu$ m/cm



- depth of cut 0,01 mm



Lampiran 2: Data Microanalysis Logam ST 37

Microanalysis Report



Logam ST 37

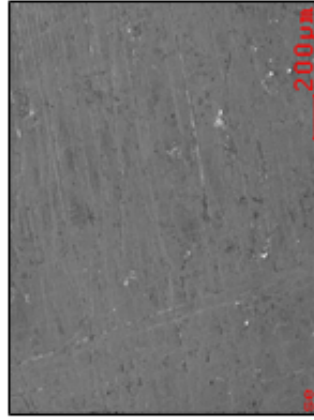
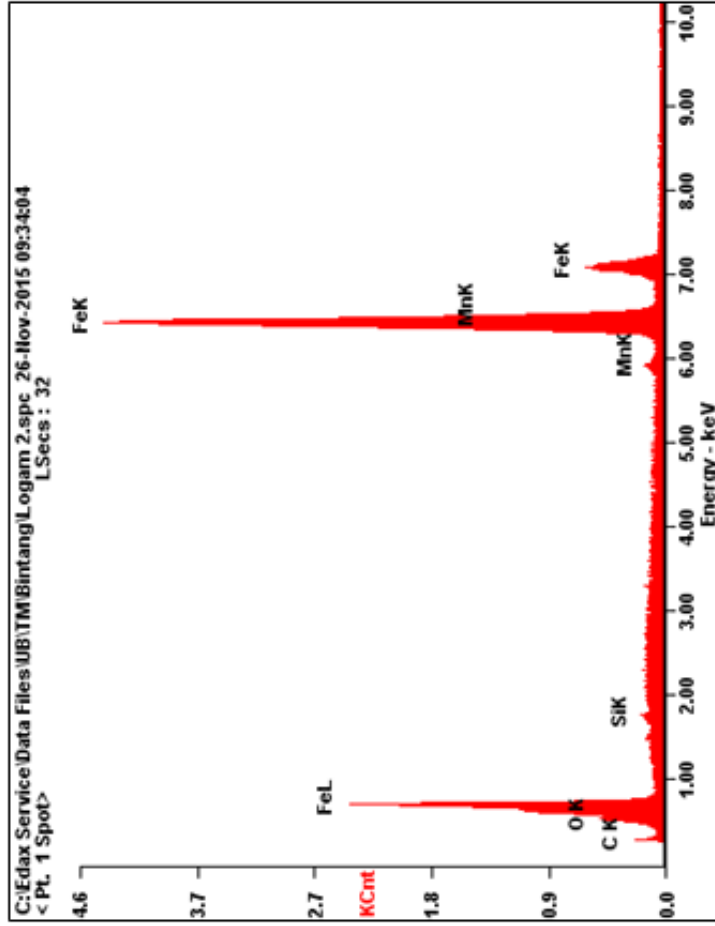
Prepared for: Mahasiswa Teknik Mesin UB

Prepared by: Laboratorium Sentral FMIPA UM

AMETEK

11/26/2015

C:\Edax Service\Data Files\UB\TM\Bintang\Logam 2.spc 26-Nov-2015 09:34:04  
LSecs : 32  
<Pl. 1 Spot>



Element	Wt%	At%
CK	04.88	17.52
OK	04.51	12.15
SiK	00.45	00.69
MnK	01.38	01.08
FeK	88.79	68.56
Matrix	Correction	ZAF