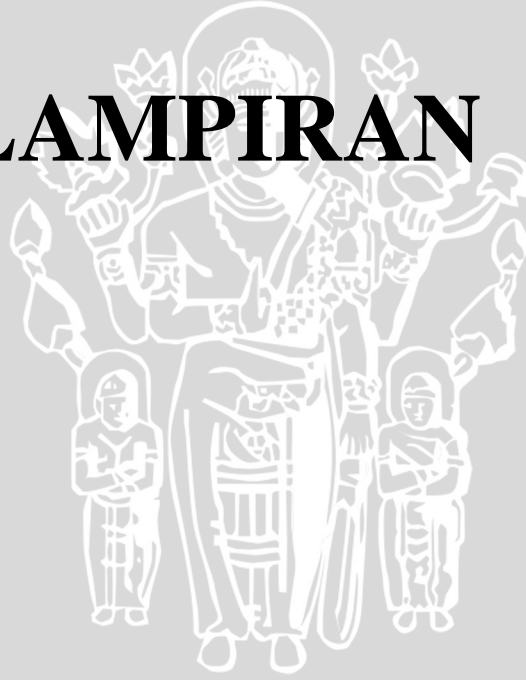


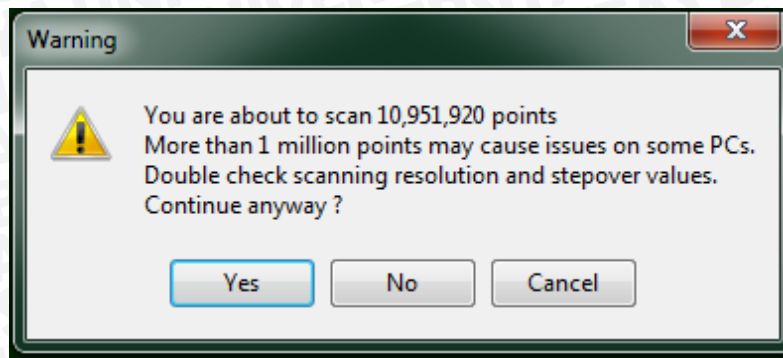
UNIVERSITAS BRAWIJAYA

LAMPIRAN

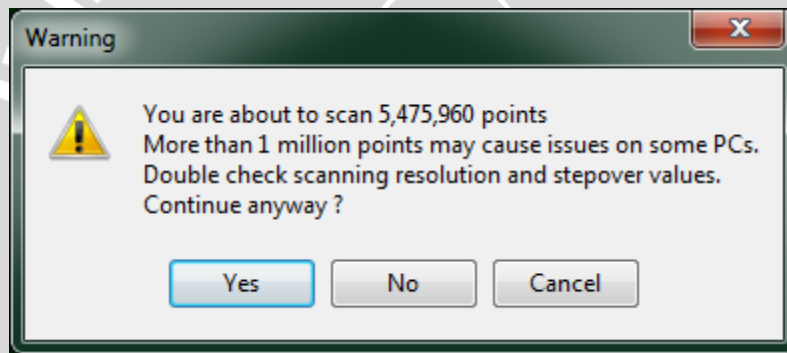


LAMPIRAN

Jumlah *point cloud* hasil *scanning*



Step Over Scanning 0,5 °



Step Over Scanning 1 °

Note : Pada *Step Over Scanning 5 °* tidak keluar peringatan jumlah *point cloud* dikarenakan *point cloud* yang terbentuk tidak terlalu banyak atau tidak melebihi 1 juta poin.

LAMPIRAN

Jumlah *g-code* mesin CNC

```
SF1000,SO0,5deg.fnc
```

(QuickCAM 4D ROTARY output
(SF1000SO5.fnc
(DATE = "4/20/2016"
(Z Datum is top of Billet
G21
(BILLET Diameter 35.000 Length 71.302
IToolDEF T1 D2.000

L: 1
of 24992

```
SF1000,SO1deg.fnc
```

(QuickCAM 4D ROTARY output
(SF1000,SO1,SA0.1height13.14.fnc
(DATE = "4/19/2016"
(Z Datum is top of Billet
G21
(BILLET Diameter 35.000 Length 71.302
IToolDEF T1 D2.000

L: 1
of 24623

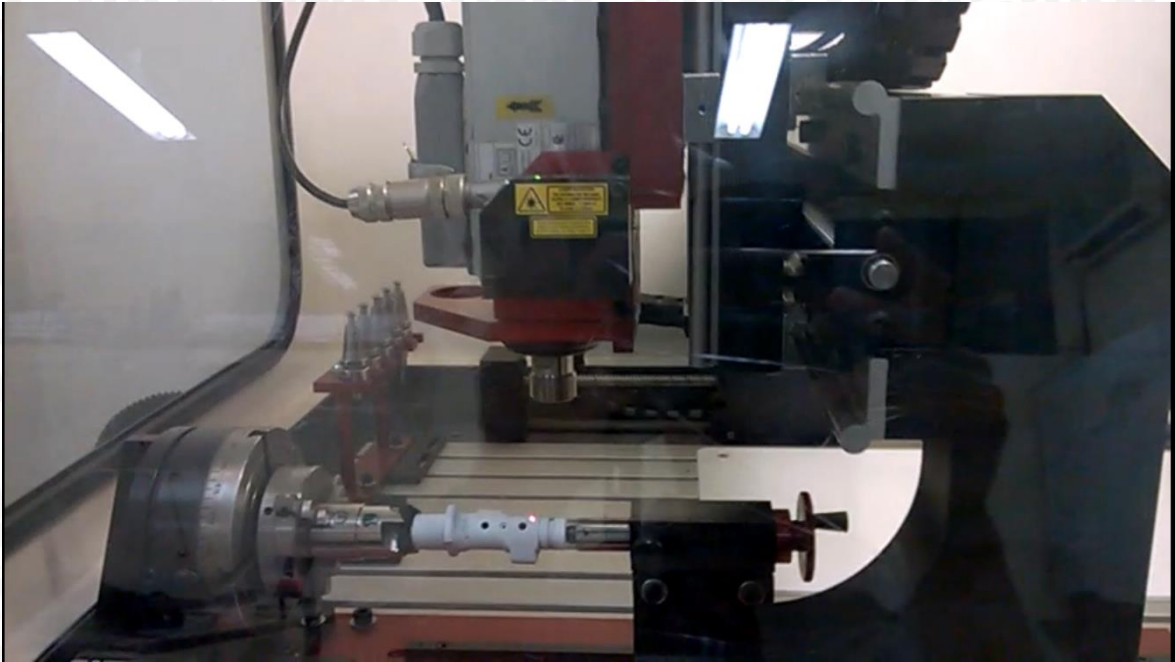
```
SF1000,SO5deg.fnc
```

(QuickCAM 4D ROTARY output
(SF1000,SO0.5,SA0.1height13.14.fnc
(DATE = "3/23/2016"
(Z Datum is top of Billet
G21
(BILLET Diameter 35.000 Length 71.302
IToolDEF T1 D2.000

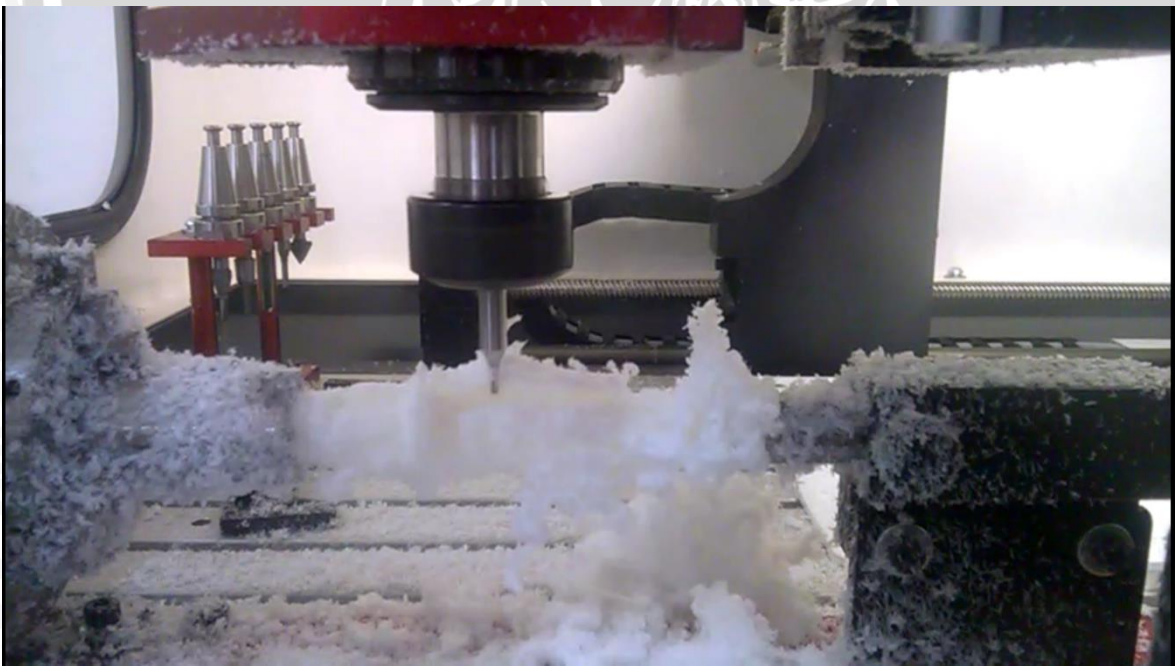
L: 1
of 24588

LAMPIRAN

Dokumentasi proses *scanning* dan pemesinan



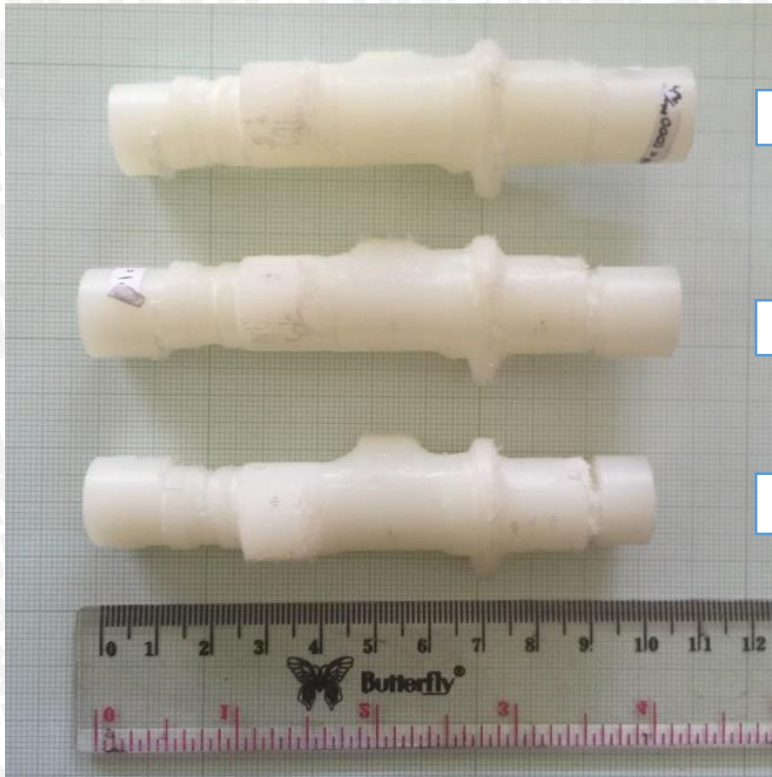
Gambar 1. Proses *scanning* camshaft



Gambar 2. Proses pemesinan camshaft

LAMPIRAN

Produk *camshaft* hasil *reverse engineering*



Step Over Scanning 0,5°

Step Over Scanning 1°

Step Over Scanning 5°

