

Lampiran 1. Foto proses penelitian

Proses Pengadukan



Proses Pengecoran Squeeze

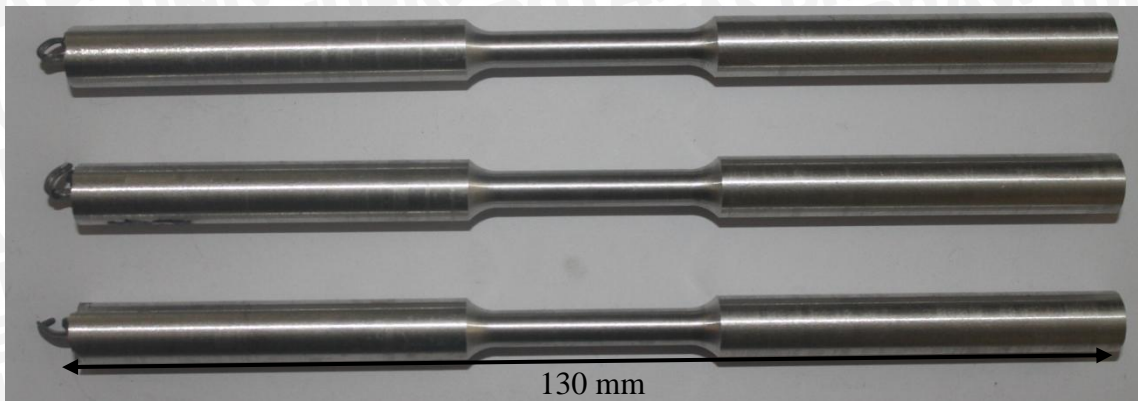


Pengujian Puntir

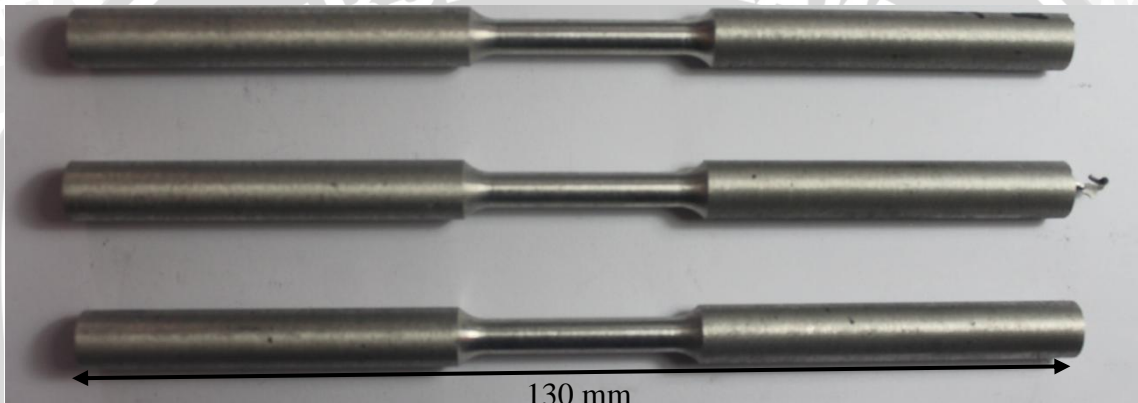


**Lampiran 2. Foto benda kerja**

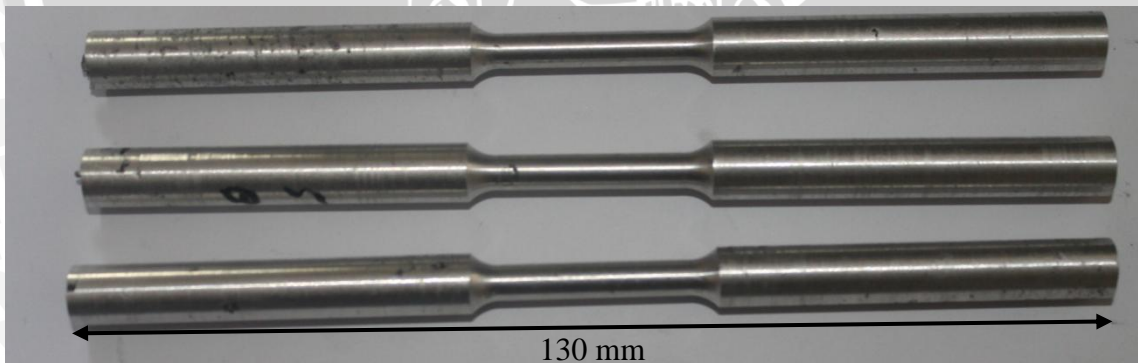
- Spesimen 100% A6061



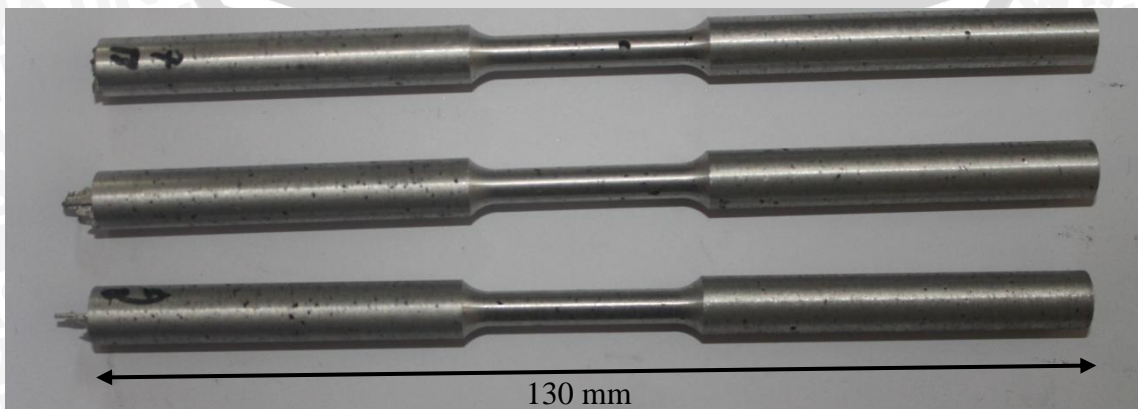
- Spesimen 95% A6061 5% *E-Glass*




- Spesimen 92,5% A6061 7,5% *E-Glass*



- Spesimen 90% A6061 10% *E-Glass*



Lampiran 3. Sertifikat Bahan dan Komposisi A6061


 **PT.H.P.METALS INDONESIA** **122804**

Method: Al-SS-6063 5/8/2014 11:03:28 AM  
 Comment: Al-Base SS-6063 Element Concentration  
 Sample No.: **3** Sample ID:

	Si	Fe	Cu	Mn	Mg	Cr	Zn	Ti
	%	%	%	%	%	%	%	%
1	0.538	0.341	0.218	0.0313	0.811	0.0679	0.0530	0.0145
2	0.541	0.335	0.218	0.0313	0.804	0.0679	0.0507	0.0144
3	0.530	0.322	0.213	0.0316	0.802	0.0679	0.0499	0.0144

	Na	Ca	Ni	Pb	P	Sn	Sb	Sr
	%	%	%	%	%	%	%	%
1	0.0064	0.00073	0.0069	0.0032	0.00052	0.00068	0.0018	0.00014
2	0.0071	0.00070	0.0068	0.0031	0.00055	0.00066	0.00075	< 0.00010
3	0.0050	0.00057	0.0067	0.0030	0.00060	0.00066	0.00088	< 0.00010

	Be	Zr	Bi	Cd	Al			
	%	%	%	%	%			
1	0.00006	0.0016	< 0.00030	0.0012	97.9			
2	0.00006	0.0015	< 0.00030	0.0012	97.9			
3	0.00006	0.0015	< 0.00030	0.0012	97.9			

 **PT.H.P.METALS INDONESIA** **122804**

Method: Al-SS-6063 5/8/2014 11:03:28 AM  
 Comment: Al-Base SS-6063 Element Concentration  
 Sample No.: **3** Sample ID:

	Si	Fe	Cu	Mn	Mg	Cr	Zn	Ti
	%	%	%	%	%	%	%	%
Ø (3)	0.536	0.333	0.216	0.0314	0.806	0.0679	0.0512	0.0145

	Na	Ca	Ni	Pb	P	Sn	Sb	Sr
	%	%	%	%	%	%	%	%
Ø (3)	0.0061	0.00066	0.0068	0.0031	0.00056	0.00067	0.0012	0.00011

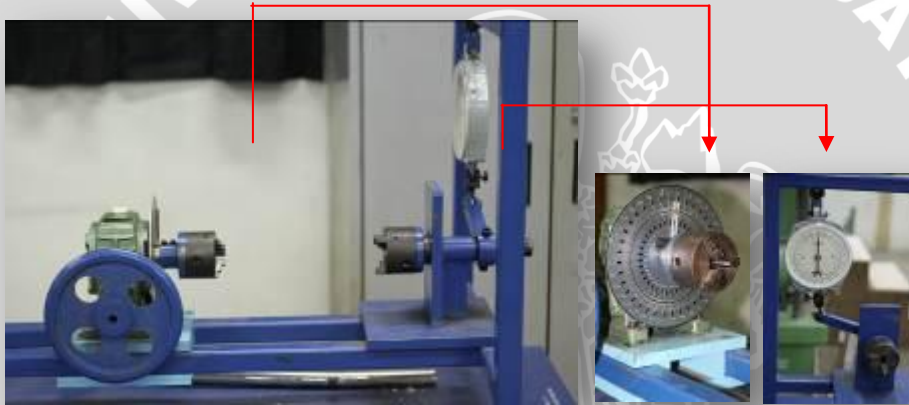
	Be	Zr	Bi	Cd	Al			
	%	%	%	%	%			
Ø (3)	0.00006	0.0015	< 0.00030	0.0012	97.9			



Lampiran 4. Foto alat yang digunakan



*Squeeze Casting*



*Alat Uji Puntir*



*Infrared Thermometer*



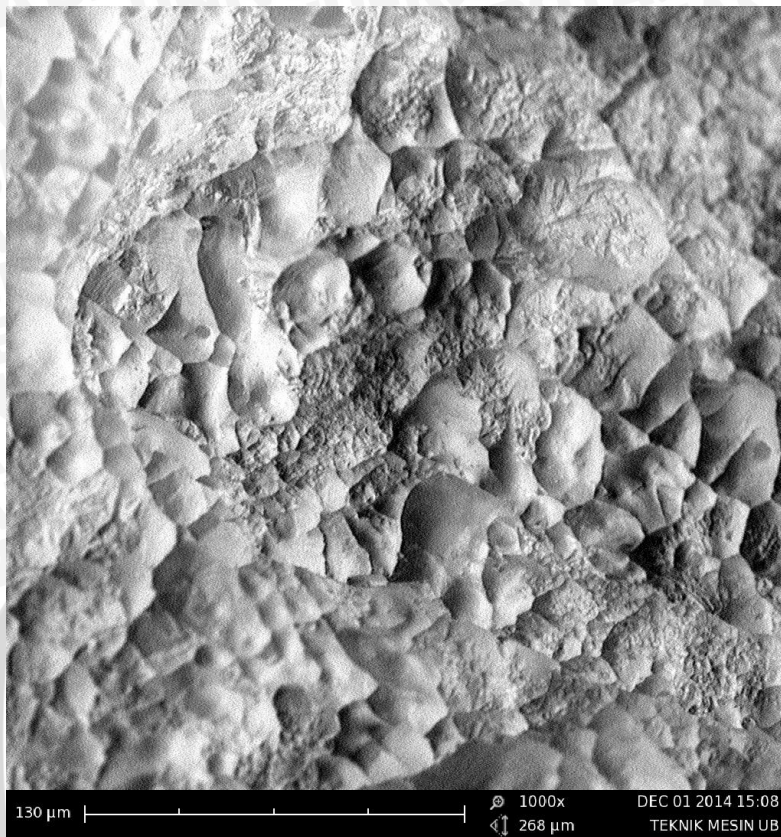
*Ladel*



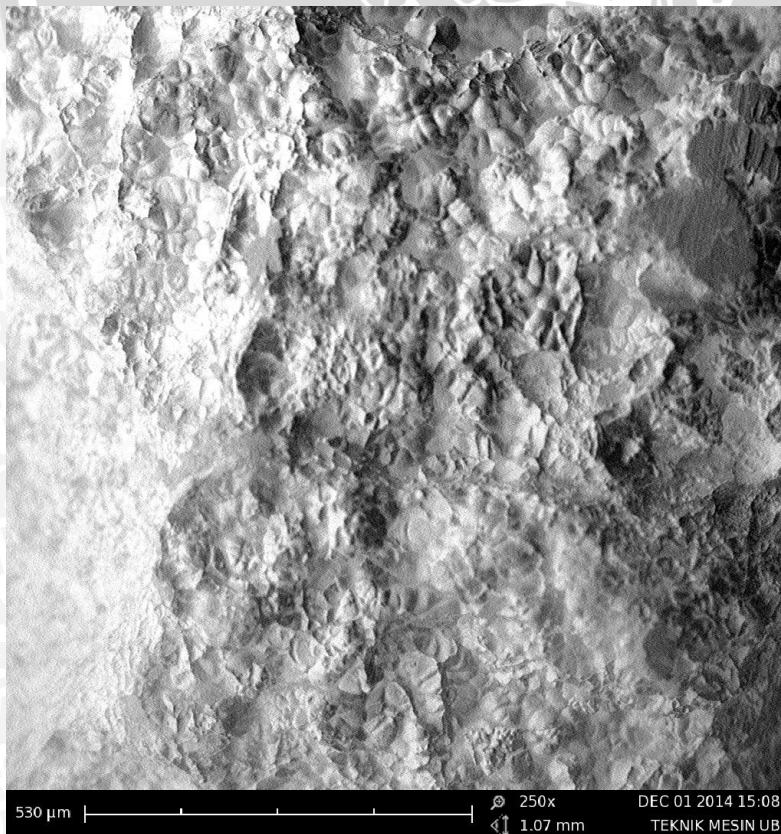
*Burner*

### Lampiran 5. Foto SEM benda kerja

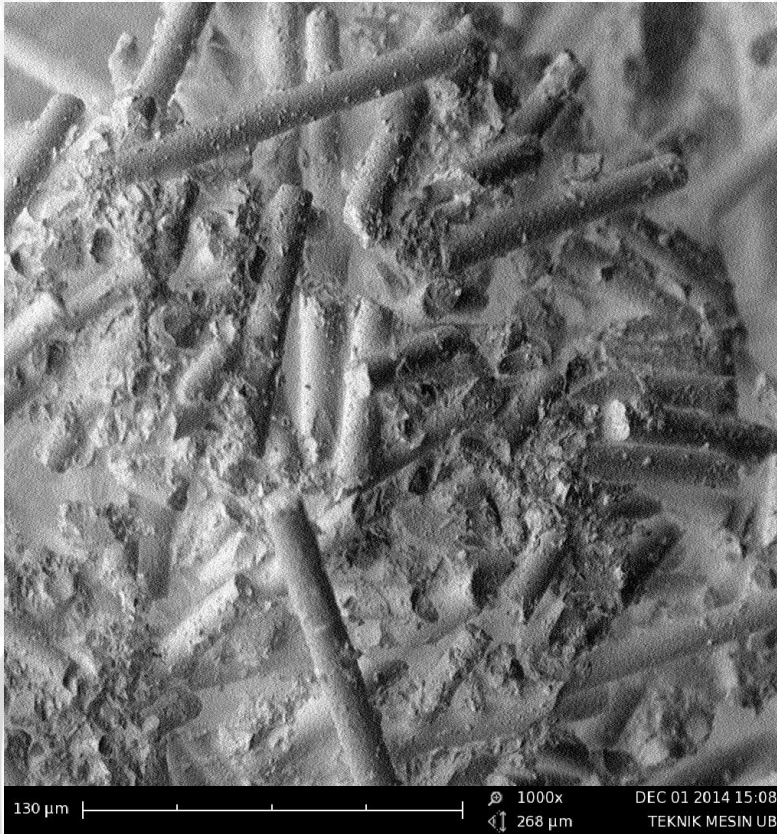
- Foto SEM spesimen 100% A6061 perbesaran 1000x



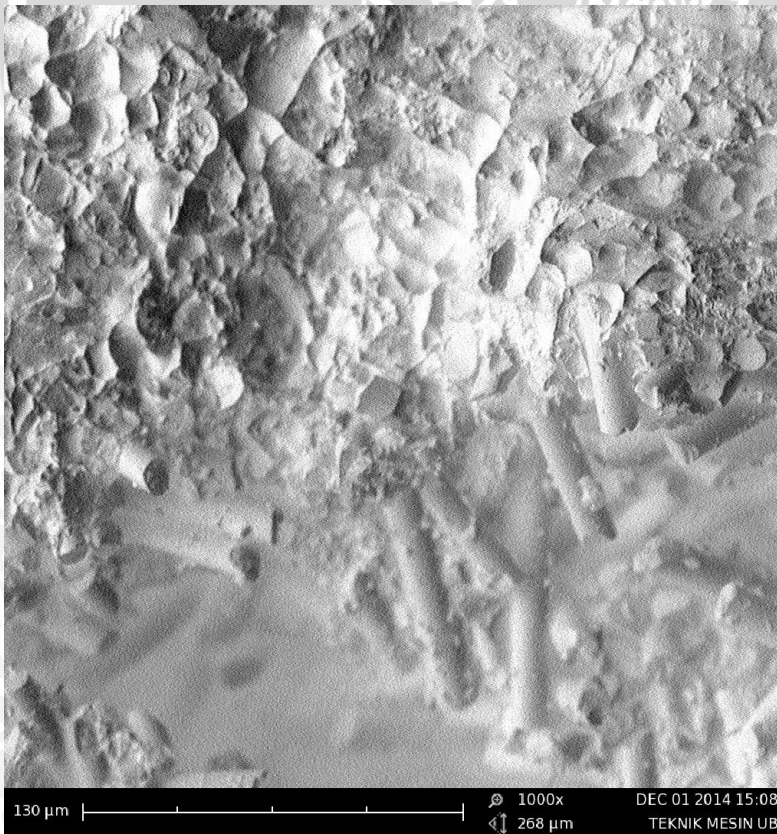
- Foto SEM spesimen 100% A6061 perbesaran 250x



- Foto SEM spesimen 90% A6061 10% *E-Glass* perbesaran 1000x



- Foto SEM spesimen 90% A6061 10% *E-Glass* perbesaran 1000x



- Foto SEM spesimen 90% A6061 10% E-Glass perbesaran 250x

