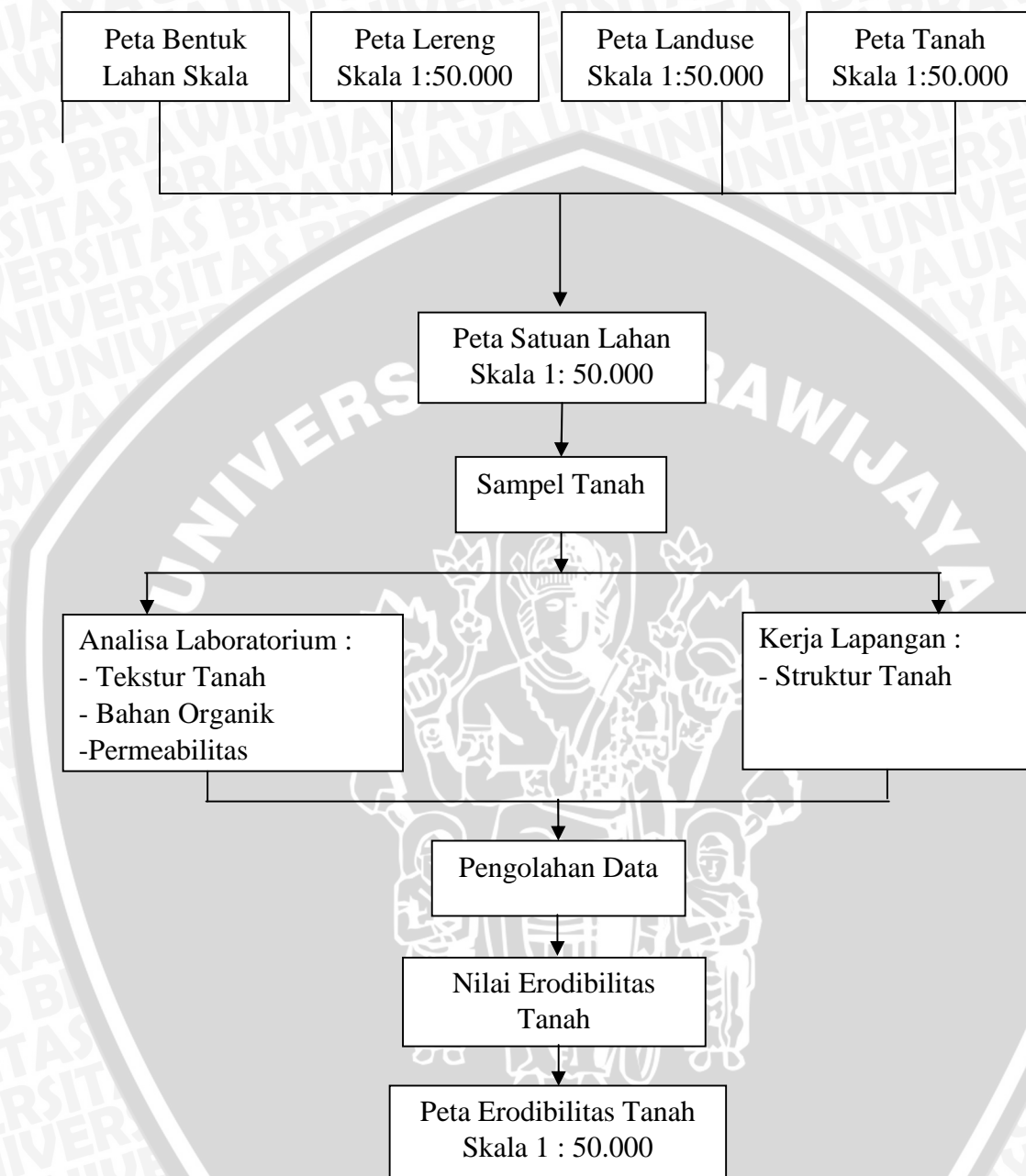


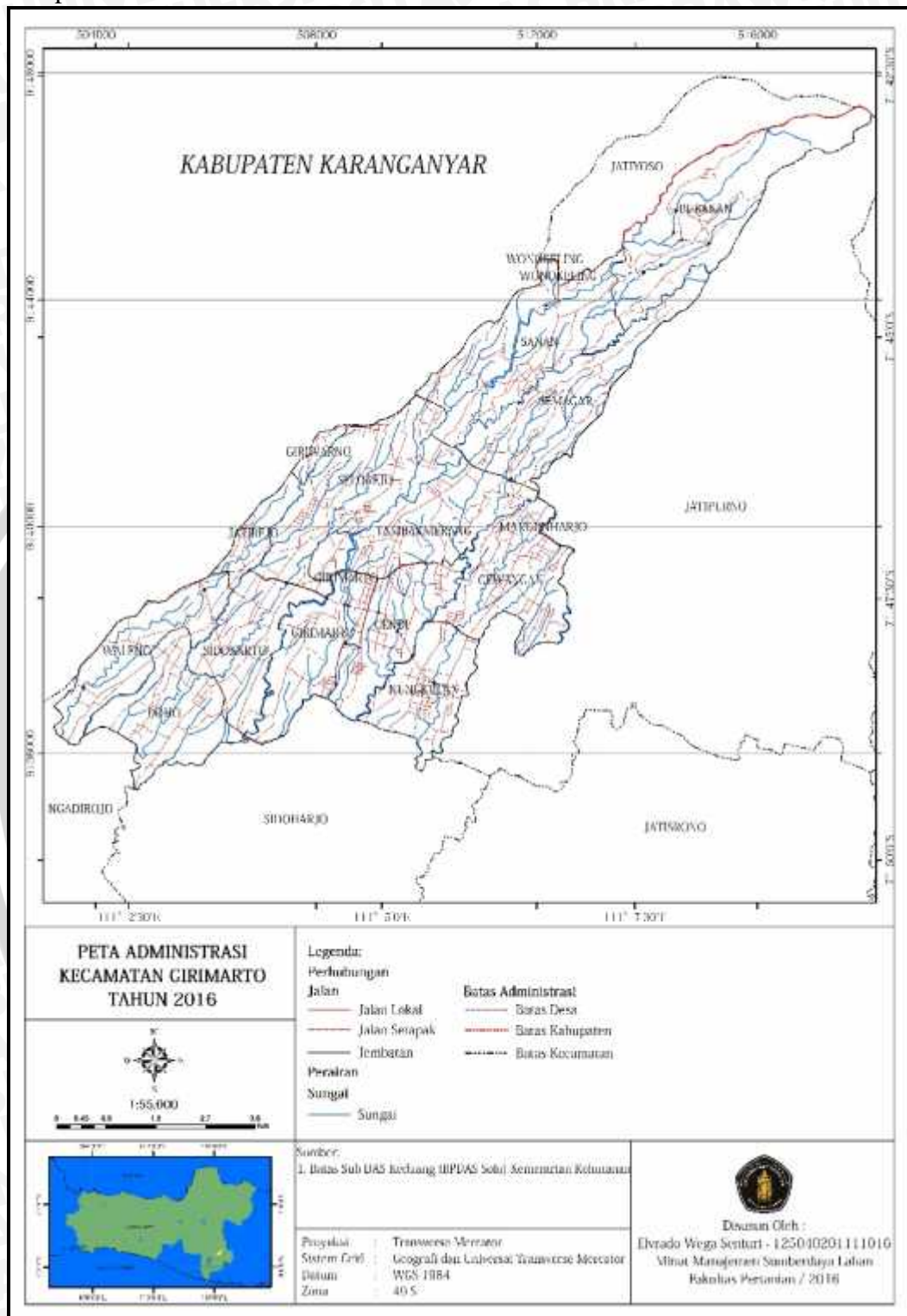
LAMPIRAN



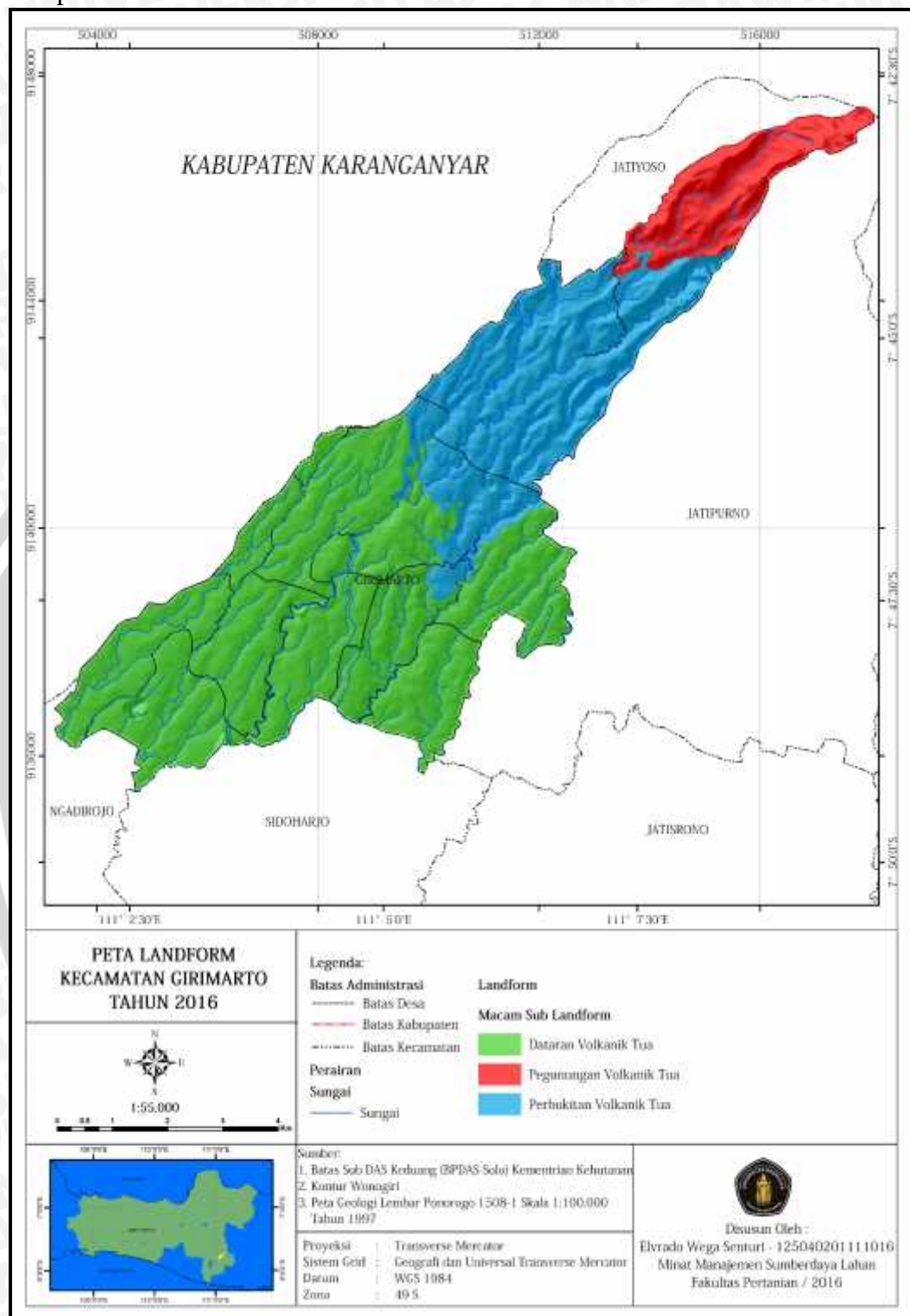
Lampiran 1. Diagram Alir Penelitian



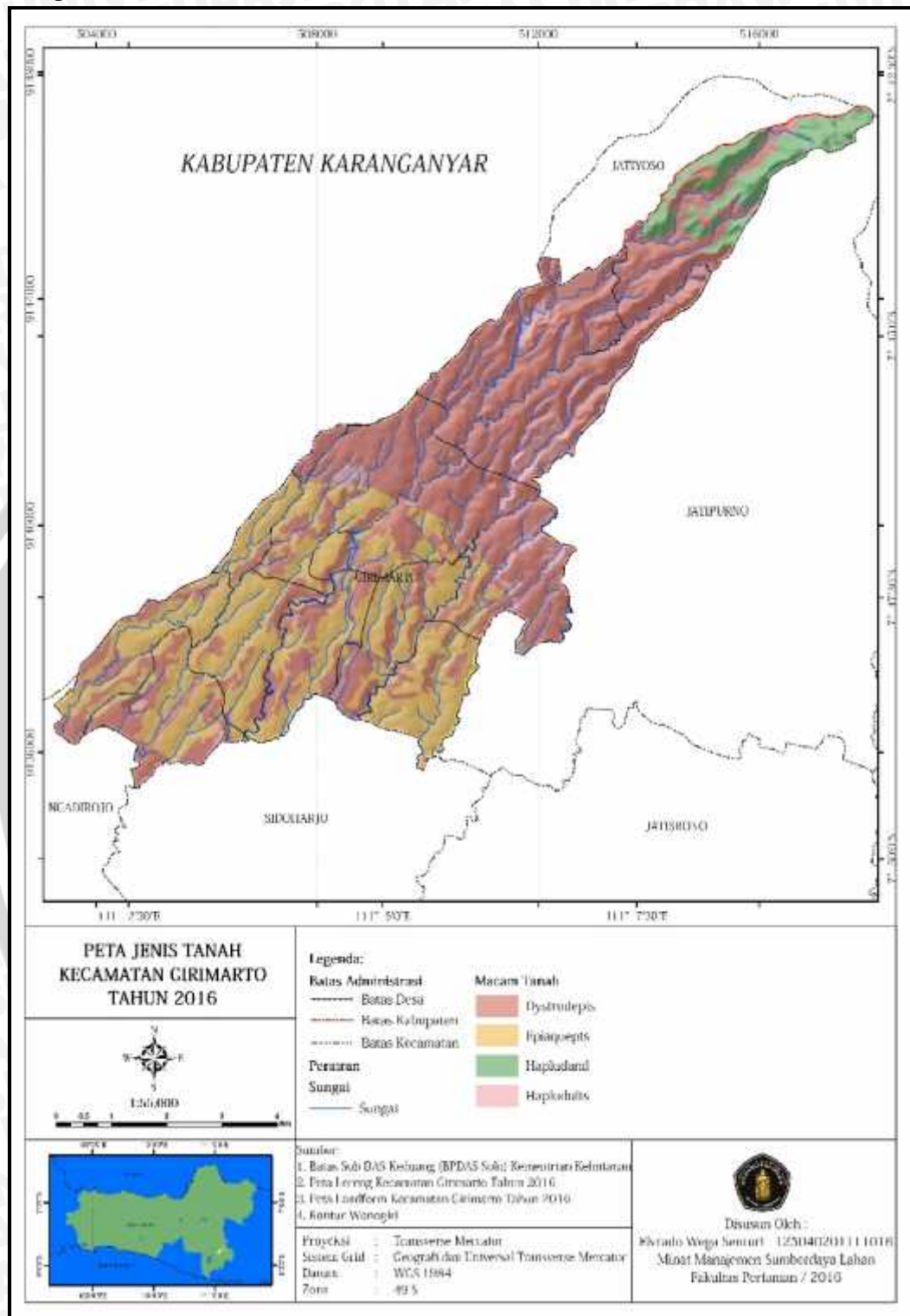
Lampiran 2. Peta Administrasi Kecamatan Girimarto



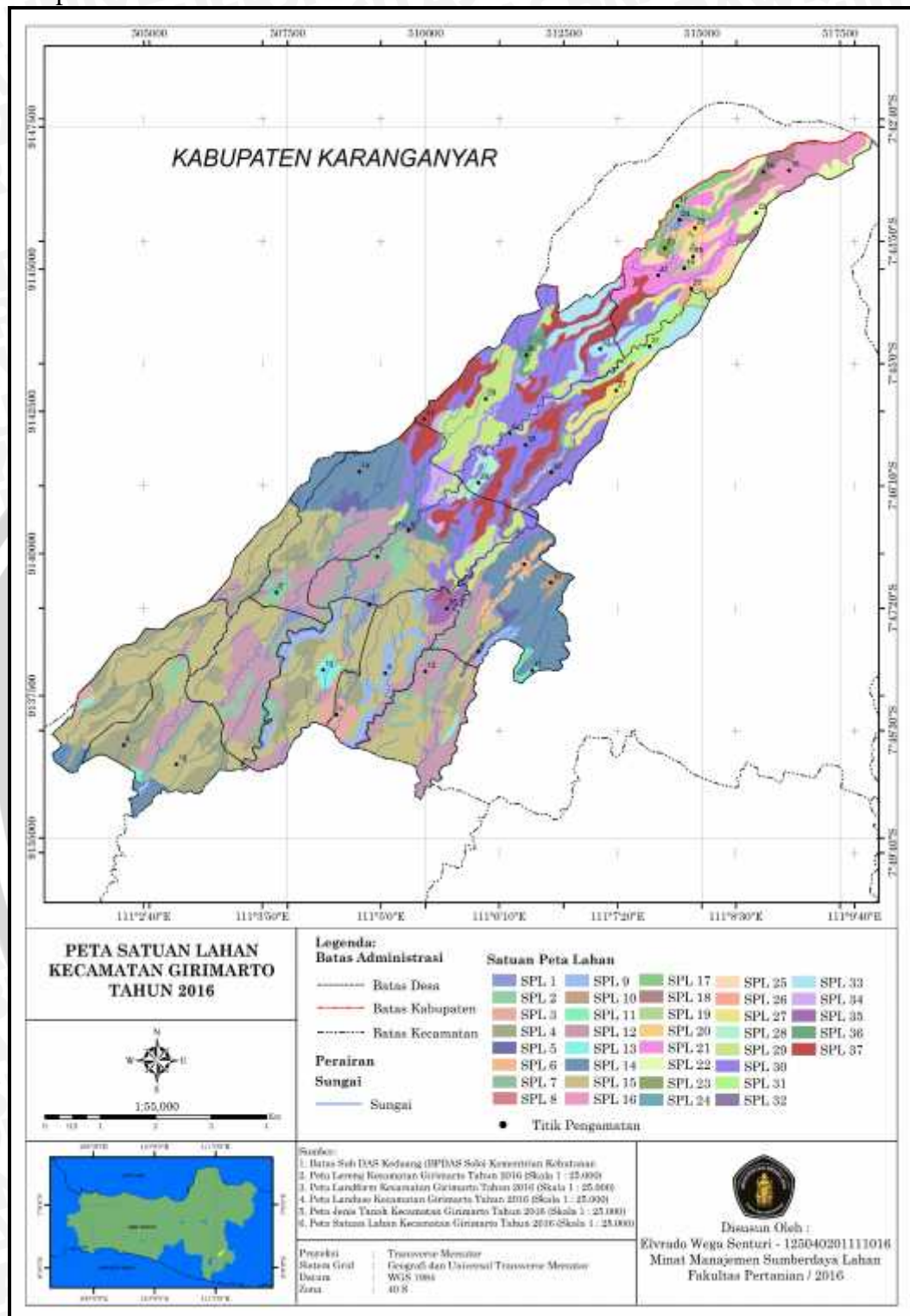
Lampiran 3. Peta Landform Kecamatan Girimarto



Lampiran 4. Peta Tanah Kecamatan Girimarto



Lampiran 5. Peta Satuan Lahan Kecamatan Girimarto



Lampiran 6. Dokumentasi Penelitian



Lampiran 7. Tabel Anova Regresi Persentase Debu dan Erodibilitas

| SK | db | JK | KT | Fhit | Ftab | Kesimpulan |
|---------|----|-------|-------|--------|------|------------|
| Regresi | 1 | 0.391 | 0.391 | 245.67 | 4.12 | Tolak H0 |
| Galat | 35 | 0.055 | 0.002 | | | |
| Total | 36 | 0.446 | | | | |

Lampiran 8. Tabel Anova Regresi Persentase Liat dan Erodibilitas

| SK | db | JK | KT | Fhit | Ftab | Kesimpulan |
|---------|----|-------|-------|--------|-------|------------|
| Regresi | 1 | 0.151 | 0.151 | 17.961 | 4.121 | Tolak H0 |
| Galat | 35 | 0.295 | 0.008 | | | |
| Total | 36 | 0.446 | | | | |

Lampiran 9. Tabel Anova Regresi Bahan Organik dan Erodibilitas

| SK | db | JK | KT | Fhit | Ftab | Kesimpulan |
|---------|----|-------|-------|-------|-------|------------|
| Regresi | 1 | 0.002 | 0.002 | 0.162 | 4.121 | Terima H0 |
| Galat | 35 | 0.444 | 0.013 | | | |
| Total | 36 | 0.446 | | | | |

Lampiran 10. Tabel Anova Regresi Persentase Pasir dan Erodibilitas

| SK | db | JK | KT | Fhit | Ftab | Kesimpulan |
|---------|----|-------|-------|-------|-------|------------|
| Regresi | 1 | 0.007 | 0.006 | 0.531 | 4.121 | Terima H0 |
| Galat | 35 | 0.440 | 0.012 | | | |
| Total | 36 | 0.446 | | | | |

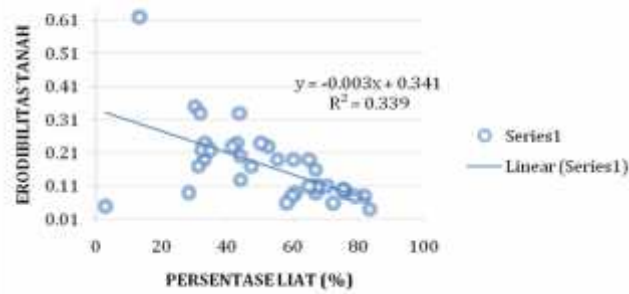
Lampiran 11. Tabel Anova Regresi Permeabilitas dan Erodibilitas

| SK | db | JK | KT | Fhit | Ftab | Kesimpulan |
|---------|----|-------|-------|-------|-------|------------|
| Regresi | 1 | 0.009 | 0.008 | 0.693 | 4.121 | Terima H0 |
| Galat | 35 | 0.438 | 0.012 | | | |
| Total | 36 | 0.446 | | | | |

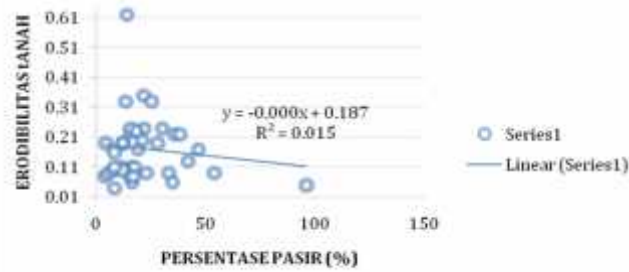
Lampiran 12. Grafik Hubungan antar Sifat Fisik Tanah dengan Erodibilitas



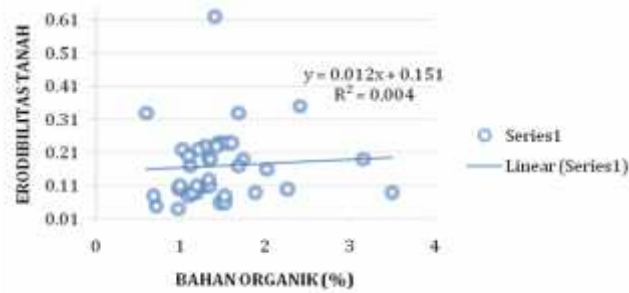
Regresi Persentase Liat terhadap Erodibilitas



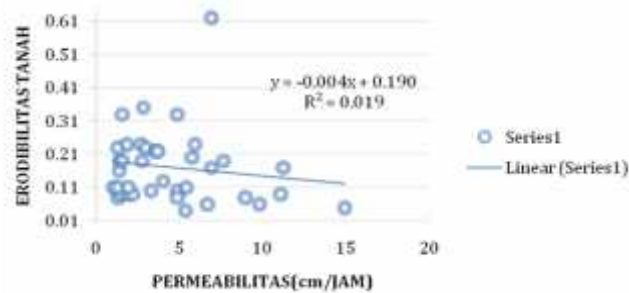
Regresi Persentase Pasir terhadap Erodibilitas



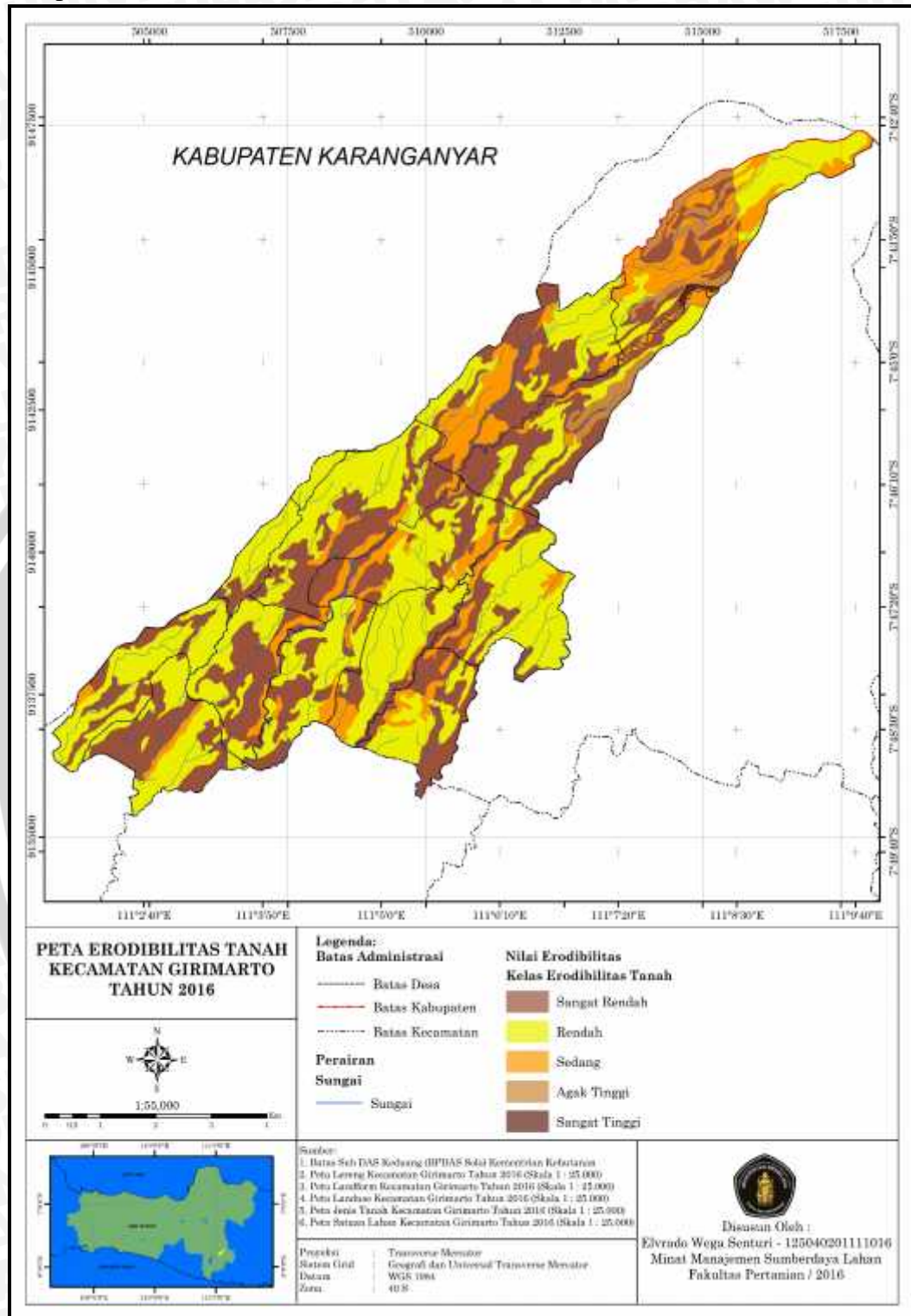
Regresi Bahan Organik terhadap Erodibilitas



Regresi Permeabilitas terhadap Erodibilitas



Lampiran 13. Peta Erodibilitas Kecamatan Girimarto



| Kecamatan | Landform | Sub Landform | Lereng (%) | Landuse | Jenis Tanah | SPL | Erodibilitas (K) | Kriteria |
|-----------|----------|----------------------|------------|----------------|-------------|--------|------------------|---------------|
| GIRIMARTO | Vulkanik | Dataran Vulkanik Tua | 0-8 % | Pemukiman | Dystrudepts | SPL 1 | 0.08 | Sangat Rendah |
| GIRIMARTO | Vulkanik | Dataran Vulkanik Tua | 0-8 % | Sawah | Dystrudepts | SPL 2 | 0.19 | Rendah |
| GIRIMARTO | Vulkanik | Dataran Vulkanik Tua | 0-8 % | Tegalan | Dystrudepts | SPL 3 | 0.23 | Sedang |
| GIRIMARTO | Vulkanik | Dataran Vulkanik Tua | 0-8 % | Kebun Campuran | Dystrudepts | SPL 4 | 0.04 | Sangat Rendah |
| GIRIMARTO | Vulkanik | Dataran Vulkanik Tua | 0-8 % | Kebun Campuran | Hapludults | SPL 5 | 0.09 | Sangat Rendah |
| GIRIMARTO | Vulkanik | Dataran Vulkanik Tua | 15-25 % | Pemukiman | Hapludults | SPL 6 | 0.16 | Rendah |
| GIRIMARTO | Vulkanik | Dataran Vulkanik Tua | 15-25 % | Sawah | Dystrudepts | SPL 7 | 0.24 | Sedang |
| GIRIMARTO | Vulkanik | Dataran Vulkanik Tua | 15-25 % | Sawah | Hapludults | SPL 8 | 0.19 | Rendah |
| GIRIMARTO | Vulkanik | Dataran Vulkanik Tua | 15-25 % | Kebun Campuran | Dystrudepts | SPL 9 | 0.19 | Rendah |
| GIRIMARTO | Vulkanik | Dataran Vulkanik Tua | 15-25 % | Kebun Campuran | Hapludults | SPL 10 | 0.24 | Sedang |
| GIRIMARTO | Vulkanik | Dataran Vulkanik Tua | 8-15 % | Sawah | Dystrudepts | SPL 11 | 0.10 | Sangat Rendah |
| GIRIMARTO | Vulkanik | Dataran Vulkanik Tua | 8-15 % | Sawah | Epiaquepts | SPL 12 | 0.09 | Sangat Rendah |
| GIRIMARTO | Vulkanik | Dataran Vulkanik Tua | 8-15 % | Tegalan | Epiaquepts | SPL 13 | 0.11 | Rendah |

| Kecamatan | Landform | Sub Landform | Lereng (%) | Landuse | Jenis Tanah | SPL | Erodibilitas (K) | Kriteria |
|-----------|----------|-------------------------|------------|----------------|-------------|--------|------------------|---------------|
| GIRIMARTO | Vulkanik | Dataran Vulkanik Tua | 8-15 % | Kebun Campuran | Dystrudepts | SPL 14 | 0.11 | Rendah |
| GIRIMARTO | Vulkanik | Dataran Vulkanik Tua | 8-15 % | Kebun Campuran | Epiaquepts | SPL 15 | 0.11 | Rendah |
| GIRIMARTO | Vulkanik | Pegunungan Vulkanik Tua | > 45 % | Hutan | Hapludand | SPL 16 | 0.17 | Rendah |
| GIRIMARTO | Vulkanik | Pegunungan Vulkanik Tua | > 45 % | Kebun Campuran | Hapludand | SPL 17 | 0.33 | Agak Tinggi |
| GIRIMARTO | Vulkanik | Pegunungan Vulkanik Tua | 15-25 % | Hutan | Dystrudepts | SPL 18 | 0.19 | Rendah |
| GIRIMARTO | Vulkanik | Pegunungan Vulkanik Tua | 15-25 % | Pemukiman | Dystrudepts | SPL 19 | 0.24 | Sedang |
| GIRIMARTO | Vulkanik | Pegunungan Vulkanik Tua | 15-25 % | Tegalan | Dystrudepts | SPL 20 | 0.35 | Agak Tinggi |
| GIRIMARTO | Vulkanik | Pegunungan Vulkanik Tua | 15-25 % | Kebun Campuran | Dystrudepts | SPL 21 | 0.23 | Sedang |
| GIRIMARTO | Vulkanik | Pegunungan Vulkanik Tua | 25-45 % | Kebun Campuran | Hapludand | SPL 22 | 0.22 | Sedang |
| GIRIMARTO | Vulkanik | Pegunungan Vulkanik Tua | 25-45 % | Sawah | Hapludand | SPL 23 | 0.09 | Sangat Rendah |
| GIRIMARTO | Vulkanik | Pegunungan Vulkanik Tua | 25-45 % | Kebun Campuran | Dystrudepts | SPL 24 | 0.05 | Sangat Rendah |
| GIRIMARTO | Vulkanik | Pegunungan Vulkanik Tua | 25-45 % | Kebun Campuran | Hapludand | SPL 25 | 0.06 | Sangat Rendah |
| GIRIMARTO | Vulkanik | Perbukitan Vulkanik Tua | > 45 % | Tegalan | Dystrudepts | SPL 26 | 0.62 | Sangat Tinggi |

| Kecamatan | Landform | Sub Landform | Lereng (%) | Landuse | Jenis Tanah | SPL | Erodibilitas (K) | Kriteria |
|-----------|----------|-------------------------|------------|----------------|-------------|--------|------------------|---------------|
| GIRIMARTO | Vulkanik | Perbukitan Vulkanik Tua | > 45 % | Kebun Campuran | Dystrudepts | SPL 27 | 0.33 | Agak Tinggi |
| GIRIMARTO | Vulkanik | Perbukitan Vulkanik Tua | 0-8 % | Kebun Campuran | Dystrudepts | SPL 28 | 0.08 | Sangat Rendah |
| GIRIMARTO | Vulkanik | Perbukitan Vulkanik Tua | 15-25 % | Sawah | Dystrudepts | SPL 29 | 0.22 | Sedang |
| GIRIMARTO | Vulkanik | Perbukitan Vulkanik Tua | 15-25 % | Kebun Campuran | Dystrudepts | SPL 30 | 0.10 | Sangat Rendah |
| GIRIMARTO | Vulkanik | Perbukitan Vulkanik Tua | 25-45 % | Sawah | Dystrudepts | SPL 31 | 0.06 | Sangat Rendah |
| GIRIMARTO | Vulkanik | Perbukitan Vulkanik Tua | 25-45 % | Sawah | Hapludults | SPL 32 | 0.17 | Rendah |
| GIRIMARTO | Vulkanik | Perbukitan Vulkanik Tua | 25-45 % | Kebun Campuran | Dystrudepts | SPL 33 | 0.20 | Rendah |
| GIRIMARTO | Vulkanik | Perbukitan Vulkanik Tua | 8-15 % | Sawah | Dystrudepts | SPL 34 | 0.08 | Sangat Rendah |
| GIRIMARTO | Vulkanik | Perbukitan Vulkanik Tua | 8-15 % | Sawah | Epiaquepts | SPL 35 | 0.13 | Rendah |
| GIRIMARTO | Vulkanik | Perbukitan Vulkanik Tua | 8-15 % | Sawah | Hapludults | SPL 36 | 0.09 | Sangat Rendah |
| GIRIMARTO | Vulkanik | Perbukitan Vulkanik Tua | 8-15 % | Tegalan | Dystrudepts | SPL 37 | 0.11 | Rendah |