

Lampiran 1 Data

Descriptives

KONSENTRASI EKSTRAK	DIAMETER ZONA HAMBATAN (mm)			
	1	2	3	4
65%	16	16	15	16
60%	14	14	13	13
55%	12	12	11	12
50%	10	10	10	10
45%	7	7	7	7
0%	5	5	5	5
Ketokonazol 2%	26	26	26	27

Diameter zona hambatan koloni fungi *Candida albicans*

	N	Mean	Std. Deviation	Std. Error	95% Confidence Interval for Mean		Minimum	Maximum
					Lower Bound	Upper Bound		
Ekstrak 65%	4	15,7500	,50000	,25000	14,9544	16,5456	15,00	16,00
Ekstrak 60%	4	13,5000	,57735	,28868	12,5813	14,4187	13,00	14,00
Ekstrak 55%	4	11,7500	,50000	,25000	10,9544	12,5456	11,00	12,00
Ekstrak 50%	4	10,0000	,00000	,00000	10,0000	10,0000	10,00	10,00
Ekstrak 45%	4	7,0000	,00000	,00000	7,0000	7,0000	7,00	7,00
Ekstrak 0%	4	5,0000	,00000	,00000	5,0000	5,0000	5,00	5,00
Ketokonazol 2%	4	26,2500	,50000	,25000	25,4544	27,0456	26,00	27,00
Total	28	12,7500	6,60317	1,24788	10,1896	15,3104	5,00	27,00



Lampiran 2. Pengujian Asumsi

Asumsi Normalitas

One-Sample Kolmogorov-Smirnov Test

		Diameter zona hambatan koloni fungi Candida albicans
N		28
Normal Parameters ^{a,b}	Mean	12,7500
	Std. Deviation	6,60317
Most Extreme Differences	Absolute	,168
	Positive	,168
	Negative	-,120
Test Statistic		,168
Asymp. Sig. (2-tailed)		,041 ^c

- a. Test distribution is Normal.
- b. Calculated from data.
- c. Lilliefors Significance Correction.

Asumsi Homogenitas

Test of Homogeneity of Variances

Diameter zona hambatan koloni fungi Candida albicans

Levene Statistic	df1	df2	Sig.
7,333	6	21	,000



Lampiran 3. (Kruskal Walis)

Ranks			
	Ekstrak minyak atsiri	N	Mean Rank
Diameter zona hambatan koloni fungi Candida albicans	Ekstrak 65%	4	22,50
	Ekstrak 60%	4	18,50
	Ekstrak 55%	4	14,50
	Ekstrak 50%	4	10,50
	Ekstrak 45%	4	6,50
	Ekstrak 0%	4	2,50
	Ketokonazol 2%	4	26,50
	Total	28	

Test Statistics ^{a,b}	
	Diameter zona hambatan koloni fungi Candida albicans
Chi-Square	26,806
df	6
Asymp. Sig.	,000

- a. Kruskal Wallis Test
- b. Grouping Variable: Ekstrak minyak atsiri



Lampiran 4. Uji Lanjutan (Mann Whitney)

Perbandingan antara Ekstrak Minyak Atsiri Daun Kemangi 65% dan 60%

Ranks				
	Ekstrak minyak atsiri	N	Mean Rank	Sum of Ranks
Diameter zona hambatan	Ekstrak 65%	4	6,50	26,00
koloni fungi Candida albicans	Ekstrak 60%	4	2,50	10,00
	Total	8		

Test Statistics ^a	
	Diameter zona hambatan koloni fungi Candida albicans
Mann-Whitney U	,000
Wilcoxon W	10,000
Z	-2,397
Asymp. Sig. (2-tailed)	,017
Exact Sig. [2*(1-tailed Sig.)]	,029 ^b

a. Grouping Variable: Ekstrak minyak atsiri

b. Not corrected for ties.

Perbandingan antara Ekstrak Minyak Atsiri Daun Kemangi 65% dan 55%

Ranks				
	Ekstrak minyak atsiri	N	Mean Rank	Sum of Ranks
Diameter zona hambatan	Ekstrak 65%	4	6,50	26,00
koloni fungi Candida albicans	Ekstrak 55%	4	2,50	10,00
	Total	8		

Test Statistics ^a	
	Diameter zona hambatan koloni fungi Candida albicans
Mann-Whitney U	,000
Wilcoxon W	10,000
Z	-2,428
Asymp. Sig. (2-tailed)	,015
Exact Sig. [2*(1-tailed Sig.)]	,029 ^b

a. Grouping Variable: Ekstrak minyak atsiri

b. Not corrected for ties.



Perbandingan antara Ekstrak Minyak Atsiri Daun Kemangi 65% dan 50%

Ranks				
	Ekstrak minyak atsiri	N	Mean Rank	Sum of Ranks
Diameter zona hambatan	Ekstrak 65%	4	6,50	26,00
koloni fungi Candida	Ekstrak 50%	4	2,50	10,00
albicans	Total	8		

Test Statistics ^a	
	Diameter zona hambatan koloni fungi Candida albicans
Mann-Whitney U	,000
Wilcoxon W	10,000
Z	-2,530
Asymp. Sig. (2-tailed)	,011
Exact Sig. [2*(1-tailed Sig.)]	,029 ^b

a. Grouping Variable: Ekstrak minyak atsiri

b. Not corrected for ties.

Perbandingan antara Ekstrak Minyak Atsiri Daun Kemangi 65% dan 45%

Ranks				
	Ekstrak minyak atsiri	N	Mean Rank	Sum of Ranks
Diameter zona hambatan	Ekstrak 65%	4	6,50	26,00
koloni fungi Candida	Ekstrak 45%	4	2,50	10,00
albicans	Total	8		

Test Statistics ^a	
	Diameter zona hambatan koloni fungi Candida albicans
Mann-Whitney U	,000
Wilcoxon W	10,000
Z	-2,530
Asymp. Sig. (2-tailed)	,011
Exact Sig. [2*(1-tailed Sig.)]	,029 ^b

a. Grouping Variable: Ekstrak minyak atsiri

b. Not corrected for ties.



Perbandingan antara Ekstrak Minyak Atsiri Daun Kemangi 65% dan 0%

Ranks				
	Ekstrak minyak atsiri	N	Mean Rank	Sum of Ranks
Diameter zona hambatan koloni fungi Candida albicans	Ekstrak 65%	4	6,50	26,00
	Ekstrak 0%	4	2,50	10,00
	Total	8		

Test Statistics ^a	
	Diameter zona hambatan koloni fungi Candida albicans
Mann-Whitney U	,000
Wilcoxon W	10,000
Z	-2,530
Asymp. Sig. (2-tailed)	,011
Exact Sig. [2*(1-tailed Sig.)]	,029 ^b

a. Grouping Variable: Ekstrak minyak atsiri

b. Not corrected for ties.

Perbandingan antara Ekstrak Minyak Atsiri Daun Kemangi 65% dan Ketokonazol 2%

Ranks				
	Ekstrak minyak atsiri	N	Mean Rank	Sum of Ranks
Diameter zona hambatan koloni fungi Candida albicans	Ekstrak 65%	4	2,50	10,00
	Ketokonazol 2%	4	6,50	26,00
	Total	8		

Test Statistics ^a	
	Diameter zona hambatan koloni fungi Candida albicans
Mann-Whitney U	,000
Wilcoxon W	10,000
Z	-2,428
Asymp. Sig. (2-tailed)	,015
Exact Sig. [2*(1-tailed Sig.)]	,029 ^b

a. Grouping Variable: Ekstrak minyak atsiri

b. Not corrected for ties.



Perbandingan antara Ekstrak Minyak Atsiri Daun Kemangi 60% dan 55%

Ranks				
	Ekstrak minyak atsiri	N	Mean Rank	Sum of Ranks
Diameter zona hambatan	Ekstrak 60%	4	6,50	26,00
koloni fungi Candida	Ekstrak 55%	4	2,50	10,00
albicans	Total	8		

Test Statistics ^a	
	Diameter zona hambatan koloni fungi Candida albicans
Mann-Whitney U	,000
Wilcoxon W	10,000
Z	-2,397
Asymp. Sig. (2-tailed)	,017
Exact Sig. [2*(1-tailed Sig.)]	,029 ^b

a. Grouping Variable: Ekstrak minyak atsiri

b. Not corrected for ties.

Perbandingan antara Ekstrak Minyak Atsiri Daun Kemangi 60% dan 50%

Ranks				
	Ekstrak minyak atsiri	N	Mean Rank	Sum of Ranks
Diameter zona hambatan	Ekstrak 60%	4	6,50	26,00
koloni fungi Candida	Ekstrak 50%	4	2,50	10,00
albicans	Total	8		

Test Statistics ^a	
	Diameter zona hambatan koloni fungi Candida albicans
Mann-Whitney U	,000
Wilcoxon W	10,000
Z	-2,494
Asymp. Sig. (2-tailed)	,013
Exact Sig. [2*(1-tailed Sig.)]	,029 ^b

a. Grouping Variable: Ekstrak minyak atsiri

b. Not corrected for ties.



Perbandingan antara Ekstrak Minyak Atsiri Daun Kemangi 60% dan 45%

Ranks				
	Ekstrak minyak atsiri	N	Mean Rank	Sum of Ranks
Diameter zona hambatan koloni fungi Candida albicans	Ekstrak 60%	4	6,50	26,00
	Ekstrak 45%	4	2,50	10,00
	Total	8		

Test Statistics ^a	
	Diameter zona hambatan koloni fungi Candida albicans
Mann-Whitney U	,000
Wilcoxon W	10,000
Z	-2,494
Asymp. Sig. (2-tailed)	,013
Exact Sig. [2*(1-tailed Sig.)]	,029 ^b

a. Grouping Variable: Ekstrak minyak atsiri

b. Not corrected for ties.

Perbandingan antara Ekstrak Minyak Atsiri Daun Kemangi 60% dan 0%

Ranks				
	Ekstrak minyak atsiri	N	Mean Rank	Sum of Ranks
Diameter zona hambatan koloni fungi Candida albicans	Ekstrak 60%	4	6,50	26,00
	Ekstrak 0%	4	2,50	10,00
	Total	8		

Test Statistics ^a	
	Diameter zona hambatan koloni fungi Candida albicans
Mann-Whitney U	,000
Wilcoxon W	10,000
Z	-2,494
Asymp. Sig. (2-tailed)	,013
Exact Sig. [2*(1-tailed Sig.)]	,029 ^b

a. Grouping Variable: Ekstrak minyak atsiri

b. Not corrected for ties.



Perbandingan antara Ekstrak Minyak Atsiri Daun Kemangi 60% dan Ketokonazol 2%

Ranks

	Ekstrak minyak atsiri	N	Mean Rank	Sum of Ranks
Diameter zona hambatan koloni fungi Candida albicans	Ekstrak 60%	4	2,50	10,00
	Ketokonazol 2%	4	6,50	26,00
	Total	8		

Test Statistics^a

	Diameter zona hambatan koloni fungi Candida albicans
Mann-Whitney U	,000
Wilcoxon W	10,000
Z	-2,397
Asymp. Sig. (2-tailed)	,017
Exact Sig. [2*(1-tailed Sig.)]	,029 ^b

a. Grouping Variable: Ekstrak minyak atsiri

b. Not corrected for ties.

Perbandingan antara Ekstrak Minyak Atsiri Daun Kemangi 55% dan 50%

Ranks

	Ekstrak minyak atsiri	N	Mean Rank	Sum of Ranks
Diameter zona hambatan koloni fungi Candida albicans	Ekstrak 55%	4	6,50	26,00
	Ekstrak 50%	4	2,50	10,00
	Total	8		

Test Statistics^a

	Diameter zona hambatan koloni fungi Candida albicans
Mann-Whitney U	,000
Wilcoxon W	10,000
Z	-2,530
Asymp. Sig. (2-tailed)	,011
Exact Sig. [2*(1-tailed Sig.)]	,029 ^b

a. Grouping Variable: Ekstrak minyak atsiri

b. Not corrected for ties.

Perbandingan antara Ekstrak Minyak Atsiri Daun Kemangi 55% dan 45%

Ranks				
	Ekstrak minyak atsiri	N	Mean Rank	Sum of Ranks
Diameter zona hambatan	Ekstrak 55%	4	6,50	26,00
koloni fungi Candida	Ekstrak 45%	4	2,50	10,00
albicans	Total	8		

Test Statistics ^a	
	Diameter zona hambatan koloni fungi Candida albicans
Mann-Whitney U	,000
Wilcoxon W	10,000
Z	-2,530
Asymp. Sig. (2-tailed)	,011
Exact Sig. [2*(1-tailed Sig.)]	,029 ^b

a. Grouping Variable: Ekstrak minyak atsiri

b. Not corrected for ties.

Perbandingan antara Ekstrak Minyak Atsiri Daun Kemangi 55% dan 0%

Ranks				
	Ekstrak minyak atsiri	N	Mean Rank	Sum of Ranks
Diameter zona hambatan	Ekstrak 55%	4	6,50	26,00
koloni fungi Candida	Ekstrak 0%	4	2,50	10,00
albicans	Total	8		

Test Statistics ^a	
	Diameter zona hambatan koloni fungi Candida albicans
Mann-Whitney U	,000
Wilcoxon W	10,000
Z	-2,530
Asymp. Sig. (2-tailed)	,011
Exact Sig. [2*(1-tailed Sig.)]	,029 ^b

a. Grouping Variable: Ekstrak minyak atsiri

b. Not corrected for ties.



Perbandingan antara Ekstrak Minyak Atsiri Daun Kemangi 55% dan Ketokonazol 2%

Ranks				
	Ekstrak minyak atsiri	N	Mean Rank	Sum of Ranks
Diameter zona hambatan	Ekstrak 55%	4	2,50	10,00
koloni fungi Candida albicans	Ketokonazol 2%	4	6,50	26,00
	Total	8		

Test Statistics ^a	
	Diameter zona hambatan koloni fungi Candida albicans
Mann-Whitney U	,000
Wilcoxon W	10,000
Z	-2,428
Asymp. Sig. (2-tailed)	,015
Exact Sig. [2*(1-tailed Sig.)]	,029 ^b

a. Grouping Variable: Ekstrak minyak atsiri

b. Not corrected for ties.

Perbandingan antara Ekstrak Minyak Atsiri Daun Kemangi 50% dan 45%

Ranks				
	Ekstrak minyak atsiri	N	Mean Rank	Sum of Ranks
Diameter zona hambatan	Ekstrak 50%	4	6,50	26,00
koloni fungi Candida albicans	Ekstrak 45%	4	2,50	10,00
	Total	8		

Test Statistics ^a	
	Diameter zona hambatan koloni fungi Candida albicans
Mann-Whitney U	,000
Wilcoxon W	10,000
Z	-2,646
Asymp. Sig. (2-tailed)	,008
Exact Sig. [2*(1-tailed Sig.)]	,029 ^b

a. Grouping Variable: Ekstrak minyak atsiri

b. Not corrected for ties.

Perbandingan antara Ekstrak Minyak Atsiri Daun Kemangi 50% dan 0%

Ranks				
	Ekstrak minyak atsiri	N	Mean Rank	Sum of Ranks
Diameter zona hambatan	Ekstrak 50%	4	6,50	26,00
koloni fungi <i>Candida albicans</i>	Ekstrak 0%	4	2,50	10,00
	Total	8		

Test Statistics ^a	
	Diameter zona hambatan koloni fungi <i>Candida albicans</i>
Mann-Whitney U	,000
Wilcoxon W	10,000
Z	-2,646
Asymp. Sig. (2-tailed)	,008
Exact Sig. [2*(1-tailed Sig.)]	,029 ^b

a. Grouping Variable: Ekstrak minyak atsiri

b. Not corrected for ties.

Perbandingan antara Ekstrak Minyak Atsiri Daun Kemangi 50% dan Ketokonazol 2%

Ranks				
	Ekstrak minyak atsiri	N	Mean Rank	Sum of Ranks
Diameter zona hambatan	Ekstrak 50%	4	2,50	10,00
koloni fungi <i>Candida albicans</i>	Ketokonazol 2%	4	6,50	26,00
	Total	8		

Test Statistics ^a	
	Diameter zona hambatan koloni fungi <i>Candida albicans</i>
Mann-Whitney U	,000
Wilcoxon W	10,000
Z	-2,530
Asymp. Sig. (2-tailed)	,011
Exact Sig. [2*(1-tailed Sig.)]	,029 ^b

a. Grouping Variable: Ekstrak minyak atsiri

b. Not corrected for ties.

Perbandingan antara Ekstrak Minyak Atsiri Daun Kemangi 45% dan 0%

Ranks				
	Ekstrak minyak atsiri	N	Mean Rank	Sum of Ranks
Diameter zona hambatan	Ekstrak 45%	4	6,50	26,00
koloni fungi <i>Candida albicans</i>	Ekstrak 0%	4	2,50	10,00
	Total	8		

Test Statistics ^a	
	Diameter zona hambatan koloni fungi <i>Candida albicans</i>
Mann-Whitney U	,000
Wilcoxon W	10,000
Z	-2,646
Asymp. Sig. (2-tailed)	,008
Exact Sig. [2*(1-tailed Sig.)]	,029 ^b

a. Grouping Variable: Ekstrak minyak atsiri

b. Not corrected for ties.

Perbandingan antara Ekstrak Minyak Atsiri Daun Kemangi 45% dan Ketokonazol 2%

Ranks				
	Ekstrak minyak atsiri	N	Mean Rank	Sum of Ranks
Diameter zona hambatan	Ekstrak 45%	4	2,50	10,00
koloni fungi <i>Candida albicans</i>	Ketokonazol 2%	4	6,50	26,00
	Total	8		

Test Statistics ^a	
	Diameter zona hambatan koloni fungi <i>Candida albicans</i>
Mann-Whitney U	,000
Wilcoxon W	10,000
Z	-2,530
Asymp. Sig. (2-tailed)	,011
Exact Sig. [2*(1-tailed Sig.)]	,029 ^b

a. Grouping Variable: Ekstrak minyak atsiri

b. Not corrected for ties.

Perbandingan antara Ekstrak Minyak Atsiri Daun Kemangi 0% dan Ketokonazol 2%

Ranks

	Ekstrak minyak atsiri	N	Mean Rank	Sum of Ranks
Diameter zona hambatan koloni fungi Candida albicans	Ekstrak 0%	4	2,50	10,00
	Ketokonazol 2%	4	6,50	26,00
	Total	8		

Test Statistics^a

	Diameter zona hambatan koloni fungi Candida albicans
Mann-Whitney U	,000
Wilcoxon W	10,000
Z	-2,530
Asymp. Sig. (2-tailed)	,011
Exact Sig. [2*(1-tailed Sig.)]	,029 ^b

a. Grouping Variable: Ekstrak minyak atsiri

b. Not corrected for ties.



LAMPIRAN 5 Hubungan antara ekstrak minyak atsiri daun kemangi (*Ocimum basilicum* L.) dan diameter zona hambatan koloni fungi *Candida albicans* pada medium SDA (Korelasi Spearman)

Correlations

			Ekstrak minyak atsiri daun kemangi (<i>Ocimum sanctum</i> L.)	Diameter zona hambatan koloni fungi <i>Candida albicans</i> pada medium SDA
Spearman's rho	Ekstrak minyak atsiri daun kemangi (<i>Ocimum basilicum</i>)	Correlation Coefficient	1,000	,996**
		Sig. (2-tailed)	.	,000
		N	24	24
	Diameter zona hambatan koloni fungi <i>Candida albicans</i> pada medium SDA	Correlation Coefficient	,996**	1,000
		Sig. (2-tailed)	,000	.
		N	24	24

** . Correlation is significant at the 0.01 level (2-tailed).



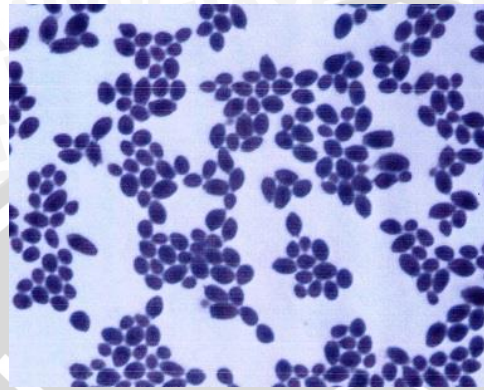
LAMPIRAN 6 GAMBAR HASIL PENELITIAN



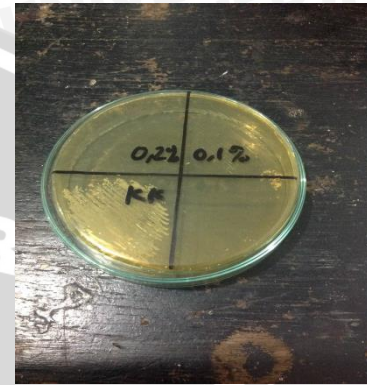
Hasil Ekstrak minyak atsiri daun kemangi (*Ocimum basilicum L.*)



Alat yang digunakan Untuk Ekstrak minyak atsiri daun kemangi (*Ocimum basilicum L.*)



(a)

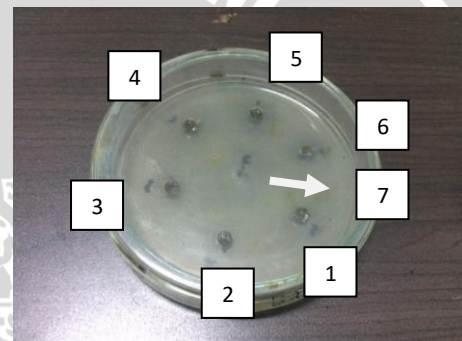
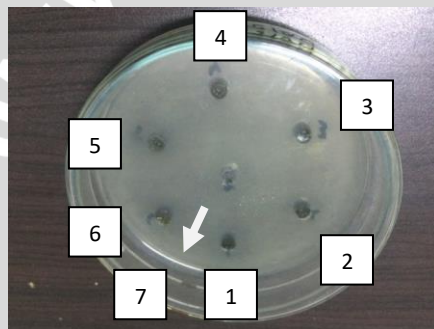
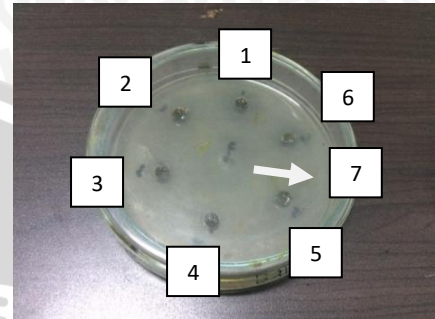
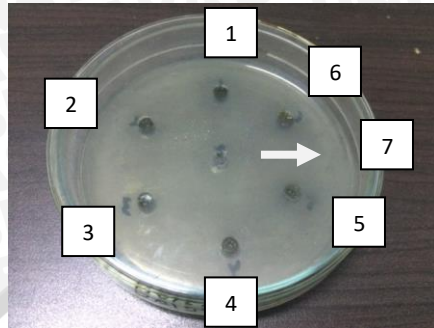


(b)

Morfologi Koloni dan Sel *Candida albicans* (a) Jamur *Candida albicans* ada Pengecatan Gram Menunjukkan Sifat Gram Positif dan terdapat *Budding Cells* (perbesaran 100x); (b) Koloni *Candida albicans* pada Medium SDA



Gambaran Mikroskopis Uji *Germinating Tube* pada *Candida albicans* yang Menunjukkan Gambaran Khas Pseudohifa



Hasil Pengamatan Zona Hambatan Isolat *Candida albicans*

1. Ketokonazol 2%, 2. Minyak Atsiri Daun kemangi 45%, 3. Minyak Atsiri Daun kemangi 50%, 4. Minyak Atsiri Daun kemangi 55%, 5. Minyak Atsiri Daun kemangi 60%, 6. Minyak Atsiri Daun kemangi 65%, 7. Minyak Atsiri Daun kemangi 0%