

LAMPIRAN 4

ANALISIS STATISTIK

Uji Normalitas

Tests of Normality

	Kolmogorov-Smirnov ^a			Shapiro-Wilk		
	Statistic	df	Sig.	Statistic	df	Sig.
JK Jamur	.136	24	.200*	.947	24	.239

*. This is a lower bound of the true significance.

a. Lilliefors Significance Correction

Nilai Signifikansi = 0.239 ($p > 0,05$) yang berarti distribusi data normal

Uji Homogenitas

Test of Homogeneity of Variances

JK Jamur

Levene Statistic	df1	df2	Sig.
2.144	7	16	.098

Nilai Signifikansi = 0,098 ($p > 0,05$) yang berarti variasi data homogen

Uji One-Way ANOVA

One-Way

Descriptives

JK Jamur

	N	Mean	Std. Deviation	Std. Error	95% Confidence Interval for Mean		Minimum	Maximum
					Lower Bound	Upper Bound		
0	3	1696667	615006.77503	355074.3	168905.1438	3224428.190	1260000	2400000
7.5	3	267946.7	76082.22808	43926.09	78947.9347	456945.3986	180864.0	321536.0
15	3	216032.0	35168.00000	20304.25	128669.8450	303394.1550	180864.0	251200.0
22.5	3	172228.0	30863.79244	17819.22	95558.0893	248897.9107	136686.0	192268.0
30	3	122885.0	17521.12163	10115.82	79360.1210	166409.8790	102656.0	133283.0
37.5	3	13665.00	2322.74170	1341.036	7894.9898	19435.0102	12057.00	16328.00
45	3	30.3333	11.59023	6.69162	1.5416	59.1251	17.00	38.00
52.5	3	.0000	.00000	.00000	.0000	.0000	.00	.00
Total	24	311181.7	573900.03352	117146.9	68844.9777	553518.4390	.00	2400000

ANOVA

ANOVA

JK Jamur

	Sum of Squares	df	Mean Square	F	Sig.
Between Groups	6802261543571	7	971751649081.6	20.113	.000
Within Groups	773047171274.0	16	48315448204.625		
Total	7575308714845	23			

Nilai Sinifikansi = 0,000 (p<0,05) yang berarti data signifikan

Post Hoc Test

Multiple Comparisons

Dependent Variable: JK Jamur
Tukey HSD

(I) Kelompok	(J) Kelompok	Mean Difference (I-J)	Std. Error	Sig.	95% Confidence Interval	
					Lower Bound	Upper Bound
0	7.5	1428720.0*	179472.3	.000	807359.9259	2050080.074
	15	1480634.7*	179472.3	.000	859274.5926	2101994.741
	22.5	1524438.7*	179472.3	.000	903078.5926	2145798.741
	30	1573781.7*	179472.3	.000	952421.5926	2195141.741
	37.5	1683001.7*	179472.3	.000	1061641.593	2304361.741
	45	1696636.3*	179472.3	.000	1075276.259	2317996.407
	52.5	1696666.7*	179472.3	.000	1075306.593	2318026.741
7.5	0	-1428720.0*	179472.3	.000	-2050080.07	-807359.9259
	15	51914.6667	179472.3	1.000	-569445.4074	673274.7408
	22.5	95718.6667	179472.3	.999	-525641.4074	717078.7408
	30	145061.67	179472.3	.990	-476298.4074	766421.7408
	37.5	254281.67	179472.3	.837	-367078.4074	875641.7408
	45	267916.33	179472.3	.801	-353443.7408	889276.4074
	52.5	267946.67	179472.3	.801	-353413.4074	889306.7408
15	0	-1480634.7*	179472.3	.000	-2101994.74	-859274.5926
	7.5	-51914.6667	179472.3	1.000	-673274.7408	569445.4074
	22.5	43804.0000	179472.3	1.000	-577556.0741	665164.0741
	30	93147.0000	179472.3	.999	-528213.0741	714507.0741
	37.5	202367.00	179472.3	.941	-418993.0741	823727.0741
	45	216001.67	179472.3	.919	-405358.4074	837361.7408
	52.5	216032.00	179472.3	.919	-405328.0741	837392.0741
22.5	0	-1524438.7*	179472.3	.000	-2145798.74	-903078.5926
	7.5	-95718.6667	179472.3	.999	-717078.7408	525641.4074
	15	-43804.0000	179472.3	1.000	-665164.0741	577556.0741
	30	49343.0000	179472.3	1.000	-572017.0741	670703.0741
	37.5	158563.00	179472.3	.984	-462797.0741	779923.0741
	45	172197.67	179472.3	.974	-449162.4074	793557.7408
	52.5	172228.00	179472.3	.974	-449132.0741	793588.0741
30	0	-1573781.7*	179472.3	.000	-2195141.74	-952421.5926
	7.5	-145061.67	179472.3	.990	-766421.7408	476298.4074
	15	-93147.0000	179472.3	.999	-714507.0741	528213.0741
	22.5	-49343.0000	179472.3	1.000	-670703.0741	572017.0741
	37.5	109220.00	179472.3	.998	-512140.0741	730580.0741
	45	122854.67	179472.3	.996	-498505.4074	744214.7408
	52.5	122885.00	179472.3	.996	-498475.0741	744245.0741
37.5	0	-1683001.7*	179472.3	.000	-2304361.74	-1061641.59
	7.5	-254281.67	179472.3	.837	-875641.7408	367078.4074
	15	-202367.00	179472.3	.941	-823727.0741	418993.0741
	22.5	-158563.00	179472.3	.984	-779923.0741	462797.0741
	30	-109220.00	179472.3	.998	-730580.0741	512140.0741
	45	13634.6667	179472.3	1.000	-607725.4074	634994.7408
	52.5	13665.0000	179472.3	1.000	-607695.0741	635025.0741
45	0	-1696636.3*	179472.3	.000	-2317996.41	-1075276.26
	7.5	-267916.33	179472.3	.801	-889276.4074	353443.7408
	15	-216001.67	179472.3	.919	-837361.7408	405358.4074
	22.5	-172197.67	179472.3	.974	-793557.7408	449162.4074
	30	-122854.67	179472.3	.996	-744214.7408	498505.4074
	37.5	-13634.6667	179472.3	1.000	-634994.7408	607725.4074
	52.5	30.3333	179472.3	1.000	-621329.7408	621390.4074
52.5	0	-1696666.7*	179472.3	.000	-2318026.74	-1075306.59
	7.5	-267946.67	179472.3	.801	-889306.7408	353413.4074
	15	-216032.00	179472.3	.919	-837392.0741	405328.0741
	22.5	-172228.00	179472.3	.974	-793588.0741	449132.0741
	30	-122885.00	179472.3	.996	-744245.0741	498475.0741
	37.5	-13665.0000	179472.3	1.000	-635025.0741	607695.0741
	45	-30.3333	179472.3	1.000	-621390.4074	621329.7408

*. The mean difference is significant at the .05 level.

Homogeneous Subsets

JK Jamur

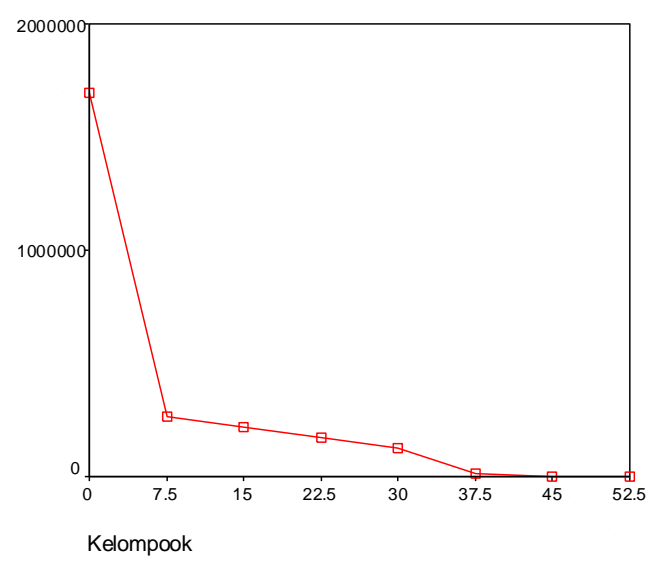
Tukey HSD^a

Kelompok	N	Subset for alpha = .05	
		1	2
52.5	3	.0000	
45	3	30.3333	
37.5	3	13665.00	
30	3	122885.0	
22.5	3	172228.0	
15	3	216032.0	
7.5	3	267946.7	
0	3		1696667
Sig.		.801	1.000

Means for groups in homogeneous subsets are displayed.

a. Uses Harmonic Mean Sample Size = 3.000.

Means Plot



Uji Korelasi

Correlations

		Dosis	JK Jamur
Dosis	Pearson Correlation	1	-.674**
	Sig. (2-tailed)	.	.000
	N	24	24
JK Jamur	Pearson Correlation	-.674**	1
	Sig. (2-tailed)	.000	.
	N	24	24

** . Correlation is significant at the 0.01 level (2-tailed).

Uji Regresi

Model Summary

Model	R	R Square	Adjusted R Square	Std. Error of the Estimate
1	.674 ^a	.454	.429	433729.762

a. Predictors: (Constant), Dosis

ANOVA^a

Model		Sum of Squares	df	Mean Square	F	Sig.
1	Regression	3436635581702	1	3436635581702	18.268	.000 ^a
	Residual	4138673133143	22	188121506051.9		
	Total	7575308714845	23			

a. Predictors: (Constant), Dosis

b. Dependent Variable: JK Jamur

Coefficients^a

Model		Unstandardized Coefficients		Standardized Coefficients	t	Sig.
		B	Std. Error	Beta		
1	(Constant)	889210.6	161641.5		5.501	.000
	Dosis	-22020.1	5151.962	-.674	-4.274	.000

a. Dependent Variable: JK Jamur

Grafik Interaksi

