

### LAMPIRAN 1

#### Proses Ekstraksi



Buah Mahkota Dewa



Buah Mahkota Dewa Kering



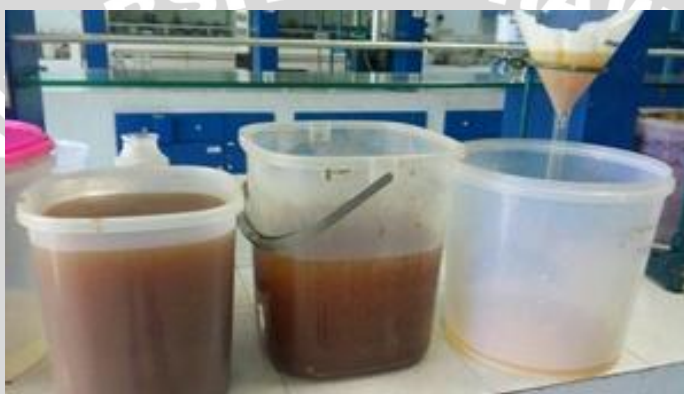
Buah kering Dipisahkan dari Biji



Buah Mahkota Dewa yang Sudah Dihaluskan



Proses Maserasi



Proses Partisi



Proses Sentrifugasi n-butanol

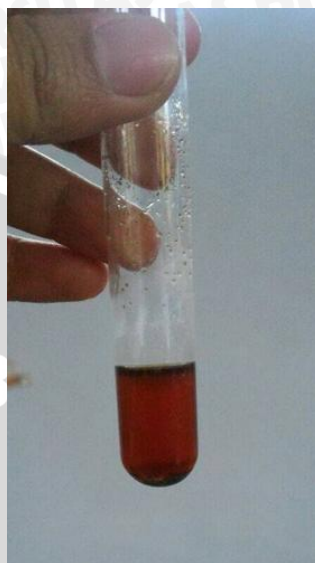


## LAMPIRAN 2

### Proses Uji Fitokimia



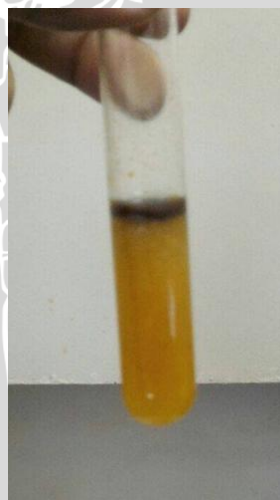
Uji Alkaloid Wagner Negatif



Uji Flavonoid Positif



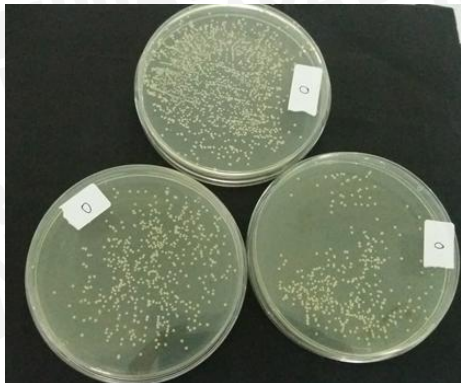
Uji Alkaloid Mayer Negatif



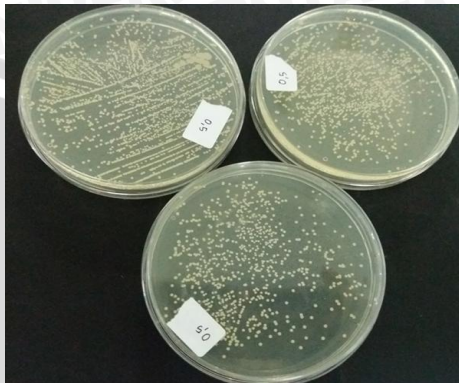
Uji Saponin Negatif

### LAMPIRAN 3

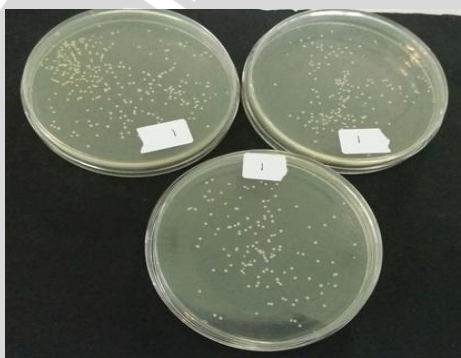
#### Proses Pengulangan



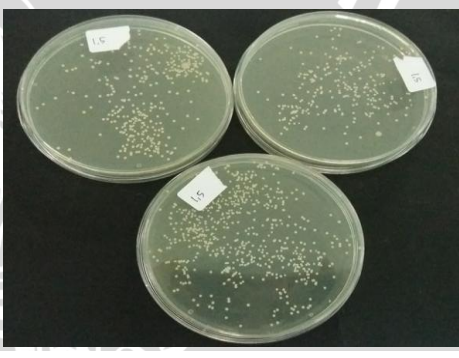
Konsentrasi 0% Pengenceran 10.000x



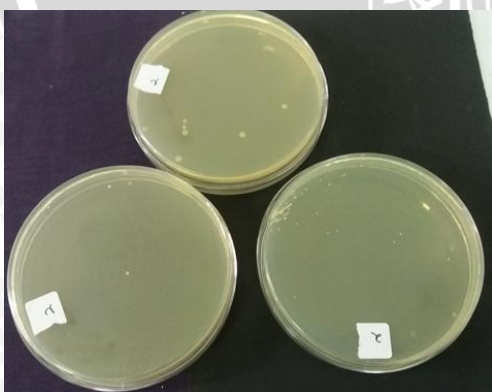
Konsentrasi 0.5% Pengenceran 1000x



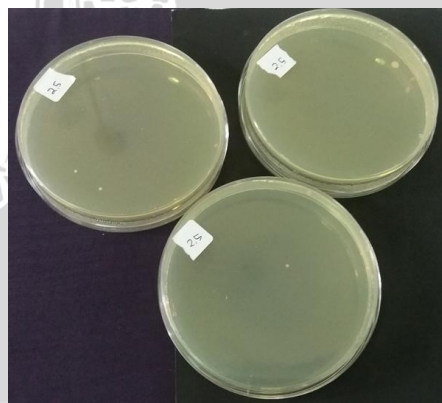
Konsentrasi 1% Pengenceran 1000x



Konsentrasi 1.5% Pengenceran 100x

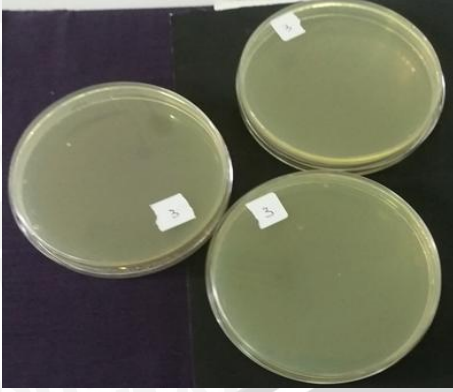


Konsentrasi 2%

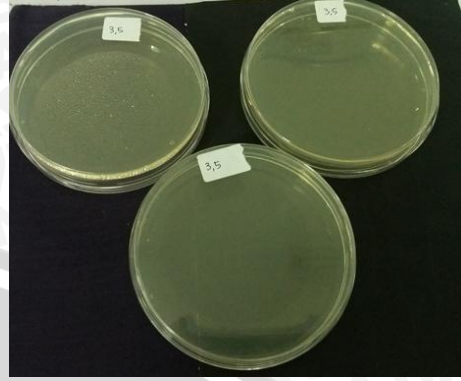


Konsentrasi 2.5%





Konsentrasi 3%



Konsentrasi 3.5%



Colony Counter