

LAMPIRAN

Lampiran 1. Hasil Uji Statistik

Uji Asumsi Data

Tests of Normality

	Kolmogorov-Smirnov ^a			Shapiro-Wilk		
	Statistic	df	Sig.	Statistic	df	Sig.
Nyamuk Nempel	.139	20	.200*	.965	20	.643

*. This is a lower bound of the true significance.

a. Lilliefors Significance Correction

Test of Homogeneity of Variances

Nyamuk Nempel

Levene Statistic	df1	df2	Sig.
1.214	4	15	.346

A. Uji ANOVA Perbedaan Pengaruh antar Perlakuan terhadap Potensi

Dekok

Descriptives

Nyamuk Nempel

	N	Mean	Std. Deviation	Std. Error	95% Confidence Interval for Mean		Minimum	Maximum
					Lower Bound	Upper Bound		
K Neg	4	44.25	3.500	1.750	38.68	49.82	40	48
K Pos	4	.00	.000	.000	.00	.00	0	0
50%	4	4.00	1.414	.707	1.75	6.25	2	5
55%	4	.50	.577	.289	-.42	1.42	0	1
60%	4	.75	.957	.479	-.77	2.27	0	2
Total	20	9.90	17.749	3.969	1.59	18.21	0	48



ANOVA

Nyamuk Nempel

	Sum of Squares	df	Mean Square	F	Sig.
Between Groups	5939.300	4	1484.825	478.976	.000
Within Groups	46.500	15	3.100		
Total	5985.800	19			

Uji ANOVA untuk Melihat Perbedaan Potensi antar Perlakuan pada Jam ke-0

Oneway

Descriptives

Hinggap

	N	Mean	Std. Deviation	Std. Error	95% Confidence Interval for Mean		Minimum	Maximum
					Lower Bound	Upper Bound		
Oj KN	4	8.2500	2.36291	1.18145	4.4901	12.0099	5.00	10.00
Oj KP	4	.0000	.00000	.00000	.0000	.0000	.00	.00
Oj 50	4	1.5000	1.73205	.86603	-1.2561	4.2561	.00	4.00
Oj 55	4	.2500	.50000	.25000	-.5456	1.0456	.00	1.00
Oj 60	4	.2500	.50000	.25000	-.5456	1.0456	.00	1.00
Total	20	2.0500	3.44085	.76940	.4396	3.6604	.00	10.00

Test of Homogeneity of Variances

Hinggap

Levene Statistic	df1	df2	Sig.
1.114	4	15	.386

ANOVA

Hinggap

	Sum of Squares	df	Mean Square	F	Sig.
Between Groups	197.700	4	49.425	27.206	.000
Within Groups	27.250	15	1.817		
Total	224.950	19			



Post Hoc Tests

Multiple Comparisons

Dependent Variable: Hinggap

Tukey HSD

(I) Kelompok	(J) Kelompok	Mean Difference (I-J)	Std. Error	Sig.	95% Confidence Interval	
					Lower Bound	Upper Bound
Oj KN	Oj KP	8.2500*	.95307	.000	5.3070	11.1930
	Oj 50	6.7500*	.95307	.000	3.8070	9.6930
	Oj 55	8.0000*	.95307	.000	5.0570	10.9430
	Oj 60	8.0000*	.95307	.000	5.0570	10.9430
Oj KP	Oj KN	-8.2500*	.95307	.000	-11.1930	-5.3070
	Oj 50	-1.5000	.95307	.534	-4.4430	1.4430
	Oj 55	-.2500	.95307	.999	-3.1930	2.6930
	Oj 60	-.2500	.95307	.999	-3.1930	2.6930
Oj 50	Oj KN	-6.7500*	.95307	.000	-9.6930	-3.8070
	Oj KP	1.5000	.95307	.534	-1.4430	4.4430
	Oj 55	1.2500	.95307	.689	-1.6930	4.1930
	Oj 60	1.2500	.95307	.689	-1.6930	4.1930
Oj 55	Oj KN	-8.0000*	.95307	.000	-10.9430	-5.0570
	Oj KP	.2500	.95307	.999	-2.6930	3.1930
	Oj 50	-1.2500	.95307	.689	-4.1930	1.6930
	Oj 60	.0000	.95307	1.000	-2.9430	2.9430
Oj 60	Oj KN	-8.0000*	.95307	.000	-10.9430	-5.0570
	Oj KP	.2500	.95307	.999	-2.6930	3.1930
	Oj 50	-1.2500	.95307	.689	-4.1930	1.6930
	Oj 55	.0000	.95307	1.000	-2.9430	2.9430

*. The mean difference is significant at the .05 level.



Homogeneous Subsets

Hinggap

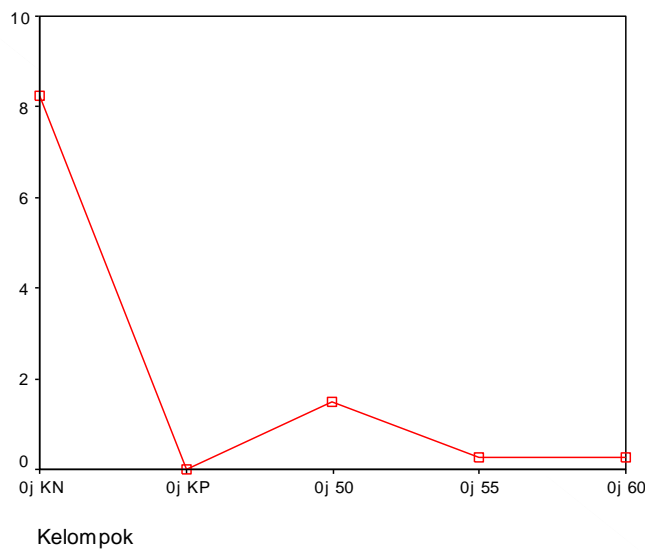
Tukey HSD^a

Kelompok	N	Subset for alpha = .05	
		1	2
0j KP	4	.0000	
0j 55	4	.2500	
0j 60	4	.2500	
0j 50	4	1.5000	
0j KN	4		8.2500
Sig.		.534	1.000

Means for groups in homogeneous subsets are displayed.

a. Uses Harmonic Mean Sample Size = 4.000.

Means Plots



Uji ANOVA untuk Melihat Perbedaan Potensi antar Perlakuan pada Jam ke-1

Oneway

Descriptives

Hinggap

	N	Mean	Std. Deviation	Std. Error	95% Confidence Interval for Mean		Minimum	Maximum
					Lower Bound	Upper Bound		
1j KN	4	6.5000	1.29099	.64550	4.4457	8.5543	5.00	8.00
1j KP	4	.0000	.00000	.00000	.0000	.0000	.00	.00
1j 50	4	1.0000	.81650	.40825	-.2992	2.2992	.00	2.00
1j 55	4	.0000	.00000	.00000	.0000	.0000	.00	.00
1j 60	4	.2500	.50000	.25000	-.5456	1.0456	.00	1.00
Total	20	1.5500	2.64525	.59150	.3120	2.7880	.00	8.00

Test of Homogeneity of Variances

Hinggap

Levene Statistic	df1	df2	Sig.
.539	4	15	.710

ANOVA

Hinggap

	Sum of Squares	df	Mean Square	F	Sig.
Between Groups	125.200	4	31.300	60.581	.000
Within Groups	7.750	15	.517		
Total	132.950	19			



Post Hoc Tests

Multiple Comparisons

Dependent Variable: Hinggap

Tukey HSD

(I) Kelompok	(J) Kelompok	Mean Difference (I-J)	Std. Error	Sig.	95% Confidence Interval	
					Lower Bound	Upper Bound
1j KN	1j KP	6.5000*	.50827	.000	4.9305	8.0695
	1j 50	5.5000*	.50827	.000	3.9305	7.0695
	1j 55	6.5000*	.50827	.000	4.9305	8.0695
	1j 60	6.2500*	.50827	.000	4.6805	7.8195
1j KP	1j KN	-6.5000*	.50827	.000	-8.0695	-4.9305
	1j 50	-1.0000	.50827	.327	-2.5695	.5695
	1j 55	.0000	.50827	1.000	-1.5695	1.5695
	1j 60	-.2500	.50827	.987	-1.8195	1.3195
1j 50	1j KN	-5.5000*	.50827	.000	-7.0695	-3.9305
	1j KP	1.0000	.50827	.327	-.5695	2.5695
	1j 55	1.0000	.50827	.327	-.5695	2.5695
	1j 60	.7500	.50827	.592	-.8195	2.3195
1j 55	1j KN	-6.5000*	.50827	.000	-8.0695	-4.9305
	1j KP	.0000	.50827	1.000	-1.5695	1.5695
	1j 50	-1.0000	.50827	.327	-2.5695	.5695
	1j 60	-.2500	.50827	.987	-1.8195	1.3195
1j 60	1j KN	-6.2500*	.50827	.000	-7.8195	-4.6805
	1j KP	.2500	.50827	.987	-1.3195	1.8195
	1j 50	-.7500	.50827	.592	-2.3195	.8195
	1j 55	.2500	.50827	.987	-1.3195	1.8195

*. The mean difference is significant at the .05 level.



Homogeneous Subsets

Hinggap

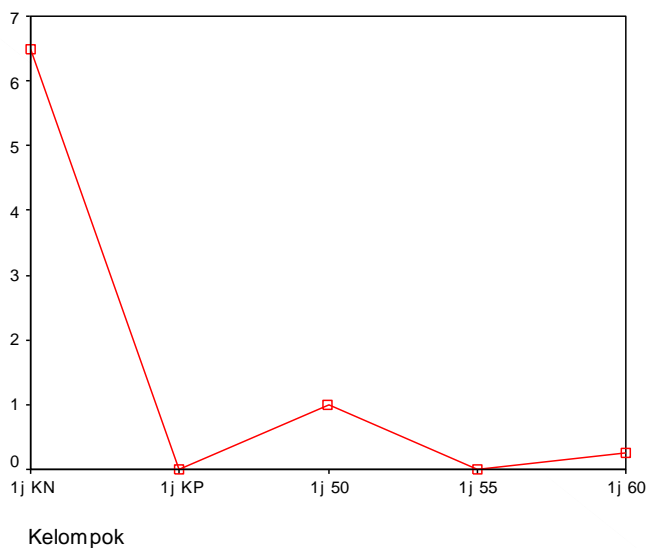
Tukey HSD^a

Kelompok	N	Subset for alpha = .05	
		1	2
1j KP	4	.0000	
1j 55	4	.0000	
1j 60	4	.2500	
1j 50	4	1.0000	
1j KN	4		6.5000
Sig.		.327	1.000

Means for groups in homogeneous subsets are displayed.

a. Uses Harmonic Mean Sample Size = 4.000.

Means Plots



Uji ANOVA untuk Melihat Perbedaan Potensi antar Perlakuan pada Jam ke-2

Oneway

Descriptives

Hinggap

	N	Mean	Std. Deviation	Std. Error	95% Confidence Interval for Mean		Minimum	Maximum
					Lower Bound	Upper Bound		
2j KN	4	8.7500	1.50000	.75000	6.3632	11.1368	7.00	10.00
2j KP	4	.0000	.00000	.00000	.0000	.0000	.00	.00
2j 50	4	.0000	.00000	.00000	.0000	.0000	.00	.00
2j 55	4	.0000	.00000	.00000	.0000	.0000	.00	.00
2j 60	4	.0000	.00000	.00000	.0000	.0000	.00	.00
Total	20	1.7500	3.64005	.81394	.0464	3.4536	.00	10.00

Test of Homogeneity of Variances

Hinggap

Levene Statistic	df1	df2	Sig.
1.256	4	15	.330

ANOVA

Hinggap

	Sum of Squares	df	Mean Square	F	Sig.
Between Groups	245.000	4	61.250	136.111	.000
Within Groups	6.750	15	.450		
Total	251.750	19			



Post Hoc Tests

Multiple Comparisons

Dependent Variable: Hinggap

Tukey HSD

(I) Kelompok	(J) Kelompok	Mean Difference (I-J)	Std. Error	Sig.	95% Confidence Interval	
					Lower Bound	Upper Bound
2j KN	2j KP	8.7500*	.47434	.000	7.2853	10.2147
	2j 50	8.7500*	.47434	.000	7.2853	10.2147
	2j 55	8.7500*	.47434	.000	7.2853	10.2147
	2j 60	8.7500*	.47434	.000	7.2853	10.2147
2j KP	2j KN	-8.7500*	.47434	.000	-10.2147	-7.2853
	2j 50	.0000	.47434	1.000	-1.4647	1.4647
	2j 55	.0000	.47434	1.000	-1.4647	1.4647
	2j 60	.0000	.47434	1.000	-1.4647	1.4647
2j 50	2j KN	-8.7500*	.47434	.000	-10.2147	-7.2853
	2j KP	.0000	.47434	1.000	-1.4647	1.4647
	2j 55	.0000	.47434	1.000	-1.4647	1.4647
	2j 60	.0000	.47434	1.000	-1.4647	1.4647
2j 55	2j KN	-8.7500*	.47434	.000	-10.2147	-7.2853
	2j KP	.0000	.47434	1.000	-1.4647	1.4647
	2j 50	.0000	.47434	1.000	-1.4647	1.4647
	2j 60	.0000	.47434	1.000	-1.4647	1.4647
2j 60	2j KN	-8.7500*	.47434	.000	-10.2147	-7.2853
	2j KP	.0000	.47434	1.000	-1.4647	1.4647
	2j 50	.0000	.47434	1.000	-1.4647	1.4647
	2j 55	.0000	.47434	1.000	-1.4647	1.4647

*. The mean difference is significant at the .05 level.



Homogeneous Subsets

Hinggap

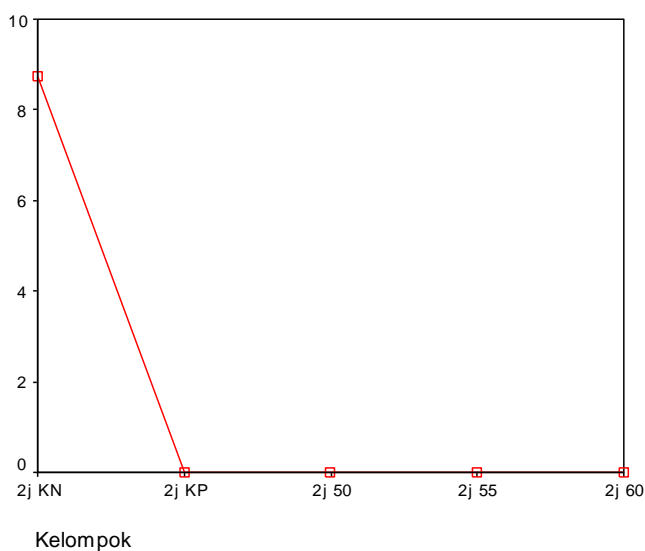
Tukey HSD^a

Kelompok	N	Subset for alpha = .05	
		1	2
2j KP	4	.0000	
2j 50	4	.0000	
2j 55	4	.0000	
2j 60	4	.0000	
2j KN	4		8.7500
Sig.		1.000	1.000

Means for groups in homogeneous subsets are displayed.

a. Uses Harmonic Mean Sample Size = 4.000.

Means Plots



Uji ANOVA untuk Melihat Perbedaan Potensi antar Perlakuan pada Jam ke-4

Oneway

Descriptives

Hinggap

	N	Mean	Std. Deviation	Std. Error	95% Confidence Interval for Mean		Minimum	Maximum
					Lower Bound	Upper Bound		
4j KN	4	11.2500	1.25831	.62915	9.2478	13.2522	10.00	13.00
4j KP	4	.0000	.00000	.00000	.0000	.0000	.00	.00
4j 50	4	.5000	1.00000	.50000	-1.0912	2.0912	.00	2.00
4j 55	4	.0000	.00000	.00000	.0000	.0000	.00	.00
4j 60	4	.0000	.00000	.00000	.0000	.0000	.00	.00
Total	20	2.3500	4.61434	1.03180	.1904	4.5096	.00	13.00

Test of Homogeneity of Variances

Hinggap

Levene Statistic	df1	df2	Sig.
.139	4	15	.965

ANOVA

Hinggap

	Sum of Squares	df	Mean Square	F	Sig.
Between Groups	396.800	4	99.200	192.000	.000
Within Groups	7.750	15	.517		
Total	404.550	19			



Post Hoc Tests

Multiple Comparisons

Dependent Variable: Hinggap

Tukey HSD

(I) Kelompok	(J) Kelompok	Mean Difference (I-J)	Std. Error	Sig.	95% Confidence Interval	
					Lower Bound	Upper Bound
4j KN	4j KP	11.2500*	.50827	.000	9.6805	12.8195
	4j 50	10.7500*	.50827	.000	9.1805	12.3195
	4j 55	11.2500*	.50827	.000	9.6805	12.8195
	4j 60	11.2500*	.50827	.000	9.6805	12.8195
4j KP	4j KN	-11.2500*	.50827	.000	-12.8195	-9.6805
	4j 50	-.5000	.50827	.858	-2.0695	1.0695
	4j 55	.0000	.50827	1.000	-1.5695	1.5695
	4j 60	.0000	.50827	1.000	-1.5695	1.5695
4j 50	4j KN	-10.7500*	.50827	.000	-12.3195	-9.1805
	4j KP	.5000	.50827	.858	-1.0695	2.0695
	4j 55	.5000	.50827	.858	-1.0695	2.0695
	4j 60	.5000	.50827	.858	-1.0695	2.0695
4j 55	4j KN	-11.2500*	.50827	.000	-12.8195	-9.6805
	4j KP	.0000	.50827	1.000	-1.5695	1.5695
	4j 50	-.5000	.50827	.858	-2.0695	1.0695
	4j 60	.0000	.50827	1.000	-1.5695	1.5695
4j 60	4j KN	-11.2500*	.50827	.000	-12.8195	-9.6805
	4j KP	.0000	.50827	1.000	-1.5695	1.5695
	4j 50	-.5000	.50827	.858	-2.0695	1.0695
	4j 55	.0000	.50827	1.000	-1.5695	1.5695

*. The mean difference is significant at the .05 level.



Homogeneous Subsets

Hinggap

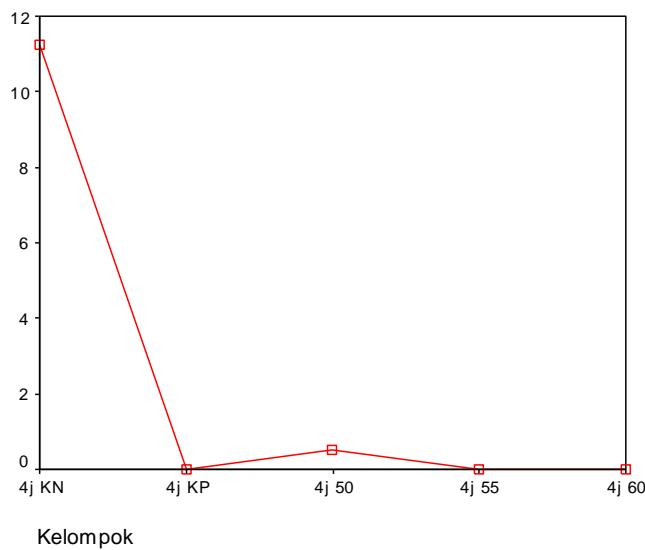
Tukey HSD^a

Kelompok	N	Subset for alpha = .05	
		1	2
4j KP	4	.0000	
4j 55	4	.0000	
4j 60	4	.0000	
4j 50	4	.5000	
4j KN	4		11.2500
Sig.		.858	1.000

Means for groups in homogeneous subsets are displayed.

a. Uses Harmonic Mean Sample Size = 4.000.

Means Plots



Uji ANOVA untuk Melihat Perbedaan Potensi antar Perlakuan pada Jam ke-6

Oneway

Descriptives

Hinggap

	N	Mean	Std. Deviation	Std. Error	95% Confidence Interval for Mean		Minimum	Maximum
					Lower Bound	Upper Bound		
6j KN	4	9.5000	2.51661	1.25831	5.4955	13.5045	7.00	13.00
6j KP	4	.0000	.00000	.00000	.0000	.0000	.00	.00
6j 50	4	1.0000	1.41421	.70711	-1.2503	3.2503	.00	3.00
6j 55	4	.2500	.50000	.25000	-.5456	1.0456	.00	1.00
6j 60	4	.2500	.50000	.25000	-.5456	1.0456	.00	1.00
Total	20	2.2000	3.94168	.88139	.3552	4.0448	.00	13.00

Test of Homogeneity of Variances

Hinggap

Levene Statistic	df1	df2	Sig.
2.140	4	15	.126

ANOVA

Hinggap

	Sum of Squares	df	Mean Square	F	Sig.
Between Groups	268.700	4	67.175	38.024	.000
Within Groups	26.500	15	1.767		
Total	295.200	19			



Post Hoc Tests

Multiple Comparisons

Dependent Variable: Hinggap

Tukey HSD

(I) Kelompok	(J) Kelompok	Mean Difference (I-J)	Std. Error	Sig.	95% Confidence Interval	
					Lower Bound	Upper Bound
6j KN	6j KP	9.5000*	.93986	.000	6.5978	12.4022
	6j 50	8.5000*	.93986	.000	5.5978	11.4022
	6j 55	9.2500*	.93986	.000	6.3478	12.1522
	6j 60	9.2500*	.93986	.000	6.3478	12.1522
6j KP	6j KN	-9.5000*	.93986	.000	-12.4022	-6.5978
	6j 50	-1.0000	.93986	.822	-3.9022	1.9022
	6j 55	-.2500	.93986	.999	-3.1522	2.6522
	6j 60	-.2500	.93986	.999	-3.1522	2.6522
6j 50	6j KN	-8.5000*	.93986	.000	-11.4022	-5.5978
	6j KP	1.0000	.93986	.822	-1.9022	3.9022
	6j 55	.7500	.93986	.927	-2.1522	3.6522
	6j 60	.7500	.93986	.927	-2.1522	3.6522
6j 55	6j KN	-9.2500*	.93986	.000	-12.1522	-6.3478
	6j KP	.2500	.93986	.999	-2.6522	3.1522
	6j 50	-.7500	.93986	.927	-3.6522	2.1522
	6j 60	.0000	.93986	1.000	-2.9022	2.9022
6j 60	6j KN	-9.2500*	.93986	.000	-12.1522	-6.3478
	6j KP	.2500	.93986	.999	-2.6522	3.1522
	6j 50	-.7500	.93986	.927	-3.6522	2.1522
	6j 55	.0000	.93986	1.000	-2.9022	2.9022

*. The mean difference is significant at the .05 level.



Homogeneous Subsets

Hinggap

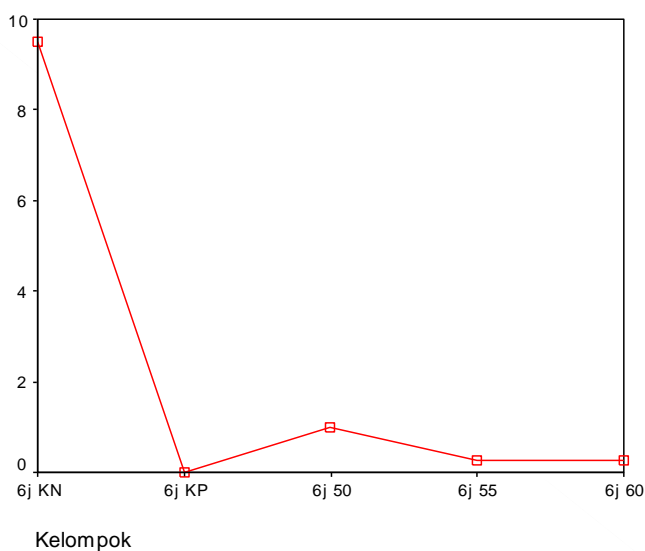
Tukey HSD^a

Kelompok	N	Subset for alpha = .05	
		1	2
6j KP	4	.0000	
6j 55	4	.2500	
6j 60	4	.2500	
6j 50	4	1.0000	
6j KN	4		9.5000
Sig.		.822	1.000

Means for groups in homogeneous subsets are displayed.

a. Uses Harmonic Mean Sample Size = 4.000.

Means Plots



B. Uji ANOVA untuk Melihat Perbedaan Potensi antar Jam Pengamatan pada

Setiap Perlakuan

Oneway

Descriptives

Hinggap

	N	Mean	Std. Deviation	Std. Error	95% Confidence Interval for Mean		Minimum	Maximum
					Lower Bound	Upper Bound		
0j KN	4	8.2500	2.36291	1.18145	4.4901	12.0099	5.00	10.00
1j KN	4	6.5000	1.29099	.64550	4.4457	8.5543	5.00	8.00
2j KN	4	8.7500	1.50000	.75000	6.3632	11.1368	7.00	10.00
4j KN	4	11.2500	1.25831	.62915	9.2478	13.2522	10.00	13.00
6j KN	4	9.5000	2.51661	1.25831	5.4955	13.5045	7.00	13.00
Total	20	8.8500	2.30046	.51440	7.7734	9.9266	5.00	13.00

Test of Homogeneity of Variances

Hinggap

Levene Statistic	df1	df2	Sig.
.701	4	15	.603

ANOVA

Hinggap

	Sum of Squares	df	Mean Square	F	Sig.
Between Groups	48.300	4	12.075	3.467	.034
Within Groups	52.250	15	3.483		
Total	100.550	19			

Post Hoc Tests

Multiple Comparisons

Dependent Variable: Hinggap

Tukey HSD

(I) Kelompok	(J) Kelompok	Mean Difference (I-J)	Std. Error	Sig.	95% Confidence Interval	
					Lower Bound	Upper Bound
0j KN	1j KN	1.7500	1.31972	.680	-2.3252	5.8252
	2j KN	-.5000	1.31972	.995	-4.5752	3.5752
	4j KN	-3.0000	1.31972	.207	-7.0752	1.0752
	6j KN	-1.2500	1.31972	.874	-5.3252	2.8252
1j KN	0j KN	-1.7500	1.31972	.680	-5.8252	2.3252
	2j KN	-2.2500	1.31972	.460	-6.3252	1.8252
	4j KN	-4.7500*	1.31972	.019	-8.8252	-.6748
	6j KN	-3.0000	1.31972	.207	-7.0752	1.0752
2j KN	0j KN	.5000	1.31972	.995	-3.5752	4.5752
	1j KN	2.2500	1.31972	.460	-1.8252	6.3252
	4j KN	-2.5000	1.31972	.361	-6.5752	1.5752
	6j KN	-.7500	1.31972	.978	-4.8252	3.3252
4j KN	0j KN	3.0000	1.31972	.207	-1.0752	7.0752
	1j KN	4.7500*	1.31972	.019	.6748	8.8252
	2j KN	2.5000	1.31972	.361	-1.5752	6.5752
	6j KN	1.7500	1.31972	.680	-2.3252	5.8252
6j KN	0j KN	1.2500	1.31972	.874	-2.8252	5.3252
	1j KN	3.0000	1.31972	.207	-1.0752	7.0752
	2j KN	.7500	1.31972	.978	-3.3252	4.8252
	4j KN	-1.7500	1.31972	.680	-5.8252	2.3252

*. The mean difference is significant at the .05 level.



Homogeneous Subsets

Hinggap

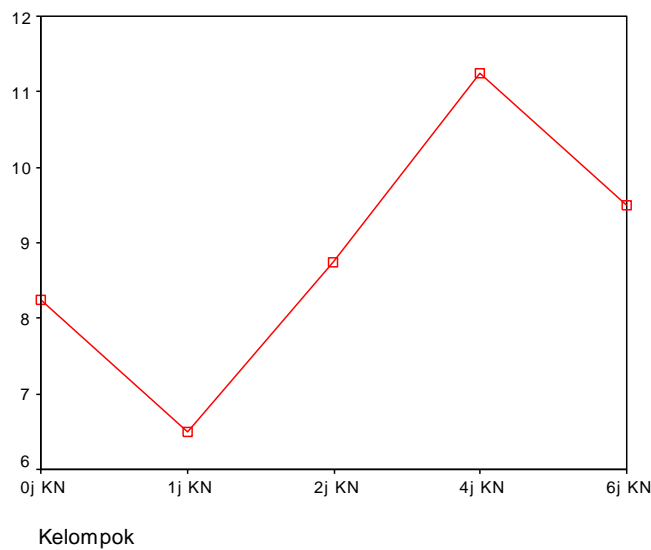
Tukey HSD^a

Kelompok	N	Subset for alpha = .05	
		1	2
1j KN	4	6.5000	
0j KN	4	8.2500	8.2500
2j KN	4	8.7500	8.7500
6j KN	4	9.5000	9.5000
4j KN	4		11.2500
Sig.		.207	.207

Means for groups in homogeneous subsets are displayed.

a. Uses Harmonic Mean Sample Size = 4.000.

Means Plots



Oneway

Descriptives

Hinggap

	N	Mean	Std. Deviation	Std. Error	95% Confidence Interval for Mean		Minimum	Maximum
					Lower Bound	Upper Bound		
					0j 50	4		
1j 50	4	1.0000	.81650	.40825	-.2992	2.2992	.00	2.00
2j 50	4	.0000	.00000	.00000	.0000	.0000	.00	.00
4j 50	4	.5000	1.00000	.50000	-1.0912	2.0912	.00	2.00
6j 50	4	1.0000	1.41421	.70711	-1.2503	3.2503	.00	3.00
Total	20	.8000	1.15166	.25752	.2610	1.3390	.00	4.00

Test of Homogeneity of Variances

Hinggap

Levene Statistic	df1	df2	Sig.
2.135	4	15	.127

ANOVA

Hinggap

	Sum of Squares	df	Mean Square	F	Sig.
Between Groups	5.200	4	1.300	.975	.450
Within Groups	20.000	15	1.333		
Total	25.200	19			



Post Hoc Tests

Multiple Comparisons

Dependent Variable: Hinggap

Tukey HSD

(I) Kelompok	(J) Kelompok	Mean Difference (I-J)	Std. Error	Sig.	95% Confidence Interval	
					Lower Bound	Upper Bound
0j 50	1j 50	.5000	.81650	.971	-2.0213	3.0213
	2j 50	1.5000	.81650	.390	-1.0213	4.0213
	4j 50	1.0000	.81650	.738	-1.5213	3.5213
	6j 50	.5000	.81650	.971	-2.0213	3.0213
1j 50	0j 50	-.5000	.81650	.971	-3.0213	2.0213
	2j 50	1.0000	.81650	.738	-1.5213	3.5213
	4j 50	.5000	.81650	.971	-2.0213	3.0213
	6j 50	.0000	.81650	1.000	-2.5213	2.5213
2j 50	0j 50	-1.5000	.81650	.390	-4.0213	1.0213
	1j 50	-1.0000	.81650	.738	-3.5213	1.5213
	4j 50	-.5000	.81650	.971	-3.0213	2.0213
	6j 50	-1.0000	.81650	.738	-3.5213	1.5213
4j 50	0j 50	-1.0000	.81650	.738	-3.5213	1.5213
	1j 50	-.5000	.81650	.971	-3.0213	2.0213
	2j 50	.5000	.81650	.971	-2.0213	3.0213
	6j 50	-.5000	.81650	.971	-3.0213	2.0213
6j 50	0j 50	-.5000	.81650	.971	-3.0213	2.0213
	1j 50	.0000	.81650	1.000	-2.5213	2.5213
	2j 50	1.0000	.81650	.738	-1.5213	3.5213
	4j 50	.5000	.81650	.971	-2.0213	3.0213



Homogeneous Subsets

Hinggap

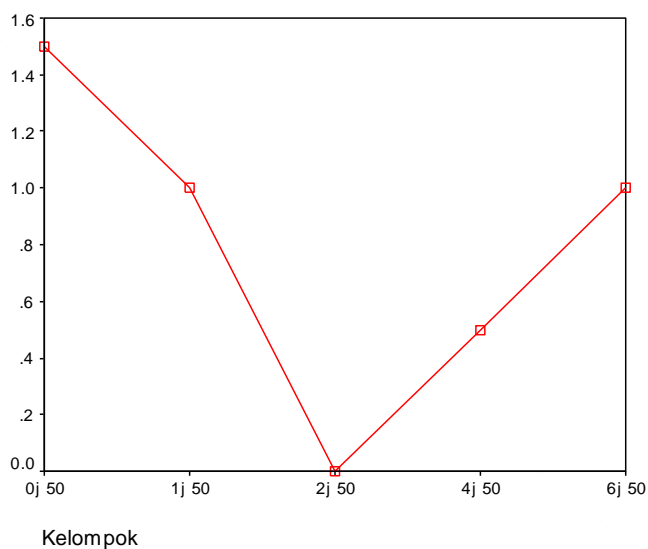
Tukey HSD^a

Kelompok	N	Subset for alpha = .05
		1
2j 50	4	.0000
4j 50	4	.5000
1j 50	4	1.0000
6j 50	4	1.0000
0j 50	4	1.5000
Sig.		.390

Means for groups in homogeneous subsets are displayed.

a. Uses Harmonic Mean Sample Size = 4.000.

Means Plots



Oneway

Descriptives

Hinggap

	N	Mean	Std. Deviation	Std. Error	95% Confidence Interval for Mean		Minimum	Maximum
					Lower Bound	Upper Bound		
0j 55	4	.2500	.50000	.25000	-.5456	1.0456	.00	1.00
1j 55	4	.0000	.00000	.00000	.0000	.0000	.00	.00
2j 55	4	.0000	.00000	.00000	.0000	.0000	.00	.00
4j 55	4	.0000	.00000	.00000	.0000	.0000	.00	.00
6j 55	4	.2500	.50000	.25000	-.5456	1.0456	.00	1.00
Total	20	.1000	.30779	.06882	-.0441	.2441	.00	1.00

Test of Homogeneity of Variances

Hinggap

Levene Statistic	df1	df2	Sig.
.265	4	15	.896

ANOVA

Hinggap

	Sum of Squares	df	Mean Square	F	Sig.
Between Groups	.300	4	.075	.750	.573
Within Groups	1.500	15	.100		
Total	1.800	19			



Post Hoc Tests

Multiple Comparisons

Dependent Variable: Hinggap

Tukey HSD

(I) Kelompok	(J) Kelompok	Mean Difference (I-J)	Std. Error	Sig.	95% Confidence Interval	
					Lower Bound	Upper Bound
0j 55	1j 55	.2500	.22361	.795	-.4405	.9405
	2j 55	.2500	.22361	.795	-.4405	.9405
	4j 55	.2500	.22361	.795	-.4405	.9405
	6j 55	.0000	.22361	1.000	-.6905	.6905
1j 55	0j 55	-.2500	.22361	.795	-.9405	.4405
	2j 55	.0000	.22361	1.000	-.6905	.6905
	4j 55	.0000	.22361	1.000	-.6905	.6905
	6j 55	-.2500	.22361	.795	-.9405	.4405
2j 55	0j 55	-.2500	.22361	.795	-.9405	.4405
	1j 55	.0000	.22361	1.000	-.6905	.6905
	4j 55	.0000	.22361	1.000	-.6905	.6905
	6j 55	-.2500	.22361	.795	-.9405	.4405
4j 55	0j 55	-.2500	.22361	.795	-.9405	.4405
	1j 55	.0000	.22361	1.000	-.6905	.6905
	2j 55	.0000	.22361	1.000	-.6905	.6905
	6j 55	-.2500	.22361	.795	-.9405	.4405
6j 55	0j 55	.0000	.22361	1.000	-.6905	.6905
	1j 55	.2500	.22361	.795	-.4405	.9405
	2j 55	.2500	.22361	.795	-.4405	.9405
	4j 55	.2500	.22361	.795	-.4405	.9405



Homogeneous Subsets

Hinggap

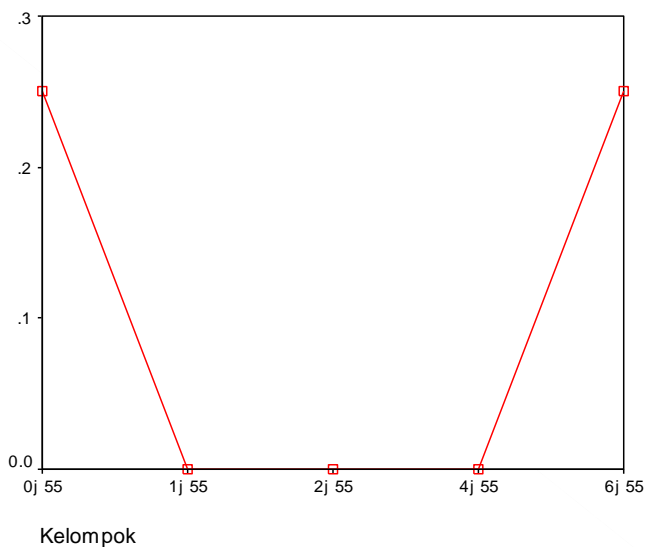
Tukey HSD^a

Kelompok	N	Subset for alpha = .05
		1
1j 55	4	.0000
2j 55	4	.0000
4j 55	4	.0000
0j 55	4	.2500
6j 55	4	.2500
Sig.		.795

Means for groups in homogeneous subsets are displayed.

a. Uses Harmonic Mean Sample Size = 4.000.

Means Plots



Oneway

Descriptives

Hinggap

	N	Mean	Std. Deviation	Std. Error	95% Confidence Interval for Mean		Minimum	Maximum
					Lower Bound	Upper Bound		
0j 60	4	-.0875	.26056	.13028	-.5021	.3271	-.35	.17
1j 60	4	.1125	.47654	.23827	-.6458	.8708	-.26	.81
2j 60	4	.1350	.31086	.15543	-.3596	.6296	-.11	.59
4j 60	4	-.1600	.50800	.25400	-.9683	.6483	-.72	.50
6j 60	4	.4725	1.08604	.54302	-1.2556	2.2006	-.40	2.01
Total	20	.0945	.58303	.13037	-.1784	.3674	-.72	2.01

Test of Homogeneity of Variances

Hinggap

Levene Statistic	df1	df2	Sig.
1.742	4	15	.193

ANOVA

Hinggap

	Sum of Squares	df	Mean Square	F	Sig.
Between Groups	.971	4	.243	.664	.627
Within Groups	5.488	15	.366		
Total	6.458	19			



Post Hoc Tests

Multiple Comparisons

Dependent Variable: Hinggap

Tukey HSD

(I) Kelompok	(J) Kelompok	Mean Difference (I-J)	Std. Error	Sig.	95% Confidence Interval	
					Lower Bound	Upper Bound
0j 60	1j 60	-.2000	.42769	.989	-1.5207	1.1207
	2j 60	-.2225	.42769	.984	-1.5432	1.0982
	4j 60	.0725	.42769	1.000	-1.2482	1.3932
	6j 60	-.5600	.42769	.690	-1.8807	.7607
1j 60	0j 60	.2000	.42769	.989	-1.1207	1.5207
	2j 60	-.0225	.42769	1.000	-1.3432	1.2982
	4j 60	.2725	.42769	.966	-1.0482	1.5932
	6j 60	-.3600	.42769	.913	-1.6807	.9607
2j 60	0j 60	.2225	.42769	.984	-1.0982	1.5432
	1j 60	.0225	.42769	1.000	-1.2982	1.3432
	4j 60	.2950	.42769	.956	-1.0257	1.6157
	6j 60	-.3375	.42769	.930	-1.6582	.9832
4j 60	0j 60	-.0725	.42769	1.000	-1.3932	1.2482
	1j 60	-.2725	.42769	.966	-1.5932	1.0482
	2j 60	-.2950	.42769	.956	-1.6157	1.0257
	6j 60	-.6325	.42769	.590	-1.9532	.6882
6j 60	0j 60	.5600	.42769	.690	-.7607	1.8807
	1j 60	.3600	.42769	.913	-.9607	1.6807
	2j 60	.3375	.42769	.930	-.9832	1.6582
	4j 60	.6325	.42769	.590	-.6882	1.9532



Homogeneous Subsets

Hinggap

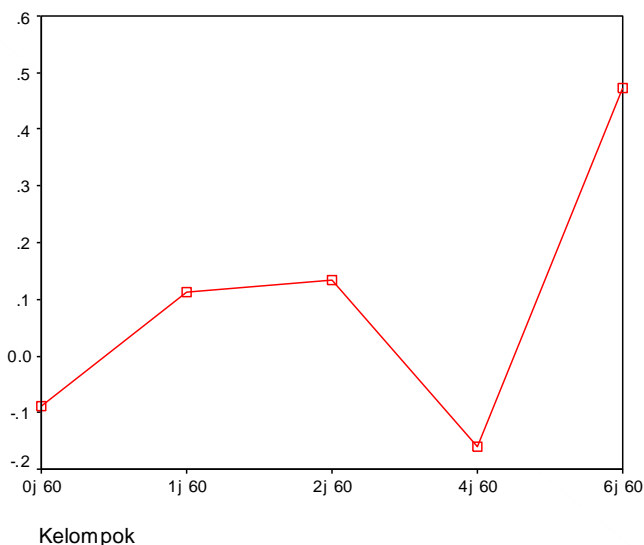
Tukey HSD^a

Kelompok	N	Subset for alpha = .05
		1
4j 60	4	-.1600
0j 60	4	-.0875
1j 60	4	.1125
2j 60	4	.1350
6j 60	4	.4725
Sig.		.590

Means for groups in homogeneous subsets are displayed.

a. Uses Harmonic Mean Sample Size = 4.000.

Means Plots



C. Uji Korelasi

Correlations

		Dekok	Nyamuk Nempel
Dekok	Pearson Correlation	1	-.991**
	Sig. (2-tailed)	.	.000
	N	16	16
Nyamuk Nempel	Pearson Correlation	-.991**	1
	Sig. (2-tailed)	.000	.
	N	16	16

** . Correlation is significant at the 0.01 level (2-tailed).

Lampiran 2. Tabel Hasil Pengamatan

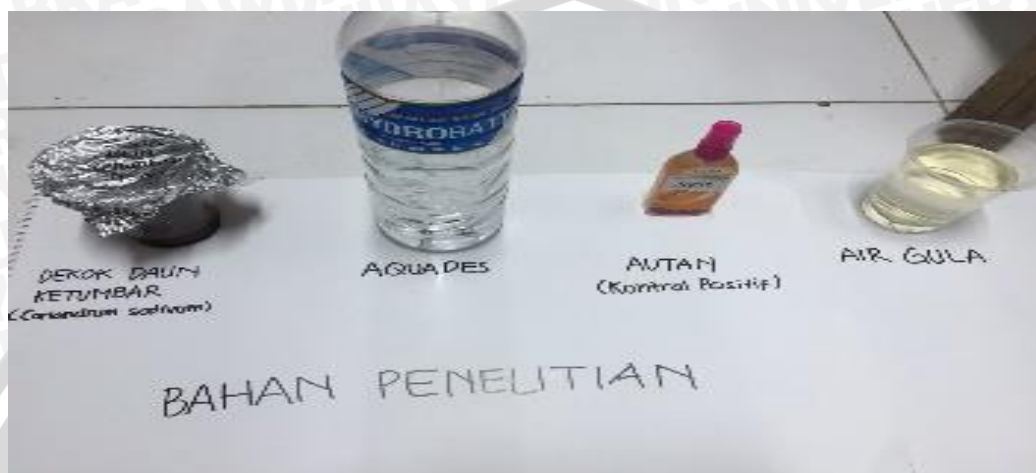
1. Tabel Jumlah Nyamuk yang Hinggap pada Penelitian Pendahuluan

Waktu (Jam ke-)	Kontrol negatif	Kontrol positif (DEET)	Konsentrasi 50%	Konsentrasi 60%	Konsentrasi 80%
0	11	-	1	1	-
1	8	-	4	-	-
2	14	-	-	-	-
4	10	-	-	-	-
6	8	-	2	-	-

2. Tabel Jumlah Nyamuk yang Hinggap pada Penelitian Sesungguhnya

Pengulangan	Waktu (Jam ke-)	KontrolNegatif	KontrolPositif	Dekok 50%	Dekok 55%	Dekok 60%
I	0	8	-	-	-	-
	1	8	-	2	-	1
	2	10	-	-	-	-
	4	11	-	-	-	-
	6	9	-	3	1	1
II	0	5	-	1	-	-
	1	6	-	-	-	-
	2	10	-	-	-	-
	4	13	-	2	-	-
	6	9	-	1	-	-
III	0	10	-	4	1	1
	1	7	-	1	-	-
	2	7	-	-	-	-
	4	11	-	-	-	-
	6	13	-	-	-	-
IV	0	10	-	1	-	-
	1	5	-	1	-	-
	2	8	-	-	-	-
	4	10	-	-	-	-
	6	7	-	-	-	-

Lampiran 3. Dokumentasi Penelitian



Gambar 1. Bahan Penelitian



Gambar 2. Alat Penelitian



Gambar 3. Kandang nyamuk



Gambar 4. Contoh Hinggapan Nyamuk

