

LAMPIRAN

Lampiran 1 : Data Pengukuran Kadar Trigliserida

Kadar Trigliserida (mg/dL)				
Sampel	K (-)	K(+)	P1(Insulin)	P2 (Air Kelapa)
1	53	297	70	116
2	262	165	39	61
3	103	187	48	55
4	76	171	58	61
5	140	132	50	73
6	127	174	99	73
<b>Rata-rata</b>	126,8	187,7	60,7	73,2
<b>Standar Deviasi</b>	73,5	56,6	21,5	22,2

Lampiran 2 : Uji Normalitas

Tests of Normality							
	Grup	Kolmogorov-Smirnov <sup>a</sup>			Shapiro-Wilk		
		Statistic	df	Sig.	Statistic	df	Sig.
TR_Hasil	kontrol negatif	,173	6	,200*	,985	6	,973
	kontrol positif	,291	6	,124	,867	6	,214
	insulin	,173	6	,200*	,961	6	,825
	air kelapa muda	,289	6	,129	,843	6	,138

\*. This is a lower bound of the true significance.

a. Lilliefors Significance Correction



**Lampiran 3 : Uji Homogenitas Varian**

**Test of Homogeneity of Variances**

Hasil

Levene Statistic	df1	df2	Sig.
1,541	3	20	,235

**Lampiran 4 : Uji One Way Analysis of Variance (ANOVA)**

**ANOVA**

Hasil

	Sum of Squares	df	Mean Square	F	Sig.
Between Groups	60531,500	3	20177,167	8,434	,001
Within Groups	47846,333	20	2392,317		
Total	108377,833	23			

## Lampiran 5 : Post Hoc Test

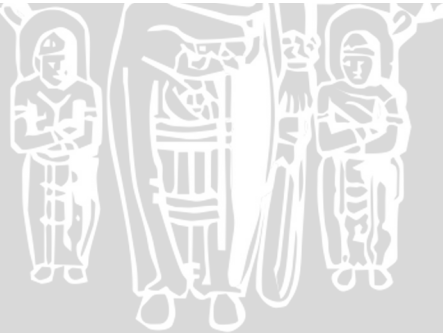
## Multiple Comparisons

Dependent Variable: Hasil

LSD

(I) Grup	(J) Grup	Mean Difference (I-J)	Std. Error	Sig.	95% Confidence Interval	
					Lower Bound	Upper Bound
kontrol negatif	kontrol positif	-60,833*	28,239	,044	-119,74	-1,93
	insulin	66,167*	28,239	,030	7,26	125,07
kontrol positif	air kelapa muda	53,667	28,239	,072	-5,24	112,57
	kontrol negatif	60,833*	28,239	,044	1,93	119,74
	insulin	127,000*	28,239	,000	68,09	185,91
insulin	air kelapa muda	114,500*	28,239	,001	55,59	173,41
	kontrol negatif	-66,167*	28,239	,030	-125,07	-7,26
	kontrol positif	-127,000*	28,239	,000	-185,91	-68,09
air kelapa muda	air kelapa muda	-12,500	28,239	,663	-71,41	46,41
	kontrol negatif	-53,667	28,239	,072	-112,57	5,24
	kontrol positif	-114,500*	28,239	,001	-173,41	-55,59
	insulin	12,500	28,239	,663	-46,41	71,41

\*. The mean difference is significant at the 0.05 level.



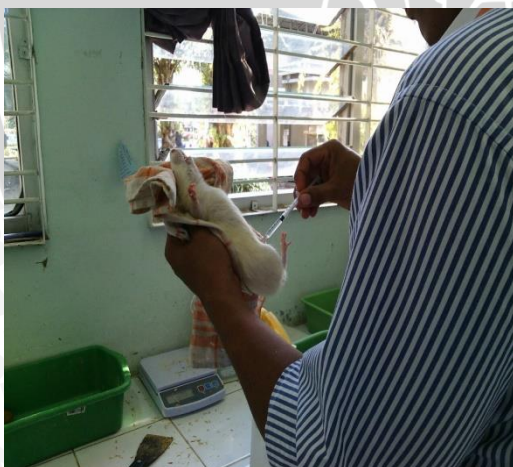
### Lampiran 6 : Dokumentasi Penelitian



Keadaan tikus dan kandang



Menyonde Air Kelapa muda



Injeksi Aloksan secara Intraperitoneal



Pembedahan Tikus



Pengambilan darah tikus



Meletakkan darah yang telah diambil pada vacutainer sesuai labelnya



Pemberian label pada tabung



Proses sentrifugasi