

LAMPIRAN 1  
UJI ASUMSI DATA

1. Uji Normalitas Data

Tests of Normality						
	Kolmogorov-Smirnov <sup>a</sup>			Shapiro-Wilk		
	Statistic	df	Sig.	Statistic	df	Sig.
stage nefritis	,218	20	,014	,898	20	,037

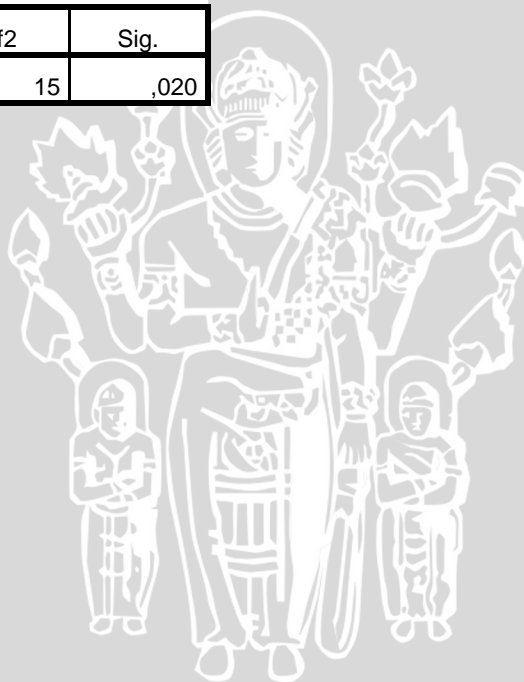
a. Lilliefors Significance Correction

2. Uji Homogenitas Data

Test of Homogeneity of Variances

stage nefritis

Levene Statistic	df1	df2	Sig.
4,085	4	15	,020



LAMPIRAN 2  
UJI NON PARAMETRIK

1. Uji Kruskal Wallis

Ranks		
perlakuan	N	Mean Rank
stage nefritis		
Kontrol Negatif	4	2,50
Ekstrak Ketela Rambat 175 mg/KgBB	4	6,75
Ekstrak Ketela Rambat 350 mg/KgBB	4	11,25
Ekstrak Ketela Rambat 700 mg/KgBB	4	13,50
Kontrol Positif	4	18,50
Total	20	

Test Statistics <sup>a,b</sup>	
	stage nefritis
Chi-Square	17,420
df	4
Asymp. Sig.	,002

a. Kruskal Wallis Test

b. Grouping Variable: perlakuan

2. Uji Mann Whitney

Ranks			
perlakuan	N	Mean Rank	Sum of Ranks
stage nefritis			
Kontrol Negatif	4	2,50	10,00
Ekstrak Ketela Rambat 175 mg/KgBB	4	6,50	26,00
Total	8		



Test Statistics<sup>a</sup>

	stage nefritis
Mann-Whitney U	,000
Wilcoxon W	10,000
Z	-2,352
Asymp. Sig. (2-tailed)	,019
Exact Sig. [2*(1-tailed Sig.)]	,029 <sup>b</sup>

- a. Grouping Variable: perlakuan  
 b. Not corrected for ties.

Ranks

perlakuan		N	Mean Rank	Sum of Ranks
stage nefritis	Kontrol Negatif	4	2,50	10,00
	Ekstrak Ketela Rambat 350 mg/KgBB	4	6,50	26,00
	Total	8		

Test Statistics<sup>a</sup>

	stage nefritis
Mann-Whitney U	,000
Wilcoxon W	10,000
Z	-2,337
Asymp. Sig. (2-tailed)	,019
Exact Sig. [2*(1-tailed Sig.)]	,029 <sup>b</sup>

- a. Grouping Variable: perlakuan  
 b. Not corrected for ties.

Ranks

perlakuan		N	Mean Rank	Sum of Ranks
stage nefritis	Kontrol Negatif	4	2,50	10,00
	Ekstrak Ketela Rambat 700 mg/KgBB	4	6,50	26,00
	Total	8		



**Test Statistics<sup>a</sup>**

	stage nefritis
Mann-Whitney U	,000
Wilcoxon W	10,000
Z	-2,352
Asymp. Sig. (2-tailed)	,019
Exact Sig. [2*(1-tailed Sig.)]	,029 <sup>b</sup>

a. Grouping Variable: perlakuan

b. Not corrected for ties.

**Ranks**

perlakuan	N	Mean Rank	Sum of Ranks
stage nefritis Kontrol Negatif	4	2,50	10,00
Kontrol Positif	4	6,50	26,00
Total	8		

**Test Statistics<sup>a</sup>**

	stage nefritis
Mann-Whitney U	,000
Wilcoxon W	10,000
Z	-2,337
Asymp. Sig. (2-tailed)	,019
Exact Sig. [2*(1-tailed Sig.)]	,029 <sup>b</sup>

a. Grouping Variable: perlakuan

b. Not corrected for ties.

**Ranks**

perlakuan	N	Mean Rank	Sum of Ranks
stage nefritis Ekstrak Ketela Rambat 175 mg/KgBB	4	2,75	11,00
Ekstrak Ketela Rambat 350 mg/KgBB	4	6,25	25,00
Total	8		





**Test Statistics<sup>a</sup>**

	stage nefritis
Mann-Whitney U	1,000
Wilcoxon W	11,000
Z	-2,033
Asymp. Sig. (2-tailed)	,042
Exact Sig. [2*(1-tailed Sig.)]	,057 <sup>b</sup>

a. Grouping Variable: perlakuan

b. Not corrected for ties.

**Ranks**

perlakuan	N	Mean Rank	Sum of Ranks
stage nefritis Ekstrak Ketela Rambat 175 mg/KgBB	4	2,50	10,00
Ekstrak Ketela Rambat 700 mg/KgBB	4	6,50	26,00
Total	8		

**Test Statistics<sup>a</sup>**

	stage nefritis
Mann-Whitney U	,000
Wilcoxon W	10,000
Z	-2,337
Asymp. Sig. (2-tailed)	,019
Exact Sig. [2*(1-tailed Sig.)]	,029 <sup>b</sup>

a. Grouping Variable: perlakuan

b. Not corrected for ties.

**Ranks**

perlakuan	N	Mean Rank	Sum of Ranks
stage nefritis Ekstrak Ketela Rambat 175 mg/KgBB	4	2,50	10,00
Kontrol Positif	4	6,50	26,00
Total	8		



**Test Statistics<sup>a</sup>**

	stage nefritis
Mann-Whitney U	,000
Wilcoxon W	10,000
Z	-2,323
Asymp. Sig. (2-tailed)	,020
Exact Sig. [2*(1-tailed Sig.)]	,029 <sup>b</sup>

a. Grouping Variable: perlakuan

b. Not corrected for ties.

**Ranks**

perlakuan	N	Mean Rank	Sum of Ranks
stage nefritis Ekstrak Ketela Rambat 350 mg/KgBB	4	3,50	14,00
Ekstrak Ketela Rambat 700 mg/KgBB	4	5,50	22,00
Total	8		

**Test Statistics<sup>a</sup>**

	stage nefritis
Mann-Whitney U	4,000
Wilcoxon W	14,000
Z	-1,183
Asymp. Sig. (2-tailed)	,237
Exact Sig. [2*(1-tailed Sig.)]	,343 <sup>b</sup>

a. Grouping Variable: perlakuan

b. Not corrected for ties.

**Ranks**

perlakuan	N	Mean Rank	Sum of Ranks
stage nefritis Ekstrak Ketela Rambat 350 mg/KgBB	4	2,50	10,00
Kontrol Positif	4	6,50	26,00
Total	8		



**Test Statistics<sup>a</sup>**

	stage nefritis
Mann-Whitney U	,000
Wilcoxon W	10,000
Z	-2,309
Asymp. Sig. (2-tailed)	,021
Exact Sig. [2*(1-tailed Sig.)]	,029 <sup>b</sup>

a. Grouping Variable: perlakuan

b. Not corrected for ties.

**Ranks**

perlakuan	N	Mean Rank	Sum of Ranks
stage nefritis Ekstrak Ketela Rambat 700 mg/KgBB	4	2,50	10,00
Kontrol Positif	4	6,50	26,00
Total	8		

**Test Statistics<sup>a</sup>**

	stage nefritis
Mann-Whitney U	,000
Wilcoxon W	10,000
Z	-2,323
Asymp. Sig. (2-tailed)	,020
Exact Sig. [2*(1-tailed Sig.)]	,029 <sup>b</sup>

a. Grouping Variable: perlakuan

b. Not corrected for ties.

LAMPIRAN 3  
HASIL URINALISIS

Data Hasil Urinalisis Sebelum Perlakuan :

A. Darah

Tabel Hasil Urinalisis Hematuria

	Negatif	Trace	+1	+2	+3	Total
K (-)	4	0	0	0	0	4
K (+)	3	0	0	0	1	4
D1	2	0	0	1	1	4
D2	3	0	1	0	0	4
D3	3	0	0	1	0	4
Total	15	0	1	2	2	20

B. Leukosituria

Tabel Hasil Urinalisis Leukosituria

	Negatif	Trace	+1	+2	+3	Total
K (-)	4	0	0	0	0	4
K (+)	0	0	3	0	1	4
D1	0	0	1	2	1	4
D2	0	0	3	1	0	4
D3	0	0	0	4	0	4
Total	4	0	7	7	2	20



Data Hasil Urinalisis Setelah Perlakuan :

A. Darah

Tabel Hasil Urinalisis Hematuria

	Negatif	Trace	+1	+2	+3	Total
K (-)	4	0	0	0	0	4
K (+)	3	0	0	0	1	4
D1	3	0	0	0	1	4
D2	3	0	1	0	0	4
D3	4	0	0	0	0	4
Total	17	0	1	0	2	20

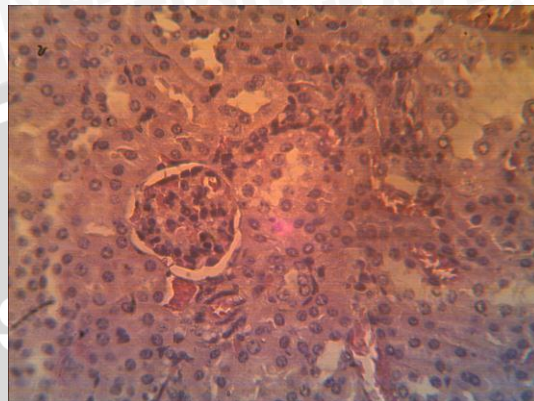
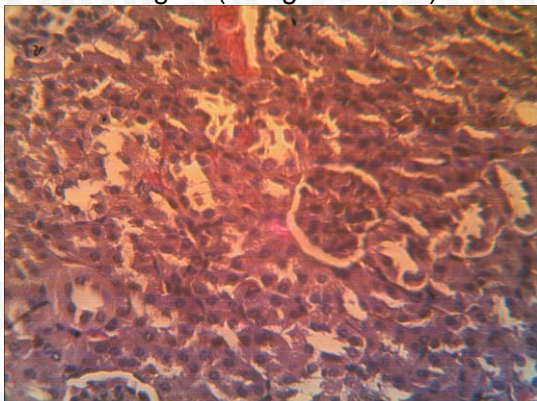
B. Leukosituria

Tabel Hasil Urinalisis Leukosituria

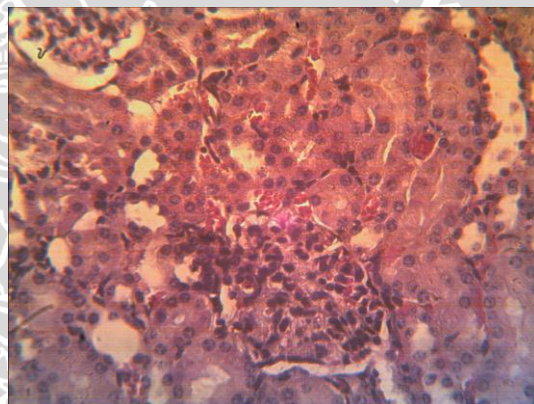
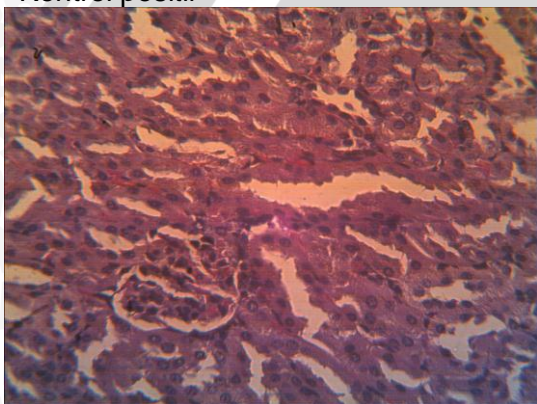
	Negatif	Trace	+1	+2	+3	Total
K (-)	4	0	0	0	0	4
K (+)	0	0	3	0	1	4
D1	1	2	0	0	1	4
D2	1	3	0	0	0	4
D3	2	2	0	0	0	4
Total	8	7	3	0	2	20

LAMPIRAN 4  
DOKUMENTASI PENELITIAN

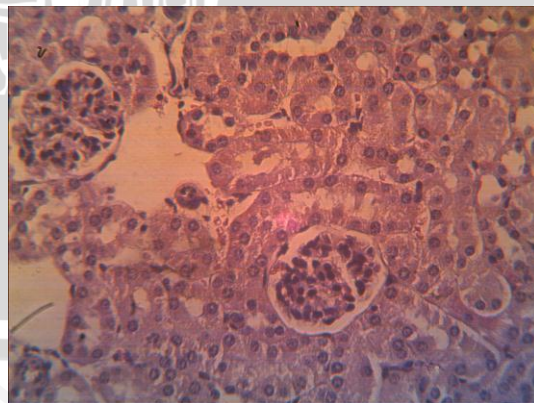
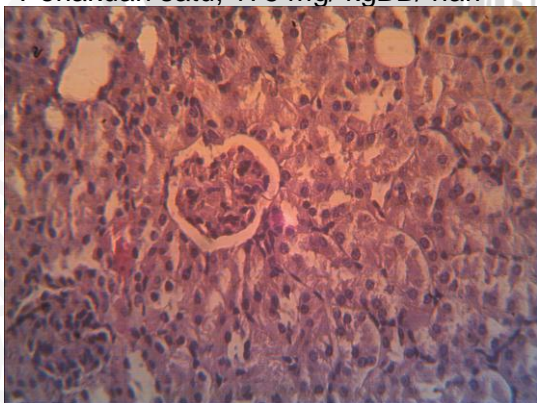
Kontrol negatif (kategori *normal*)



Kontrol positif

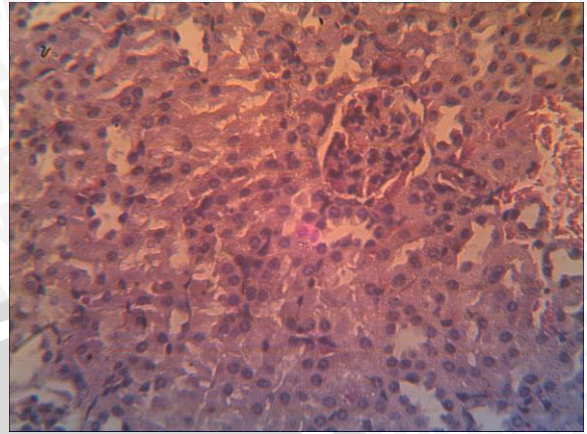
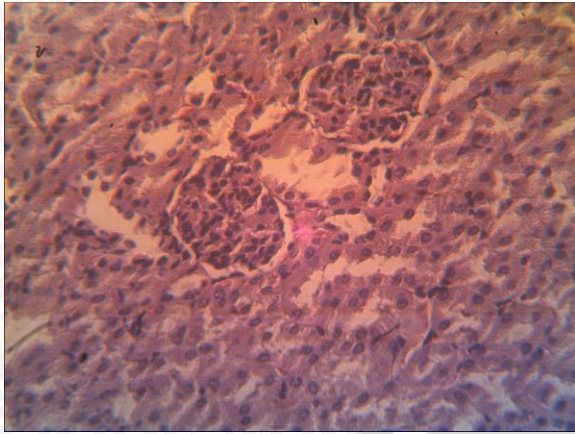


Perlakuan satu, 175 mg/ kgBB/ hari



Perlakuan dua, 350 mg/ kgBB/ hari





Perlakuan tiga. 700 mg/ kgBB/ hari

