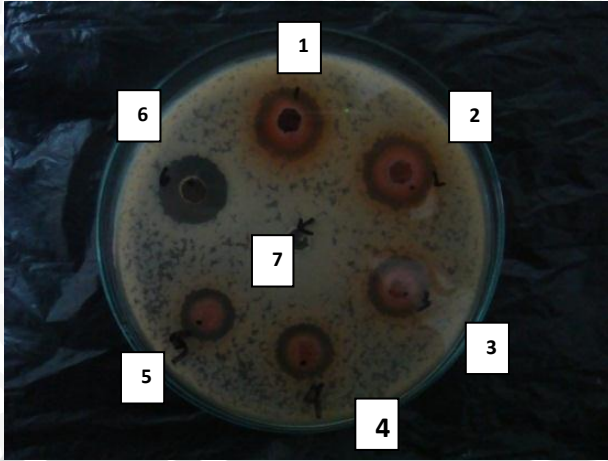


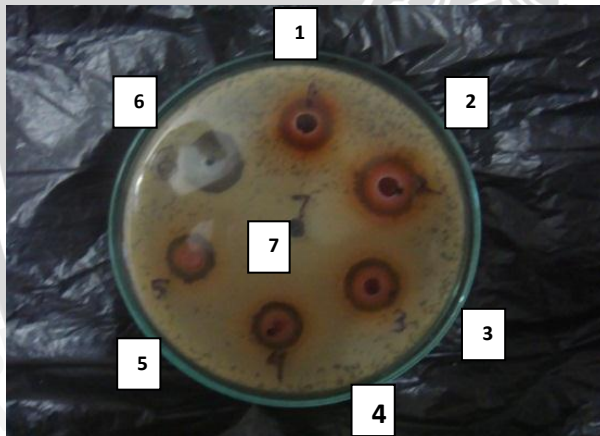
## Lampiran 1 Agar Well Diffusion



Keterangan :

1. Ekstrak buah pinang 50%
2. Ekstrak buah pinang 25%
3. Ekstrak buah pinang 12.5%
4. Ekstrak buah pinang 6.25%
5. Ekstrak buah pinang 3.125%
6. *Chlorhexidine gluconate* 0.2%
7. *Aquades*

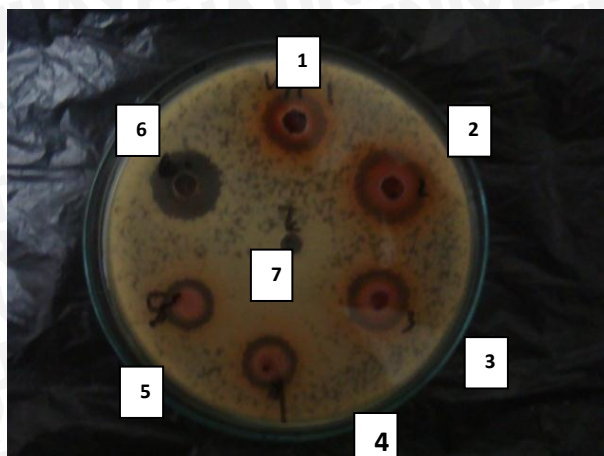
Agar well Diffusion pengulangan I



Keterangan :

1. Ekstrak buah pinang 50%
2. Ekstrak buah pinang 25%
3. Ekstrak buah pinang 12.5%
4. Ekstrak buah pinang 6.25%
5. Ekstrak buah pinang 3.125%
6. *Chlorhexidine gluconate* 0.2%
7. *Aquades*

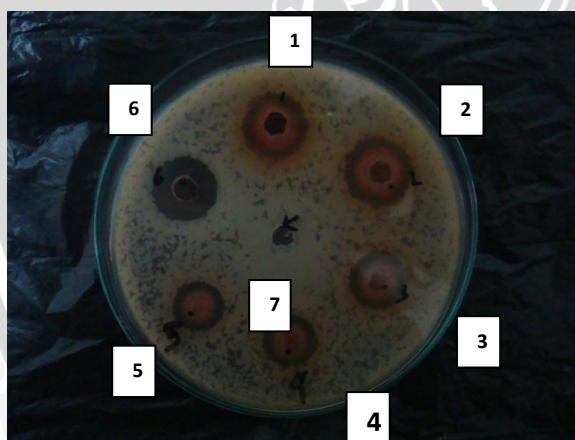
Agar well Diffusion pengulangan II



Keterangan :

1. Ekstrak buah pinang 50%
2. Ekstrak buah pinang 25%
3. Ekstrak buah pinang 12.5%
4. Ekstrak buah pinang 6.25%
5. Ekstrak buah pinang 3.125%
6. *Chlorhexidine gluconate* 0.2%
7. *Aquades*

Agar well Diffusion pengulangan III



Keterangan :

1. Ekstrak buah pinang 50%
2. Ekstrak buah pinang 25%
3. Ekstrak buah pinang 12.5%
4. Ekstrak buah pinang 6.25%
5. Ekstrak buah pinang 3.125%
6. *Chlorhexidine gluconate* 0.2%
7. *Aquades*

Agar well Diffusion pengulangan IV



Lampiran 2 Ekstraksi Buah Pinang (*Areca catechu* Linn)



Buah Pinang (*Areca catechu* Linn)



Oven Buah Pinang

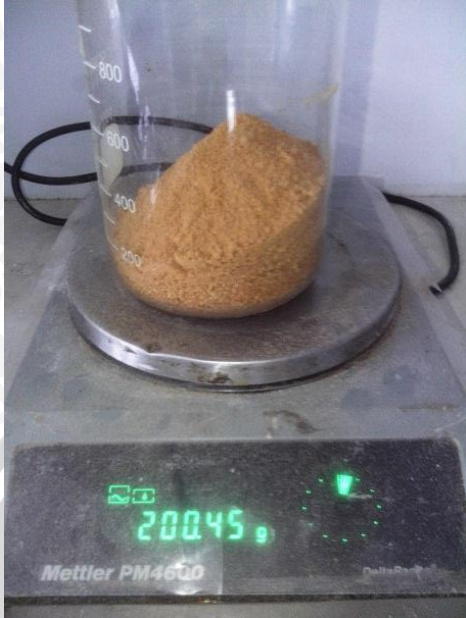


Buah Pinang Kering



Blender Buah Pinang





**Timbang Buah Pinang**



**Maserasi Buah Pinang**



**Saring Buah Pinang**



**Saringan Buah Pinang**



Lampiran 3 Identifikasi Buah Pinang (*Areca catechu* Linn)



LABORATORIUM TAKSONOMI, STRUKTUR DAN  
PERKEMBANGAN TUMBUHAN  
JURUSAN BIOLOGI, FAKULTAS MIPA  
UNIVERSITAS BRAWIJAYA  
JALAN VETERAN, MALANG 65145  
Telepon/faks: 0341-575841

KETERANGAN IDENTIFIKASI

No. 0116/Takso.Identifikasi/03/2013

Kepala Laboratorium Taksonomi, Struktur dan Perkembangan Tumbuhan, Jurusan Biologi, Fakultas MIPA, Universitas Brawijaya, menerangkan bahwa spesimen yang dibawa oleh:

Nama : Lisa Budiarsih (NIM. 105070401111022)

Instansi : Fakultas Kedokteran, Universitas Brawijaya

Berdasarkan deskripsi karakter dan kunci identifikasi pada Flora of Java (Backer dan Van den Brink, 1968), volume III, halaman 194, diidentifikasi sebagai:

**Familia** : *Arecaceae*  
**Genus** : *Areca*  
**Species** : *Areca catechu* L.

Demikian surat keterangan identifikasi ini dibuat untuk digunakan seperlunya

Malang, 17 Oktober 2013

Kepala Laboratorium  
Taksonomi, Struktur dan  
Perkembangan Tumbuhan,

Dr. Serafinah Indriyani, M.Si.  
LABORATORIUM TAKSONOMI PERKEMBANGAN TUMBUHAN 198802 2 001



## Lampiran 4 Tes Deskriptif Rata-rata Perlakuan

### Descriptives

Diameter ZH	N	Mean	Std. Deviation	Std. Error	95% Confidence Interval for Mean		Minimum	Maximum
					Lower Bound	Upper Bound		
					50	4		
25	4	13.975	.8921	.4460	12.555	15.395	12.9	15.0
12.5	4	13.538	.7353	.3676	12.368	14.707	12.5	14.2
6.25	4	12.625	.3862	.1931	12.010	13.240	12.3	13.1
3.125	4	11.950	.2739	.1369	11.514	12.386	11.8	12.4
Chlorhexidinegluconate 0.2%	4	15.212	.3276	.1638	14.691	15.734	14.8	15.6
Total	24	13.577	1.1872	.2423	13.076	14.078	11.8	15.6

## Lampiran 5 Uji Normalitas

### One-Sample Kolmogorov-Smirnov Test

	Konsentrasi	Diameter ZH
N	24	24
Normal Parameters <sup>a,b</sup>	Mean	16.15
	Std. Deviation	17.525
Most Extreme Differences	Absolute	.249
	Positive	.249
	Negative	-.178
Kolmogorov-Smirnov Z	1.220	.537
Asymp. Sig. (2-tailed)	.102	.936

a. Test distribution is Normal.

b. Calculated from data.

## Lampiran 6 Uji Homogenitas Data

### Test of Homogeneity of Variances

Diameter ZH

Levene Statistic	df 1	df 2	Sig.
1.708	5	18	.184

### Homogeneous Subsets

Diameter ZH

Tukey HSD<sup>a</sup>

Kelompok	N	Subset for alpha = .05			
		1	2	3	4
3.125	4	11.950			
6.25	4	12.625	12.625		
12.5	4		13.538	13.538	
25	4			13.975	13.975
50	4			14.163	14.163
Chlorhexidinegluconate 0.2%	4				15.212
Sig.		.532	.230	.609	.051

Means for groups in homogeneous subsets are displayed.

a. Uses Harmonic Mean Sample Size = 4.000.

## Lampiran 7 Uji One Way ANOVA

### ANOVA

Diameter ZH

	Sum of Squares	df	Mean Square	F	Sig.
Between Groups	26.924	5	5.385	17.653	.000
Within Groups	5.491	18	.305		
Total	32.415	23			

## Lampiran 8 Uji Post Hoc Tests

### Multiple Comparisons

Dependent Variable: Diameter ZH

Tukey HSD

(I) Kelompok	(J) Kelompok	Mean Difference (I-J)	Std. Error	Sig.	95% Confidence Interval	
					Lower Bound	Upper Bound
50	25	.1875	.3905	.996	-1.054	1.429
	12.5	.6250	.3905	.609	-.616	1.866
	6.25	1.5375*	.3905	.011	.296	2.779
	3.125	2.2125*	.3905	.000	.971	3.454
	Chlorhexidinegluconate 0.2%	-1.0500	.3905	.126	-2.291	.191
25	50	-.1875	.3905	.996	-1.429	1.054
	12.5	.4375	.3905	.867	-.804	1.679
	6.25	1.3500*	.3905	.029	.109	2.591
	3.125	2.0250*	.3905	.001	.784	3.266
	Chlorhexidinegluconate 0.2%	-1.2375	.3905	.051	-2.479	.004
12.5	50	-.6250	.3905	.609	-1.866	.616
	25	-.4375	.3905	.867	-1.679	.804
	6.25	.9125	.3905	.230	-.329	2.154
	3.125	1.5875*	.3905	.008	.346	2.829
	Chlorhexidinegluconate 0.2%	-1.6750*	.3905	.005	-2.916	-.434
6.25	50	-1.5375*	.3905	.011	-2.779	-.296
	25	-1.3500*	.3905	.029	-2.591	-.109
	12.5	-.9125	.3905	.230	-2.154	.329
	3.125	.6750	.3905	.532	-.566	1.916
	Chlorhexidinegluconate 0.2%	-2.5875*	.3905	.000	-3.829	-1.346
3.125	50	-2.2125*	.3905	.000	-3.454	-.971
	25	-2.0250*	.3905	.001	-3.266	-.784
	12.5	-1.5875*	.3905	.008	-2.829	-.346
	6.25	-.6750	.3905	.532	-1.916	.566
	Chlorhexidinegluconate 0.2%	-3.2625*	.3905	.000	-4.504	-2.021
Chlorhexidinegluconate 0.2%	50	1.0500	.3905	.126	-.191	2.291
	25	1.2375	.3905	.051	-.004	2.479
	12.5	1.6750*	.3905	.005	.434	2.916
	6.25	2.5875*	.3905	.000	1.346	3.829
	3.125	3.2625*	.3905	.000	2.021	4.504

\*. The mean difference is significant at the .05 level.



## Lampiran 9 Uji Correlations

### Correlations

		Konsentrasi	Diameter ZH
Konsentrasi	Pearson Correlation	1	.710**
	Sig. (2-tailed)	.	.000
	N	20	20
Diameter ZH	Pearson Correlation	.710**	1
	Sig. (2-tailed)	.000	.
	N	20	20

\*\* . Correlation is significant at the 0.01 level (2-tailed).

## Lampiran 10 Uji Regression

### Model Summary

Model	R	R Square	Adjusted R Square	Std. Error of the Estimate
1	.710 <sup>a</sup>	.504	.476	.728

a. Predictors: (Constant), Konsentrasi

### ANOVA<sup>b</sup>

Model		Sum of Squares	df	Mean Square	F	Sig.
1	Regression	9.704	1	9.704	18.289	.000 <sup>a</sup>
	Residual	9.551	18	.531		
	Total	19.255	19			

a. Predictors: (Constant), Konsentrasi

b. Dependent Variable: Diameter ZH

**Coefficients<sup>a</sup>**

Model		Unstandardized Coefficients		Standardized Coefficients	t	Sig.
		B	Std. Error	Beta		
1	(Constant)	12.458	.247		50.526	.000
	Konsentrasi	.041	.010	.710	4.277	.000

a. Dependent Variable: Diameter ZH

**Means Plots**

