

LAMPIRAN

Lampiran 1 Data hasil perhitungan laju keausan

| Spesimen | Berat awal (gram) | Berat akhir (gram) | Perubahan berat (gram) | perubahan volume (cm ³) | perubahan volume (mm ³) | Laju keausan (mm ³ /Nm) |
|----------|-------------------|--------------------|------------------------|-------------------------------------|-------------------------------------|------------------------------------|
| 1 | 34,925 | 34,83 | 0,095 | 0,035 | 35,408 | 0,0025 |
| 2 | 37,055 | 36,965 | 0,09 | 0,032 | 32,166 | 0,0023 |
| 3 | 40,87 | 40,785 | 0,085 | 0,029 | 29,179 | 0,0021 |
| 4 | 39,695 | 39,625 | 0,07 | 0,023 | 23,117 | 0,0017 |

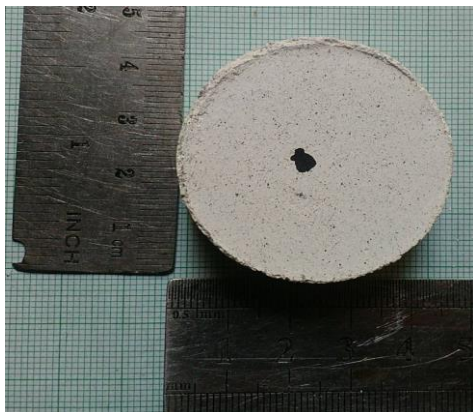
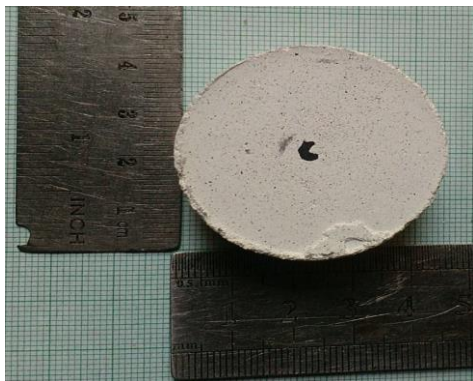
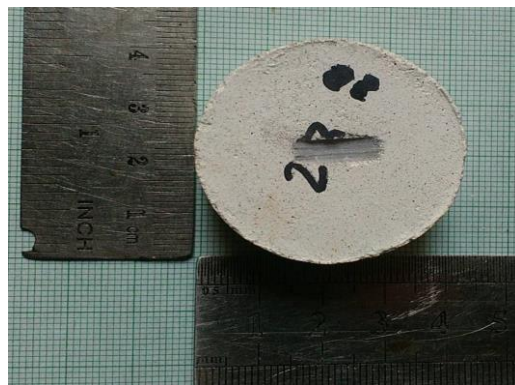
Lampiran 2 Data hasil perhitungan susut bakar

| spesimen | Tinggi sebelum bakar (cm) | Tinggi sesudah bakar (cm) | Diameter sebelum bakar (cm) | Diameter sesudah bakar (cm) | Susut sebelum bakar (cm ³) | Susut sesudah bakar (cm ³) | Susut bakar (%) |
|----------|---------------------------|---------------------------|-----------------------------|-----------------------------|--|--|-----------------|
| 1 | 1,68 | 1,635 | 3,97 | 3,93 | 20,94 | 20,18 | 3,66 |
| 2 | 1,935 | 1,89 | 3,95 | 3,93 | 23,99 | 23,32 | 2,82 |
| 3 | 1,735 | 1,71 | 3,96 | 3,94 | 21,57 | 21,15 | 1,94 |
| 4 | 1,865 | 1,84 | 3,97 | 3,96 | 23,25 | 22,87 | 1,59 |

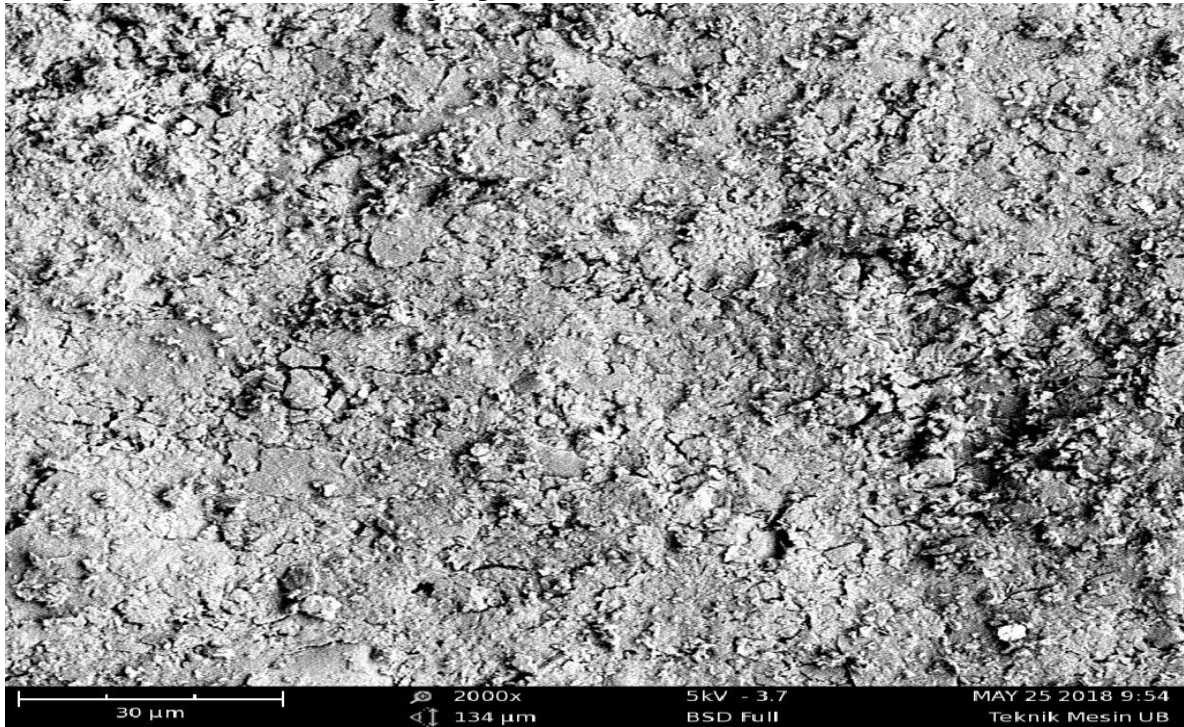
Lampiran 3 Hasil foto jejak keausan lelah pada setiap spesimen

Spesimen sebelum uji keausan

Spesimen sesudah uji keausan



Lampiran 4 Hasil foto SEM dengan perbesaran 3000x



Lampiran 5 Hasil gigi tiruan dari keramik

