

**GRU'S PERSONALITY PORTRAYED IN *DESPICABLE ME***

**UNDERGRADUATE THESIS**

**BY**

**YOGA SURYA PRAYOGO**

**NIM 105110100111077**

**UNIVERSITAS BRAWIJAYA**

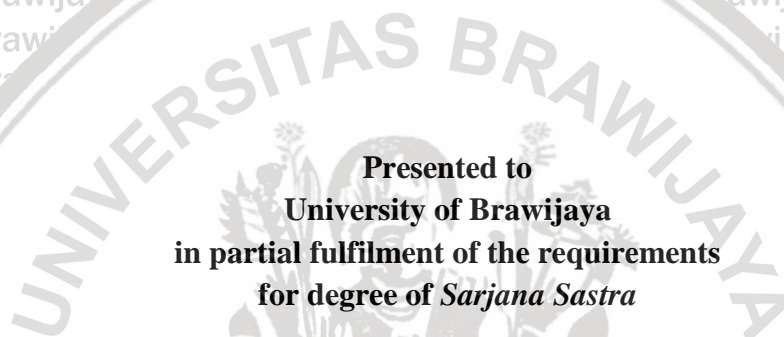


**STUDY PROGRAM OF ENGLISH  
DEPARTMENT OF LANGUAGES AND LITERATURE  
FACULTY OF CULTURAL STUDIES  
UNIVERSITAS BRAWIJAYA**

**2015**

**GRU'S PERSONALITY PORTRAYED IN *DESPICABLE ME***

**UNDERGRADUATE THESIS**



**Presented to  
University of Brawijaya  
in partial fulfilment of the requirements  
for degree of *Sarjana Sastra***

**BY  
YOGA SURYA PRAYOGO  
NIM 105110100111077**

**STUDY PROGRAM OF ENGLISH  
DEPARTMENT OF LANGUAGES AND LITERATURE  
FACULTY OF CULTURAL STUDIES  
UNIVERSITAS BRAWIJAYA**

**2015**

## DECLARATION OF AUTHORSHIP

Herewith I,

Name : Yoga Surya Prayogo

NIM : 105110100111077

Address : Perumahan Dinas BLKI Singosari no. 21

declare that

1. This thesis is the sole work of mine and has not been written in collaboration with any other person, nor does it include, without due acknowledgement, the work of any other person.
2. If at a later time it is found that this thesis is a product of plagiarism, I am willing to accept any legal consequences that may be imposed upon me.

Malang, 26 August 2015

Yoga Surya Prayogo  
NIM 105110100111077



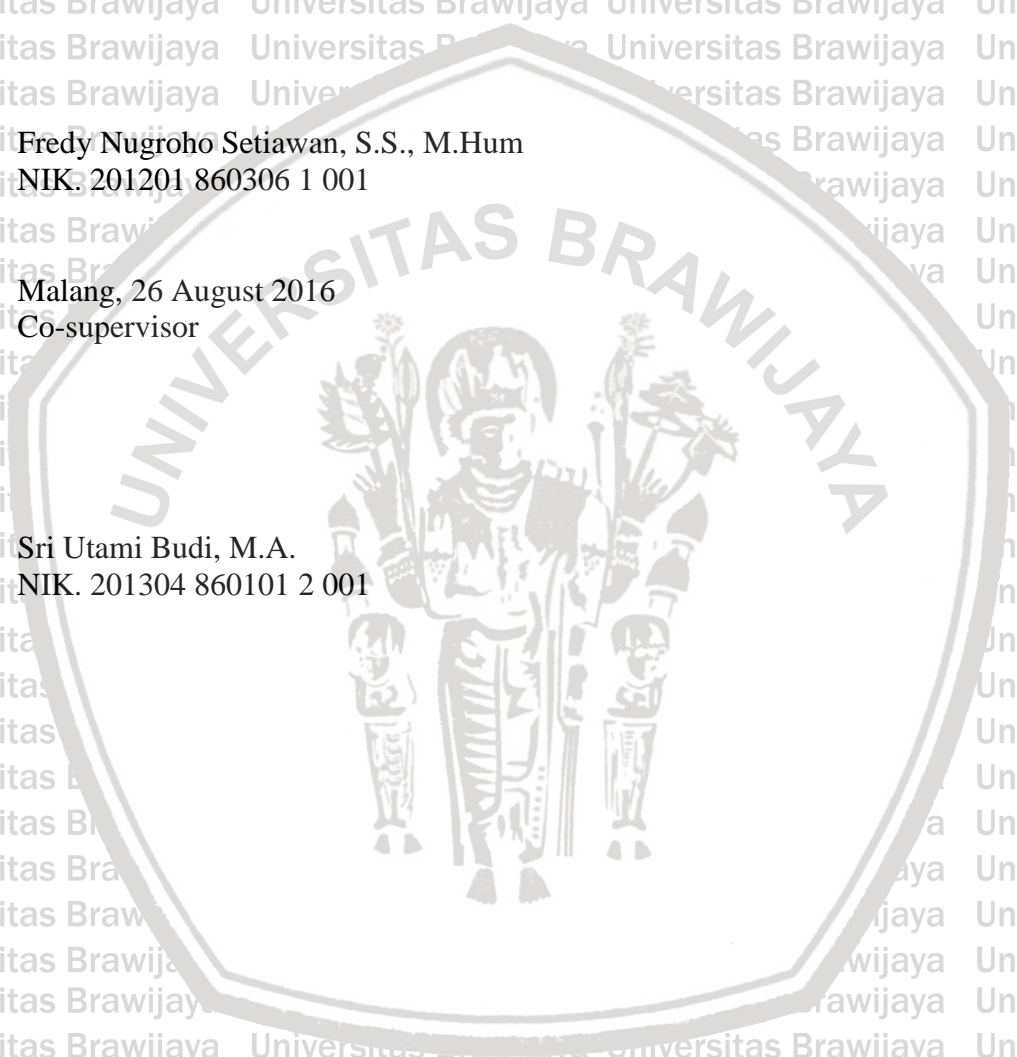
This is to certify that the *Sarjana skripsi* of **Yoga Surya Prayogo** has been approved by the Board of Supervisors

Malang, 26 August 2015  
Supervisor

Fredy Nugroho Setiawan, S.S., M.Hum  
NIK. 201201 860306 1 001

Malang, 26 August 2016  
Co-supervisor

Sri Utami Budi, M.A.  
NIK. 201304 860101 2 001



This is to certify that the *Sarjana* thesis of **Yoga Surya Prayogo** has been approved  
by the Board of Examiners as one of the requirements for the degree of *Sarjana*  
*Sastra*

Dyah Eko Hapsari, M.Hum, Chair  
NIP. 19780727 200501 2 001

Fredy Nugroho Setiawan, S.S., M.Hum, Member  
NIK. 201201 860306 1 001

Sri Utami Budi, M.A, Member  
NIK. 201304 860101 2 001

Acknowledged by,  
Head of Study Program of English

Sighted by,  
Head of Department of Languages and  
Literature

Yusri Fajar, M.A  
NIP. 19770517 200312 1 001

Ismatul Khasanah, M.Ed., Ph.D  
NIP. 19750518 200501 2 001





## ACKNOWLEDGEMENTS

Foremost, I would like to give special gratitude toward my Lord, Allah SWT, for his permission to finally finish my work for over five years in undergraduate study. Thank you for always beside me and give me abilities to do this work.

Secondly, I would like to give deepest gratitude toward my family whom patiently wait for me to be able to finish this work. Thanks to my sisters, father and mother who always give me courage until now. I hope this work would make them proud.

I would like to state my gratefulness for my boards of supervisor and examiner. Thank you for my supervisor and co-supervisor, Fredy Nugroho S.S., M. Hum and Sri Utami Budi, M.A for their patience in guiding me to create a wonderful thesis. Also, thank you for my extraordinary examiner Dyah Eko Hapsari, M. Hum for always giving me opinion related to my work.

Last but not least, thank you for a few number of my friend who always be on my side. Thanks to Risky Amalia who patiently teaches me and give me encouragement to finish this thesis. Mahzumi Ahmad Hanida who always accompanies me as a best friend for all of my study in this university. Thanks Ahmad Tok, Fauzy Achmad Setiawan, and all of my friend whom I cannot mention one by one for always be on my side.

## ABSTRACT

Prayogo, Yoga S. 2015. **Gru's Personality Portrayed in Despicable Me**. Study Program of English, Department of Languages and Literatures, Faculty of Cultural Studies, Universitas Brawijaya.

Supervisor: Fredy Nugroho ; Co-supervisor; Sri Utami Budi

Keywords: movie, main character, Gru's personality

Movie cannot be separated from literature because of their common relation.

One of the important elements in a movie, which is also an interesting object to be studied in literature, is the character; one of the intrinsic elements in a story. Movies provide not only a plot, but also a character which may come in the form of animation. Animation based movies contain characters in form of animation as representation of real human. *Despicable Me* is one of the most famous animation movies based on a story of a villain who becomes the main character namely Gru. Gru takes very crucial part in the movie will be the main focus of this research. His important role in the movie is what makes the story very amusing and entertaining. In the movie, Gru's personality is revealed as the story progress.

To study this movie, Representation of Gru by all his actions, dialogues, expressions, and all other interactions supported by movies studies to apply a personality theory in this study. There are a lot of theories about the movie study such as *mise en scene*, framing, text, and character. In this research, the researcher will focus on the framing, and text. The script or text will be the main element to be analysed while framing will be used to show certain scenes reflecting the main issue of this research and its meaning. Then, the researcher will apply personality theory by Carl Gustav Jung. Jung distinguishes two general personality attitude; introversion, and extraversion. The two general personality attitudes are categorized into four function; thought, feeling, sense, and intuition. By using two general attitudes and four functions, researcher analyses the main character of *Despicable Me*.

The researcher concludes Gru personality as portrayed in *Despicable Me* as introvert. This conclusion is drawn based on the analysis using Jungian personality type theory. It is proven by using more detailed category of personality namely four function proposed by Jung. The researcher finds out that Gru has introverted thinking, introverted feeling, and introverted sensing on his personality.



## ABSTRAK

Prayogo, Yoga S. 2015. **Kepribadian Gru yang tergambar dalam film *Despicable Me***. Program Studi Sastra Inggris, Jurusan Bahasa dan Sastra, Universitas Brawijaya. Pembimbing (I) Fredy Nugroho; (II) Sri Utami Budi

Kata Kunci : Film, tokoh utama, kepribadian Gru

Film tidak dapat terpisahkan dari sastra dikarenakan ada keterkaitan. Salah satu elemen penting dalam film dan merupakan obyek yang menarik untuk dipelajari dalam karya sastra, yakni tokoh ; salah satu unsur intrinsik dalam cerita. Film tidak hanya menyuguhkan jalan cerita, tetapi juga tokoh yang muncul dalam bentuk animasi. Film animasi juga mempunyai tokoh animasi sebagai representasi dari manusia dalam dunia nyata. *Despicable Me* adalah salah satu contoh dari film animasi terkenal berdasar pada cerita tokoh utamanya sebagai seorang penjahat bernama Gru. Gru mempunyai bagian yang penting dalam film yang akan menjadi fokus utama dalam penelitian ini. Peran pentingnya dalam film membuat jalan cerita dari film ini sangat menarik dan menghibur. Dalam film ini, kepribadian Gru akan terungkap selama cerita berlangsung.

Untuk mempelajari film ini, representasi dari Gru dengan aksinya, dialognya, ekspresinya, dan interaksi lainnya didukung dengan studi film untuk menerapkan teori kepribadian dalam penelitian ini. Berbagai macam teori dalam studi film seperti *mise-en scene*, *framing*, teks, dan karakter. Dalam penelitian ini, peneliti akan berfokus pada penggunaan teori *framing*, dan teks. Skrip atau teks akan menjadi obyek utama untuk dianalisis dan juga *framing* akan digunakan untuk menunjukkan adegan-adegan tertentu yang mencerminkan makna dan isu utama dalam penelitian ini. Kemudian, peneliti akan menerapkan teori kepribadian oleh Carl Gustav Jung. Jung membagi dua macam kepribadian; introversi dan ekstroversi. Kedua kepribadian tersebut akan dikelompokkan dalam 4 fungsi yaitu; pikiran, perasaan, indra, dan intuisi. Dengan menggunakan dua kepribadian dan empat fungsi, peneliti dapat menganalisis karakter utama dari film *Despicable Me*.

Peneliti menyimpulkan kepribadian Gru seperti yang digambarkan dalam *Despicable Me* sebagai seorang introvert. Kesimpulan ini ditarik berdasarkan analisis menggunakan teori tipe kepribadian Jung. Hal ini dibuktikan dengan menggunakan kategori yang lebih rinci dari kepribadian yaitu empat fungsi yang diusulkan oleh Jung. Peneliti menyimpulkan bahwa Gru mempunyai pemikiran introvert, perasaan introvert, dan penginderaan introvert pada kepribadiannya.



**TABLE OF CONTENTS**

<b>PAGE TITLE .....</b>	<b>i</b>
<b>DECLARATION OF AUTHORSHIP .....</b>	<b>v</b>
<b>SUPERVISORS' APPROVAL.....</b>	<b>iii</b>
<b>BOARD OF EXAMINERS' CERTIFICATE OF APPROVAL.....</b>	<b>iv</b>
<b>ACKNOWLEDGEMENTS.....</b>	<b>v</b>
<b>ABSTRACT .....</b>	<b>vi</b>
<b>ABSTRAK.....</b>	<b>vii</b>
<b>TABLE OF CONTENTS.....</b>	<b>viii</b>
<b>LIST OF FIGURES .....</b>	<b>x</b>
<b>LIST OF APPENDICE.....</b>	<b>xi</b>
<b>CHAPTER I INTRODUCTION.....</b>	<b>1</b>
1.1 Background of the study.....	1
1.2 Problem of the study.....	4
1.3 Objective of the study.....	4
<b>CHAPTER II REVIEW OF RELATED LITERATURE AND RESEARCH METHODS.....</b>	<b>5</b>
2.1 Theoretical Framework.....	5
2.1.1 Movie and Literature .....	5
2.1.2 Character .....	6
2.1.3 Movie Studies .....	7
2.1.4 Jungian Psychoanalysis .....	9
2.1.5 Synopsis .....	13
2.2 Previous Studies .....	14
2.3 Research Method .....	16
2.3.1 Deciding the Material and the Formal Object.....	16
2.3.2 Collecting the Data Based on Four Function of Jungian Psychoanalysis .....	17
2.3.3 Drawing Conclusion from the Data Analysed .....	17
<b>CHAPTER III FINDING AND DISCUSSION.....</b>	<b>18</b>
3.1 Gru's Thought.....	18
3.2 Gru's Feeling.....	18
3.3 Gru's Sense.....	41

	3.4 Gru's Intuition.....	47
<b>CHAPTER IV</b>	<b>CONCLUSION.....</b>	<b>49</b>
	4.1 Conclusion.....	49
	4.2 Suggestion.....	50
<b>REFERENCES.....</b>		<b>51</b>
<b>APPENDICES.....</b>		<b>52</b>





## LIST OF FIGURES

### Gru's Thought

Figure 3.1.1 Gru uses his shrink ray to the people in the coffee shop .....	19
Figure 3.1.2 Gru stands in the platform by moon background .....	21
Figure 3.1.3 Gru receives phone call from his mom regarding a news about stolen pyramid.....	23
Figure 3.1.4 Gru is having conversation with Mr. Perkins.....	24
Figure 3.1.5 Gru imagines the girls stealing the shrink ray .....	26
Figure 3.1.6 Gru is explaining his plan stealing of the moon to Mr. Perkins.....	28
Figure 3.1.7 Gru is holding the moon in his hand.....	29

### Gru's Feeling

Figure 3.2.1 Gru is talking to the girls behind his door .....	31
Figure 3.2.2 Gru meets Vector in the bank of evil.....	32
Figure 3.2.3 Gru distracted by three little girls who enter his underground secret lab.....	34
Figure 3.2.4 Gru shows his blissful face after receiving praises from the little girls.....	35
Figure 3.2.5 Gru looks happy seeing girls drawing on the wall .....	37
Figure 3.2.6 Gru tries to save the little girls from Vector plane .....	38
Figure 3.2.7 Gru dances in the stage .....	40

### Gru's Sense

Figure 3.3.1 Gru drives his enormous car toward his home .....	42
Figure 3.3.2 Gru's inside house full of peculiar and scary looking furniture .....	43
Figure 3.3.3 Gru provides little girls need .....	45
Figure 3.3.4 Gru serves pancakes for the little girls .....	46

LIST OF APPENDICE

Appendix 1 *Berita Acara Bimbingan Skripsi*.....

52





## CHAPTER I

### INTRODUCTION

#### 1.1 Background of the study

Movie cannot be separated from literature and they always have common relation. One of the important elements in a movie, which is also an interesting object to be studied in literature, is the character; one of the intrinsic elements in a story. *Despicable Me*, as a movie which is taken as object of this research, offers the viewers with memorable characters through unique personality and most likely every literary object such as drama, fiction, and prose have it. As Klarer (2004, p.56-57) stated that:

In spite of their differing forms and media, drama and movie are often categorized under the heading performing arts because they use actors as their major expression. The visualization of the action is not merely to the imagination of a reader, but rather comes to life in the performance, independent of the audience. In both genres, a performance (in the sense of visual representation by people) stands at the centre of the attention.

From the citation above, drama and movie are literary works which are centred on their performance. Therefore, drama and movie characters such as protagonist, antagonist, main character and supporting character can be seen directly and thoroughly by the audience through scenes and performance. Unlike prose and poetry which rely heavily on text, the actors or character on this type of literary works can only be imagined through the dialogue between actors or even from the author description through the text. Therefore, characters in a movie can be observed directly as the plot of the story progress. "Aspect of plot such as

foreshadowing, and flashback, or interwoven levels of action and time are the instances of how the character described through storyline” (cited in Klarer, 2004, p.63). Thus, movies provide not only a plot, but also a character which can appear in the form of animation. The word animation comes from the Latin word *anima*, which means life (Louise, Megan, & Abby, 2011). The verb form *animare*, refers to the act of making something alive. Related to the previous point, animation based movies contain characters in form of a representation of real human. There are many animated movies such as *Wreck It Ralph*, *Despicable Me*, *Despicable Me 2*, *How to Train Your Dragon*, and so on. For particular reason, the researcher chooses *Despicable Me* as object of the study. Based on [www.imdb.com](http://www.imdb.com), *Despicable Me* is one of the most famous animation movies, it has won and been being nominated in several awards. IMDb is one of the acceptable sites of reference because the site contains reference from Writers Guild of America (WGA) and Motion Picture Association of America (MPAA). *Despicable Me* has won several award which are 5 wins and 34 nominations it also introduces memorable character called “minions” which make this movie quite popular. Therefore, considering several factors stated above and the movie’s popularity it is considered appropriate to be taken as object of the study. *Despicable Me* is an animation movie based on a story of a villain who becomes the main character. The main character uses a trio orphan as pawns for a grand scheme. He finds his love profoundly changing him into the better. The figure of Gru, the main character of this movie, will be the main focus of this research.

Gru as the main character takes a very crucial part in the movie. His important role in the movie is what makes the story very amusing and entertaining. In the movie,



Gru's personality is revealed as the story progress. The way Gru interacts with others shows the essence of humanity which resides within the provided characterization. The essence of humanity here refers to a unique personality as what human being has. Cherry (2013, p.1) the differences between one character to another is what make the character unique. In order to know the personality by describing, identifying, and measuring specific traits that what make them different.

Representation of Gru, by all his actions, dialogues, expressions, and all other interactions in the movie will be used by the researcher to apply a personality theory in this study and supported by movie studies.

Personality theory here refers to Jungian psychoanalysis which provides two elements of personality: introversion and extroversion. Based on Sharp (1987, p.12), every person has two personality attitudes introversion and extroversion. A character of the movie is a representation of real person. It means that the character has personality attitudes as a real person has. By implementing Jungian psychoanalysis personality and four functions which consist of thought, feeling, sense, and intuition, this research will reveal the main character's dominant personality. The data are taken from Gru's dialogues, scenes, and narratives or script.

By having more understanding in human personality, people will get more knowledge upon social communication. Even though the instances that will describe Gru's personality are taken from a movie, a character of a movie is a representation of human being. Thus the study is conducted to enrich knowledge

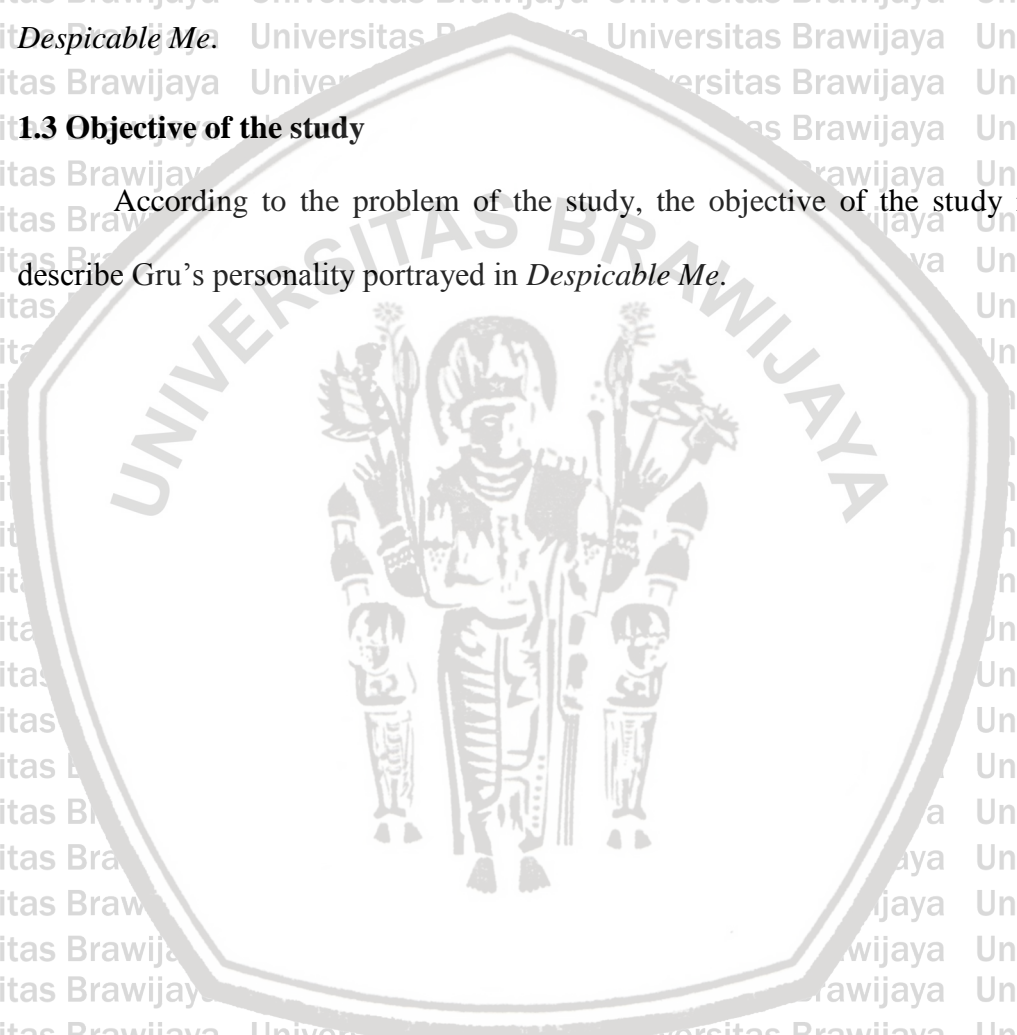
toward characters analysis in the literature so that people get more understanding about literary works particularly in understanding a character in a story.

**1.2 Problem of the study**

The problem of the study is to find out Gru's personality portrayed in *Despicable Me*.

**1.3 Objective of the study**

According to the problem of the study, the objective of the study is to describe Gru's personality portrayed in *Despicable Me*.





## CHAPTER II

### REVIEW OF RELATED LITERATURE AND RESEARCH METHODS

#### 2.1 Theoretical Framework

In this chapter, the researcher is going to explain about characters as one of literary aspect, movie as an object of literary works, synopsis of the movie which is going to be research, movie studies, and also Jungian psychoanalysis by Carl Gustav Jung.

The researcher is going to use the psychology theory from the Carl Gustav Jung which contains two types of personality, i.e. introversion and extraversion into four functions: thinking, feeling, sensing, and intuiting. Therefore, by describing the personality and personality function, the researcher will used the theory into more detailed framework that is a function of introversion and extraversion.

##### 2.1.1 Movie and Literature

“Literature is referred to as the entirety of written expression, with the restriction that not every written document can be categorized as in the more exact sense of the word” (Klarer, 2004, p.1), therefore written document such as telephone books, newspapers, and legal documents are not literary works because written document are not created to transmit individual expression. Beside to express individual expression, literary works is a human object created to keep a trace of individual that will last longer more than the creators themselves.

Like technology, literature has been developed years after years, from the written text to visual expression and the audio-literature which uses sound as

medium to deliver an expression. One of the most famous literary objects, such as drama combines audio and visual element in performance. Movie is even more noticeable than drama, as it combines between images and words exist on the movie.

Movies serve like a book because it is recorded and can be seen anytime.

Movies share similar elements with novels. The way of delivering stories is similar with novel, such as plotting. Movie is also like drama, it consists of plot, setting, character, audience, script, and so on which make movie similar with literary works.

However, drama and films also differ from each other, most obviously both of them are different on the fact that the movie is most likely as book because it is recorded and can be seen anytime and preserved which means last longer rather than individually staged like drama in the unique and unrepeatable manner of theatre performance (Klarer, 2004, p.57). Movie is a part of literary works. Therefore movie, like other literary works such as drama, and novels, can be viewed as literary work because they share common intrinsic element, such as character or actor, plot, setting, etc.

### **2.1.2 Character**

Character is a part of literary work, According to McGee (2001) “a character is a person in literary work”. Character is a representative of humanity which have personality to make a story which gives a pleasure of reading to the reader. There are 2 types of character based on their course of development, flat and round character. Character is a unique intrinsic element that delivers expression of its personality to the reader, because of that character is the representation of human



within the text. According to Wheller (cited in Wheller, 2010, p.5) “any representation of individual being presented in a dramatic or narrative work through extended dramatic or verbal representation. The reader can understand character as endowed with moral and distortional qualities expressed in what they say (dialogue) and what they do (action)”. Character can be recognized from their personality, or even characteristic from the dialogue between character, and the action. Reader and audience can analyse personality and characteristic from the individual of the character interaction among them and what decision they make as the story progress.

**2.1.3 Movie Studies**

Movie has been the anthropology science and many universities have included it as subject of the study. There are a lot of theories about the movie study such as *mise en scene*, framing, text, and character. In this study, the researcher will focus on the framing, and text.

**2.1.3.1 Text**

Text is the most important aspect to be analysed. Villarejo (2007, p.118) states text exists to be read by the reader or spectator. It means the role of text is to give understanding to the reader. The text in this study refers to movie script which include the dialogue, monologue, and narration. In other words, the movie is the data that will be analysed.

**2.1.3.2 Framing**

Based on Villarejo (2007, p.37–38) framing is the way of placing of placing camera. The distance of camera and its object contain information for spectator.

Therefore framing and placing camera can be used to reveal a hidden or implicit information in order to help the analysis. They are six kinds of framing; extreme long shots, long shot, full shot, medium shot, close up shot, and extreme close up shot based on Hayward (2000, p.328-329).

**2.1.3.2.1 Extreme Long Shot**

Extreme long shot take a very far away distance to the object (animate and inanimate). The example of the shot are like a city, earth surface, and galaxy which shows more than one person in scenery.

**2.1.3.2.2 Long shot**

Long shot take a closer range than an extreme long shot. Long shot is aimed to shot a full figure of character and it is surrounding. This shot is used to give better view about the setting which character located.

**2.1.3.2.3 Medium shot**

A medium shot is taken from figure or character waist up. It can show a building with two figure interaction to each other and show them involved in conversation. Medium shot also can show the movement of two person while having a conversation.

**2.1.3.2.4 Full shot**

Full shot is used to show the central parts of body. It takes the range from shoulders to belt of human figure.



#### **2.1.3.2.5 Close up shot**

Close up shot is used to show expression, and emotional responses from characters to follow the conversation. This may help the producer of the movie to deliver a message for the spectator.

#### **2.1.3.2.6 Extreme close up shot**

Extreme close up shot is used to show dramatic impact. The extreme close up shot may show just the eyes of an individual.

By using movie studies the analysis of the study will be focus on the script and supported by framing (shots). The script will be the main element to be analysed while framing will be used to show certain scenes reflecting the main issue of this studies and its meaning.

#### **2.1.4 Jungian Psychoanalysis**

Jung (1971, cited in Feist-Feist, 2008, p.115) defines attitude makes a person act or react differently to each other. Jung also states that every person have two types of attitudes, introvert and extrovert. Although, one may appear in conscious state and the other one in unconscious state.

Jung (1971, Feist-Feist, 2008, p.116) states "Introverts set their mind in to their inner world with all its prejudice, fantasies, dreams, and individualized perceptions". Introversion by the theory of Jungian is oriented to subjective understanding. In other words they tend to understand what happen in their surrounding by all his self-understanding without based on fact. Introverted personality are likely to be passive and less open, an individual that have their own

perception. Jung (1971, cited in Sharp, p.66) is describing that introverted people tend to be mistrustful which mean that they are not easily trust other people especially the strangers and the closed one, self-willed that they must acquire what they want even it is sacrificing other people for own sake. They are not risk taker and often suffer from inferiority which make introvert people less confidence about himself. They are more likely defensive by did not show their weakness, and also they are cautious, honest, not talkative, cannot easily adapt with the situation and environment, polite, and not easily believe on other people which make them rather unsociable because they more likely did not to hang out together with other people.

Quite different with introversion, extraversion tend to be sociable. According to Sharp (1987, p.38) extroverted attitude people lives and moves among environment with confidence. Therefore they play with the environment freely and learn through them. He likes to carry his activity to the extreme and exposes himself to risks. An extrovert tend to be curious, they try to discover something unknown.

People differ to each other in certain basic ways, even though the instincts which drive us are the same. Jung distinguishes two general personality attitude; introversion, and extraversion. The two general personality attitudes are categorized into four function; thought, feeling, sense, and intuition. By using two general attitudes and four functions, researcher can analyse the main character of

*Despicable Me.*



#### 2.1.4.1 Thought Type

Based on Alwisol (2009, p.46) thinking type is an intellectual function. This function is used to connect ideas in understanding or even solve problems. This function is one of the rational function which involve in making a decision.

Sharp (1987, p.71-75) states that introverted thinking people tend to have subjective and innovative idea. They tend to be indifferent to the opinion of others which make them rather stubborn. As Alwisol (2009, p.47) states that introverted thinking people neglect others, because they do not see others as something they want to involve. They tend to create to create thinking independently some even stubborn in his pursuit of ideas, arrogant, and rude

Different from introvert, in order to make a judgment, “extraverted thinking fastens on the criteria supplied by external conditions, that is, those that have been transmitted through tradition and education” (Sharp, 1987, p.44). In other words, they do not depend on creativity or new ideas. They understand something that they have already perceived from environment rather than creating something new of their own. Also, Alwisol (2009, p.47) states that extraverted thinking people have to think objectively. The objective here refers to intimidate or control the others. It means in other words they want to get involve with their surroundings.

#### 2.1.4.2 Feeling Type

Similar to thinking type, based on Alwisol (2009, p.46) feeling type is other rational function. Thinking type related to how someone is connecting ideas but feeling function refers to how someone is evaluating and decides whether something is pleasuring or not. It is simply telling individual mood.

Sharp (1987, p.75-76) states that introverted feeling rarely speak what they feel. They are not adaptable to any social interaction with strangers. Those who can adapt with their characteristic or standard ethic, they will give their positive influence to them. They seem do not care about others whereas actually they love them deeply. Their manifestation of feeling is used to determine whether someone is important, or worth for them.

“Extraverted feeling has detached itself as much as possible from the subjective factor and subordinated itself entirely to the influence of the object” Jung (1971, cited in Sharp 1987 p.49). They tend to avoid conflict in social situation.

They like to take part in social life. They are the type that make friend easily. They can be categorized as selfless people, because they put social need in front of their own need

#### **2.1.4.3 Sense Type**

Sensing type involves all responsive reaction to perceive it into minds.

Based on Alwisol (2009, p.46) this type function use to perceive something and then make it as realities or another form of world representation. In other words this function related to how someone perceiving their world.

Alwisol (2009, p.49) states that introverted sensing people sense the world in their own or a very subjective way and try to express it also in their own subjective way. This statement leads us to an explanation that introverts sensing people sense the world artistically. Sharp (1987, p.79) states “Introverted sensation types, if they are creative artists, have a facility for bringing a scene to life in painting or in writing”. It refers to how introvert sensing people perceive the inner



thought in their mind and realize it to the reality object (painting, furniture, etc)

though the way they realize it depends on their subjective way.

Introvert sense an object oriented to their own subjective way, but based on

Sharp (1987, p.54) extravert response to the object is conditioned by the object. So

they put aside their subjective sensing and replace it only based on what the object

exactly look, smell, or taste like. They are enjoying a concrete object of life.

#### **2.1.4.4 Intuition Type**

This function is related to how someone acts spontaneously and unconsciously. Alwisol (2009, p.46) states that intuiting is a way someone give a stimuli response regardless real or unreal without any consideration of thinking or evaluating. Intuiting function is irrational function.

Alwisol (2009, p.48) states that introverted intuition people creating an answer without considering any reason. They do not need any reason to make the decision. As Alwisol (2009, p.49) that the example of this intuition is fortune teller.

Meanwhile Alwisol (2009, p.48) states that extraverted intuition people related to creativity to fulfil unlimited satisfaction and desire. They dislike routine and tend to make something new.

#### **2.1.5 Synopsis**

The story begins with Gru who want to do his villain grand scheme by shrink the moon and stealing away to prove his as the greatest villain by using three orphans Margo, Edith and Agnes to sell robot cookies to Vector which is used to steal Vector shrink ray.

On the way home, the girls ask to go to amusement park. Gru ends up having fun with the girl. Back at home, he presents his plans to Mr. Perkins via video. The girls keep interrupting him. Perkins again refuse to give him a loan, claiming that he does not have a problem with the plan. He just want a younger villain to do it instead. Gru has a flashback of his childhood, depicting his wanting to go to the moon after seeing the first moon landing. When he tries to impress his mother with models of the rocket, she just ignored him. Gru almost abandons his plans due to lack of funds, but the girl take up a collection to keep it going.

However, Gru have to make a choice because the moon will be in the optimal position of the heist on the same day as the girls' ballet recital. Dr. Nefario, seeing the girl as the distraction, contacts Miss Hatie, who arrives and takes the girls back. Gru still goes on to his plan and going to the moon.

Gru successfully shrinks and pocket the moon. Gru remembers the ballet recital and rushes to go back to it. However, it has ended by the time he arrived. There, he finds a ransom note from Vector demanding the moon in exchange for the girls. After all Gru successfully rescue the girls. Gru and the girls finally settle down to live happy live as a family. The girls give a special ballet recital for Gru, his minions, and his mother, who finally tells him that she is proud of him and acknowledge him to be better parent.

## 2.2 Previous Studies

Vegi Apriansyah (2013) a student of English Department Brawijaya University wrote his thesis entitled, "*A Study of Adler Personality Theory in Chris Gardner's Character in the Pursuit of Happyness Movie*". He was interested in



analysing Chris Gardner's characteristic by applying Addler personality theory.

The main focus of his study is on Chris Gardner individual to overcome his inferiority. These are related to Alfred Addler's theory of personality that talks about somebody's struggle and search to reach superiority. Moreover, the writer also used the movie as moral, philosophical, or social statement approach where it is often called the humanistic approach. This approach is more focused on the message in the movie that goal affect or give lessons to the audience to be better in life. The researcher of this study is to find out Gru's personality on *Despicable Me* by using Jungian psychoanalysis. The researcher interested on Gru's personality by identifying the personality of Gru through scene, screenplay, dialogue between character based on the story. Although both of the researchers using different theory to analyse character but both of them actually have the same research field which is to analyse personality of the main character in the movie.

Meanwhile, Diana Chen Wandin (2013), a student of English Department of Brawijaya University wrote his thesis entitled "*Request Strategies Used by the Main Character of Despicable Me Movie*". She was interested on classifying the request strategies used by the main character of *Despicable Me* Movie, Gru, using Blum Kulka et al theory (1987). This study is aimed to show various request strategies that may be used by Gru in conversation depending on the context.

Meanwhile, in this study the researcher more focuses on analysing Gru as the main character of *Despicable Me* to identifying his personality throughout entire of the story by using Jungian psychoanalysis by analysing it through the dialogue from

the script of the film. Though the object of research is the same, the aim and theory of both study are different from each other.

### 2.3 Research Method

Research method is expected to give a clear step by step done by the researcher during the analysis of the object. There are three steps taken, namely deciding material and formal object, describing personality into four function using Jungian psychoanalysis and drawing conclusion from the data analysed.

#### 2.3.1 Deciding the Material and the Formal Object

The material object of this study is taken from animation movie *Despicable Me*. *Despicable Me* is a 2010 American 3D computer-animated comedy film from Universal Pictures and Illumination Entertainment was released on July 9, 2010 in the United States. *Despicable Me* is one of many movie which is published by Universal Pictures and Illumination Entertainment as an material object of this study

The formal object of this research is Gru's personality. The personality will be found out through the whole movie. The primary data is taken from dialogue from the characters in *Despicable Me* and the secondary data is taken from clipping scenes which may consist of Gru's facial expression. The data will provide movies part where the main character, Gru, appears as the necessary scenes. In this case the researcher uses movie as the research object and *Despicable Me* as the formal object. The main character of this movie is suitable to be studied because the introvert side really dominant on Gru's personality. It is seen from the dialogue, expression and the act which Gru's doing throughout the movie.



### 2.3.2 Collecting the Data Based on Four Function of Jungian Psychoanalysis

In order to collect the data, the research will use Jungian psychoanalysis theory as the main resource in shaping description of the data. Introversion and extraversion personality will be described into four categories based on Jungian psychoanalysis; thought, feeling, sense, and intuition. The Jungian psychoanalysis is used to classify the data into four categories. Each function provides evidences of which personality elements, introvert/extrovert, which Gru tend to have dominantly. The evidences are taken by using script transcription or the dialogue used by Gru and taken from the facial expression from clipping scenes supported by movie studies which can be seen throughout the movie *Despicable Me*.

### 2.3.3 Drawing Conclusion from the Data Analysed

Jungian psychoanalysis theory on this research is used to analyse the personality of Gru. Then, based on the data which are found in the movie, the researcher decides which personality becomes dominant as the conclusion to complete the objective of this research. The conclusion is expected to give a clear objective of this research to the reader.

## CHAPTER III

### FINDING AND DISCUSSION

This chapter will reveal and explain several instances taken by using Jungian psychoanalysis. The researcher has found out that Gru has a tendency to be introvert. In general, introversion finds its orientation in inner, personal factors which seen a lot on Gru throughout the movie. The researcher will prove Gru introverted attitudes further using Jung theory of four function or modes of orientation. The four functions here refer to thought, feeling, sense, and intuition. The evidences found will contain of several captured scenes and some description from dialogues text and narration. All of the evidences will be the core and clues to support theory given in the data to explain Gru's introverted personality portrayed on *Despicable Me*.

#### 3.1 Gru's Thought

Based on Alwisol (2009, p.46) thinking type is an intellectual function. This function is used to connect ideas in understanding or even solve problems. This function is one of the rational function which involve in making a decision.

Sharp (1987, p.71-75) states that introverted thinking people tend to have subjective and innovative idea. They tend to be indifferent to the opinion of others which make them stubborn. As Alwisol (2009, p.47) states that introverted thinking people neglect others, because they do not see others as something they want to involve. They tend to create to create thinking independently some even stubborn in his pursuit of ideas, arrogant, and rude.



Different from introvert, in order to make a judgment, “extraverted thinking fastens on the criteria supplied by external conditions, that is, those that have been transmitted through tradition and education” (Sharp, 1987, p.44). In other words, they do not depend on creativity or new ideas. They understand something that they have already perceived from environment rather than creating something new of their own. Also, Alwisol (2009, p.47) states that extraverted thinking people have to think objectively. The objective here refers to intimidate or control the others. It means in other words they want to get involve with their surroundings.

The scene below as primary datum which shows Gru uses his freeze ray to get rid of long queue in the coffee shop. Also, the script below as datum describe Gru’s action by using his freeze ray toward the visitor in coffee shop.

INT : Starbucks

(Gru enters. The line is mile long. With a groan, Gru pulls out his freeze ray. He aims and .....zap!.)

Gru : Freeze Ray, Freeze Ray, Freeze Ray

(Gru laughs and walks to the head of the line past the frozen costumers. He approaches the terrified barista before daintily taking a cup of coffee from her and plopping a coin into the tip jar.)



**Figure 3.1.1 Gru uses his shrink ray to the people in the coffee shop.  
Despicable Me, (00.04.00-00.04.20)**

One morning, Gru is going in to coffee shop. He enters the coffee shop and find out inside the coffee full of costumer. Gru also sees a long queue in the coffee shop. Gru's impassion because of the long queue, and then he pulls out the freeze ray from behind his black jacket. He freezes the people in queue in order to get a cup coffee and food faster. It shows in the scene above using long shot framing to show Gru and his environment. After he freezes them, Gru then picks up a cup of coffee from the terrified barista. As Alwisol (2009, p.46) states that thought is used to connect ideas in understanding or even solve problems. In this scene shows that Gru solves his problem by using his freeze ray and freezes out the costumer in the coffee shop to get his order faster. The way he uses his freeze ray is definitely very subjective. It means that he uses his freeze ray for his own purpose or arrogant. He neglects his surrounding without want to control or intimidating the others. He pushed away others metaphorically by freezing them which mean he does not want others to be involved in his way. He does not care what others think about what he done, and he only care about his personal enjoyment. Also, Gru uses his idea which no one ever think about or he does not follow what the mainstream do in this situation. As the movies goes, the using of freeze ray is unique to Gru to illustrate his uniqueness.

The dialogue below as primary datum which shows Gru has a conversation with Dr. Nefario regarding the fund to do his grand evil scheme. As a secondary datum, the scene shows Gru stands in the platform with the background of moon.

Gru : What did we do? Well, we stole the Times Square Jumbo Tron  
(Gru gestures to the Times Square Jumbo Tron)



Gru : Nice, huh? That's how I roll! Yeah you all like watching football on that, huh?!

(The minions all cheer)

Gru : But that's not all! We stole the Statue of Liberty!

(The minions cheer)

Gru : The small one from Las Vegas. And I would not even mention the Eiffel Tower!

Gru : Okay, i was not going to tell you about this yet, but I have been working on something very big. Something that will blow this pyramid thing out of the water! And now, thanks to the efforts of my good friend Dr. Nefario....

Nefario : Thank you, thank you

Gru : We have located the shrink ray in a secret lab. And once we take this shrink ray, we will have the capability to pull off the True Crime of the Century! We are going to steal the moon...

Gru : and once the moon is mine, the world will give me whatever I want to get it back! and I will be the greatest villain of all time. That's what i'm talking about!

(Gru's Cell phone rings. It is Dr. Nefario.)

Gru :Yes

Nefario : Hello Gru, I've been crunching on some numbers and I really don't see how we can afford this it can't be done I'm not a miracle worker.

Gru : Hey..... chillax. I'll just get another loan from the bank. They love me!



**Figure 3.1.2 Gru stands in the platform by moon background. *Despicable Me*, (00.11.00-00.11.30)**

On the dialogue above he says that he is working on something very big that will blow out the previous crime of the year which is being viral. The crime of unknown villain who steals pyramid and replace it with giant inflatable replica. His

idea to steal the moon emphasises in the figure above uses long shot which shows Gru stands in the platform with the full moon background in the night. Gru's idea to steal the moon is definitely innovative and subjective it is in line to what he says that it will blow out even the crime of this century; the pyramid thing. Gru's idea of stealing the moon also a masterpiece that is far greater than any crime before.

The object of the stealing is what innovating the whole idea of stealing, because the changing will influence the world where Gru lives. For instance, the victim not only some particular people in the story, but it also may make main character fate can maybe change. He neglects the consequences of stealing the moon that the world will get. By doing so Gru can get whatever he wants from the world after he gets the moon and become the greatest villain for his own purpose. It is in line with Alwisol (2009, p.46) says thought function use to make a decision or to use an idea in order to solve the problem. He also has an idea to get loan from the bank, because Dr. Nefario says that they cannot afford expense in order to execute this idea.

The dialogue below as a primary datum which shows Gru is receiving a phone calls from his mother who calls to tease him. The scene below is provided as a secondary datum which shows that Gru receives phone call from his mother while he is driving his car to the Bank of Evil.

INT : Gru's car

(Gru drives his enormous car down the street. His phone rings)

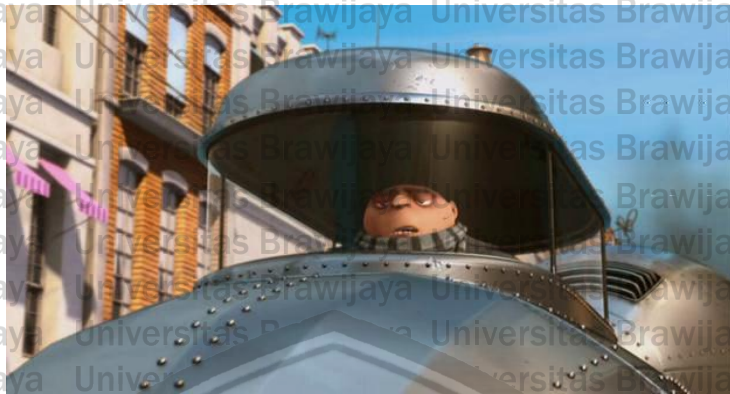
Gru : Hello mom. Sorry, but...

Gru's mom : I just wanted to congratulate you on stealing the pyramid. That was you, was not it? Or was it a villain who is actually successful?

Gru : Just so you know mom, I am about to do something very very big. Very important. When you hear about it you are going to be very proud.

Gru's mom : Hah. Good luck with that. Okay, I am outta here.





**Figure 3.1.3 Gru receives phone call from his mom regarding a news about stolen pyramid. *Despicable Me*, (00.13.30-00.13.40)**

This scene in figure 3.1.3 uses close up shot which shows Gru's annoyed facial expression. When Gru is driving his enormous car to Bank of Evil to get a loan, his phone rings. It is Gru's Mother who calls to tell Gru about the missing pyramid and wonders whether or not Gru has taken part on that big news. Gru who feels teased by his Mother promises that he will do something very big and important which will make her very proud of him. As Alwisol (2009, p.46) states that thought is used to connect ideas in understanding or even solve problems, Gru's problem here is his Mother never praises him and never feels impressed to what he done. Therefore, he thinks that by becoming the greatest villain of all time he can solve his problem with his mom.

The following dialogue and scene happen when Gru wants to get loan from Mr. Perkins in the Bank of Evil. The dialogue below is a primary datum which shows Gru is having conversation with Mr. Perkin who feels impressed about Gru's new evil plan in order to get a loan to build the rocket. The scene followed function as a secondary and it shows Gru who is presenting his blueprint of his plan in order to shrink the moon to the Mr. Perkins.

Mr. Perkins: Wow, well, very nice presentation. I'd like to see this shrink ray.

(Gru squirms in his seat)

Gru : Absolutely. Will do. Soon as I have it

(Mr. Perkins grimaces, disappointed.)

Mr Perkins : You don't have it, and yet you have the audacity to ask the bank for money.

Gru : Apparently.

Mr. Perkins: Do you have any idea of the capital this bank invested in you, Gru? With far too few of your "sinister plots" actually turning a profit?

(Perkins walks around the room)

Mr. Perkins: Let's say this apple is you. If we do not start getting money back...

(Mr. Perkins squeezes the apples and it is explodes.)

Mr. Perkins: Look, Gru, the point is there are a lot of new villains out there. Younger than you. Hungrier than you. Younger than you. Like that young fellow out there named Vector. He just stole the pyramid.

Gru : I've got it, I've got it, Um, so...as far as getting money for the rocket.

Mr. Perkins: Get the shrink ray. Then we'll talk



**Figure 3.1.4 Gru is having conversation with Mr. Perkins.**  
*Despicable Me, (00.16.28-00.17.26)*

The dialogue and the scene above show that Gru is very detailed about his plan to shrink the moon. He shows a blueprint or the concept of the plan to steal the moon to Mr. Perkins which makes Mr. Perkins feels interested about an idea of stealing the moon that no one ever thought about. He also says that Gru's presentation about this evil grand scheme is really good. After that, Gru explains about the process of stealing the moon which includes a new weapon called the



shrink ray which is hidden in the secret lab in East Asia. Because of that, Mr.

Perkins asks him about the shrink ray that Gru's talking about. Gru's plan indeed is a great plan but lack of preparation because he does not have the main weapon.

Unfortunately, Mr. Perkins will not give the money to build a rocket to Gru because he does not have the shrink ray as the main tool to shrink the moon. Mr. Perkins

also says to Gru that his sinister plot in the past is not turning into profit for the

bank. Mr. Perkins also says that there are a lot of younger villains out there whom

he will be happily giving the loan to. Gru still asks to Mr. Perkins about getting

money from him in order to build the rocket. Mr. Perkins then says as far as he is

getting the shrink ray, there is a chance for him to get the money. Gru still sticks to

his own plan by going to secret lab, a place where the shrink ray hidden. He knows

the shrink ray is safely kept in the secret lab. That is why, he is sure that later on his

attempts to steal the shrink ray from the secret lab succeed. However, the shrink

ray has been stolen by Vector; Gru's rival villain. Gru is generally stubborn in order

to pursue his ideas. It is shown when Gru comes to the bank of evil to get a loan to

build rocket from Mr. Perkins. He does not have the main weapon or shrink ray, but

he is brave enough to get a loan from Mr. Perkins. Gru insists to carry out his plan

even after Mr. Perkins emphasises to Gru that his evil scheme in the past is not

turning into profit. Mr. Perkins also says that there are a lot of younger villain out

there that is more capable than Gru. However, Gru is very stubborn to stick on to

his plan.

. The script below shows Gru several failed attempts to get to Vectors Lair.

He meets with the girls whom he hopes which can snatch the Shrink Ray from

Vector hands. The scene on figure 3.1.5 portrays of what Gru thinks about the little girls who sell cookies to Vector. Gru imagines that the girls is a way for Gru to get the shrink ray back from Vector.

EXT : Vector's Lair – Montage

(Gru pole vaults into the wall and Bam! Mechanical boxing repeatedly hit him in the groin.)

He uses a jet pack to fly over the wall.

INT : Vector's Lair – Night

Vector plays the remote like guitar.

EXT : Vector's Lair – Montage

(when WHOOSH! A giant catapult flings him on the roof.)

(Gru aims a bazooka at the front gate. Smash! The gate slams down on him)

(Crunch! A giant shark pops out of manhole and bites down on him.)

(Bzzz! Giant saws slice through Gru's ropes as he scales the walls.)

(Finally, ONE MILLION OTHER WEAPONS transform from the roof to combine one last forceful deterrent at Gru.)

Gru : (Horried!) ohhhhhh.

(An atomic bomb-like explosion. He's done)

EXT : Vector fortress – the next day

(Gru, beaten and burnt and bruised, emerges from a crater of rubble across from Vector's fortress, coughing)

(Then Gru sees the girls approaching Vector's front gate. He laughs bitterly as security cameras are activated and the girls ring Vector buzzer. Gru chuckles to himself.)

(There is a pause. Then the guns retract and the gates open, allowing the girls to enter.)

EXT : Fantasy

Gru can see the girls carrying out the Shrink Ray.



Figure 3.1.5 Gru imagines the girls stealing the shrink ray. *Despicable Me*, (00.22.15-00.24.52)



Figure 3.1.5 shows Gru's imagination of stealing the shrink ray from Vector by using three little girls who are selling cookies in front of Vector's house; Margo, Edith and Agnes. Before meeting with those three girls, Gru already tries variety of ways to enter Vector's lair, but none of them succeed. He insists to avoid his failure of stealing the shrink ray from the Vector by using the little girls as the media to enter Vector's lair which equipped with dangerous weapon. His determination of the process to fulfil his evil grand scheme to steal the moon is very strong. Gru is very stubborn in the pursuit of his ideas. As reflected on how stubborn Gru's become in his grand scheme to steal the moon in his attempts to take back the shrink ray from Vector hands. He will never let this idea fail by doing anything as he can even by using the three little girls as his way to get the shrink ray back.

The following dialogue shows Gru presents his plan again to Mr. Perkins in order to get a loan from him. The scene as a datum which shows Gru is explaining his plan to Mr.Perkins.

(Gru aims the shrink ray at a minion on his sofa and fires it. The minion shrinks to a tiny size.)

(Another minion comes up from behind the couch and flicks the shrunken minion through the air. Gru catches the screaming minion mid-air and squeezes it like squeaky toy.)

Mr. Perkins : Well done, Gru. Rather impressive.

(Gru smiles. Everything going his way. He reaches for a set of slick art cards on an easel.)

Gru : Now the rest of the plan is simple (first card). I fly to the moon (second card), I shrink the moon (third card), I grab the moon (fourth card), I sit on the toilet. What?

Mr. Perkins : No need to continue, I have seen quite enough

Gru : But my plan was...

Mr. Perkins : Is a great plan, I love everything about your plan. Except for one thing: you



**Figure 3.1.6 Gru is explaining his plan stealing of the moon to Mr. Perkins.**  
*Despicable Me, (00.51.30-00.51.55)*

Figure 3.1.6 shows Gru's plan to steal the moon. Gru still insists to get a loan from Mr. Perkins, because he already got the shrink ray. He is explaining about his idea in front of Mr. Perkins to get a loan to build a rocket to the moon and shrink the moon to achieve his purpose to become the greatest villain. Unfortunately, Mr. Perkins does not want to give what Gru wants because he thinks that there is another younger villain that can do better than him. Unfortunately, Mr. Perkins does not lend his money to Gru.

The following script and dialogue are evidences on how introverted thinking Gru is. The script below is a datum which shows Gru reaction after he gets the moon. The scene below is a datum which shows Gru is hold the small moon in his hand as he successfully shrinking that moon.

Gru : Ha! I've got it! I've got the moon! I've got the moon.

(Gru does flip, unhindered by gravity and floats around and around. He's giddy as a school boy. And then, subtly his mood changes. Somehow having the moon is not as satisfying as he thought it would be. Silently, floating in the vastness of the space, Gru looks small and alone. And extremely unfulfilled.)

(Just then, something drifts out of his pocket. It is the ticket to the dance recital. Gru stares at it. Suddenly wanting to be with the girls more than anything. He looks at his watch.)





**Figure 3.1.7 Gru is holding the moon in his hand.**  
*Despicable Me, (01.10.08-01.10.33)*

After passing through a very long process, he succeeded to steal the moon.

However, Gru does not feel as satisfied as it would be after stealing the moon. It is because his feeling toward the girls changes after Gru meets the little girls. In fact, the moon that is already in his hand is less important than his promise to go to the little girls dance recital. All this time Gru is blinded by his idea to become a greatest villain and by his endless efforts to make his Mother proud.

There are 2 types of thought; introverted thinking people and extraverted thinking people. Alwisol (2009, p.46) states that thought is used to connect ideas in understanding or even solve problems. In the evidence above we know that he is using freeze ray in order to get a cup of coffee to show that he uses his subjective idea for his purpose and neglect the surrounding in order to get a cup of coffee and food faster. Also his innovative and subjective idea in order to make his mother proud by becoming greatest villain and stealing the moon. He insisted to get a loan from Bank of Evil by getting the shrink ray which is keep hidden in the secret lab. Also, insisted to get the shrink ray which have been stolen from him by Vector. In order to get the shrink ray he uses the girls from Miss Hattie Orphanage. After all his idea of stealing the moon succeed, but he chooses the girl than his ambitions to

become the greatest villain. In conclusion of this subchapter, Sharp (1987, p.71-75)

states that introverted thinking people tend to have subjective and innovative idea.

They tend to be indifferent to the opinion of others which make them rather

stubborn. As Alwisol (2009, p.47) states that introverted thinking people neglect

others, because they do not see others as something they want to involve. They tend

to create to create thinking independently some even stubborn in his pursuit of

ideas, arrogant, and rude.

### 3.2 Gru's Feeling

Similar to thinking type, based on Alwisol (2009, p.46) feeling type is other

rational function. Thinking type related to how someone is connecting ideas but

feeling function refers to how someone is evaluating and decides whether become

convenient or comfortable with others or not. It is simply telling individual mood.

Sharp (1987, p.75-76) states that introverted feeling rarely speak what they

feel. They are not easily adaptable to any social interaction with strangers. Those

who can adapt with their characteristic or standard ethic, they will give their positive

influence to them. They seem do not care about others whereas actually they love

them deeply. Their manifestation of feeling is used to determine whether someone

is important, or worth for them.

“Extraverted feeling has detached itself as much as possible from the

subjective factor and subordinated itself entirely to the influence of the object” Jung

(1971, cited in Sharp 1987 p.49). They tend to avoid conflict in social situation.

They like to take part in social life. They are the type that make friend easily. They

can be categorized as selfless people, because they put social need in front of their



own need. This theory mainly is used to analyse Gru's relationship with his surroundings.

The following dialogue is a datum which shows Gru is being disturbed by the strangers who ring the doorbell. The scene in figure 3.2.1 shows Gru who peeks into the peephole to see the strangers behind the door.

INT : Gru's lair – moment later

(Gru arrives at the door, holding a club in his free hand. He hears a little girl's voice on the other side.)

Voice : Hellooooo? Cookies for sale!

(Gru stops and looks through his front door peephole, revealing— Margo, Edith, and Agnes. The three little girls carrying boxes of Miss Hatie's cookies. Agnes hold a ragged stuffed unicorn. She's never without it.)

Gru : Go away. I am not home

Margo : Yes, you are. I heard you

Gru : (like a recorded message) No, you didn't...this...is a recording

Margo : No, it isn't

Gru : Yes it is. Watch this—"leave a message –Beep



**Figure 3.2.1 Gru is talking to the girls behind his door.**

*Despicable Me, (00.05.40-00.06.15)*

Gru gets slightly disturbed when someone rings his doorbell. He holds a club with the intention to drive away those strangers. He sees through the peephole on his door to check who those strangers are and sees three children who want to sell cookies. Gru tells them to go away from his house and he even pretends to be a recorded message. Although the girls do not believe that the owner of this

house has leave a recorded message, they go away anyway from the house. Alwisol (2009, p.46) states that feeling function refers to how evaluating and decides whether become convenient or comfortable with others or not. It is simply telling Gru's mood to others. It is an instance on how Gru becomes a cold hearted person and ignore other people or the strangers, in this case the girls, although their intention is only to sell the cookies. Gru even pretends to be a recorded message, although the girls know that there is person talking behind the door. He does not want to be disturbed by strangers.

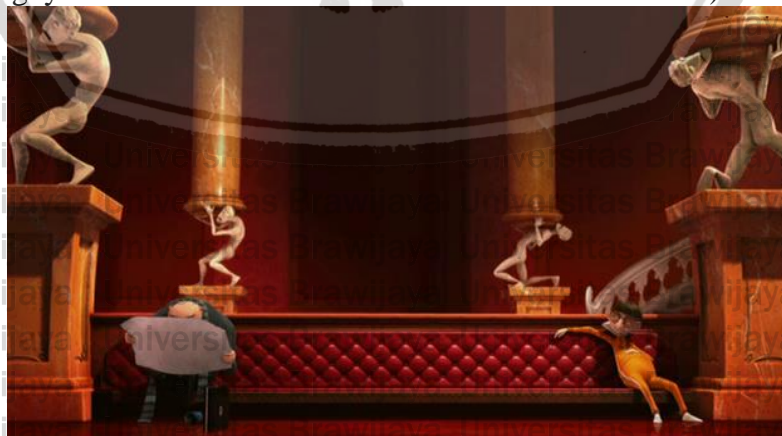
The following dialogue is a datum which shows Gru who is being disturbed by a talkative strangers in a yellow suit namely Vector. The scene in figure 3.2.2, it is seen Gru is trying to keep the distance with Vector who feels uneasy around Vector.

Vector : I am applying for a new villain loan. Go by the name of Vector.

(Gru is irritated and slide down the couch.)

Vector : (gives a Gru smile) it's a mathematical term. A quantity represented by an arrow with both direction and magnitude!

(He points to the arrow/equation on his chest. Gru attempts to ignore the guy. He has now moved down to the end of the couch.)



**Figure 3.2.2 Gru meets Vector in the bank of evil.**  
*Despicable Me, (00.15.30-00.16.25)*



Figure 3.2.2, Gru arrives at the bank of evil. His intention is to ask for a loan for building a rocket. After talking to the receptionist, Gru sits on the waiting room, awaiting for his turn to meet Mr. Perkins, the owner of bank of evil.

He remembers his past about his goals to go to the moon. After being conscious from his daydream, he sees an orange suited guy talking to him. He tries to ignore Vector, an orange suited guy by looking on to his blueprint. Gru's face looks slightly irritated by Vector's presence. Gru slides down to another edge of the couch to avoid Vector to continue talking to him. However, this does not make Vector gives up to introduce himself to Gru. This makes Gru more irritated, somehow. It is shown when Vector talks to Gru. Gru simply does not try to response to what Vector said. He focuses on the blueprint rather than Vector's babbling. Alwisol (2009, p.46) states that feeling function evaluating and decides whether become convenient or comfortable with others or not. It is simply telling Gru's mood toward others. It is the instances on how Gru takes Vector as an annoying people, and Gru feels uneasy around Vector because it is the first time that they meet.

The following dialogue is a datum which shows Gru distracted by the little girls' presence in his secret underground lab. The following scene in figure 3.2.3 close up shot to shows Gru's facial expression whom being frustrated by the girls.

The girls enter Gru's private area.

(Suddenly a toy unicorn appears from behind the table. A tiny hand make makes it hop along.)

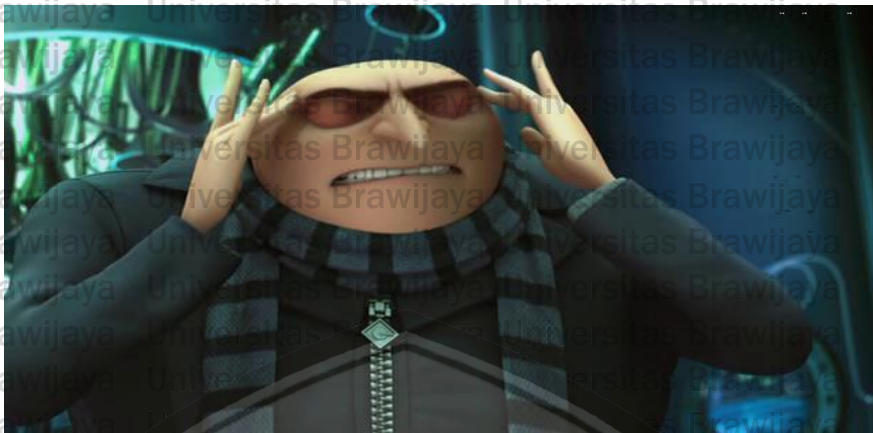
Agnes : La, la, la..... I love unicorns. I love unicorns. If they were real I could pet one

(Gru grits his teeth as he sees the girls emerge from behind the table.)

Gru : What are you doing here? I told you to stay in the kitchen!

Margo : We got bored. What is this place?

Gru : Er.....



**Figure 3.2.3 Gru distracted by three little girls who enter his underground secret lab. *Despicable Me* (00.34.50-00.35.20)**

Gru meets Dr. Nefario in his secret lab and they are discussing about robot cookies that might help them getting the shrink ray back from Vector. In the middle of serious conversation with his fellow companion Dr. Nefario, Gru is distracted by a voice of little girl and a unicorn flying around in the table. Gru sees Margo, Edith and Agnes have entered his most secret place. Only the minions, Gru and Dr. Nefario may enter this place, but coincidentally the girls have found the way to enter the secret place. Because of that, Gru becomes frustrated and tells them to stay away from him, and stay in the kitchen while Gru is working. He will get easily irritated or annoyed with the strangers. It is in line supported by Alwisol (2009, p.46) statement about someone is evaluating and decides whether become convenient or comfortable with others or not. It is simply telling individual mood. It is seen as he is getting frustrated by the girl presence in his privacy area. It is because he still not yet known Agnes, Margo and Edith. Gru needs some more time to know Agnes, Margo, and Edith better. He needs some quality time to spare with other people beside his fellow workers minions and Dr. Nefario.



The following dialogue is a datum shows Margo and Edith praise Gru to what he has done for them although it is a selfish action by blowing up a game stand. The following scene in figure 3.2.4 is a datum which shows Gru expression using close up shot to catch changing facial expression. Gru becomes livelier and happier than before he meets with Agnes, Margo, and Edith.

Agnes : It's so fluffy

Margo : That was awesome!

Edith : You blew up the whole thing!

(And then it's happen, actually connecting with the girls and enjoying being with them, Gru allows a small smile creep across his face.)



**Figure 3.2.4 Gru shows his blissful face after receiving praises from the little girls. *Despicable Me*, (00.46.50-00.50.45)**

Gru who manages to get back the shrink ray from Vector feels very happy.

It can be seen from his mischievous chuckle. In his way to go home, he passes through super silly fun land the amusement park. The girls beg Gru to bring them to super silly fun land. Gru has an idea to get rid of Agnes, Edith and Margo while they are in super silly fun land because his plan to steal the shrink ray from Vector by using the girls has already been fulfilled. They are playing various rides until they arrive on one of the stands in the super silly fun land which provides unicorn doll as a reward if they can finish the challenge. Gru allows the little girls to try the challenge, but unfortunately they fail. Agnes begs Gru to allow her to play and beat

the challenge again. She coincidentally hit the target but does not win the reward.

Gru who becomes agitated with the situation, later tries to finish it with his own way. Gru then takes his weapon out and destroys the stand. The girls then pick their

rewards that should be theirs. Agnes picks a unicorn doll and hugs it with her cheerful face. Edith and Margo say to Gru that what Gru does on the game stand is

awesome. Alwisol (2009, p.46) states that feeling function refers to how someone is evaluating and decides whether something is pleasuring or not. It is simply telling

individual mood. The smile shows on Gru's face indicates that he is happy with what the girls say to him. Gru becomes closer to Edith, Margo, and Agnes because

he coincidentally spends his time with them at Super Silly Fun Land. It shows that Gru becomes comfortable around them now. The girls actually appreciate what Gru

does to the game stand even though it is an extreme way to solve the problem.

The following dialogue shows Gru has conversation with Mr. Perkins related to the moon heist date and dance recital date. The following scene in figure

3.2.5 the right scene uses a close up shot to show Gru's expression toward the girls' drawing on the wall. He smiles upon girls' drawing on the wall which indicates

Gru's become closer with the girls.

INT : Hallway – night

(Gru walks down the hallway, past the framed “Gru Family Tree” on the wall. Does a double-take, noticing that the girls have drawn with the crayon below it to make themselves part of family. Nefario walks up behind him.)

Dr. Nefario : only forty-eight hours to the launch., And all systems are go.

(Gru is uncomfortable and begins picking up after the girls: shoes, socks, toys, goldfish crackers, etc.)

Gru : Um... About that. I was thinking that maybe we could move the heist.



Dr. Nefario : (ready to explode) please tell me that this not as a result of the girls' dance recital? Is it?

Gru : No—the recital? Don't... that's stupid. I just think it's kinda weird to do it on Saturday. I was thinking maybe the heist is a Tuesday thing... tight?

Dr. Nefario : (exploding) Gru! You and I have been working on this for years. It's everything we've dreamed of! Your chance to make history. "The man who stole the moon!" But this girls are becoming a major distraction. They need to go. (Delivering the ultimatum). If you don't do something about it I will.

Gru : I understand.



**Figure 3.2.5 Gru looks happy seeing girls drawing on the wall.**  
*Despicable Me, (01.02.55-01.03.54)*

After gives the girls a good night kisses, Gru walks out in the hallway and has found out the girls drawing below the framed "Gru Family Tree" on the wall.

The girls have drawn the image of themselves below Gru images which indicates that the girls are the part of Gru's family now. It makes Gru smiles to know that the girls view him as their father. Alwisol (2009, p.46) states someone is evaluating and decides whether become convenient or comfortable with others or not. It is simply telling Gru's mood toward others. In this scene, Gru has already feels convenient and comfortable with the girls because of his smiles expression upon the girls drawing on the wall. Also, in the dialogue above deep in his heart he wants to go to the girls dance recital, but he cannot say it to the Dr. Nefario because Gru hides his motives to go to the girl dance recital. Dr. Nefario asks to Gru why Gru wants to move the date of moon heist. Gru using evasive answer, he lies that he does not

want to go to the girl dance recital. Upon knowing about Gru motives to go to the girls dance recital, Dr. Nefario gives Gru ultimatum that Gru should be separated with the girls because they are major distraction for Gru.

The following dialogue is a datum which shows Gru tries to persuade the girls that he will not leave them again and Gru tries to persuade them to be saved by him. The following scene in figure 3.2.6 is a datum which shows Gru is trying to save his lovely little girls from the Vector plane.

Margo : You gave us back.

Gru : I know, I know and it is the worst mistake I ever made. But you have to jump now

(The girls know that Gru is going to be there with them.)

Margo : It will be okay.

(Agnes and Edith jump, and Gru catches the girls and passes them down to Dr. Nefario. Then looks up at Margo, who still seems unsure.)

Gru : Margo I will catch you and I will never let you go again.



**Figure 3.2.6 Gru tries to save the little girls from Vector plane.**  
*Despicable Me, (01.16.40-01.18.00)*

Agnes, Margo, and Edith are captured by Vector in return for the moon. Gru who has been blinded by his desire to become greatest villain finally realizes that his true desire is to live together with Agnes, Margo, and Edith. Gru is willing to give the moon to Vector in return of the girls who are captured by Vector. Gru



realizes that the three little girls are more important than his desire. Gru told Vector that if he hurts the girls Gru will get a revenge to him. Although Gru gives the moon to Vector, Vector does not fulfil his promise to return Agnes, Edith, and Margo.

Vector then flies his plane away to escape from Gru. Gru then chases him to save the girls. In order to escape from Vector they have to jump out of the plane which can endanger them. Agnes, Margo, and Edith must believe in Gru so they can be safe. Gru says that he will not give them back to the orphanage, because it is the worst mistake he ever makes. It is the instance on how Gru changes his view toward the girls. In the first he really hates them, but now he fond of them. It is the instances of how Gru evaluative value toward the girls has completely change.

The following dialogue and narrative shows Gru holds his own dance recital and invited the girls, Gru's Mother, the minions, and Dr. Nefario.

Gru's Mom : I am so proud of you, son. You have turned out to be great parent, just like me. Maybe even better

(Gru attempts a smile)

(Agnes smiles down at Gru and motions for him to come up on stage with her.)

Gru : No, I am fine go ahead!

(Margo pulls him part way on stage. Gru resists and attempts to sit back down, but a wave of minions carries him the rest of the way.)

Gru : No, no, no

Gru : Hey! Agh.

(Gru takes a deep breath and breaks into crazy dance routine.)

(the crowds goes crazy. Cheering and giving Gru a standing ovation.)

(Dr. Nefario dances on stage with Gru's Mom)



**Figure 3.2 7 Gru dances in the stage.**  
*Despicable Me, (01.21.41-01.24.00)*

Gru holds his own dance recital in order to keep his promise in the past. Minions, Gru's mom and Dr Nefario come in this dance recital. As it is known, they are all people that are close to Gru. It is the instances on how Gru does not change from being an introvert. He still is a cold heartless person but appreciate everyone who have met with the Gru's standard ethic and characteristic so that they can get along with. In the narratives tell about the girls who invite him into the stage, but he rejects it at first and the minions force him by dragging him into the stage. It means that Gru's still cannot adapt well with the social situation like this. In this scene, Gru does not look shy anymore in front of his daughters. He shamelessly dance in front of them and blend in with the situation.

In this subchapter discuss about Gru's feeling function toward his surroundings. At first, Gru is a cold hearted person, withdrawn himself toward the stranger. He feels rather uneasy toward Vector whom he meets for the first time in the Bank of Evil. Vector wants to introduce himself to Gru, but Gru always avoids him to get into a conversation. In another events, Gru drives away three little girls who wants to sell cookies to him by pretending to be recorded message.



Coincidentally, he meets again with those girls namely Agnes, Edith, and Margo.

However, Gru is still being cold to them because he only uses them in order to get the shrink ray. Slowly, he becomes closer to the girls whom he adopts after the event in the Super Silly Fun Land. His evaluative feeling toward the girls changes from being cold, and rough into kind, and care to them because the girl have met the standard ethic or characteristic of Gru. In the end, he holds a privacy dance recital with the girl to keep his promises to the girls in the past. Gru's relatives come to the dance recital, such as Dr. Nefario, minions, Gru's Mother, and the girls themselves. Sharp (1987, p.75-76) states introverted feeling people rarely speak what they feel. They are not easily adaptable to any social interaction with strangers. Those who can adapt with their characteristic or standard ethic, they will give their positive influence to them. They seem do not care about others whereas actually they love them deeply. Their manifestation of feeling is used to determine whether someone is important, or worth for them. In conclusion of this subchapter, Gru belongs to introverted feeling people.

### 3.3 Gru's Sense

Sensing type involves all responsive reactions to perceive it into body.

Based on Alwisol (2009) this type functioned to perceive something and then make it as realities or another form of world representation. Alwisol (2009, p.49) states that introvert sensing people have their own subjective way in order to give a meaning to the object. In other word, introvert sensing people have their own personal taste to create or to make an object based on their sense. Meanwhile, Sharp (1987, p.54) states that extravert response to the object is conditioned by the object.

So they put aside their subjective sensing and replace it only based on what the object exactly look, smell, or taste like. They enjoy a concrete object of life. In this subchapter, the researcher is going to analyse Gru's sense toward his surrounding, it can be toward the little girls or the object around him.

The following script is a datum which describes Gru's enormous car which looks unique to others car. In this script also describe on how Gru's black colour and creepy looking house. The scene in figure 3.3.1 is a datum which shows Gru's enormous car and creepy looking house which really different from the surroundings.

EXT : City Street

(Cars drive down a busy city street. First a subcompact....then an SUV.....then an enormous metallic beast of a car, with Gru at the wheel. He sips his coffee.)

EXT : Gru's house morning

(In the middle of typical Suburban Street sits a black, creepy-looking house. Gru pulls his car into the driveway.)



**Figure 3.3.1 Gru drives his enormous car toward his home. *Despicable Me*, (00.04.26-00.04.32)**

Gru has his own way in designing his surroundings. As Alwisol (2009) states about sensing type that functioned to perceive his surrounding and make it into realities or another world representation. The design of his house and car is a



reflection of how Gru manifests his senses into his own artistic taste. Gru has a dark theme house which is really different compared to other houses around his house which looks similar to each other. It shows how subjective he is in expressing his impression regardless he has an evil side. The design of his house and car may be interpreted as Gru's way is not following his surrounding, in this case his neighbourhood. He is not influenced by his surroundings but tries to make his own subjective meaning toward himself. In this particular scene Gru brings his own sensing artistic toward his house and car which look obviously different compared to his surroundings.

The following script and dialogue are provided as data which show that inside Gru's house full of peculiar and scary looking furniture. The following scene in figure 3.3.2 also shows creepy looking furniture inside Gru's house.

Gru : Okay. Here we are. Home sweet home.

(The girls look around. The large black house is very intimidating. They huddle close together. Margo then recognize the place.)

INT : Gru's lair - continuous

(The girls look around, taking in the scary looking interior. Images of demons and Gothic evil are everywhere. Agnes turn to Gru, nervous.)



**Figure 3.3.2 Gru's inside house full of peculiar and scary looking furniture.**

*Despicable Me*, (00.29.35-00.30.06)

Gru and the three little girls have arrived at Gru's home. This place is a creepy looking house and its dark colour makes it different from others. The little girls who look into Gru's house feel hesitated and afraid to enter it. When they finally enter the house, the three little girls he adopts become scared and afraid with the furniture inside of Gru's house. The narrator emphasises that Gru is evil, bad, and wicked person who likes scary looking interior, by describing that Gru's inside house interior looks scary with the image of demons and gothic evil. There are full of atrocious things inside this creepy house, for example a mace that is used to kill or destroy thing, a poster of wanted person, a katana, an empty set of armour, a land trap that could hurt or even break off someone leg and also a strange looking statue that portrays a food chain. There is also a poster of a wanted person and the reward on it which obviously it is a poster of a criminal. It proves that Gru is very fond of objects that are vicious and unusual. It also proves that he is deviance. He even has a carnivore plants which are rarely kept for house ornaments. From all of the point state before that Gru's house inside interior makes the girls afraid, even Agnes becomes nervous with the scenery inside of Gru's house. It is from the stand point of the girls, it proves how Gru is perceiving his surrounding in his own subjective way which is tend to be different and unique. It is emphasises by the description of the narrator that Gru's interior depicted as something really demonic and gothic. .

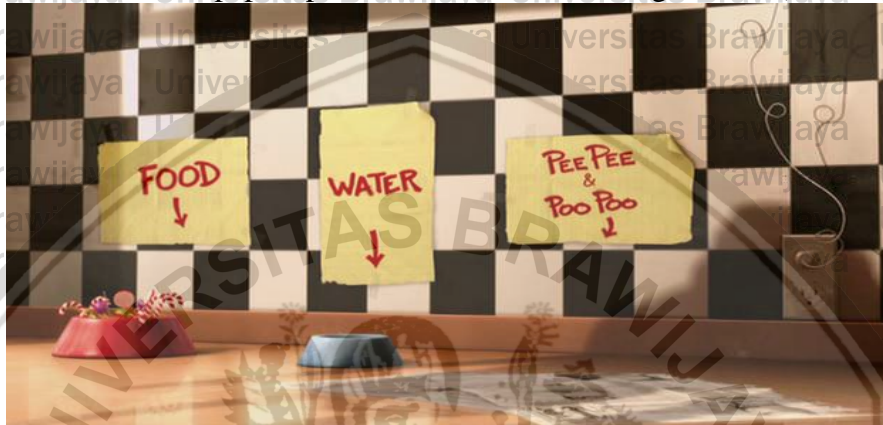
The following dialogue is a datum which shows Gru provides a little girls need by giving them a dog dish filled with candy, a dog dish filled with water, and a newspaper as if they are pets. The following scenes in figure 3.3.4 is a datum which shows a dog dish filled with candy as the girls food to eat, a dog dish filled



with water as the girls drink, and a newspaper in spread out of the floor if the girls want to take a pee and poo.

Gru : As you can see, I have provided everything a child might need.

(Gru points to a dog dish filled with candy, a dog dish filled with water and newspaper spread out of the floor. The girls stare.)



**Figure 3.3.3 Gru provides little girls' need.  
Despicable Me, (00.31.50-00.32.30)**

In figure 3.3.3 shows the subjective sense of Gru by providing the three children with place or tools to eat, drink and take poo and pee as likely as a pet. It shows how subjective Gru's view toward the girls. It may be interpreted as Gru's ignorance, but it more likely refers to how he perceived the world as what he like.

Since the key in subjective way in expressing world, this scene shows how he expresses girls using his own sense with his very subjective way into something like pets. Gru seems does not like kids as they are annoying and uncontrollable.

This trigger him to treat the girls like animals. Gru also has his unique way to treat the little girls not as kids whom he should love and take care of, but more like pets that he adopted. That is why, he provides the little girls need as if he provides animals.

The following dialogue is a datum which show that Margo is really excited for what Gru has done to the pancakes. Gru is designing his pancakes into a peculiar shape like a dead guy, dagger, and a time bomb. The following scene in figure 3.3.4 is a datum which shows Agnes and Margo becomes excited with their pancakes because of the pancakes unique and peculiar shapes.

INT : kitchen – day

(Gru stands in front of the flaming stoves. He serves them pancakes in evil shapes: a body outline, a dagger, a time bomb, etc.)

Edith : Yes, mine shaped like a dead guy!



**Figure 3.3.4 Gru serves pancakes for the little girls.**  
*Despicable Me, (00.58.06-00.58.13)*

The scene in figure 3.3.4 as the portrait sense of Gru is shown by the scene when he serves pancake for the girls. Regardless from being villain or not, Gru has his own way of perceiving the world. The girls really like Gru's weird and peculiar pancakes, because they already accept and accustomed with the things they are now.

Also, as a children they might have a sense that differ from the adult which usually amazed by a new thing although it is represent something bad, wicked, and evil. In order to fit his perception on the world, he has his own artistic taste as seen in the picture above when Gru serves pancakes to his adopted little girls. Margo gets a skull shaped pancake, Agnes gets a sword shaped pancake, and Edith gets a dead



body shaped pancake. The designs of those pancake are the instances on how Gru's own personal taste in perceiving the objects. He likes something vicious and unusual which is not loved by everyone. Gru tends to make something with his own way by serving pancakes designed in unique and peculiar shapes

Gru's sense function is shown in his design of his house, design of his car, furniture around him as the representation of Gru's world. They are two kind people of sense function; introverted sensing people and extraverted sensing people.

Alwisol (2009) states that introverted sensing people have their own personal taste to create or to make an object based on their sense. Meanwhile, Sharp (1987, p.54) says that extraverted sensing people response to the object is conditioned by the object. So, they put aside their subjective sensing and replace it only based on what the object exactly look, smell, or taste like. The representation of Gru's world, many of them are influenced by his personal taste or subjective way. In conclusion of this subchapter, Gru belongs to introverted sensing people because of the way he represents his world by using his personal taste or his own artistic way.

### **3.4 Gru's Intuition**

This function is related to how someone acts spontaneously and unconsciously. Alwisol (2009, p.46) states that intuition is a way someone give a stimuli response regardless real or unreal without any consideration of thinking or evaluating. Similar to sense, this type of function tend to perceive the object.

Alwisol (2009, p.48) states that introverted intuition people creating an answer without considering any reason. They do not need any reason to make the decision.

As Alwisol (2009, p.49) says that the example of this introverted intuition is fortune

teller. Meanwhile Alwisol (2009, p.48) states that extraverted intuition people related to creativity to fulfil unlimited satisfaction and desire. They dislike routine and tend to make something new.

There are several instances in the *Despicable Me* which shows Gru's seems to use intuition function as Alwisol (2009, p.46) says that intuition person acts spontaneously. One of the instances, when Gru uses his freeze ray in order to freeze the people in the coffee shop. It seems at first, if Gru acts spontaneously to freeze the visitor in there without any reason. Alwisol (2009, p.46) says about person using intuition function also acts unconsciously, but Gru uses his freeze ray consciously.

There is a slight moment he thinks and sees his freeze ray which mean there is a process of thinking although it seems that he is doing it spontaneously. It is in line to what Alwisol (2009, p.46) says about thought function is used to connect ideas in order to solve problem. Because of that, the researcher has not found out any related evidences in Gru uses his spontaneous act and also unconsciously.



## CHAPTER IV

### CONCLUSION AND SUGGESTION

#### 4.1 Conclusion

The researcher concludes Gru personality as portrayed in *Despicable Me* as introvert. This conclusion is drawn based on the analysis using Jungian psychoanalysis. It is proven by using more detailed category of personality namely four function proposed by Jung. The researcher finds out that Gru has introverted thinking, introverted feeling, and introverted sensing on his personality. Gru's introverted thinking is shown when he has an idea to steal the moon and sticks to his plan to achieve his goal. Those two actions indicate that he has an original idea, because there is no other villains ever steal the moon before, and he has a subjective way in order to fulfil his desire.

Gru's introverted feeling is shown when he makes a decision that the girls whom he adopted are more important than anything else. This indicates that Gru already perceives the little girls as ones of his closest person in his world, because as we know that introverted feeling people cannot easily create a relationship with others but they will highly appreciate those who can behave well around them. It is in line with how introverted feeling people evaluate someone with their own standard of liking or characteristic, therefore not every person can be their friend.

Based on that theory, it can be concluded that Agnes, Edith and Margo pass the requirement of becoming Gru's close friend, therefore Gru is ready to do anything for their sake.

The third finding of this study is about sense function. Gru's introverted sensing is shown in his design of house, furniture inside his house, and the object around him which fulfil his personal taste. It means that Gru has his own personal taste to perceive his surrounding by owning and designing his stuff in such a peculiar way that people usually notice those as something odd.

#### 4.2 Suggestion

The researcher suggests to the next researcher to use another psychoanalysis theory proposed by other expert such as Hans Eysenck in order to analysed Gru's personality. Hans Eysenck classified personality into three categories or types which is extraversion, neuroticism, and psychoticism. Each of type has different characteristic. Hans Eysenck follow Carl Gustav Jung idea about extraversion and introversion. In the next research, the next researcher can use this personality theory in order to know Gru belongs to which category: Extraversion, Neuroticism, or Psychoticism. The, researcher also suggest another animation movie similar to *Despicable Me* which has similar main character entitled *Megamind*. The next researcher can apply Jung typology into the main character of this movie namely Megamind. The researcher hopes this study can help readers or future researcher in their analysis.



## REFERENCES

Alwisol. (2009). *Edisi Revisi Psikologi Kepribadian*. Malang : UMM Press.

Apriansyah, Vegi. (2013). *A Study of Addler Personality Theory in Chris Gardner Character Pursuit of Happynes*. Thesis unpublished. Malang : Universitas Brawijaya.

Cherry, K. (2013). *What is Psychoanalysis? The Psychoanalytic Approach to Psychology*. Retrieved on August 12, 2014, from <http://psychology.about.com>

Coffin P., Renaud C. (2010). *Despicable Me*. Retrieved on October 1, 2014, from [http://www.imdb.com/title/tt1323594/?ref\\_=fn\\_al\\_tt\\_1](http://www.imdb.com/title/tt1323594/?ref_=fn_al_tt_1).

Feist, J., Feist, G. (2008). *Theories of Personality : 7th Edition*. USA : The Mcgraw-Hill Companies, Inc.

Hayward, S. (2000). *Cinema Studies : The Key Concepts*. London: Routledge Taylor and Francis Group.

Klarer, Mario. (2004). *An Introduction to Literary Work : Second Edition*. NewYork : Routledge Book.

Louise, G., Megan, C. & Abby, C. (2011). *Art that Moves: Animation Around the World*. Chicago : Capstone Global Library, Ltd.

McGee, S., James. (2001). *Analyzing Literature : A Guide for Students*. Salina : Kansas State University.

Paul, Cinco, Ken. D. & Sergio Pablos. (2010). *Despicable Me*. Retrieved on November 10, 2013, from [www.universalphicturesawards.com](http://www.universalphicturesawards.com)

Sharp, Daryl. (1987). *Personality Type : Jung's Model of Typology*. Canada : Thristle Printing Company Ltd.

Villarejo, Amy. (2007). *Film Studies the Basic*. London and New York : Routledge Taylor and Francis Group.

Wandin, D.C. (2013). *Request Strategies Used by the Main Character of Despicable Me*. Thesis Unpublished. Malang : Universitas Brawijaya.

Wheller. (2010). *Literary Term of Characters*. Retrieved on November 23, 2013, from <http://www.freedictionary//characters>.

**Appendix 1: Berita Acara Bimbingan Skripsi**

**KEMENTERIAN PENDIDIKAN  
DAN KEBUDAYAAN  
UNIVERSITAS BRAWIJAYA  
FAKULTAS ILMU BUDAYA**

Jalan Mayjen Haryono No. 169 Malang 65145

Telp. (0354) 551611 Pes. 309

Telex. No. 31873 Fax. (0341) 565420

Telp. (0341) 575822 (direct) Fax. (0341) 575822

**BERITA ACARA BIMBINGAN SKRIPSI**

1. Nama : Yoga Surya Prayogo
2. NIM : 105110100111077
3. Program Studi : Sastra Inggris
4. Judul Skripsi : Gru's Personality Portrayed In *Despicable Me*
5. Tanggal Pengajuan : 25 April 2014
6. Tanggal Selesai Perbaikan : 26 Agustus 2015
7. Nama Pembimbing : I Fredy Nugroho Stiawan, S.S, M.hum.  
II Sri Utami Budi, M.A
8. Keterangan Konsultasi :

No	Tanggal	Materi	Pembimbing	Paraf
1.	25 April 2014	Pengajuan dan persetujuan judul	I	
2.	12 Mei 2014	Pengajuan bab I	I	
3.	17 Oktober 2014	Perbaikan bab I	I	
4.	20 Oktober 2014	Pengajuan bab I	I	
5.	28 Oktober 2014	Perbaikan bab I, dan II	I	
6.	5 November 2014	Pengajuan bab I, dan II	II	
7.	12 November 2014	Perbaikan bab I, dan II	II	
8.	20 November 2014	Perbaikan bab II	I	
9.	10 Desember 2014	Perbaikan bab II	II	
10.	20 Desember 2014	Acc seminar proposal	I	
11.	20 Desember 2014	Acc seminar proposal	II	
12.	29 Desember 2014	Seminar proposal	I	
13.	29 Desember 2014	Seminar proposal	II	
14.	25 April 2015	Perbaikan bab II	I	
15.	1 Mei 2015	Perbaikan bab II	I	
16.	12 Mei 2015	Perbaikan bab II	II	



17.	17 Juni 2015	Pengajuan bab III dan IV	I	
18.	25 Juni 2014	Perbaikan bab III dan IV	I	
19.	5 Juli 2015	Pengajuan bab III dan IV	II	
20.	12 Juli 2015	Perbaikan bab III dan IV	II	
21.	23 Juli 2015	Acc Seminar Hasil	I	
22.	23 Juli 2015	Acc Seminar Hasil	II	
23.	5 Agustus 2015	Seminar Hasil	I	
24.	5 Agustus 2015	Seminar Hasil	II	
25.	12 Agustus 2015	Konsultasi hasil skripsi	I	
26.	21 Agustus 2015	Ujian Skripsi	I	
27.	21 Agustus 2015	Ujian Skripsi	II	

9. Telah dievaluasi dan diuji dengan nilai :

Malang, 26 Agustus 2015

Dosen Pembimbing I

Dosen Pembimbing II

Fredy Nugroho Setiawan, S.S., M.Hum  
NIK. 201201 860306 1 001

Sri Utami Budi, M.A  
NIK. 201304 860101 2 001

Mengetahui,  
Ketua Jurusan Bahasa dan Sastra

Ismatul Khasanah, M.Ed., Ph.D  
NIP. 19750518 200501 2 001