

Lampiran 1. Hasil Kuisisioner Tingkat Kepentingan

Responden	Y <sub>1.1</sub>	Y <sub>1.2</sub>	Y <sub>1.3</sub>	Y <sub>1.4</sub>	Y <sub>2.1</sub>	Y <sub>2.2</sub>	Y <sub>2.3</sub>	Y <sub>3.1</sub>	Y <sub>3.2</sub>	Y <sub>3.3</sub>	Y <sub>4.1</sub>	Y <sub>4.2</sub>	Y <sub>4.3</sub>	Y <sub>4.4</sub>	Y <sub>5.1</sub>	Y <sub>5.2</sub>	Y <sub>5.3</sub>
1	5	4	4	4	5	5	5	5	5	5	4	5	4	4	4	5	5
2	5	4	4	3	5	4	4	4	4	4	5	4	4	5	5	5	5
3	4	5	5	4	5	3	5	5	5	4	5	5	4	5	4	5	5
4	3	4	3	3	3	4	4	5	4	3	4	4	4	4	2	3	4
5	3	4	3	3	4	5	4	4	3	4	3	3	4	4	5	4	4
6	4	4	4	4	4	4	4	5	4	4	4	4	4	4	4	4	4
7	4	4	4	5	4	4	4	4	4	3	4	4	4	4	3	4	3
8	3	3	2	4	4	3	2	2	3	3	2	2	2	4	4	4	4
9	3	3	4	4	4	4	4	4	3	4	4	4	4	4	4	4	4
10	4	3	4	5	4	3	4	5	4	4	4	4	4	4	4	4	4
11	4	3	3	4	4	3	3	5	4	4	3	4	4	4	5	4	4
12	3	3	3	5	3	5	3	3	3	3	3	3	3	3	5	3	3
13	4	5	3	5	4	3	3	3	3	3	4	3	5	4	4	4	3
14	3	5	5	5	3	2	3	4	3	3	3	4	3	2	3	3	4
15	4	5	4	5	4	4	5	5	5	5	4	4	5	5	4	4	4
16	4	5	5	4	5	5	5	4	5	4	5	5	4	5	5	5	5
17	5	5	2	4	5	5	5	5	4	5	4	5	4	5	5	5	4
18	4	5	2	4	4	3	5	5	5	3	4	5	4	4	4	4	4
19	4	3	5	3	4	4	4	4	5	3	4	5	5	3	4	4	3
20	5	5	4	4	5	5	5	3	4	5	3	4	4	4	4	5	4
21	3	5	4	4	4	5	5	4	4	5	4	5	4	4	5	4	5
22	5	5	5	5	3	3	5	4	3	3	4	5	4	5	5	3	5
23	4	5	5	4	4	3	5	5	3	3	3	5	3	5	4	4	4
24	5	5	5	4	5	4	4	4	4	4	4	4	4	4	5	5	5
25	5	5	5	5	5	4	5	4	5	5	5	5	5	5	5	5	5
26	5	5	5	5	5	5	5	5	5	4	5	4	5	5	4	5	5
27	5	5	5	5	5	4	5	4	5	4	5	4	5	5	4	5	5
28	5	5	5	5	5	4	5	5	5	5	4	4	4	5	5	5	5
29	5	5	5	5	4	5	5	4	4	5	5	5	4	5	5	4	5
30	3	5	4	5	3	3	5	4	5	4	5	4	4	3	3	3	5
Jumlah	123	132	121	129	126	118	130	127	123	118	120	126	121	127	127	126	129
Rata-rata	4,10	4,40	4,03	4,30	4,20	3,93	4,33	4,23	4,10	3,93	4,00	4,20	4,03	4,23	4,23	4,20	4,30

Lampiran 2. Hasil Kuisioner Tingkat Kinerja Pelayanan (Kelompok Tani Krisan Muyo Joyo di Kecamatan Batu)

Responden	X <sub>1,1</sub>	X <sub>1,2</sub>	X <sub>1,3</sub>	X <sub>1,4</sub>	X <sub>2,1</sub>	X <sub>2,2</sub>	X <sub>2,3</sub>	X <sub>3,1</sub>	X <sub>3,2</sub>	X <sub>3,3</sub>	X <sub>4,1</sub>	X <sub>4,2</sub>	X <sub>4,3</sub>	X <sub>4,4</sub>	X <sub>5,1</sub>	X <sub>5,2</sub>	X <sub>5,3</sub>
1	3	5	4	3	4	4	4	4	4	4	3	3	3	4	3	3	3
2	3	5	3	5	5	5	4	4	4	3	4	3	3	4	4	3	4
3	4	4	4	4	4	3	4	4	4	4	4	5	3	3	4	3	3
4	3	4	4	3	3	3	4	3	3	3	4	3	3	4	4	3	3
5	5	4	3	4	4	3	4	3	3	5	4	4	3	3	3	3	3
6	4	3	4	4	3	4	4	4	3	3	3	3	3	4	4	3	5
7	3	4	3	4	3	3	4	3	3	4	3	4	3	4	3	3	3
8	4	3	4	4	3	4	5	4	4	4	4	5	4	5	4	4	4
9	4	3	4	4	4	3	3	4	4	3	4	4	3	3	4	4	3
10	5	4	4	5	4	4	4	4	4	4	4	4	4	4	4	4	3
11	5	5	5	5	5	5	5	5	5	5	5	5	5	5	5	5	4
12	4	4	5	5	4	4	4	5	3	5	5	4	4	4	4	4	4
13	4	4	4	5	4	5	4	5	3	4	4	4	5	5	5	4	3
14	4	4	4	4	4	5	4	4	4	5	4	4	4	4	4	4	5
15	4	4	4	4	4	4	4	4	3	4	4	4	4	4	4	4	3
16	4	4	4	4	3	3	5	4	4	5	4	3	3	4	5	4	5
17	3	3	3	3	2	3	2	2	3	2	4	2	3	3	2	2	3
18	3	3	3	3	2	3	2	2	3	4	4	2	3	3	2	2	3
19	3	3	3	4	4	3	3	3	4	3	3	4	3	4	4	3	5
20	3	2	4	4	3	3	4	4	3	3	4	3	4	4	3	4	4
21	3	4	3	4	4	4	4	4	4	4	3	2	4	4	2	3	3
22	3	4	4	4	4	4	4	4	4	4	4	4	4	4	4	4	3
23	4	4	4	3	4	3	3	3	2	3	4	4	4	4	3	4	4
24	4	4	2	4	4	2	2	4	2	3	2	2	2	4	3	4	4
25	4	4	4	4	4	3	4	4	4	4	4	4	4	4	4	3	4
26	4	4	3	3	4	3	4	3	4	4	4	3	4	4	4	4	3
27	4	4	3	4	2	3	3	3	3	4	3	3	4	4	3	4	3
28	3	3	3	3	3	3	3	3	4	3	3	3	3	3	3	3	2
29	3	3	3	4	3	3	4	4	4	3	3	3	4	3	4	4	3
30	3	4	4	4	4	3	2	3	3	2	3	4	2	3	3	3	3
Jumlah	110	113	109	118	108	105	110	110	105	111	112	105	105	115	108	105	105
Rataan	3,67	3,77	3,63	3,93	3,60	3,50	3,67	3,67	3,50	3,70	3,73	3,50	3,50	3,83	3,60	3,50	3,50

Lampiran 3. Hasil Kuisioner Tingkat Kinerja Pelayanan (Kelompok Tani Padmasari II di Kecamatan Tukur Nongkojajar)

Responden	X <sub>1,1</sub>	X <sub>1,2</sub>	X <sub>1,3</sub>	X <sub>1,4</sub>	X <sub>2,1</sub>	X <sub>2,2</sub>	X <sub>2,3</sub>	X <sub>3,1</sub>	X <sub>3,2</sub>	X <sub>3,3</sub>	X <sub>4,1</sub>	X <sub>4,2</sub>	X <sub>4,3</sub>	X <sub>4,4</sub>	X <sub>5,1</sub>	X <sub>5,2</sub>	X <sub>5,3</sub>
1	3	3	4	4	4	3	4	4	3	4	4	4	4	4	4	4	5
2	3	4	4	4	4	3	4	3	4	4	4	4	4	4	4	4	3
3	3	4	3	4	4	3	3	3	4	4	3	4	4	4	3	3	4
4	3	5	3	3	3	3	3	3	3	3	3	3	3	3	3	3	4
5	5	4	3	3	4	4	3	3	3	3	4	3	5	4	4	3	3
6	5	5	5	4	3	3	3	2	3	3	3	4	3	2	3	3	4
7	5	5	3	5	4	5	4	4	5	4	5	4	4	5	4	4	4
8	4	4	4	4	3	4	4	4	4	3	4	4	3	4	4	4	5
9	5	4	5	4	3	5	5	5	4	3	5	4	5	4	5	3	4
10	5	4	5	5	5	5	5	5	5	4	5	5	5	5	5	5	4
11	3	5	3	4	3	3	3	3	3	3	3	3	3	4	3	4	4
12	4	4	4	4	4	3	3	4	3	4	3	3	3	4	3	3	4
13	4	4	4	3	4	3	4	4	3	4	4	4	3	5	4	4	4
14	3	4	4	2	3	3	4	3	4	3	3	3	4	5	4	3	2
15	4	3	3	4	2	3	4	4	3	4	3	3	4	3	3	3	3
16	3	3	4	4	4	5	3	3	3	5	4	4	2	4	2	5	4
17	3	4	4	3	3	5	5	3	3	2	3	3	5	5	3	3	4
18	3	3	3	3	4	4	4	2	4	3	4	3	4	3	4	4	2
19	2	2	2	3	4	4	5	4	4	4	2	3	5	4	3	4	4
20	4	2	3	4	2	2	2	4	3	5	5	2	2	3	2	5	4
21	2	3	3	4	2	2	4	4	3	3	3	3	3	2	4	5	2
22	4	3	2	4	3	3	3	3	3	4	3	4	4	2	3	4	4
23	5	4	4	4	4	4	5	5	5	5	4	4	5	5	5	5	4
24	5	4	5	5	5	5	5	5	5	4	5	5	4	5	5	5	5
25	4	4	2	4	4	2	2	4	4	3	2	2	2	4	3	3	4
26	4	4	4	4	4	3	4	4	3	4	4	4	4	4	4	4	4
27	4	4	3	3	4	3	4	3	4	4	4	3	4	4	4	4	4
28	5	5	4	4	5	4	5	5	4	5	3	4	4	4	4	5	3
29	5	3	4	5	4	4	5	4	4	5	4	5	4	4	5	5	3
30	5	5	5	5	3	3	5	3	3	3	4	5	4	5	5	4	4
Jumlah	117	109	109	116	108	106	117	110	109	112	110	109	113	118	112	118	110
Rataan	3,90	3,83	3,63	3,87	3,60	3,53	3,90	3,67	3,63	3,73	3,67	3,63	3,77	3,93	3,73	3,93	3,67

Lampiran 4. Data Karakteristik Responden

Responden	Jenis Kelamin	Usia	Tingkat Pendidikan	Tingkat Pendapatan	Penggunaan Bunga Potong	Frekuensi Pemesanan	
						Batu (Minggu)	Nongkojajar (Minggu)
1	L	35	SMA	>1.500.000-2.500.000	Toko Bunga	2	2
2	L	53	SMP	>3.500.000	Toko Bunga dan Dekorasi	2	4
3	L	40	SMA	>3.500.000	Toko Bunga dan Dekorasi	4	3
4	L	49	SD	>2.500.000-3.500.000	Dekorasi	3	2
5	P	25	SMA	>2.500.000-3.500.000	Toko Bunga dan Dekorasi	1	4
6	L	43	SMA	>3.500.000	Dekorasi	3	1
7	P	35	SMP	1.500.000	Toko Bunga dan Dekorasi	1	3
8	L	49	SMA	>3.500.000	Dekorasi	2	2
9	P	30	SMA	>3.500.000	Toko Bunga	3	2
10	L	42	SMA	>3.500.000	Toko Bunga dan Dekorasi	6	3
11	L	44	SD	>2.500.000-3.500.000	Toko Bunga dan Dekorasi	3	2
12	L	40	SMA	>3.500.000	Dekorasi	3	3
13	L	37	S1	>3.500.000	Toko Bunga dan Dekorasi	6	3
14	L	48	SMA	>2.500.000-3.500.000	Toko Bunga	3	2
15	L	57	SD	>3.500.000	Dekorasi	3	2
16	P	30	SMA	>2.500.000-3.500.000	Toko Bunga dan Dekorasi	2	3
17	L	45	SD	1.500.000	Toko Bunga	2	1
18	L	30	SMA	>3.500.000	Dekorasi	3	2
19	L	45	SMA	>3.500.000	Dekorasi	3	2
20	L	45	SMA	>2.500.000-3.500.000	Dekorasi	3	1
21	P	42	SMP	>3.500.000	Toko Bunga dan Dekorasi	2	2
22	L	51	SD	>2.500.000-3.500.000	Toko Bunga dan Dekorasi	3	3
23	L	45	S1	>3.500.000	Toko Bunga dan Dekorasi	4	3
24	P	39	SMA	2.500.000-3.500.000	Toko Bunga	3	2
25	L	45	SMP	>3.500.000	Toko Bunga dan Dekorasi	2	4
26	L	50	SMA	>3.500.000	Toko Bunga dan Dekorasi	5	1
27	L	54	SD	>1.500.000-2.500.000	Toko Bunga dan Dekorasi	3	1
28	P	40	SMA	>3.500.000	Toko Bunga	5	3
29	L	20	SMA	>3.500.000	Toko Bunga dan Dekorasi	3	4
30	L	43	SMA	>2.500.000-3.500.000	Dekorasi	3	2



Lampiran 5. Hasil Uji Realibilitas dan Validitas Tingkat Kepentingan

1. Bukti Fisik

**Reliability Statistics**

Cronbach's Alpha	N of Items
.658	4

**Correlations**

		Y1.1	Y1.2	Y1.3	Y1.4	JUMLAH1
Y1.1	Pearson Correlation	1	.412*	.382*	.190	.703**
	Sig. (2-tailed)		.024	.037	.316	.000
	N	30	30	30	30	30
Y1.2	Pearson Correlation	.412*	1	.365*	.326	.739**
	Sig. (2-tailed)	.024		.048	.079	.000
	N	30	30	30	30	30
Y1.3	Pearson Correlation	.382*	.365*	1	.280	.766**
	Sig. (2-tailed)	.037	.048		.134	.000
	N	30	30	30	30	30
Y1.4	Pearson Correlation	.190	.326	.280	1	.596**
	Sig. (2-tailed)	.316	.079	.134		.001
	N	30	30	30	30	30
JUMLAH1	Pearson Correlation	.703**	.739**	.766**	.596**	1
	Sig. (2-tailed)	.000	.000	.000	.001	
	N	30	30	30	30	30

\*. Correlation is significant at the 0.05 level (2-tailed).

\*\* Correlation is significant at the 0.01 level (2-tailed).

2. Keandalan

**Reliability Statistics**

Cronbach's Alpha	N of Items
.652	3

**Correlations**

		Y2.1	Y2.2	Y2.3	JUMLAH5
Y2.1	Pearson Correlation	1	.411*	.400*	.754**
	Sig. (2-tailed)		.024	.028	.000
	N	30	30	30	30
Y2.2	Pearson Correlation	.411*	1	.361	.784**
	Sig. (2-tailed)	.024		.050	.000
	N	30	30	30	30
Y2.3	Pearson Correlation	.400*	.361	1	.772**
	Sig. (2-tailed)	.028	.050		.000
	N	30	30	30	30
JUMLAH5	Pearson Correlation	.754**	.784**	.772**	1
	Sig. (2-tailed)	.000	.000	.000	
	N	30	30	30	30

\*. Correlation is significant at the 0.05 level (2-tailed).

\*\* Correlation is significant at the 0.01 level (2-tailed).

3. Daya Tanggap

**Reliability Statistics**

Cronbach's Alpha	N of Items
.656	3

**Correlations**

		Y3.1	Y3.2	Y3.3	JUMLAH3
Y3.1	Pearson Correlation	1	.461*	.254	.739**
	Sig. (2-tailed)		.010	.176	.000
	N	30	30	30	30
Y3.2	Pearson Correlation	.461*	1	.449*	.831**
	Sig. (2-tailed)	.010		.013	.000
	N	30	30	30	30
Y3.3	Pearson Correlation	.254	.449*	1	.738**
	Sig. (2-tailed)	.176	.013		.000

N		30	30	30	30
JUMLAH3	Pearson Correlation	.739**	.831**	.738**	1
	Sig. (2-tailed)	.000	.000	.000	
N		30	30	30	30

\*. Correlation is significant at the 0.05 level (2-tailed).

\*\* Correlation is significant at the 0.01 level (2-tailed).

#### 4. Jaminan

##### Reliability Statistics

Cronbach's Alpha	N of Items
.752	4

##### Correlations

		Y4.1	Y4.2	Y4.3	Y44	JUMLAH4
Y4.1	Pearson Correlation	1	.518**	.655**	.452*	.904**
	Sig. (2-tailed)		.003	.000	.012	.000
	N	30	30	30	30	29
Y4.2	Pearson Correlation	.518**	1	.325	.328	.722**
	Sig. (2-tailed)	.003		.079	.077	.000
	N	30	30	30	30	29
Y4.3	Pearson Correlation	.655**	.325	1	.318	.739**
	Sig. (2-tailed)	.000	.079		.087	.000
	N	30	30	30	30	29
Y44	Pearson Correlation	.452*	.328	.318	1	.724**
	Sig. (2-tailed)	.012	.077	.087		.000
	N	30	30	30	30	29
JUMLAH4	Pearson Correlation	.904**	.722**	.739**	.724**	1
	Sig. (2-tailed)	.000	.000	.000	.000	
	N	29	29	29	29	29

\*\* Correlation is significant at the 0.01 level (2-tailed).

\* Correlation is significant at the 0.05 level (2-tailed).



5. Empati

**Reliability Statistics**

Cronbach's Alpha	N of Items
.649	3

**Correlations**

		Y5.1	Y5.2	Y5.3	JUMLAH5
Y5.1	Pearson Correlation	1	.412*	.311	.766**
	Sig. (2-tailed)		.024	.094	.000
	N	30	30	30	30
Y5.2	Pearson Correlation	.412*	1	.426*	.793**
	Sig. (2-tailed)	.024		.019	.000
	N	30	30	30	30
Y5.3	Pearson Correlation	.311	.426*	1	.742**
	Sig. (2-tailed)	.094	.019		.000
	N	30	30	30	30
JUMLAH5	Pearson Correlation	.766**	.793**	.742**	1
	Sig. (2-tailed)	.000	.000	.000	
	N	30	30	30	30

\*. Correlation is significant at the 0.05 level (2-tailed).

\*\* . Correlation is significant at the 0.01 level (2-tailed).



Lampiran 6. Hasil Uji Realibilitas dan Validitas Tingkat Kinerja

1. Bukti Fisik

**Reliability Statistics**

Cronbach's Alpha	N of Items
.641	4

**Correlations**

		X1.1	X1.2	X1.3	X1.4	Jumlah1
X1.1	Pearson Correlation	1	.282	.338	.435*	.738**
	Sig. (2-tailed)		.131	.068	.016	.000
	N	30	30	30	30	30
X1.2	Pearson Correlation	.282	1	.185	.281	.635**
	Sig. (2-tailed)	.131		.328	.133	.000
	N	30	30	30	30	30
X1.3	Pearson Correlation	.338	.185	1	.344	.673**
	Sig. (2-tailed)	.068	.328		.063	.000
	N	30	30	30	30	30
X1.4	Pearson Correlation	.435*	.281	.344	1	.733**
	Sig. (2-tailed)	.016	.133	.063		.000
	N	30	30	30	30	30
Jumlah1	Pearson Correlation	.738**	.635**	.673**	.733**	1
	Sig. (2-tailed)	.000	.000	.000	.000	
	N	30	30	30	30	30

\*. Correlation is significant at the 0.05 level (2-tailed).

\*\* . Correlation is significant at the 0.01 level (2-tailed).

2. Keandalan

**Reliability Statistics**

Cronbach's Alpha	N of Items
.697	3

**Correlations**

		X2.1	X2.2	X2.3	JUMLAH2
X2.1	Pearson Correlation	1	.461*	.318	.740**
	Sig. (2-tailed)		.010	.087	.000
	N	30	30	30	30
X2.2	Pearson Correlation	.461*	1	.526**	.835**
	Sig. (2-tailed)	.010		.003	.000
	N	30	30	30	30
X2.3	Pearson Correlation	.318	.526**	1	.793**
	Sig. (2-tailed)	.087	.003		.000
	N	30	30	30	30
JUMLAH2	Pearson Correlation	.740**	.835**	.793**	1
	Sig. (2-tailed)	.000	.000	.000	
	N	30	30	30	30

\*. Correlation is significant at the 0.05 level (2-tailed).

\*\* Correlation is significant at the 0.01 level (2-tailed).

3. Daya Tanggap

**Reliability Statistics**

Cronbach's Alpha	N of Items
.635	3

**Correlations**

		X3.1	X3.2	X3.3	JUMLAH3
X3.1	Pearson Correlation	1	.333	.435*	.777**
	Sig. (2-tailed)		.072	.016	.000
	N	30	30	30	30
X3.2	Pearson Correlation	.333	1	.332	.698**
	Sig. (2-tailed)	.072		.073	.000
	N	30	30	30	30
X3.3	Pearson Correlation	.435*	.332	1	.802**
	Sig. (2-tailed)	.016	.073		.000

N		30	30	30	30
JUMLAH3	Pearson Correlation	.777**	.698**	.802**	1
	Sig. (2-tailed)	.000	.000	.000	
N		30	30	30	30

\*. Correlation is significant at the 0.05 level (2-tailed).

\*\* Correlation is significant at the 0.01 level (2-tailed).

#### 4. Jaminan

##### Reliability Statistics

Cronbach's Alpha	N of Items
.725	4

##### Correlations

		X4.1	X4.2	X4.3	X4.4	JUMLAH4
X4.1	Pearson Correlation	1	.438*	.516**	.243	.728**
	Sig. (2-tailed)		.015	.004	.196	.000
	N	30	30	30	30	30
X4.2	Pearson Correlation	.438*	1	.356	.304	.749**
	Sig. (2-tailed)	.015		.053	.102	.000
	N	30	30	30	30	30
X4.3	Pearson Correlation	.516**	.356	1	.597**	.815**
	Sig. (2-tailed)	.004	.053		.000	.000
	N	30	30	30	30	30
X4.4	Pearson Correlation	.243	.304	.597**	1	.685**
	Sig. (2-tailed)	.196	.102	.000		.000
	N	30	30	30	30	30
JUMLAH4	Pearson Correlation	.728**	.749**	.815**	.685**	1
	Sig. (2-tailed)	.000	.000	.000	.000	
	N	30	30	30	30	30

\*. Correlation is significant at the 0.05 level (2-tailed).

\*\* Correlation is significant at the 0.01 level (2-tailed).

5. Empati

**Reliability Statistics**

Cronbach's Alpha	N of Items
.674	3

**Correlations**

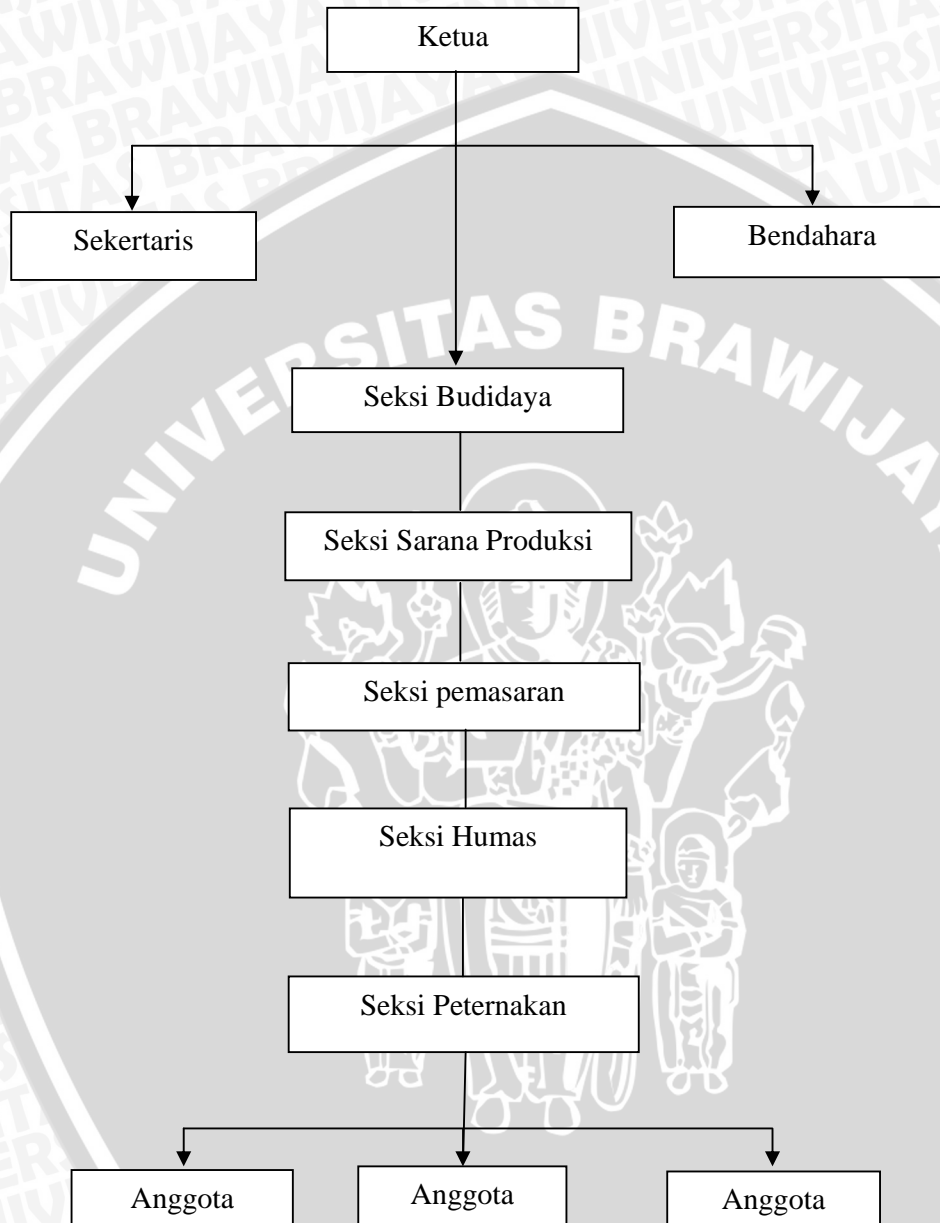
		X5.1	X5.2	X5.3	JUMLAH5
X5.1	Pearson Correlation	1	.621**	.382*	.865**
	Sig. (2-tailed)		.000	.037	.000
	N	30	30	30	30
X5.2	Pearson Correlation	.621**	1	.228	.769**
	Sig. (2-tailed)	.000		.226	.000
	N	30	30	30	30
X5.3	Pearson Correlation	.382*	.228	1	.701**
	Sig. (2-tailed)	.037	.226		.000
	N	30	30	30	30
JUMLAH5	Pearson Correlation	.865**	.769**	.701**	1
	Sig. (2-tailed)	.000	.000	.000	
	N	30	30	30	30

\*\* . Correlation is significant at the 0.01 level (2-tailed).

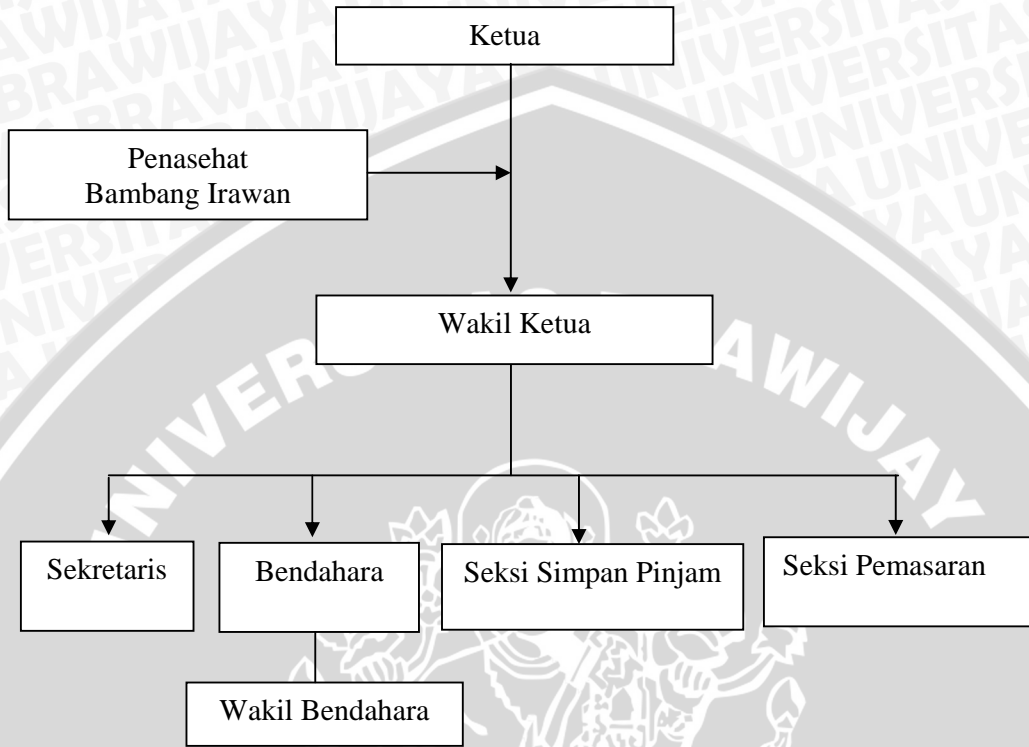
\* . Correlation is significant at the 0.05 level (2-tailed).



Lampiran 7. Struktur Organisasi Kelompok Tani Krisan Mulyo Joyo di Kecamatan Batu



Lampiran 8. Struktur Organisasi Kelompok Tani Padmasari II di Kecamatan Tukur Nongkojajar



Lampiran 9. Hasil Produksi Krisan Kelompok Tani Krisan Mulyo Joyo di Kecamatan Batu

No	Jabatan	Luas Lahan (m <sup>2</sup> )	Produksi (Tangkai)
1	Ketua	2900	49.500
2	Sekretaris	2400	45.000
3	Bendahara I	1400	18.000
4	Bendahara II	300	9.000
5	Sie Budidaya	500	22.500
6	Sie Sarana Produksi	300	13.300
7	Sie Pemasaran	5.000	225.000
8	Sie Humas	2000	90.000
9	Sie Peternakan	2500	112.500
10	Anggota	1000	45.000
11	Anggota	500	22.500
12	Anggota	500	22.500
13	Anggota	500	22.500
14	Anggota	300	13.500
15	Anggota	-	-
16	Anggota	300	13.500
17	Anggota	-	-
18	Anggota	400	18.000
19	Anggota	-	-
20	Anggota	200	9.000
21	Anggota	200	9.000
22	Anggota	200	9.000

Sumber: Data primer diolah (2014)



Lampiran 10. Hasil Produksi Krisan Kelompok Tani Padmasari II di Kecamatan Tuter Nongkojajar

No	Jabatan	Luas Lahan (m <sup>2</sup> )	Produksi (Tangkai)
1	Penasehat	5.000	200.000
2	Ketua	500	25.000
3	Wk. Ketua dan Pemasaran	900	45.000
4	Sekretaris	3.000	140.000
5	Bendahara	500	25.000
6	Sie Simpan Pinjam	845	25.000
7	Wk. Bendahara	1.500	275.000
8	Sie. Pemasaran	600	300.000
9	Sie Pemasaran	3.000	150.000
10	Anggota	1.000	50.000
11	Anggota	1.000	60.000
12	Anggota	55	3.500
13	Anggota	400	17.500
14	Anggota	600	30.00
15	Anggota	3000	70.000
16	Anggota	500	20.000
17	Anggota	500	20.000
18	Anggota	195	14.500
19	Anggota	250	10.000
20	Anggota	1.330	60.000
21	Anggota	500	20.000
22	Anggota	400	17.500

Sumber: Data primer diolah (2014)

Lampiran 11. Dokumentasi Kegiatan Kelompok Tani Krisan Mulyo Joyo di Kecamatan Batu



Alat Transportasi Pemasok



Pengemasan Bunga Potong Krisan



Tempat Penyimpanan Bunga Potong Krisan



Lampiran 12. Dokumentasi Kegiatan Kelompok Tani Padmasari II di Kecamatan Nongkojajar



Alat Transportasi Pemasok



Pengemasan Bunga Potong Krisan



Tempat Penyimpanan Bunga Potong Krisan