

Lampiran 6. Dokumentasi Warna Hipokotil di dua Lokasi

A. Lokasi Tulungagung

B. Lokasi Malang



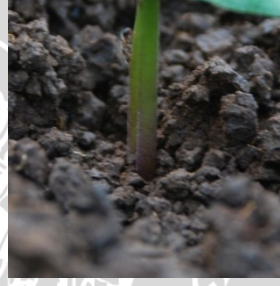
G1{7NB#ANJ(1000)(1/10)S}



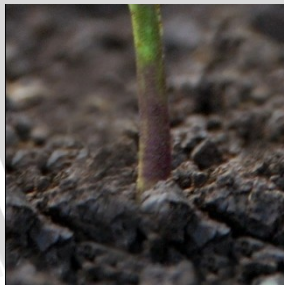
G1{7NB#ANJ(1000)(1/10)S}



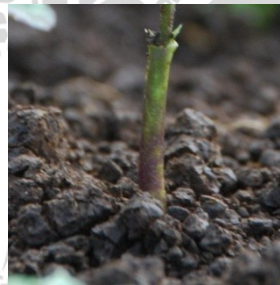
G2{10NB#KB(500)(2/20)S}



G2{10NB#KB(500)(2/20)S}



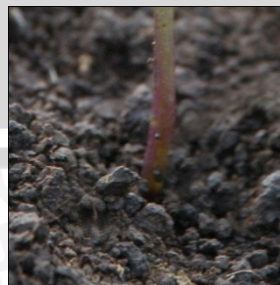
G3{20NB#ANJ(100)(1/9)S}



G3{20NB#ANJ(100)(1/9)S}



G4{16NB#ANJ(500)(2/16)S}



G4{16NB#ANJ(500)(2/16)S}





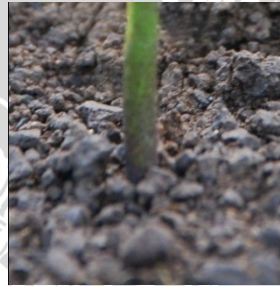
G5{17NB#ANJ(1000)(1/5)S}



G5{17NB#ANJ(1000)(1/5)S}



G6{26NB#ANJ(500)(1/11)S}



G6{26NB#ANJ(500)(1/11)S}



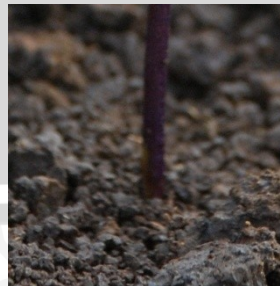
G7{33NB#ANJ(500)(2/3)S}



G7{33NB#ANJ(500)(2/3)S}



G8{Kaba}



G8{Kaba}





G9 {Anjasmoro}



G9 {Anjasmoro}

Warna Hipokotil :

Ungu : Tulungagung : G1, G2, G3, G4, G5, G6, G7, G8, G9
 Malang : G1, G2, G3, G4, G7, G8, G9

Hijau : Tulungagung : Tidak Ada
 Malang : G5, G6

UNIVERSITAS BRAWIJAYA



Lampiran 7. Dokumentasi Warna Bunga di dua Lokasi

A. Lokasi Tulungagung

B. Lokasi Malang



G1 {7NB#ANJ(1000)(1/10)S}



G1 {7NB#ANJ(1000)(1/10)S}



G2 {10NB#KB(500)(2/20)S}



G2 {10NB#KB(500)(2/20)S}



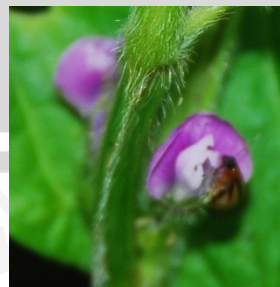
G3 {20NB#ANJ(100)(1/9)S}



G3 {20NB#ANJ(100)(1/9)S}



G4 {16NB#ANJ(500)(2/16)S}



G4 {16NB#ANJ(500)(2/16)S}



G5 {17NB#ANJ(1000)(1/5)S}



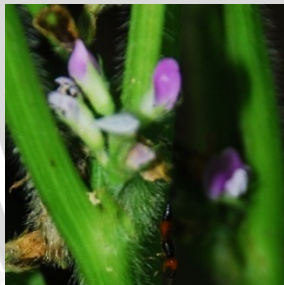
G5 {17NB#ANJ(1000)(1/5)S}



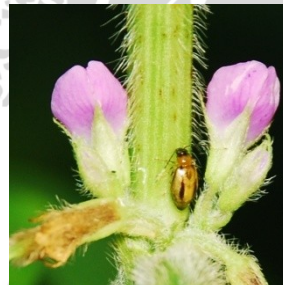
G6 {26NB#ANJ(500)(1/11)S}



G6 {26NB#ANJ(500)(1/11)S}



G7 {33NB#ANJ(500)(2/3)S}



G7 {33NB#ANJ(500)(2/3)S}



G8 {Kaba}



G8 {Kaba}



G9{Anjasmoro}



G9{Anjasmoro}



Lampiran 8. Dokumentasi Intensitas Bulu di dua Lokasi

A. Lokasi Tulungagung

B. Lokasi Malang



G1 {7NB#ANJ(1000)(1/10)S}



G1 {7NB#ANJ(1000)(1/10)S}



G2 {10NB#KB(500)(2/20)S}



G2 {10NB#KB(500)(2/20)S}



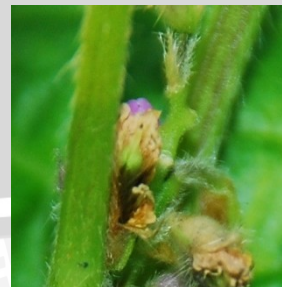
G3 {20NB#ANJ(100)(1/9)S}



G3 {20NB#ANJ(100)(1/9)S}

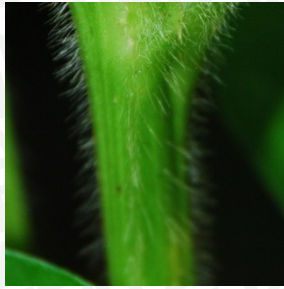


G4 {16NB#ANJ(500)(2/16)S}



G4 {16NB#ANJ(500)(2/16)S}





G5{17NB#ANJ(1000)(1/5)S}



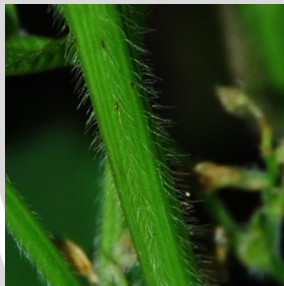
G5{17NB#ANJ(1000)(1/5)S}



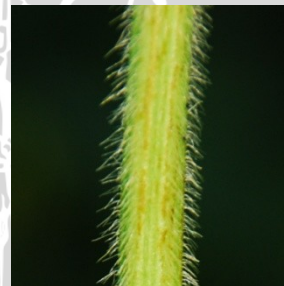
G6{26NB#ANJ(500)(1/11)S}



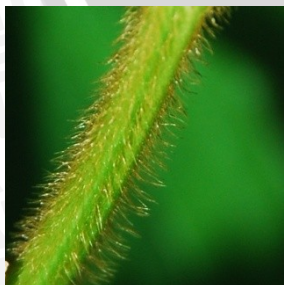
G6{26NB#ANJ(500)(1/11)S}



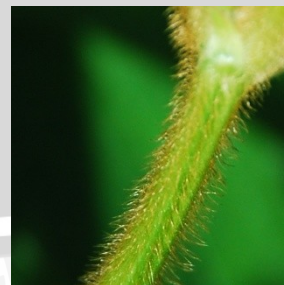
G7{33NB#ANJ(500)(2/3)S}



G7{33NB#ANJ(500)(2/3)S}



G8{Kaba}



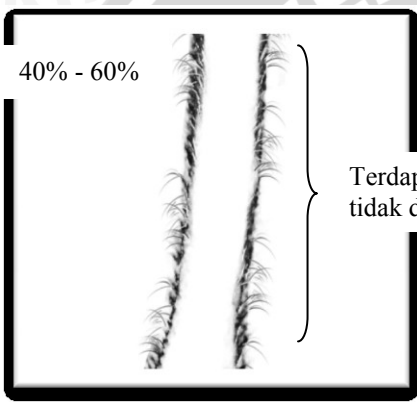
G8{Kaba}



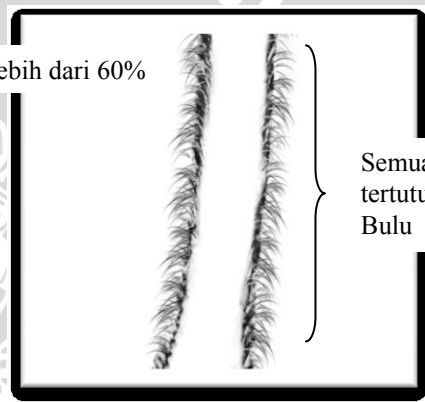
G9 {Anjasmoro}



G9 {Anjasmoro}



Sedikit



Banyak

Terdapat rongga yang tidak ditumbuhi bulu

Semua tertutupi Bulu

(PPI,2007)

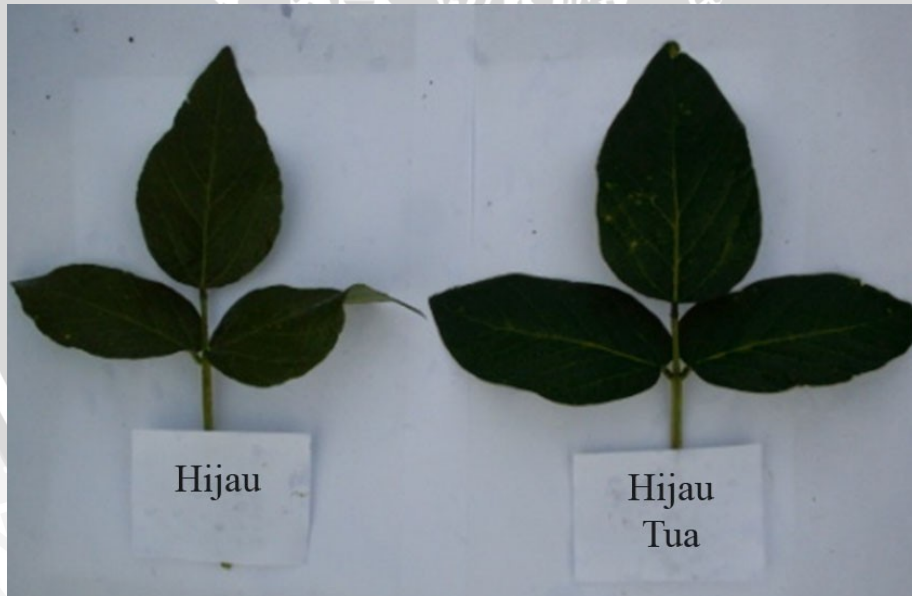
- Tulungagung : Sedikit : G4 , G9
- : Banyak : G1, G2, G3, G5, G6, G7, G8
- Malang : Sedikit : G1, G4, G6, G9
- : Banyak : G2, G3, G5, G7, G8

Lampiran 9. Dokumentasi Warna Daun dan Bentuk Daun

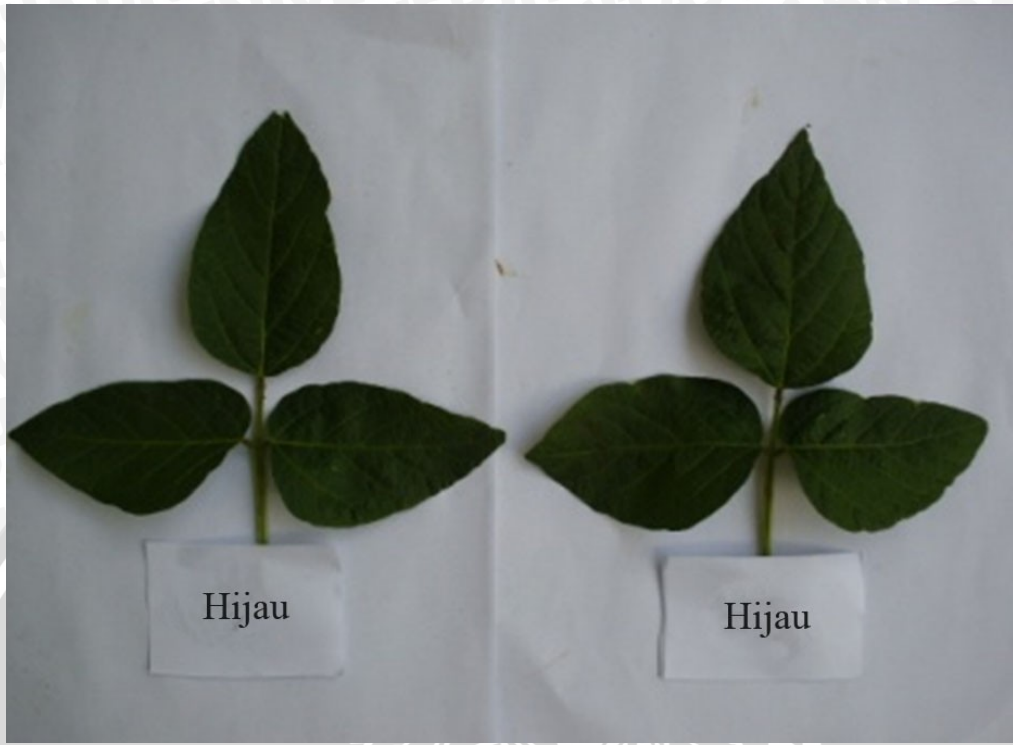
A. Warna Daun



Perbandingan Hijau dan Hijau muda

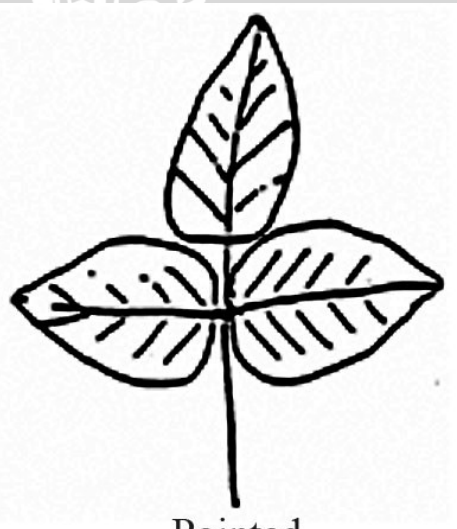
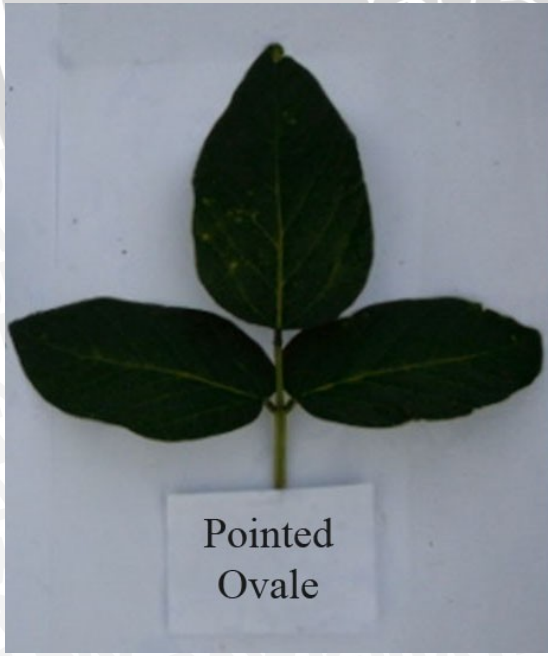


Perbandingan Hijau dan Hijau tua



Perbandingan Hijau dan Hijau

B. Bentuk Daun



(PPI, 2007)

Perbandingan Pengamatan dan Gambar

Lampiran 10. Tipe Tumbuh Batang dan Tipe Percabangan

A. Tipe tumbuh batang



(a)

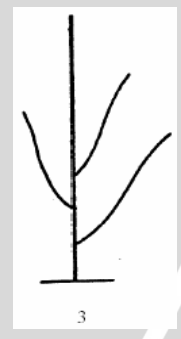
(b)

(a) Determinate (G7, G8, G9)

(b) Semi Indeterminate (G1, G2, G3, G4, G5, G6)

(PPI,2007)

B. Tipe percabangan



(a)

(b)

(a) erect-semi erect

(b) semi erect

(a) Erect – semi erect / Tegak – agak tegak : G1, G2, G3, G5, G6, G7, G9

(b) Semi erect / Agak tegak : G4, G8

(PPI,2007)

Lampiran 11. Dokumentasi Warna Polong



G1 {7NB#ANJ(1000)(1/10)S}



G2 {10NB#KB(500)(2/20)S}



G3 {20NB#ANJ(100)(1/9)S}



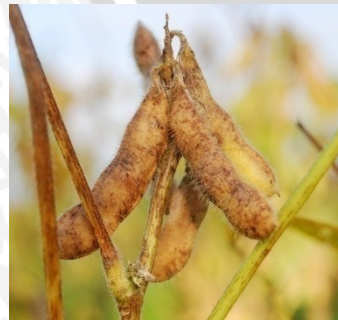
G4 {16NB#ANJ(500)(2/16)S}



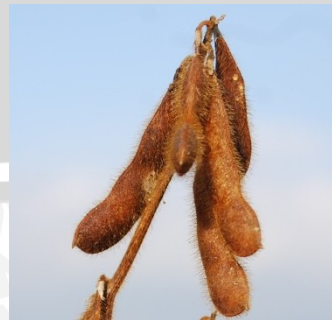
G5 {17NB#ANJ(1000)(1/5)S}



G6 {26NB#ANJ(500)(1/11)S}



G7 {33NB#ANJ(500)(2/3)S}



G8 {Kaba}





G9 {Anjasmoro}

Perbandingan Warna Coklat Muda dan Coklat



Coklat Muda



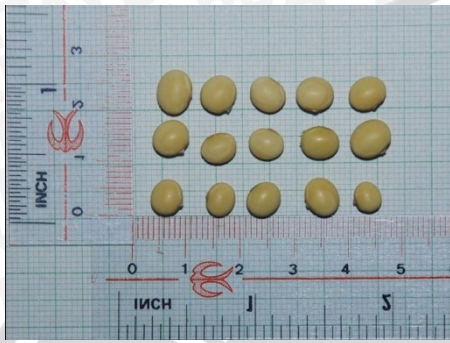
Coklat

Warna Polong Coklat Muda : G1, G3, G4, G5, G6, G7, G9

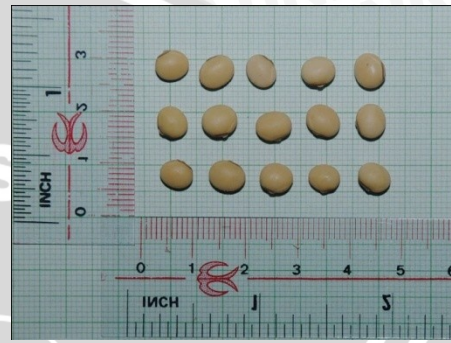
Warna Polong Coklat : G2, G8



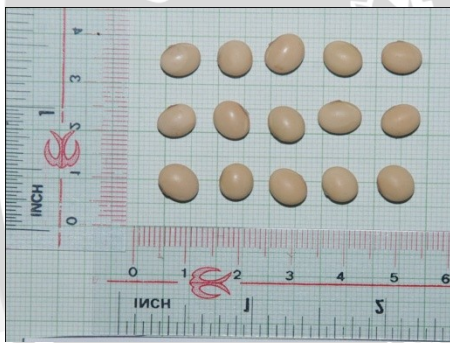
Lampiran 12. Dokumentasi Bentuk Biji dan Warna Biji



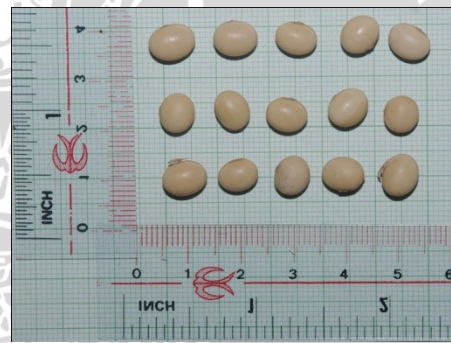
G1 {7NB#ANJ(1000)(1/10)S}



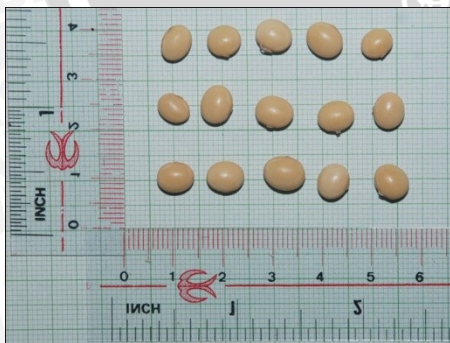
G2 {10NB#KB(500)(2/20)S}



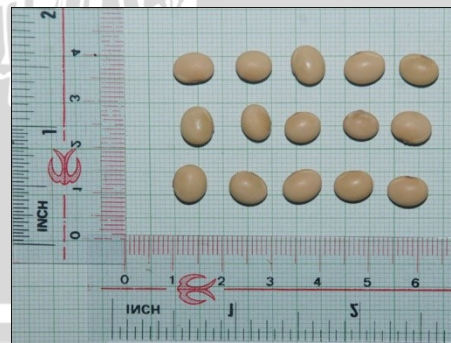
G3 {20NB#ANJ(100)(1/9)S}



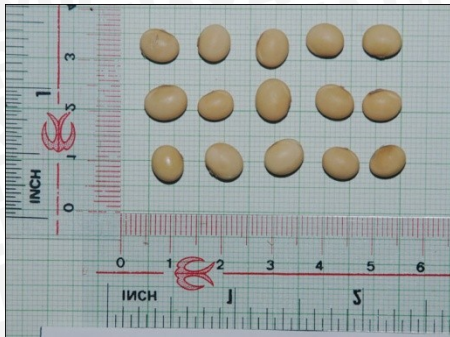
G4 {16NB#ANJ(500)(2/16)S}



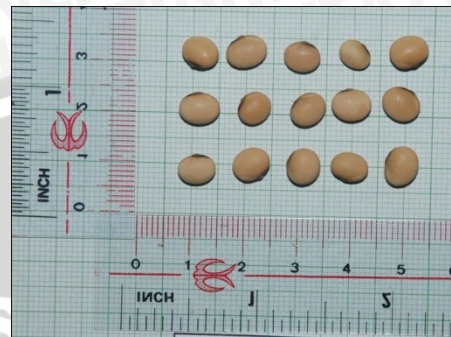
G5 {17NB#ANJ(1000)(1/5)S}



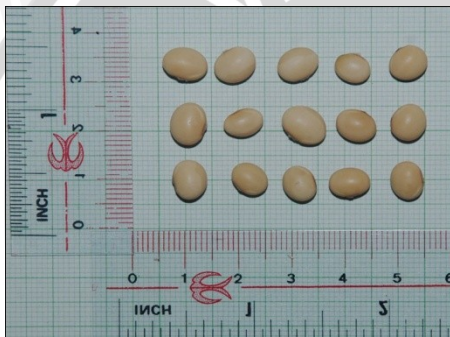
G6 {26NB#ANJ(500)(1/11)S}



G7{33NB#ANJ(500)(2/3)S}





G8{Kaba}









G9{Anjasmoro}

Perbandingan Warna Biji

Perbandingan Bentuk Biji

	Kuning : G1, G3, G4, G5, G6, G7, G9
	Coklat Muda : G2, G8

Bulat :		
G1		
Bulat Pipih :		
G2, G8		
Lonjong :		
G3, G4, G5, G6, G7, G9		