

## Lampiran 1

## PERNYATAAN KEASLIAN TULISAN

Saya yang bertanda tangan di bawah ini:

Nama : Hirvinda Giovanni Sucipto  
NIM : 135070400111027  
Program Studi : Sarjana Kedokteran Gigi  
Fakultas Kedokteran Gigi Universitas Brawijaya

menyatakan dengan sebenarnya bahwa Skripsi yang saya tulis ini benar-benar hasil karya saya sendiri, bukan merupakan pengambilan tulisan atau pikiran orang lain yang saya akui sebagai tulisan atau pikiran saya sendiri. Apabila di kemudian hari dapat dibuktikan bahwa skripsi ini adalah jiplakan, maka saya bersedia menerima sanksi atas perbuatan tersebut.

Malang, 19 Desember 2016

Yang membuat pernyataan,

Hirvinda Giovanni Sucipto

NIM. 135070400111027

## Lampiran 2



**DINAS KESEHATAN PROPINSI JAWA TIMUR**  
**UPT MATERIA MEDICA BATU**  
 Jalan Lahor No.87 Telp. (0341) 593396 Batu (65313)  
**KOTA BATU**

Nomor : 074 / 227 / 101.8 / VIII / 2016  
 Sifat : Biasa  
 Perihal : **Determinasi Tanaman Srikaya**

Memenuhi permohonan saudara :

Nama : HIRVINDA GIOVANNI SUCIPTO  
 NIM : 135070400111027  
 Fakultas : FAKULTAS KEDOKTERAN GIGI, JURUSAN PENDIDIKAN DOKTER GIGI  
 UNIVERSITAS BRAWIJAYA MALANG

1. Perihal determinasi tanaman srikaya

Kingdom : Plantae (Tumbuhan)  
 Subkingdom : Tracheobionta (Tumbuhan berpembuluh)  
 Super Divisi : Spermatophyta (Menghasilkan biji)  
 Divisi : Magnoliophyta (Tumbuhan berbunga)  
 Kelas : Dicotyledonae  
 Bangsa : Ranunculales  
 Suku : Annonaceae  
 Marga : Annona  
 Jenis : *Annona squamosa* L.  
 Nama Daerah : Sumatera: delima bintang, serba bintang, sarikaya, seraikaya. Jawa: sarikaya, srikaya, serkaya, surikaya, srikawis, sarkaja, serakaja, sirikaja. Kalimantan: sarikaya. Nusa Tenggara: sirkaya, srikaya, garoso, ata. Sulawesi: atis soe walanda, sirikaya, sirikaja, perse, atis, delima srikaya, srikaya. Maluku: atisi, hirikaya, atis.

Kunci determinasi : 1b-2b-3b-4b-6b-7b-9b-10b-11b-12b-13b-14a-15a-109b-119b-120b-128b-129b-135b-136b-139b-140b-142b-143b-146b-154b-155b-156b-162b-163a-164b-165b-166a-1a.

2. Morfologi : Habitus: Pohon atau perdu, tinggi ± 7 m. Batang: Berkayu, bulat, bercabang, coklat kotor. Daun: Tunggal, bulat telur atau lanset, ujung tumpul, pangkal meruncing, tepi rata, panjang 6-17 cm, lebar 2,5-7,5 cm, pertulangan menyirip, hijau keputih-putihan hijau. Bunga: Tunggal, bentuk lonceng, kelopak segi tiga, kecil benang sari banyak, putih, tangkai sari panjang, kepala putik menyatu, bakal buah banyak dan mudah rontok, mahkota berdaging tebal, panjang 2-2,5 cm, putih kekuningan. Buah: Buni, majemuk, bulat, berbongkol-bongkol, diameter 5-10 cm, dilapisi lilin, hijau. Biji: Bulat telur, hitam. Akar: Tunggang, bulat, kecoklatan.

3. Nama Simplisia : Squamosae Folium / daun srikaya

4. Kandungan : Alkaloid tipe asporfin (anonain) dan bisbenziltetrahydroisokinolin (retikulin). Daun mengandung alkaloid tetrahydro isokinolin, p-hidroksibenzil-6,7-dihidroksi- 1,2,3,4-tetrahydroisokinolin (demetiloklaurin = higenamin).

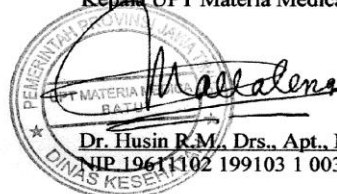
5. Penggunaan : Penelitian (Tugas Akhir).

6. Daftar Pustaka

- Anonim. 2010. <http://www.ipteknet.co.id/srikaya>.
- Anonim. 2010. <http://www.plantamor.com/srikaya>.
- Anonim. 2010. <http://www.warintek.ristek.go.id/srikaya>.
- Syamsuhidayat, Sri Sugati dan Johny Ria Hutapea. 1991. *Inventaris Tanaman Obat Indonesia I*. Departemen Kesehatan Republik Indonesia: Badan Penelitian dan Pengembangan Kesehatan.
- Van Steenis, CGGJ. 2008. *FLORA: untuk Sekolah di Indonesia*. Pradnya Paramita, Jakarta.

Demikian surat keterangan determinasi ini kami buat untuk dipergunakan sebagaimana mestinya.

Batu, 01 Agustus 2016  
 Kepala UPT Materia Medica Batu

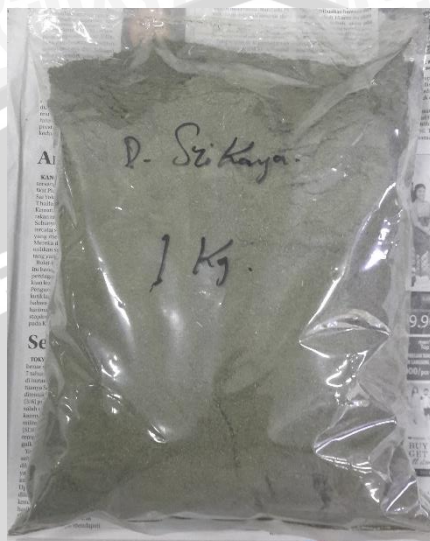


Dr. Husin R.M., Drs., Apt., M.Kes.  
 NIP.19611102 199103 1 003

**Determinasi Tanaman Srikaya**



### Lampiran 3 Alat dan Bahan Penelitian



Serbuk Daun Srikaya



Proses Ekstraksi Daun Srikaya dengan Metode Maserasi



Oven untuk menguapkan pelarut pada hasil ekstrak

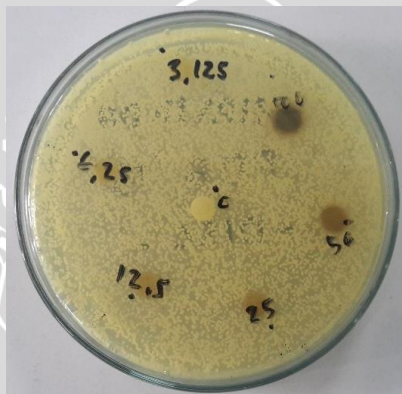




Lampiran 4  
Hasil Penelitian



Hasil Ekstrak Etanol Daun Srikaya  
(dalam wadah plastik transparan)



Hasil Penelitian Pendahuluan dengan Metode Difusi Cakram/Disk



Hasil Penelitian Pendahuluan dengan Metode Difusi Sumuran

Lampiran 5  
Uji Normalitas

Tests of Normality

	Kolmogorov-Smirnov <sup>a</sup>			Shapiro-Wilk		
	Statistic	df	Sig.	Statistic	df	Sig.
Koloni Jamur	.296	32	.000	.769	32	.000

a. Lilliefors Significance Correction



Lampiran 6

Uji Non-Parametrik Kruskal-Wallis

NPar Tests

Kruskal-Wallis Test

Ranks

	Kelompok	N	Mean Rank
Koloni Jamur	K Neg	4	30.00
	K Pos	4	8.50
	2%	4	27.00
	4%	4	22.50
	6%	4	18.50
	8%	4	8.50
	10%	4	8.50
	12%	4	8.50
	Total		32

Test Statistics<sup>a,b</sup>

	Koloni Jamur
Chi-Square	30.843
df	7
Asymp. Sig.	.000

a. Kruskal Wallis Test

b. Grouping Variable: Kelompok



Lampiran 7  
Uji Korelasi Spearman

Correlations

		Konsentrasi	Koloni Jamur
Spearman's rho	Konsentrasi	1.000	-.960**
	Correlation Coefficient		
	Sig. (2-tailed)	.	.000
	N	28	28
Koloni Jamur	Correlation Coefficient	-.960**	1.000
	Sig. (2-tailed)	.000	.
	N	28	28

\*\* . Correlation is significant at the .01 level (2-tailed).





Lampiran 8  
Uji Non-Parametrik Mann-Whitney

NPar Tests

Mann-Whitney Test

Ranks

	Kelompok	N	Mean Rank	Sum of Ranks
Koloni Jamur	K Neg	4	6.50	26.00
	K Pos	4	2.50	10.00
	Total	8		

Test Statistics<sup>b</sup>

	Koloni Jamur
Mann-Whitney U	.000
Wilcoxon W	10.000
Z	-2.646
Asymp. Sig. (2-tailed)	.008
Exact Sig. [2*(1-tailed Sig.)]	.029 <sup>a</sup>

a. Not corrected for ties.

b. Grouping Variable: Kelompok

NPar Tests

Mann-Whitney Test

Ranks

	Kelompok	N	Mean Rank	Sum of Ranks
Koloni Jamur	K Neg	4	6.00	24.00
	2%	4	3.00	12.00
	Total	8		

**Test Statistics<sup>b</sup>**

	Koloni Jamur
Mann-Whitney U	2.000
Wilcoxon W	12.000
Z	-2.049
Asymp. Sig. (2-tailed)	.040
Exact Sig. [2*(1-tailed Sig.)]	.114 <sup>a</sup>

a. Not corrected for ties.

b. Grouping Variable: Kelompok

**NPar Tests**

**Mann-Whitney Test**

**Ranks**

	Kelompok	N	Mean Rank	Sum of Ranks
Koloni Jamur	K Neg	4	6.50	26.00
	4%	4	2.50	10.00
	Total	8		

**Test Statistics<sup>b</sup>**

	Koloni Jamur
Mann-Whitney U	.000
Wilcoxon W	10.000
Z	-2.646
Asymp. Sig. (2-tailed)	.008
Exact Sig. [2*(1-tailed Sig.)]	.029 <sup>a</sup>

a. Not corrected for ties.

b. Grouping Variable: Kelompok



NPar Tests

Mann-Whitney Test

Ranks

	Kelompok	N	Mean Rank	Sum of Ranks
Koloni Jamur	K Neg	4	6.50	26.00
	6%	4	2.50	10.00
	Total	8		

Test Statistics<sup>b</sup>

	Koloni Jamur
Mann-Whitney U	.000
Wilcoxon W	10.000
Z	-2.646
Asymp. Sig. (2-tailed)	.008
Exact Sig. [2*(1-tailed Sig.)]	.029 <sup>a</sup>

a. Not corrected for ties.

b. Grouping Variable: Kelompok

NPar Tests

Mann-Whitney Test

Ranks

	Kelompok	N	Mean Rank	Sum of Ranks
Koloni Jamur	K Neg	4	6.50	26.00
	8%	4	2.50	10.00
	Total	8		

Test Statistics<sup>b</sup>

	Koloni Jamur
Mann-Whitney U	.000
Wilcoxon W	10.000
Z	-2.646
Asymp. Sig. (2-tailed)	.008
Exact Sig. [2*(1-tailed Sig.)]	.029 <sup>a</sup>

a. Not corrected for ties.

b. Grouping Variable: Kelompok





NPar Tests

Mann-Whitney Test

Ranks

	Kelompok	N	Mean Rank	Sum of Ranks
Koloni Jamur	K Neg	4	6.50	26.00
	10%	4	2.50	10.00
	Total	8		

Test Statistics<sup>b</sup>

	Koloni Jamur
Mann-Whitney U	.000
Wilcoxon W	10.000
Z	-2.646
Asymp. Sig. (2-tailed)	.008
Exact Sig. [2*(1-tailed Sig.)]	.029 <sup>a</sup>

a. Not corrected for ties.

b. Grouping Variable: Kelompok

NPar Tests

Mann-Whitney Test

Ranks

	Kelompok	N	Mean Rank	Sum of Ranks
Koloni Jamur	K Neg	4	6.50	26.00
	12%	4	2.50	10.00
	Total	8		

Test Statistics<sup>b</sup>

	Koloni Jamur
Mann-Whitney U	.000
Wilcoxon W	10.000
Z	-2.646
Asymp. Sig. (2-tailed)	.008
Exact Sig. [2*(1-tailed Sig.)]	.029 <sup>a</sup>

a. Not corrected for ties.

b. Grouping Variable: Kelompok



NPar Tests

Mann-Whitney Test

Ranks

	Kelompok	N	Mean Rank	Sum of Ranks
Koloni Jamur	K Pos	4	2.50	10.00
	2%	4	6.50	26.00
	Total	8		

Test Statistics<sup>b</sup>

	Koloni Jamur
Mann-Whitney U	.000
Wilcoxon W	10.000
Z	-2.530
Asymp. Sig. (2-tailed)	.011
Exact Sig. [2*(1-tailed Sig.)]	.029 <sup>a</sup>

a. Not corrected for ties.

b. Grouping Variable: Kelompok

NPar Tests

Mann-Whitney

Ranks

	Kelompok	N	Mean Rank	Sum of Ranks
Koloni Jamur	K Pos	4	2.50	10.00
	4%	4	6.50	26.00
	Total	8		

Test

Test Statistics<sup>b</sup>

	Koloni Jamur
Mann-Whitney U	.000
Wilcoxon W	10.000
Z	-2.646
Asymp. Sig. (2-tailed)	.008
Exact Sig. [2*(1-tailed Sig.)]	.029 <sup>a</sup>

a. Not corrected for ties.

b. Grouping Variable: Kelompok

NPar Tests

Mann-Whitney Test

Ranks

	Kelompok	N	Mean Rank	Sum of Ranks
Koloni Jamur	K Pos	4	2.50	10.00
	6%	4	6.50	26.00
	Total	8		

Test Statistics<sup>b</sup>

	Koloni Jamur
Mann-Whitney U	.000
Wilcoxon W	10.000
Z	-2.646
Asymp. Sig. (2-tailed)	.008
Exact Sig. [2*(1-tailed Sig.)]	.029 <sup>a</sup>

a. Not corrected for ties.

b. Grouping Variable: Kelompok

NPar Tests

Mann-Whitney Test

Ranks

	Kelompok	N	Mean Rank	Sum of Ranks
Koloni Jamur	K Pos	4	4.50	18.00
	8%	4	4.50	18.00
	Total	8		

Test Statistics<sup>b</sup>

	Koloni Jamur
Mann-Whitney U	8.000
Wilcoxon W	18.000
Z	.000
Asymp. Sig. (2-tailed)	1.000
Exact Sig. [2*(1-tailed Sig.)]	1.000 <sup>a</sup>

a. Not corrected for ties.

b. Grouping Variable: Kelompok





NPar Tests

Mann-Whitney Test

Ranks

	Kelompok	N	Mean Rank	Sum of Ranks
Koloni Jamur	K Pos	4	4.50	18.00
	10%	4	4.50	18.00
	Total	8		

Test Statistics<sup>b</sup>

	Koloni Jamur
Mann-Whitney U	8.000
Wilcoxon W	18.000
Z	.000
Asymp. Sig. (2-tailed)	1.000
Exact Sig. [2*(1-tailed Sig.)]	1.000 <sup>a</sup>

a. Not corrected for ties.

b. Grouping Variable: Kelompok

NPar Tests

Mann-Whitney Test

Ranks

	Kelompok	N	Mean Rank	Sum of Ranks
Koloni Jamur	K Pos	4	4.50	18.00
	12%	4	4.50	18.00
	Total	8		

Test Statistics<sup>b</sup>

	Koloni Jamur
Mann-Whitney U	8.000
Wilcoxon W	18.000
Z	.000
Asymp. Sig. (2-tailed)	1.000
Exact Sig. [2*(1-tailed Sig.)]	1.000 <sup>a</sup>

a. Not corrected for ties.

b. Grouping Variable: Kelompok



NPar Tests

Mann-Whitney Test

Ranks

	Kelompok	N	Mean Rank	Sum of Ranks
Koloni Jamur	2%	4	6.50	26.00
	4%	4	2.50	10.00
	Total	8		

Test Statistics<sup>b</sup>

	Koloni Jamur
Mann-Whitney U	.000
Wilcoxon W	10.000
Z	-2.530
Asymp. Sig. (2-tailed)	.011
Exact Sig. [2*(1-tailed Sig.)]	.029 <sup>a</sup>

a. Not corrected for ties.

b. Grouping Variable: Kelompok

NPar Tests

Mann-Whitney Test

Ranks

	Kelompok	N	Mean Rank	Sum of Ranks
Koloni Jamur	2%	4	6.50	26.00
	6%	4	2.50	10.00
	Total	8		

Test Statistics<sup>b</sup>

	Koloni Jamur
Mann-Whitney U	.000
Wilcoxon W	10.000
Z	-2.530
Asymp. Sig. (2-tailed)	.011
Exact Sig. [2*(1-tailed Sig.)]	.029 <sup>a</sup>

a. Not corrected for ties.

b. Grouping Variable: Kelompok



NPar Tests

Mann-Whitney Test

Ranks

	Kelompok	N	Mean Rank	Sum of Ranks
Koloni Jamur	2%	4	6.50	26.00
	8%	4	2.50	10.00
	Total	8		

Test Statistics<sup>b</sup>

	Koloni Jamur
Mann-Whitney U	.000
Wilcoxon W	10.000
Z	-2.530
Asymp. Sig. (2-tailed)	.011
Exact Sig. [2*(1-tailed Sig.)]	.029 <sup>a</sup>

a. Not corrected for ties.

b. Grouping Variable: Kelompok

NPar Tests

Mann-Whitney Test

Ranks

	Kelompok	N	Mean Rank	Sum of Ranks
Koloni Jamur	2%	4	6.50	26.00
	10%	4	2.50	10.00
	Total	8		

Test Statistics<sup>b</sup>

	Koloni Jamur
Mann-Whitney U	.000
Wilcoxon W	10.000
Z	-2.530
Asymp. Sig. (2-tailed)	.011
Exact Sig. [2*(1-tailed Sig.)]	.029 <sup>a</sup>

a. Not corrected for ties.

b. Grouping Variable: Kelompok





NPar Tests

Mann-Whitney Test

Ranks

	Kelompok	N	Mean Rank	Sum of Ranks
Koloni Jamur	2%	4	6.50	26.00
	12%	4	2.50	10.00
	Total	8		

Test Statistics<sup>b</sup>

	Koloni Jamur
Mann-Whitney U	.000
Wilcoxon W	10.000
Z	-2.530
Asymp. Sig. (2-tailed)	.011
Exact Sig. [2*(1-tailed Sig.)]	.029 <sup>a</sup>

a. Not corrected for ties.

b. Grouping Variable: Kelompok

NPar Tests

Mann-Whitney Test

Ranks

	Kelompok	N	Mean Rank	Sum of Ranks
Koloni Jamur	4%	4	6.50	26.00
	6%	4	2.50	10.00
	Total	8		

Test Statistics<sup>b</sup>

	Koloni Jamur
Mann-Whitney U	.000
Wilcoxon W	10.000
Z	-2.646
Asymp. Sig. (2-tailed)	.008
Exact Sig. [2*(1-tailed Sig.)]	.029 <sup>a</sup>

a. Not corrected for ties.

b. Grouping Variable: Kelompok



NPar Tests

Mann-Whitney Test

Ranks

	Kelompok	N	Mean Rank	Sum of Ranks
Koloni Jamur	4%	4	6.50	26.00
	8%	4	2.50	10.00
	Total	8		

Test Statistics<sup>b</sup>

	Koloni Jamur
Mann-Whitney U	.000
Wilcoxon W	10.000
Z	-2.646
Asymp. Sig. (2-tailed)	.008
Exact Sig. [2*(1-tailed Sig.)]	.029 <sup>a</sup>

a. Not corrected for ties.

b. Grouping Variable: Kelompok

NPar Tests

Mann-Whitney Test

Ranks

	Kelompok	N	Mean Rank	Sum of Ranks
Koloni Jamur	4%	4	6.50	26.00
	10%	4	2.50	10.00
	Total	8		

Test Statistics<sup>b</sup>

	Koloni Jamur
Mann-Whitney U	.000
Wilcoxon W	10.000
Z	-2.646
Asymp. Sig. (2-tailed)	.008
Exact Sig. [2*(1-tailed Sig.)]	.029 <sup>a</sup>

a. Not corrected for ties.

b. Grouping Variable: Kelompok



NPar Tests

Mann-Whitney Test

Ranks

	Kelompok	N	Mean Rank	Sum of Ranks
Koloni Jamur	4%	4	6.50	26.00
	12%	4	2.50	10.00
	Total	8		

Test Statistics<sup>b</sup>

	Koloni Jamur
Mann-Whitney U	.000
Wilcoxon W	10.000
Z	-2.646
Asymp. Sig. (2-tailed)	.008
Exact Sig. [2*(1-tailed Sig.)]	.029 <sup>a</sup>

a. Not corrected for ties.

b. Grouping Variable: Kelompok

NPar Tests

Mann-Whitney Test

Ranks

	Kelompok	N	Mean Rank	Sum of Ranks
Koloni Jamur	6%	4	6.50	26.00
	8%	4	2.50	10.00
	Total	8		

Test Statistics<sup>b</sup>

	Koloni Jamur
Mann-Whitney U	.000
Wilcoxon W	10.000
Z	-2.646
Asymp. Sig. (2-tailed)	.008
Exact Sig. [2*(1-tailed Sig.)]	.029 <sup>a</sup>

a. Not corrected for ties.

b. Grouping Variable: Kelompok





NPar Tests

Mann-Whitney Test

Ranks

	Kelompok	N	Mean Rank	Sum of Ranks
Koloni Jamur	6%	4	6.50	26.00
	10%	4	2.50	10.00
	Total	8		

Test Statistics<sup>b</sup>

	Koloni Jamur
Mann-Whitney U	.000
Wilcoxon W	10.000
Z	-2.646
Asymp. Sig. (2-tailed)	.008
Exact Sig. [2*(1-tailed Sig.)]	.029 <sup>a</sup>

a. Not corrected for ties.

b. Grouping Variable: Kelompok

NPar Tests

Mann-Whitney Test

Ranks

	Kelompok	N	Mean Rank	Sum of Ranks
Koloni Jamur	6%	4	6.50	26.00
	12%	4	2.50	10.00
	Total	8		

Test Statistics<sup>b</sup>

	Koloni Jamur
Mann-Whitney U	.000
Wilcoxon W	10.000
Z	-2.646
Asymp. Sig. (2-tailed)	.008
Exact Sig. [2*(1-tailed Sig.)]	.029 <sup>a</sup>

a. Not corrected for ties.

b. Grouping Variable: Kelompok



NPar Tests

Mann-Whitney Test

Ranks

	Kelompok	N	Mean Rank	Sum of Ranks
Koloni Jamur	8%	4	4.50	18.00
	10%	4	4.50	18.00
	Total	8		

Test Statistics<sup>b</sup>

	Koloni Jamur
Mann-Whitney U	8.000
Wilcoxon W	18.000
Z	.000
Asymp. Sig. (2-tailed)	1.000
Exact Sig. [2*(1-tailed Sig.)]	1.000 <sup>a</sup>

a. Not corrected for ties.

b. Grouping Variable: Kelompok

NPar Tests

Mann-Whitney Test

Ranks

	Kelompok	N	Mean Rank	Sum of Ranks
Koloni Jamur	8%	4	4.50	18.00
	12%	4	4.50	18.00
	Total	8		

Test Statistics<sup>b</sup>

	Koloni Jamur
Mann-Whitney U	8.000
Wilcoxon W	18.000
Z	.000
Asymp. Sig. (2-tailed)	1.000
Exact Sig. [2*(1-tailed Sig.)]	1.000 <sup>a</sup>

a. Not corrected for ties.

b. Grouping Variable: Kelompok



NPar Tests

Mann-Whitney Test

Ranks

	Kelompok	N	Mean Rank	Sum of Ranks
Koloni Jamur	10%	4	4.50	18.00
	12%	4	4.50	18.00
	Total	8		

Test Statistics<sup>b</sup>

	Koloni Jamur
Mann-Whitney U	8.000
Wilcoxon W	18.000
Z	.000
Asymp. Sig. (2-tailed)	1.000
Exact Sig. [2*(1-tailed Sig.)]	1.000 <sup>a</sup>

a. Not corrected for ties.

b. Grouping Variable: Kelompok

