

Lampiran 1. Pernyataan Keaslian Tulisan**PERNYATAAN KEASLIAN TULISAN**

Saya yang bertanda tangan di bawah ini :

Nama : Pipit Sulistiyani

NIM : 105070500111012

Program Studi : Program Studi Farmasi Fakultas Kedokteran Universitas
Brawijaya

Menyatakan dengan sebenarnya bahwa Tugas Akhir yang saya tulis ini benar-benar hasil karya sendiri, bukan merupakan pengambilalihan tulisan atau pikiran orang lain yang saya akui sebagai tulisan atau pikiran saya sendiri. Apabila dikemudian hari dapat dibuktikan bahwa Tugas Akhir ini adalah hasil jiplakan, maka saya bersedia menerima sanksi atas perbuatan tersebut.

Malang, 26 Juni 2014

Pipit Sulistiyani
105070500111012

Lampiran 2. Hasil Uji Statistik SPSS Ukuran Partikel antara F1 dan F2

Tests of Normality

	Formula	Kolmogorov-Smirnov ^a			Shapiro-Wilk		
		Statistic	Df	Sig.	Statistic	df	Sig.
ukuran Partikel	Formula 1	.238	3	.	.976	3	.703
	Formula 2	.302	3	.	.910	3	.417

a. Lilliefors Significance Correction

Independent Samples Test

	Levene's Test for Equality of Variances		t-test for Equality of Means							
	F	Sig.	T	df	Sig. (2-tailed)	Mean Difference	Std. Error Difference	95% Confidence Interval of the Difference		
								Lower	Upper	
ukuran Partikel	Equal variances assumed	7.555	.051	96.564	4	.000	1.30332167	.01349697	1.34079527	1.26584806
	Equal variances not assumed			96.564	2.109	.000	1.30332167	.01349697	1.35861149	1.24803185



Lampiran 3. Hasil Uji Statistik SPSS Ukuran Partikel Hari ke-1 sampai Hari ke-14

Tests of Normality

	Minggu ke	Kolmogorov-Smirnov ^a			Shapiro-Wilk		
		Statistic	Df	Sig.	Statistic	df	Sig.
Formula 1	Minggu ke-0	.349	5	.046	.800	5	.080
	Minggu ke-1	.314	5	.121	.824	5	.125
	Minggu ke-2	.237	5	.200*	.927	5	.578
Formula 2	Minggu ke-0	.173	5	.200*	.975	5	.904
	Minggu ke-1	.218	5	.200*	.960	5	.810
	Minggu ke-2	.226	5	.200*	.921	5	.536

*. This is a lower bound of the true significance.

a. Lilliefors Significance Correction

Test of Homogeneity of Variances

	Levene Statistic	df1	df2	Sig.
Formula 1	3.206	2	12	.077
Formula 2	.252	2	12	.781

ANOVA

		Sum of Squares	df	Mean Square	F	Sig.
Formula 1	Between Groups	.000	2	.000	.973	.406
	Within Groups	.001	12	.000		
	Total	.001	14			
Formula 2	Between Groups	.005	2	.003	.104	.902
	Within Groups	.308	12	.026		
	Total	.313	14			



Post Hoc Tests

Multiple Comparisons

Tukey HSD

Dependent Variable	(I) Minggu ke	(J) Minggu ke	Mean Difference (I-J)	Std. Error	Sig.	95% Confidence Interval	
						Lower Bound	Upper Bound
Formula 1	Minggu ke-0	Minggu ke-1	.00312000	.00417491	.741	-.0080181	.0142581
		Minggu ke-2	-.00270000	.00417491	.798	-.0138381	.0084381
	Minggu ke-1	Minggu ke-0	-.00312000	.00417491	.741	-.0142581	.0080181
		Minggu ke-2	-.00582000	.00417491	.374	-.0169581	.0053181
	Minggu ke-2	Minggu ke-0	.00270000	.00417491	.798	-.0084381	.0138381
		Minggu ke-1	.00582000	.00417491	.374	-.0053181	.0169581
Formula 2	Minggu ke-0	Minggu ke-1	.03400000	.10130482	.940	-.23626745	.30426745
		Minggu ke-2	-.01000000	.10130482	.995	-.28026745	.26026745
	Minggu ke-1	Minggu ke-0	-.03400000	.10130482	.940	-.30426745	.23626745
		Minggu ke-2	-.04400000	.10130482	.902	-.31426745	.22626745
	Minggu ke-2	Minggu ke-0	.01000000	.10130482	.995	-.26026745	.28026745
		Minggu ke-1	.04400000	.10130482	.902	-.22626745	.31426745



Lampiran 4. Hasil Uji Statistik SPSS pH antara F1 dan F2

Tests of Normality							
	Formula	Kolmogorov-Smirnov ^a			Shapiro-Wilk		
		Statistic	df	Sig.	Statistic	df	Sig.
pH	Formula 1	.214	14	.082	.907	14	.144
	Formula 2	.225	14	.053	.907	14	.144

a. Lilliefors Significance Correction

Independent Samples Test										
	Levene's Test for Equality of Variances		t-test for Equality of Means							
	F	Sig.	t	Df	Sig. (2-tailed)	Mean Difference	Std. Error Difference	95% Confidence Interval of the Difference		
								Lower	Upper	
pH	Equal variances assumed	.423	.521	246.475	26	.000	.409286	.001661	.412699	.405872
	Equal variances not assumed			246.475	25.98	.000	.409286	.001661	.412702	.405870

Lampiran 5. Hasil Uji Statistik SPSS pH selama Penyimpanan

F1														
Hari ke-	1	2	3	4	5	6	7	8	9	10	11	12	13	14
	5,225	5,223	5,234	5,229	5,231	5,226	5,229	5,232	5,235	5,228	5,233	5,225	5,227	5,229
	5,224	5,221	5,232	5,227	5,230	5,228	5,230	5,235	5,237	5,221	5,236	5,223	5,226	5,225
	5,226	5,222	5,233	5,225	5,225	5,225	5,231	5,236	5,231	5,224	5,234	5,227	5,229	5,226
rata-rata	5,225	5,222	5,233	5,227	5,226	5,226	5,230	5,234	5,234	5,224	5,234	5,225	5,227	5,227
SD	0,001	0,001	0,001	0,002	0,001	0,001	0,001	0,002	0,003	0,003	0,002	0,002	0,002	0,002

F2														
Hari ke-	1	2	3	4	5	6	7	8	9	10	11	12	13	14
	5,641	5,632	5,649	5,641	5,640	5,639	5,635	5,640	5,641	5,635	5,637	5,633	5,634	5,634
	5,645	5,632	5,647	5,644	5,640	5,636	5,634	5,640	5,644	5,632	5,632	5,631	5,636	5,633
	5,643	5,632	5,644	5,643	5,640	5,637	5,636	5,640	5,642	5,634	5,635	5,635	5,633	5,635
rata-rata	5,643	5,632	5,647	5,643	5,640	5,637	5,635	5,640	5,642	5,634	5,635	5,633	5,634	5,634
SD	0,002	0,000	0,003	0,002	0,000	0,002	0,001	0,000	0,002	0,002	0,003	0,002	0,002	0,001

Tests of Normality^{b,c,d}

	Hari	Kolmogorov-Smirnov ^a			Shapiro-Wilk		
		Statistic	df	Sig.	Statistic	df	Sig.
Formula 1	Hari 1	.175	3	.	1.000	3	1.000
	Hari 2	.175	3	.	1.000	3	1.000
	Hari 3	.175	3	.	1.000	3	1.000
	Hari 4	.175	3	.	1.000	3	1.000
	Hari 5	.253	3	.	.964	3	.637
	Hari 6	.253	3	.	.964	3	.637
	Hari 7	.175	3	.	1.000	3	1.000
	Hari 8	.292	3	.	.923	3	.463
	Hari 9	.253	3	.	.964	3	.637
	Hari 10	.204	3	.	.993	3	.843

	Hari 11	.253	3	.964	3	.637
	Hari 12	.175	3	1.000	3	1.000
	Hari 13	.253	3	.964	3	.637
	Hari 14	.292	3	.923	3	.463
	Hari 1	.175	3	1.000	3	1.000
	Hari 3	.219	3	.987	3	.780
	Hari 4	.253	3	.964	3	.637
	Hari 6	.253	3	.964	3	.637
	Hari 7	.175	3	1.000	3	1.000
Formula 2	Hari 9	.253	3	.964	3	.637
	Hari 10	.253	3	.964	3	.637
	Hari 11	.219	3	.987	3	.780
	Hari 12	.175	3	1.000	3	1.000
	Hari 13	.253	3	.964	3	.637
	Hari 14	.175	3	1.000	3	1.000

- a. Lilliefors Significance Correction
- b. Formula 2 is constant when Hari = Hari 2. It has been omitted.
- c. Formula 2 is constant when Hari = Hari 5. It has been omitted.
- d. Formula 2 is constant when Hari = Hari 8. It has been omitted.

Test of Homogeneity of Variances

	Levene Statistic	df1	df2	Sig.
Formula 1	1.026	13	28	.456
Formula 2	1.687	13	28	.120

ANOVA

		Sum of Squares	df	Mean Square	F	Sig.
Formula 1	Between Groups	.001	13	.000	14.264	.000
	Within Groups	.000	28	.000		
	Total	.001	41			
Formula 2	Between Groups	.001	13	.000	26.127	.000
	Within Groups	.000	28	.000		
	Total	.001	41			



Post Hoc Tests

Multiple Comparisons

Tukey HSD

Dependent Variable	(I) Hari	(J) Hari	Mean Difference (I-J)	Std. Error	Sig.	95% Confidence Interval	
						Lower Bound	Upper Bound
Formula 1	Hari 1	Hari 2	.003000	.001569	.803	-.00274	.00874
		Hari 3	-.008000*	.001569	.001	-.01374	-.00226
		Hari 4	-.002000	.001569	.988	-.00774	.00374
		Hari 5	-.006333*	.001569	.021	-.01207	-.00059
		Hari 6	-.001333	.001569	1.000	-.00707	.00441
		Hari 7	-.005000	.001569	.137	-.01074	.00074
		Hari 8	-.009333*	.001569	.000	-.01507	-.00359
		Hari 9	-.009333*	.001569	.000	-.01507	-.00359
		Hari 10	.000667	.001569	1.000	-.00507	.00641
		Hari 11	-.009333*	.001569	.000	-.01507	-.00359
		Hari 12	.000000	.001569	1.000	-.00574	.00574
		Hari 13	-.002333	.001569	.959	-.00807	.00341
		Hari 14	-.001667	.001569	.998	-.00741	.00407
		Hari 1	-.003000	.001569	.803	-.00874	.00274
	Hari 3	-.011000*	.001569	.000	-.01674	-.00526	
	Hari 4	-.005000	.001569	.137	-.01074	.00074	
	Hari 5	-.009333*	.001569	.000	-.01507	-.00359	
	Hari 6	-.004333	.001569	.297	-.01007	.00141	
	Hari 7	-.008000*	.001569	.001	-.01374	-.00226	
	Hari 2	Hari 8	-.012333*	.001569	.000	-.01807	-.00659
	Hari 9	-.012333*	.001569	.000	-.01807	-.00659	
Hari 10	-.002333	.001569	.959	-.00807	.00341		
Hari 11	-.012333*	.001569	.000	-.01807	-.00659		
Hari 12	-.003000	.001569	.803	-.00874	.00274		
Hari 13	-.005333	.001569	.089	-.01107	.00041		
Hari 14	-.004667	.001569	.206	-.01041	.00107		
Hari 3	Hari 1	.008000*	.001569	.001	.00226	.01374	



	Hari 2	.011000*	.001569	.000	.00526	.01674
	Hari 4	.006000*	.001569	.034	.00026	.01174
	Hari 5	.001667	.001569	.998	-.00407	.00741
	Hari 6	.006667*	.001569	.012	.00093	.01241
	Hari 7	.003000	.001569	.803	-.00274	.00874
	Hari 8	-.001333	.001569	1.000	-.00707	.00441
	Hari 9	-.001333	.001569	1.000	-.00707	.00441
	Hari 10	.008667*	.001569	.000	.00293	.01441
	Hari 11	-.001333	.001569	1.000	-.00707	.00441
	Hari 12	.008000*	.001569	.001	.00226	.01374
	Hari 13	.005667	.001569	.056	-.00007	.01141
	Hari 14	.006333*	.001569	.021	.00059	.01207
	Hari 1	.002000	.001569	.988	-.00374	.00774
	Hari 2	.005000	.001569	.137	-.00074	.01074
	Hari 3	-.006000*	.001569	.034	-.01174	-.00026
	Hari 5	-.004333	.001569	.297	-.01007	.00141
	Hari 6	.000667	.001569	1.000	-.00507	.00641
	Hari 7	-.003000	.001569	.803	-.00874	.00274
Hari 4	Hari 8	-.007333*	.001569	.004	-.01307	-.00159
	Hari 9	-.007333*	.001569	.004	-.01307	-.00159
	Hari 10	.002667	.001569	.899	-.00307	.00841
	Hari 11	-.007333*	.001569	.004	-.01307	-.00159
	Hari 12	.002000	.001569	.988	-.00374	.00774
	Hari 13	-.000333	.001569	1.000	-.00607	.00541
	Hari 14	.000333	.001569	1.000	-.00541	.00607
	Hari 1	.006333*	.001569	.021	.00059	.01207
	Hari 2	.009333*	.001569	.000	.00359	.01507
	Hari 3	-.001667	.001569	.998	-.00741	.00407
	Hari 4	.004333	.001569	.297	-.00141	.01007
Hari 5	Hari 6	.005000	.001569	.137	-.00074	.01074
	Hari 7	.001333	.001569	1.000	-.00441	.00707
	Hari 8	-.003000	.001569	.803	-.00874	.00274
	Hari 9	-.003000	.001569	.803	-.00874	.00274
	Hari 10	.007000*	.001569	.007	.00126	.01274
	Hari 11	-.003000	.001569	.803	-.00874	.00274

	Hari 12	.006333*	.001569	.021	.00059	.01207
	Hari 13	.004000	.001569	.412	-.00174	.00974
	Hari 14	.004667	.001569	.206	-.00107	.01041
	Hari 1	.001333	.001569	1.000	-.00441	.00707
	Hari 2	.004333	.001569	.297	-.00141	.01007
	Hari 3	-.006667*	.001569	.012	-.01241	-.00093
	Hari 4	-.000667	.001569	1.000	-.00641	.00507
	Hari 5	-.005000	.001569	.137	-.01074	.00074
	Hari 7	-.003667	.001569	.544	-.00941	.00207
Hari 6	Hari 8	-.008000*	.001569	.001	-.01374	-.00226
	Hari 9	-.008000*	.001569	.001	-.01374	-.00226
	Hari 10	.002000	.001569	.988	-.00374	.00774
	Hari 11	-.008000*	.001569	.001	-.01374	-.00226
	Hari 12	.001333	.001569	1.000	-.00441	.00707
	Hari 13	-.001000	.001569	1.000	-.00674	.00474
	Hari 14	-.000333	.001569	1.000	-.00607	.00541
	Hari 1	.005000	.001569	.137	-.00074	.01074
	Hari 2	.008000*	.001569	.001	.00226	.01374
	Hari 3	-.003000	.001569	.803	-.00874	.00274
	Hari 4	.003000	.001569	.803	-.00274	.00874
	Hari 5	-.001333	.001569	1.000	-.00707	.00441
	Hari 6	.003667	.001569	.544	-.00207	.00941
Hari 7	Hari 8	-.004333	.001569	.297	-.01007	.00141
	Hari 9	-.004333	.001569	.297	-.01007	.00141
	Hari 10	.005667	.001569	.056	-.00007	.01141
	Hari 11	-.004333	.001569	.297	-.01007	.00141
	Hari 12	.005000	.001569	.137	-.00074	.01074
	Hari 13	.002667	.001569	.899	-.00307	.00841
	Hari 14	.003333	.001569	.680	-.00241	.00907
	Hari 1	.009333*	.001569	.000	.00359	.01507
	Hari 2	.012333*	.001569	.000	.00659	.01807
Hari 8	Hari 3	.001333	.001569	1.000	-.00441	.00707
	Hari 4	.007333*	.001569	.004	.00159	.01307
	Hari 5	.003000	.001569	.803	-.00274	.00874
	Hari 6	.008000*	.001569	.001	.00226	.01374

	Hari 7	.004333	.001569	.297	-.00141	.01007
	Hari 9	.000000	.001569	1.000	-.00574	.00574
	Hari 10	.010000*	.001569	.000	.00426	.01574
	Hari 11	.000000	.001569	1.000	-.00574	.00574
	Hari 12	.009333*	.001569	.000	.00359	.01507
	Hari 13	.007000*	.001569	.007	.00126	.01274
	Hari 14	.007667*	.001569	.002	.00193	.01341
	Hari 1	.009333*	.001569	.000	.00359	.01507
	Hari 2	.012333*	.001569	.000	.00659	.01807
	Hari 3	.001333	.001569	1.000	-.00441	.00707
	Hari 4	.007333*	.001569	.004	.00159	.01307
	Hari 5	.003000	.001569	.803	-.00274	.00874
	Hari 6	.008000*	.001569	.001	.00226	.01374
Hari 9	Hari 7	.004333	.001569	.297	-.00141	.01007
	Hari 8	.000000	.001569	1.000	-.00574	.00574
	Hari 10	.010000*	.001569	.000	.00426	.01574
	Hari 11	.000000	.001569	1.000	-.00574	.00574
	Hari 12	.009333*	.001569	.000	.00359	.01507
	Hari 13	.007000*	.001569	.007	.00126	.01274
	Hari 14	.007667*	.001569	.002	.00193	.01341
	Hari 1	-.000667	.001569	1.000	-.00641	.00507
	Hari 2	.002333	.001569	.959	-.00341	.00807
	Hari 3	-.008667*	.001569	.000	-.01441	-.00293
	Hari 4	-.002667	.001569	.899	-.00841	.00307
	Hari 5	-.007000*	.001569	.007	-.01274	-.00126
	Hari 6	-.002000	.001569	.988	-.00774	.00374
Hari 10	Hari 7	-.005667	.001569	.056	-.01141	.00007
	Hari 8	-.010000*	.001569	.000	-.01574	-.00426
	Hari 9	-.010000*	.001569	.000	-.01574	-.00426
	Hari 11	-.010000*	.001569	.000	-.01574	-.00426
	Hari 12	-.000667	.001569	1.000	-.00641	.00507
	Hari 13	-.003000	.001569	.803	-.00874	.00274
	Hari 14	-.002333	.001569	.959	-.00807	.00341
Hari 11	Hari 1	.009333*	.001569	.000	.00359	.01507
	Hari 2	.012333*	.001569	.000	.00659	.01807

	Hari 3	.001333	.001569	1.000	-.00441	.00707
	Hari 4	.007333*	.001569	.004	.00159	.01307
	Hari 5	.003000	.001569	.803	-.00274	.00874
	Hari 6	.008000*	.001569	.001	.00226	.01374
	Hari 7	.004333	.001569	.297	-.00141	.01007
	Hari 8	.000000	.001569	1.000	-.00574	.00574
	Hari 9	.000000	.001569	1.000	-.00574	.00574
	Hari 10	.010000*	.001569	.000	.00426	.01574
	Hari 12	.009333*	.001569	.000	.00359	.01507
	Hari 13	.007000*	.001569	.007	.00126	.01274
	Hari 14	.007667*	.001569	.002	.00193	.01341
	Hari 1	.000000	.001569	1.000	-.00574	.00574
	Hari 2	.003000	.001569	.803	-.00274	.00874
	Hari 3	-.008000*	.001569	.001	-.01374	-.00226
	Hari 4	-.002000	.001569	.988	-.00774	.00374
	Hari 5	-.006333*	.001569	.021	-.01207	-.00059
	Hari 6	-.001333	.001569	1.000	-.00707	.00441
Hari 12	Hari 7	-.005000	.001569	.137	-.01074	.00074
	Hari 8	-.009333*	.001569	.000	-.01507	-.00359
	Hari 9	-.009333*	.001569	.000	-.01507	-.00359
	Hari 10	.000667	.001569	1.000	-.00507	.00641
	Hari 11	-.009333*	.001569	.000	-.01507	-.00359
	Hari 13	-.002333	.001569	.959	-.00807	.00341
	Hari 14	-.001667	.001569	.998	-.00741	.00407
	Hari 1	.002333	.001569	.959	-.00341	.00807
	Hari 2	.005333	.001569	.089	-.00041	.01107
	Hari 3	-.005667	.001569	.056	-.01141	.00007
	Hari 4	.000333	.001569	1.000	-.00541	.00607
	Hari 5	-.004000	.001569	.412	-.00974	.00174
Hari 13	Hari 6	.001000	.001569	1.000	-.00474	.00674
	Hari 7	-.002667	.001569	.899	-.00841	.00307
	Hari 8	-.007000*	.001569	.007	-.01274	-.00126
	Hari 9	-.007000*	.001569	.007	-.01274	-.00126
	Hari 10	.003000	.001569	.803	-.00274	.00874
	Hari 11	-.007000*	.001569	.007	-.01274	-.00126

		Hari 12	.002333	.001569	.959	-.00341	.00807
		Hari 14	.000667	.001569	1.000	-.00507	.00641
		Hari 1	.001667	.001569	.998	-.00407	.00741
		Hari 2	.004667	.001569	.206	-.00107	.01041
		Hari 3	-.006333*	.001569	.021	-.01207	-.00059
		Hari 4	-.000333	.001569	1.000	-.00607	.00541
		Hari 5	-.004667	.001569	.206	-.01041	.00107
		Hari 6	.000333	.001569	1.000	-.00541	.00607
	Hari 14	Hari 7	-.003333	.001569	.680	-.00907	.00241
		Hari 8	-.007667*	.001569	.002	-.01341	-.00193
		Hari 9	-.007667*	.001569	.002	-.01341	-.00193
		Hari 10	.002333	.001569	.959	-.00341	.00807
		Hari 11	-.007667*	.001569	.002	-.01341	-.00193
		Hari 12	.001667	.001569	.998	-.00407	.00741
		Hari 13	-.000667	.001569	1.000	-.00641	.00507
		Hari 2	.011000*	.001279	.000	.00632	.01568
		Hari 3	-.003667	.001279	.249	-.00835	.00101
		Hari 4	.000333	.001279	1.000	-.00435	.00501
		Hari 5	.003000	.001279	.538	-.00168	.00768
		Hari 6	.005667*	.001279	.008	.00099	.01035
		Hari 7	.008000*	.001279	.000	.00332	.01268
	Hari 1	Hari 8	.003000	.001279	.538	-.00168	.00768
		Hari 9	.000667	.001279	1.000	-.00401	.00535
		Hari 10	.009333*	.001279	.000	.00465	.01401
		Hari 11	.008333*	.001279	.000	.00365	.01301
	Formula 2	Hari 12	.010000*	.001279	.000	.00532	.01468
		Hari 13	.008667*	.001279	.000	.00399	.01335
		Hari 14	.009000*	.001279	.000	.00432	.01368
		Hari 1	-.011000*	.001279	.000	-.01568	-.00632
		Hari 3	-.014667*	.001279	.000	-.01935	-.00999
		Hari 4	-.010667*	.001279	.000	-.01535	-.00599
	Hari 2	Hari 5	-.008000*	.001279	.000	-.01268	-.00332
		Hari 6	-.005333*	.001279	.015	-.01001	-.00065
		Hari 7	-.003000	.001279	.538	-.00768	.00168
		Hari 8	-.008000*	.001279	.000	-.01268	-.00332

	Hari 9	-0.010333*	.001279	.000	-0.01501	-.00565
	Hari 10	-.001667	.001279	.985	-.00635	.00301
	Hari 11	-.002667	.001279	.704	-.00735	.00201
	Hari 12	-.001000	.001279	1.000	-.00568	.00368
	Hari 13	-.002333	.001279	.847	-.00701	.00235
	Hari 14	-.002000	.001279	.941	-.00668	.00268
	Hari 1	.003667	.001279	.249	-.00101	.00835
	Hari 2	.014667*	.001279	.000	.00999	.01935
	Hari 4	.004000	.001279	.154	-.00068	.00868
	Hari 5	.006667*	.001279	.001	.00199	.01135
	Hari 6	.009333*	.001279	.000	.00465	.01401
	Hari 7	.011667*	.001279	.000	.00699	.01635
Hari 3	Hari 8	.006667*	.001279	.001	.00199	.01135
	Hari 9	.004333	.001279	.091	-.00035	.00901
	Hari 10	.013000*	.001279	.000	.00832	.01768
	Hari 11	.012000*	.001279	.000	.00732	.01668
	Hari 12	.013667*	.001279	.000	.00899	.01835
	Hari 13	.012333*	.001279	.000	.00765	.01701
	Hari 14	.012667*	.001279	.000	.00799	.01735
	Hari 1	-.000333	.001279	1.000	-.00501	.00435
	Hari 2	.010667*	.001279	.000	.00599	.01535
	Hari 3	-.004000	.001279	.154	-.00868	.00068
	Hari 5	.002667	.001279	.704	-.00201	.00735
	Hari 6	.005333*	.001279	.015	.00065	.01001
	Hari 7	.007667*	.001279	.000	.00299	.01235
Hari 4	Hari 8	.002667	.001279	.704	-.00201	.00735
	Hari 9	.000333	.001279	1.000	-.00435	.00501
	Hari 10	.009000*	.001279	.000	.00432	.01368
	Hari 11	.008000*	.001279	.000	.00332	.01268
	Hari 12	.009667*	.001279	.000	.00499	.01435
	Hari 13	.008333*	.001279	.000	.00365	.01301
	Hari 14	.008667*	.001279	.000	.00399	.01335
	Hari 1	-.003000	.001279	.538	-.00768	.00168
Hari 5	Hari 2	.008000*	.001279	.000	.00332	.01268
	Hari 3	-.006667*	.001279	.001	-.01135	-.00199



	Hari 4		-0.02667	.001279	.704	-0.0735	.00201
	Hari 6		.02667	.001279	.704	-0.0201	.00735
	Hari 7		.005000*	.001279	.028	.00032	.00968
	Hari 8		.000000	.001279	1.000	-0.0468	.00468
	Hari 9		-0.02333	.001279	.847	-0.0701	.00235
	Hari 10		.006333*	.001279	.002	.00165	.01101
	Hari 11		.005333*	.001279	.015	.00065	.01001
	Hari 12		.007000*	.001279	.001	.00232	.01168
	Hari 13		.005667*	.001279	.008	.00099	.01035
	Hari 14		.006000*	.001279	.004	.00132	.01068
	Hari 1		-0.05667*	.001279	.008	-0.1035	-0.0099
	Hari 2		.005333*	.001279	.015	.00065	.01001
	Hari 3		-0.009333*	.001279	.000	-0.1401	-0.0465
	Hari 4		-0.05333*	.001279	.015	-0.1001	-0.0065
	Hari 5		-0.02667	.001279	.704	-0.0735	.00201
	Hari 7		.002333	.001279	.847	-0.0235	.00701
	Hari 6	Hari 8	-0.02667	.001279	.704	-0.0735	.00201
		Hari 9	-0.05000*	.001279	.028	-0.0968	-0.0032
		Hari 10	.003667	.001279	.249	-0.00101	.00835
		Hari 11	.002667	.001279	.704	-0.0201	.00735
		Hari 12	.004333	.001279	.091	-0.00035	.00901
		Hari 13	.003000	.001279	.538	-0.00168	.00768
		Hari 14	.003333	.001279	.379	-0.00135	.00801
		Hari 1	-0.08000*	.001279	.000	-0.1268	-0.0332
		Hari 2	.003000	.001279	.538	-0.00168	.00768
		Hari 3	-0.11667*	.001279	.000	-0.1635	-0.0699
		Hari 4	-0.07667*	.001279	.000	-0.1235	-0.0299
		Hari 5	-0.05000*	.001279	.028	-0.0968	-0.0032
	Hari 7	Hari 6	-0.02333	.001279	.847	-0.0701	.00235
		Hari 8	-0.05000*	.001279	.028	-0.0968	-0.0032
		Hari 9	-0.07333*	.001279	.000	-0.1201	-0.0265
		Hari 10	.001333	.001279	.998	-0.00335	.00601
		Hari 11	.000333	.001279	1.000	-0.00435	.00501
		Hari 12	.002000	.001279	.941	-0.00268	.00668
		Hari 13	.000667	.001279	1.000	-0.00401	.00535



	Hari 14	.001000	.001279	1.000	-0.00368	.00568
	Hari 1	-.003000	.001279	.538	-.00768	.00168
	Hari 2	.008000*	.001279	.000	.00332	.01268
	Hari 3	-.006667*	.001279	.001	-.01135	-.00199
	Hari 4	-.002667	.001279	.704	-.00735	.00201
	Hari 5	.000000	.001279	1.000	-.00468	.00468
	Hari 6	.002667	.001279	.704	-.00201	.00735
Hari 8	Hari 7	.005000*	.001279	.028	.00032	.00968
	Hari 9	-.002333	.001279	.847	-.00701	.00235
	Hari 10	.006333*	.001279	.002	.00165	.01101
	Hari 11	.005333*	.001279	.015	.00065	.01001
	Hari 12	.007000*	.001279	.001	.00232	.01168
	Hari 13	.005667*	.001279	.008	.00099	.01035
	Hari 14	.006000*	.001279	.004	.00132	.01068
	Hari 1	-.000667	.001279	1.000	-.00535	.00401
	Hari 2	.010333*	.001279	.000	.00565	.01501
	Hari 3	-.004333	.001279	.091	-.00901	.00035
	Hari 4	-.000333	.001279	1.000	-.00501	.00435
	Hari 5	.002333	.001279	.847	-.00235	.00701
	Hari 6	.005000*	.001279	.028	.00032	.00968
Hari 9	Hari 7	.007333*	.001279	.000	.00265	.01201
	Hari 8	.002333	.001279	.847	-.00235	.00701
	Hari 10	.008667*	.001279	.000	.00399	.01335
	Hari 11	.007667*	.001279	.000	.00299	.01235
	Hari 12	.009333*	.001279	.000	.00465	.01401
	Hari 13	.008000*	.001279	.000	.00332	.01268
	Hari 14	.008333*	.001279	.000	.00365	.01301
	Hari 1	-.009333*	.001279	.000	-.01401	-.00465
	Hari 2	.001667	.001279	.985	-.00301	.00635
	Hari 3	-.013000*	.001279	.000	-.01768	-.00832
	Hari 4	-.009000*	.001279	.000	-.01368	-.00432
Hari 10	Hari 5	-.006333*	.001279	.002	-.01101	-.00165
	Hari 6	-.003667	.001279	.249	-.00835	.00101
	Hari 7	-.001333	.001279	.998	-.00601	.00335
	Hari 8	-.006333*	.001279	.002	-.01101	-.00165

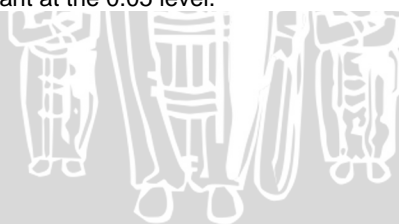


	Hari 9	-0.08667*	.001279	.000	-0.1335	-0.0399
	Hari 11	-0.01000	.001279	1.000	-0.0568	.00368
	Hari 12	.000667	.001279	1.000	-0.0401	.00535
	Hari 13	-0.00667	.001279	1.000	-0.0535	.00401
	Hari 14	-0.00333	.001279	1.000	-0.0501	.00435
	Hari 1	-0.08333*	.001279	.000	-0.1301	-0.0365
	Hari 2	.002667	.001279	.704	-0.0201	.00735
	Hari 3	-0.12000*	.001279	.000	-0.1668	-0.0732
	Hari 4	-0.08000*	.001279	.000	-0.1268	-0.0332
	Hari 5	-0.05333*	.001279	.015	-0.1001	-0.0065
	Hari 6	-0.02667	.001279	.704	-0.0735	.00201
Hari 11	Hari 7	-0.00333	.001279	1.000	-0.0501	.00435
	Hari 8	-0.05333*	.001279	.015	-0.1001	-0.0065
	Hari 9	-0.07667*	.001279	.000	-0.1235	-0.0299
	Hari 10	.001000	.001279	1.000	-0.0368	.00568
	Hari 12	.001667	.001279	.985	-0.0301	.00635
	Hari 13	.000333	.001279	1.000	-0.0435	.00501
	Hari 14	.000667	.001279	1.000	-0.0401	.00535
	Hari 1	-0.10000*	.001279	.000	-0.1468	-0.0532
	Hari 2	.001000	.001279	1.000	-0.0368	.00568
	Hari 3	-0.13667*	.001279	.000	-0.1835	-0.0899
	Hari 4	-0.09667*	.001279	.000	-0.1435	-0.0499
	Hari 5	-0.07000*	.001279	.001	-0.1168	-0.0232
	Hari 6	-0.04333	.001279	.091	-0.0901	.00035
Hari 12	Hari 7	-0.02000	.001279	.941	-0.0668	.00268
	Hari 8	-0.07000*	.001279	.001	-0.1168	-0.0232
	Hari 9	-0.09333*	.001279	.000	-0.1401	-0.0465
	Hari 10	-0.00667	.001279	1.000	-0.0535	.00401
	Hari 11	-0.01667	.001279	.985	-0.0635	.00301
	Hari 13	-0.01333	.001279	.998	-0.0601	.00335
	Hari 14	-0.01000	.001279	1.000	-0.0568	.00368
	Hari 1	-0.08667*	.001279	.000	-0.1335	-0.0399
Hari 13	Hari 2	.002333	.001279	.847	-0.0235	.00701
	Hari 3	-0.12333*	.001279	.000	-0.1701	-0.0765
	Hari 4	-0.08333*	.001279	.000	-0.1301	-0.0365



	Hari 5	-0.05667*	.001279	.008	-.01035	-.00099
	Hari 6	-.003000	.001279	.538	-.00768	.00168
	Hari 7	-.000667	.001279	1.000	-.00535	.00401
	Hari 8	-0.05667*	.001279	.008	-.01035	-.00099
	Hari 9	-.008000*	.001279	.000	-.01268	-.00332
	Hari 10	.000667	.001279	1.000	-.00401	.00535
	Hari 11	-.000333	.001279	1.000	-.00501	.00435
	Hari 12	.001333	.001279	.998	-.00335	.00601
	Hari 14	.000333	.001279	1.000	-.00435	.00501
	Hari 1	-.009000*	.001279	.000	-.01368	-.00432
	Hari 2	.002000	.001279	.941	-.00268	.00668
	Hari 3	-0.12667*	.001279	.000	-.01735	-.00799
	Hari 4	-.008667*	.001279	.000	-.01335	-.00399
	Hari 5	-.006000*	.001279	.004	-.01068	-.00132
	Hari 6	-.003333	.001279	.379	-.00801	.00135
Hari 14	Hari 7	-.001000	.001279	1.000	-.00568	.00368
	Hari 8	-.006000*	.001279	.004	-.01068	-.00132
	Hari 9	-.008333*	.001279	.000	-.01301	-.00365
	Hari 10	.000333	.001279	1.000	-.00435	.00501
	Hari 11	-.000667	.001279	1.000	-.00535	.00401
	Hari 12	.001000	.001279	1.000	-.00368	.00568
	Hari 13	-.000333	.001279	1.000	-.00501	.00435

*. The mean difference is significant at the 0.05 level.



Lampiran 6. Hasil Uji Statistik SPSS Kadar Asiatikosida pada Fitosom
Ekstrak Pegagan antara F1 dan F2

Tests of Normality

	Formula	Kolmogorov-Smirnov ^a			Shapiro-Wilk		
		Statistic	df	Sig.	Statistic	df	Sig.
Kadar	Formula 1	.363	3	.	.802	3	.119
	Formula 2	.178	3	.	.999	3	.957

a. Lilliefors Significance Correction

Independent Samples Test

	Levene's Test for Equality of Variances	t-test for Equality of Means								
		F	Sig.	t	df	Sig. (2-tailed)	Mean Difference	Std. Error Difference	95% Confidence Interval of the Difference	
									Lower	Upper
Kadar	Equal variances assumed	5.336	.082	77.576	4	.000	.00590066	.00007606	.00568948	.00611185
	Equal variances not assumed			77.576	2.508	.000	.00590066	.00007606	.00562937	.00617195

Lampiran 7. Hasil Uji Statistik SPSS Kadar Asiatikosida dalam Fitosom
Ekstrak Pegagan Selama Penyimpanan

Tests of Normality							
	Minggu Ke-	Kolmogorov-Smirnov ^a			Shapiro-Wilk		
		Statistic	df	Sig.	Statistic	df	Sig.
Formula 1	Minggu ke-0	.303	3	.	.909	3	.416
	Minggu ke-1	.217	3	.	.988	3	.790
	Minggu ke-2	.198	3	.	.995	3	.869
Formula 2	Minggu ke-0	.276	3	.	.943	3	.538
	Minggu ke-1	.318	3	.	.887	3	.346
	Minggu ke-2	.279	3	.	.939	3	.523

a. Lilliefors Significance Correction

Test of Homogeneity of Variances				
	Levene Statistic	df1	df2	Sig.
Formula 1	.127	2	6	.883
Formula 2	3.444	2	6	.101

ANOVA						
		Sum of Squares	df	Mean Square	F	Sig.
Formula 1	Between Groups	.000	2	.000	3712.817	.000
	Within Groups	.000	6	.000		
	Total	.000	8			
Formula 2	Between Groups	.000	2	.000	273.796	.000
	Within Groups	.000	6	.000		
	Total	.000	8			

Post Hoc Tests

Multiple Comparisons

Tukey HSD

Dependent Variable	(I) Minggu Ke-	(J) Minggu Ke-	Mean Difference (I-J)	Std. Error	Sig.	95% Confidence Interval	
						Lower Bound	Upper Bound
Formula 1	Minggu ke-0	Minggu ke-1	.00020659*	.00000288	.000	.0001978	.0002154
		Minggu ke-2	.00022207*	.00000288	.000	.0002132	.0002309
	Minggu ke-1	Minggu ke-0	-.00020659*	.00000288	.000	-.0002154	-.0001978
		Minggu ke-2	.00001548*	.00000288	.004	.0000067	.0000243
	Minggu ke-2	Minggu ke-0	-.00022207*	.00000288	.000	-.0002309	-.0002132
		Minggu ke-1	-.00001548*	.00000288	.004	-.0000243	-.0000067
Formula 2	Minggu ke-0	Minggu ke-1	.00004279*	.00000381	.000	.0000311	.0000545
		Minggu ke-2	.00008907*	.00000381	.000	.0000774	.0001007
	Minggu ke-1	Minggu ke-0	-.00004279*	.00000381	.000	-.0000545	-.0000311
		Minggu ke-2	.00004628*	.00000381	.000	.0000346	.0000580
	Minggu ke-2	Minggu ke-0	-.00008907*	.00000381	.000	-.0001007	-.0000774
		Minggu ke-1	-.00004628*	.00000381	.000	-.0000580	-.0000346

*. The mean difference is significant at the 0.05 level.

Homogeneous Subsets

Formula 1

Tukey HSD

Minggu Ke-	N	Subset for alpha = 0.05		
		1	2	3
Minggu ke-2	3	.1132710		
Minggu ke-1	3		.1132865	
Minggu ke-0	3			.1134931
Sig.		1.000	1.000	1.000

Means for groups in homogeneous subsets are displayed.

a. Uses Harmonic Mean Sample Size = 3,000.

Formula 2

Tukey HSD

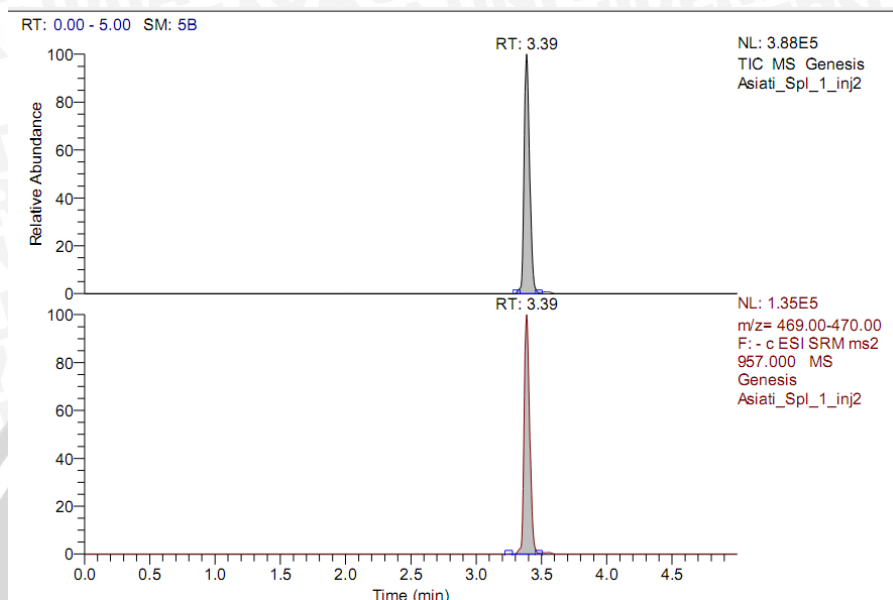
Minggu Ke-	N	Subset for alpha = 0.05		
		1	2	3
Minggu ke-2	3	.1074045		
Minggu ke-1	3		.1074507	
Minggu ke-0	3			.1074935
Sig.		1.000	1.000	1.000

Means for groups in homogeneous subsets are displayed.

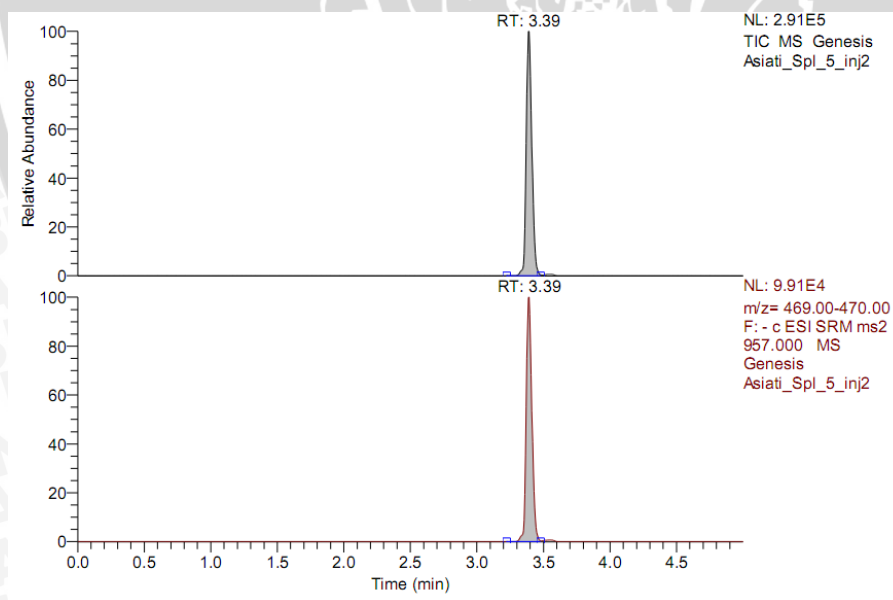
a. Uses Harmonic Mean Sample Size = 3,000.

Lampiran 8. Hasil Spektra Asiatikosida pada fitosom Ekstrak Pegagan F1

Gambar 8.1 Hasil Spektra Asiatikosida dalam Fitosom Ekstrak Pegagan F1 minggu ke-0

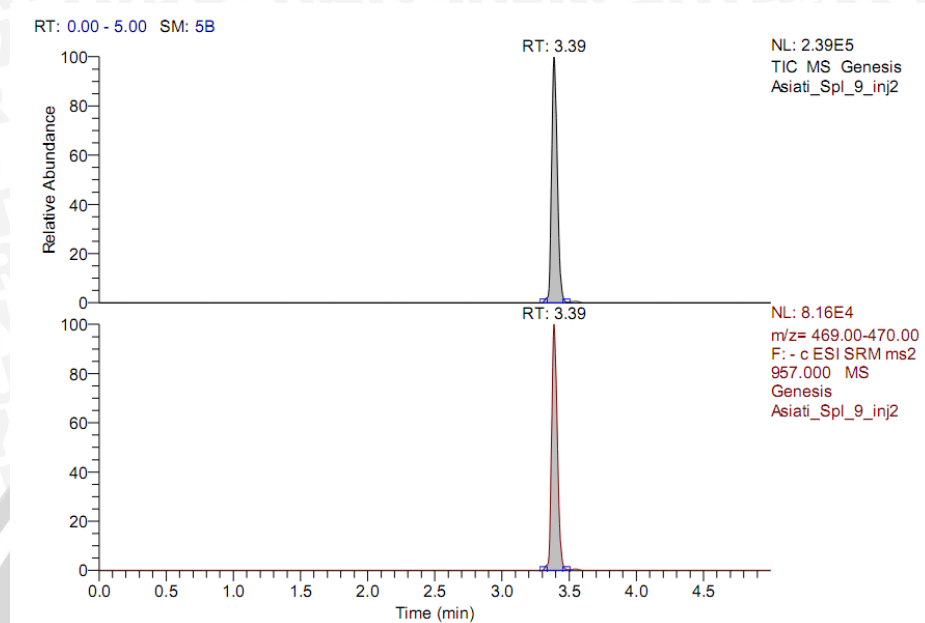


Gambar 8.2 Hasil Spektra Asiatikosida dalam Fitosom Ekstrak Pegagan F1 minggu ke-1





Gambar 8.3 Hasil Spektra Asiatikosida dalam Fitosom Ekstrak Pegagan F1 minggu ke-3

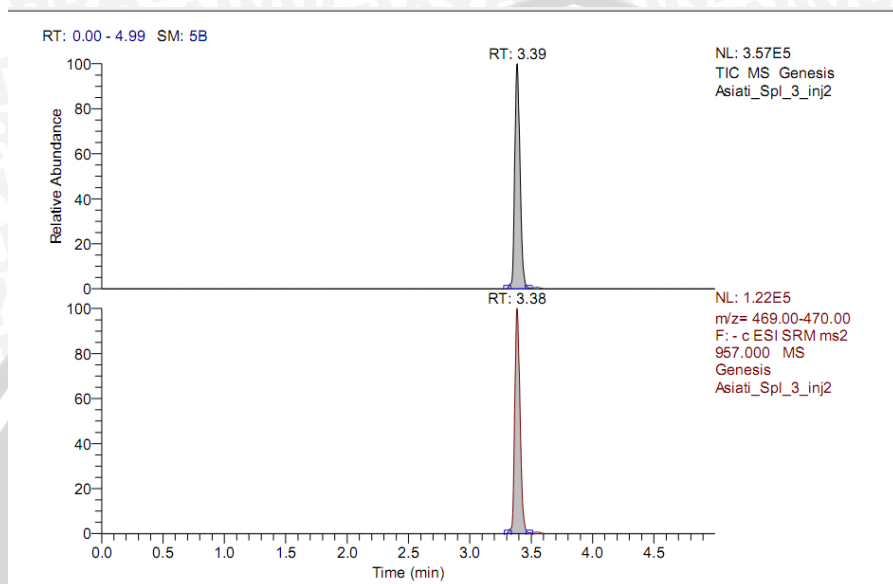


Lampiran 9 Gambar Hasil Spektra Asiatikosida dalam Fitosom Ekstrak

Pegagan F2

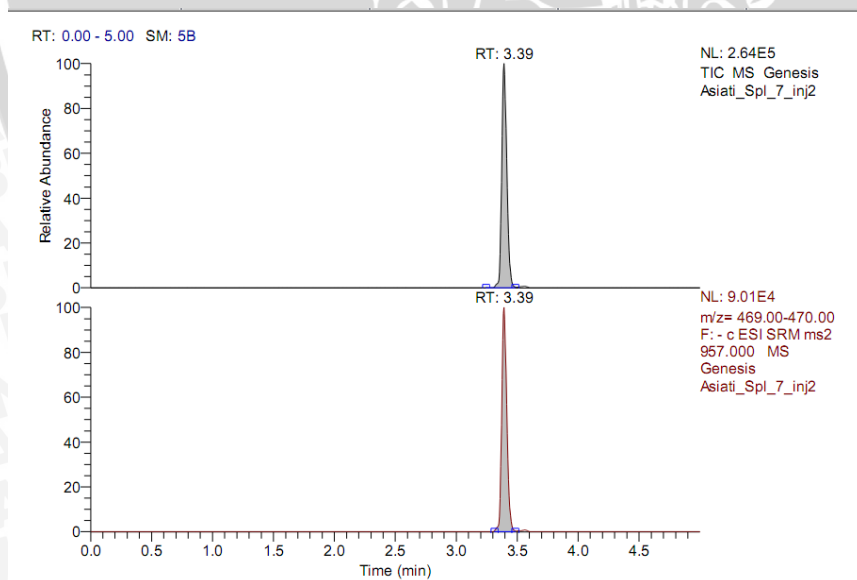
9.1 Gambar Hasil Spektra Asiatikosida dalam Fitosom Ekstrak Pegagan

Minggu ke-0

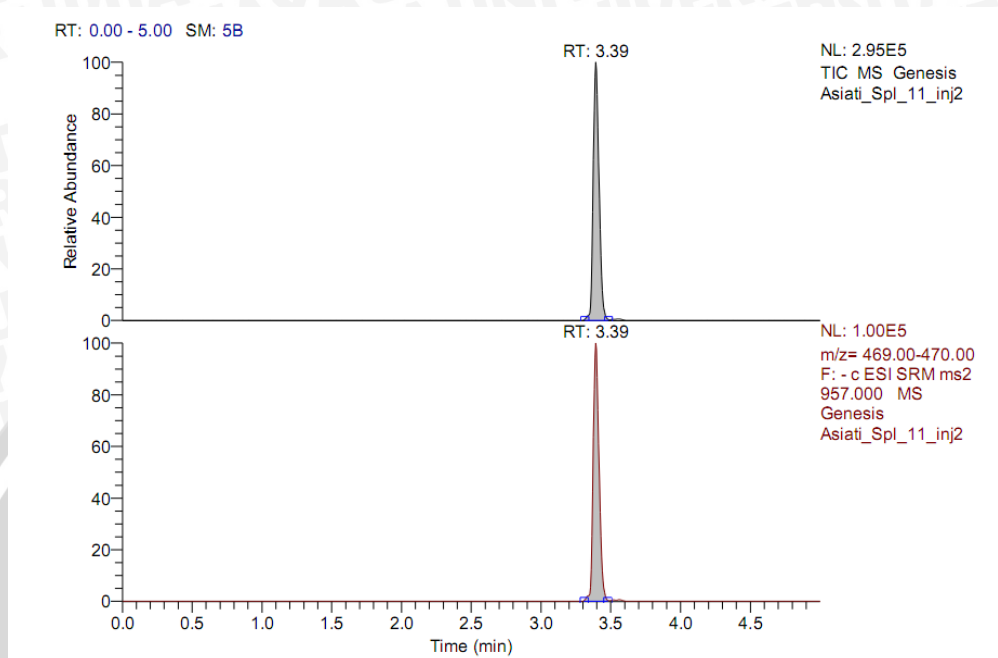


9.2 Gambar Hasil Spektra Asiatikosida dalam Fitosom Ekstrak Pegagan F2

Minggu ke-1



Lampiran 9.3 Gambar Hasil Spektra Asiatikosida dalam Fitosom Ekstrak
 Pegagan F2 Minggu ke-2



**Lampiran 10. Hasil Statistik Perbandingan Nilai Entrapment Efficiency
antara F1 dan F2**

Tests of Normality

	Formula	Kolmogorov-Smirnov ^a			Shapiro-Wilk		
		Statistic	df	Sig.	Statistic	df	Sig.
EE	Formula 1	.175	3	.	1.000	3	.992
	Formula 2	.270	3	.	.949	3	.564

a. Lilliefors Significance Correction

Independent Samples Test

	Levene's Test for Equality of Variances		t-test for Equality of Means						
	F	Sig.	t	df	Sig. (2-tailed)	Mean Difference	Std. Error Difference	95% Confidence Interval of the Difference	
								Lower	Upper
Equal variances assumed	1.261	.324	134.780	4	.000	5.5200	.04095632	5.63379296	5.40636704
Equal variances not assumed			134.780	3.191	.000	5.5200	.04095632	5.64610811	5.39405189

Lampiran 11. Prosedur Pembuatan Aqua Bebas CO₂

