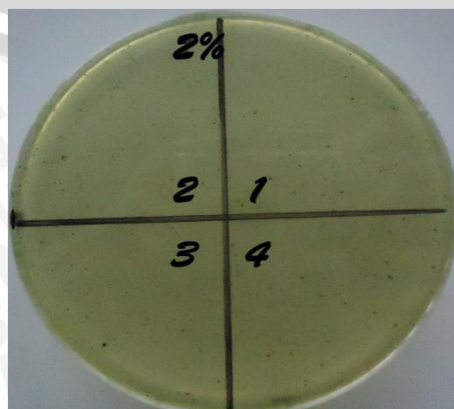
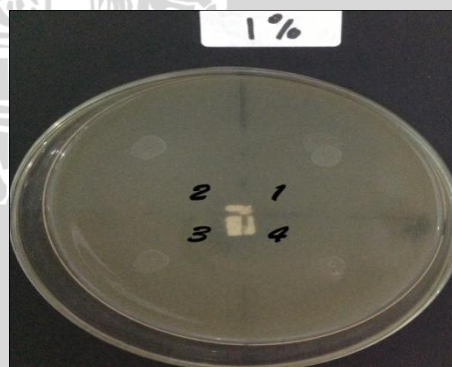
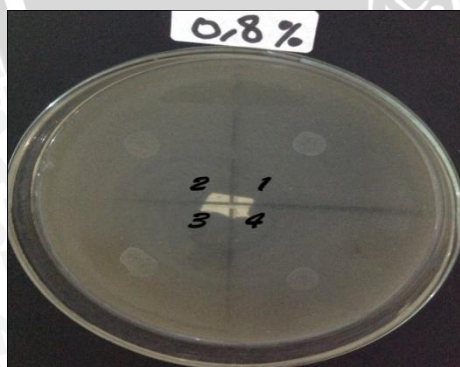
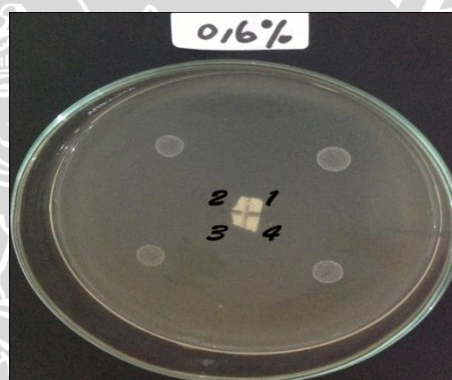
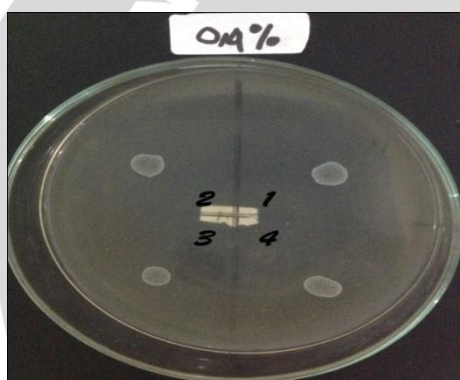
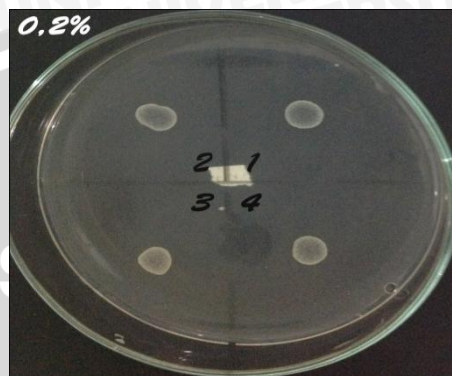
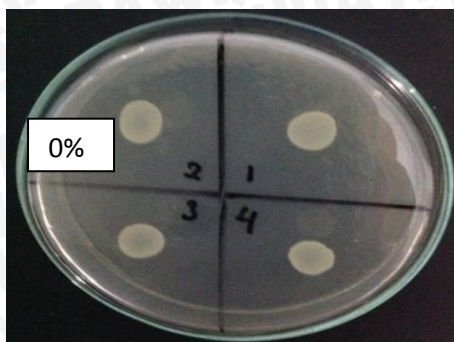
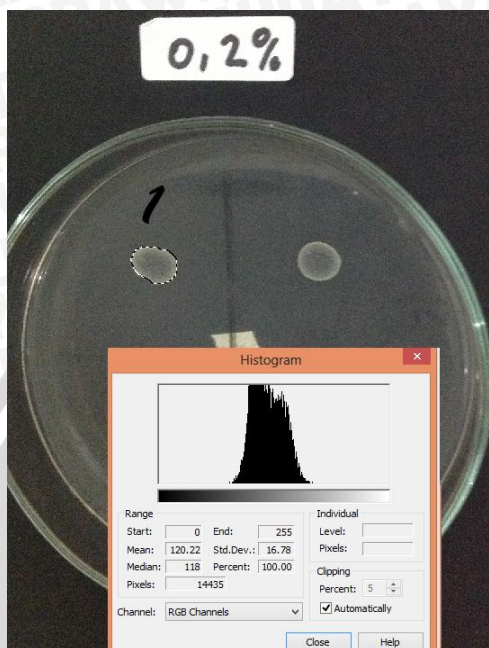


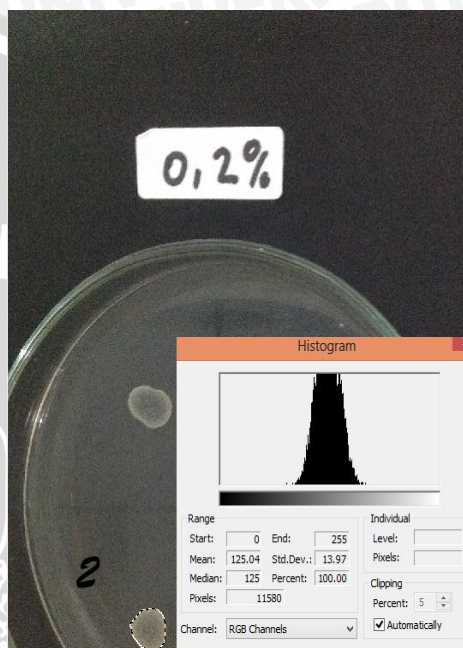
LAMPIRAN 1 HASIL PENELITIAN



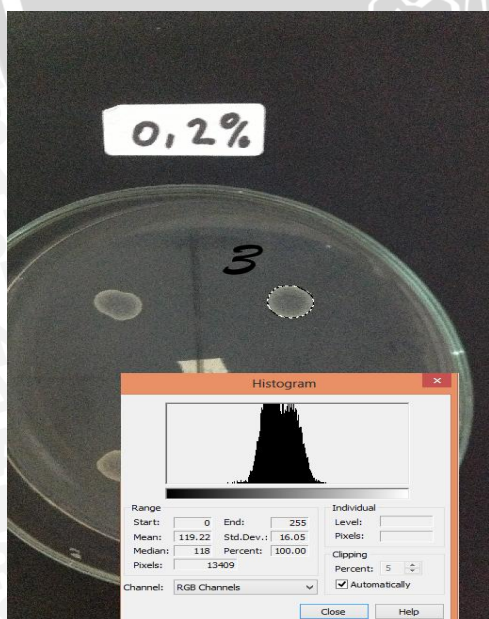
LAMPIRAN 2
HISTOGRAM



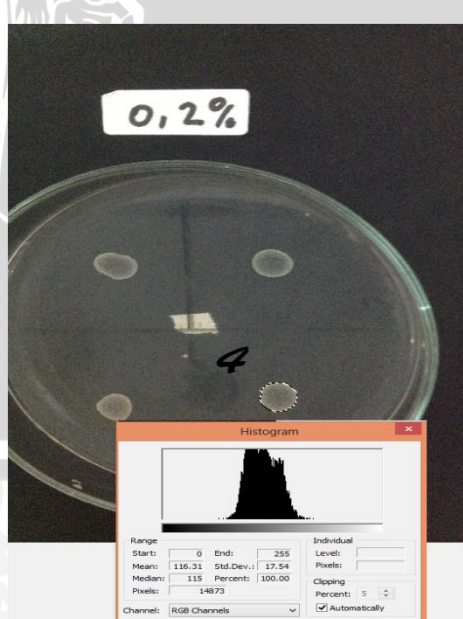
Konsentrasi 0,2% pengulangan 1



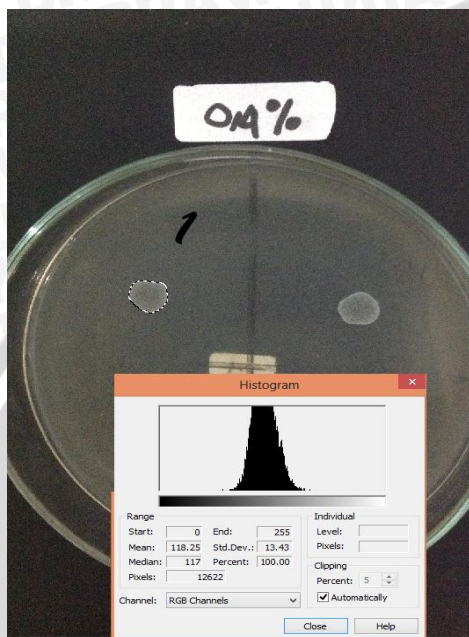
Konsentrasi 0,2% pengulangan 2



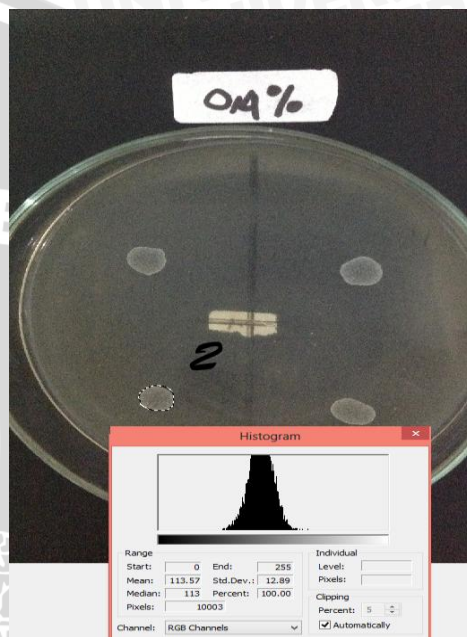
Konsentrasi 0,2% pengulangan 3



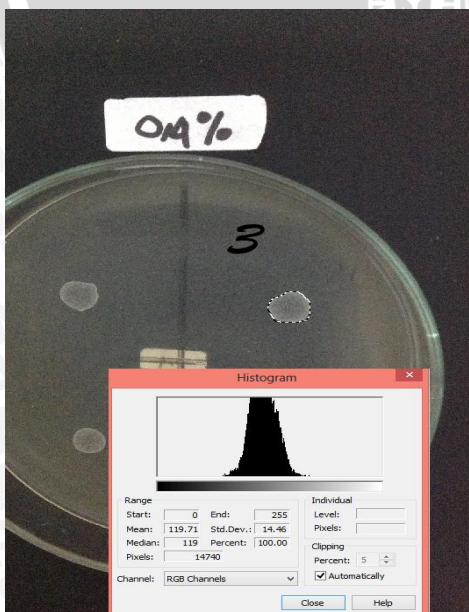
Konsentrasi 0,2% pengulangan 4



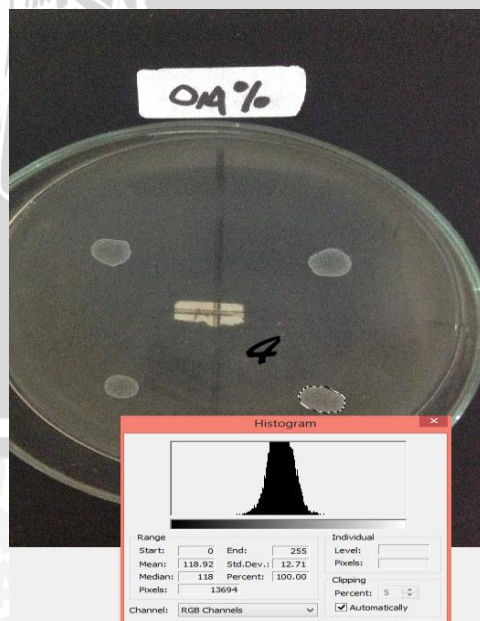
Konsentrasi 0,4% pengulangan 1



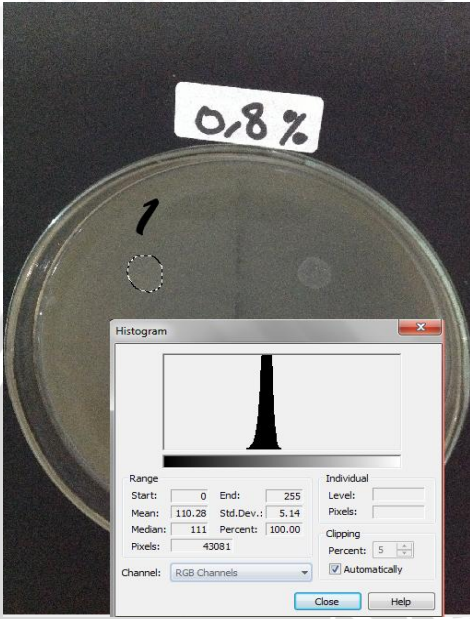
Konsentrasi 0,4% pengulangan 2



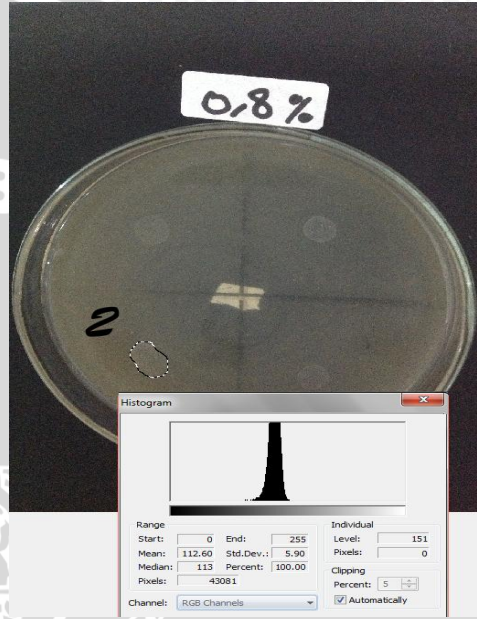
Konsentrasi 0,4% pengulangan 3



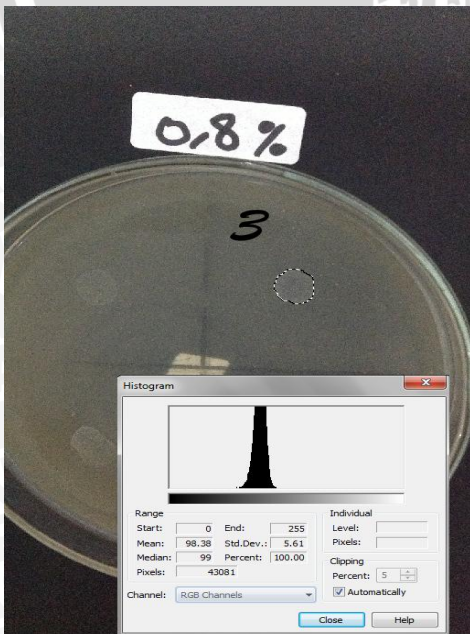
Konsentrasi 0,4% pengulangan 4



Konsentrasi 0,8% pengulangan 1



Konsentrasi 0,8% pengulangan 2

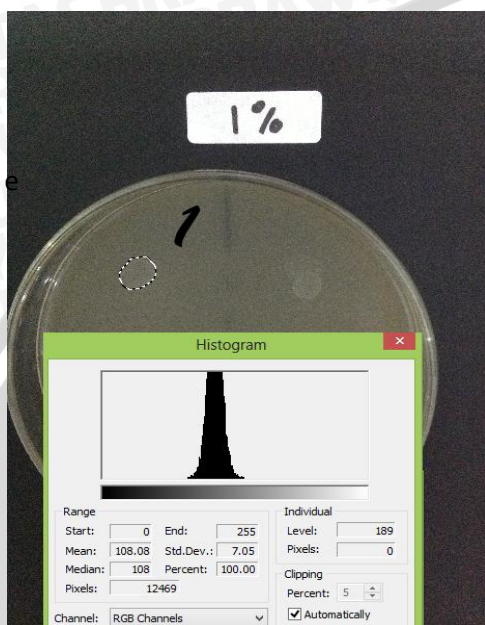


Konsentrasi 0,8% pengulangan 3



Konsentrasi 0,8% pengulangan 4

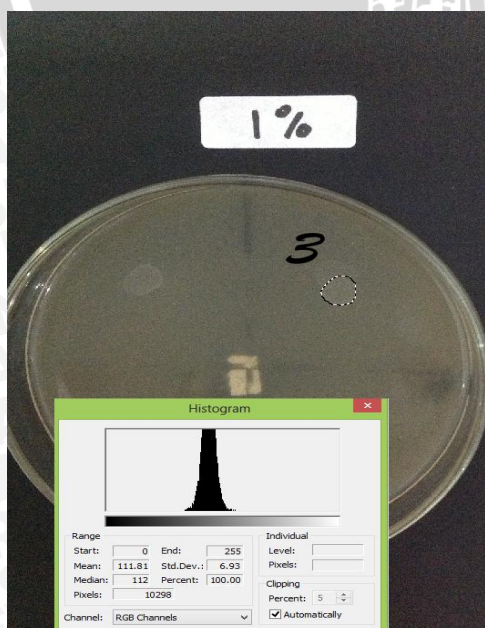




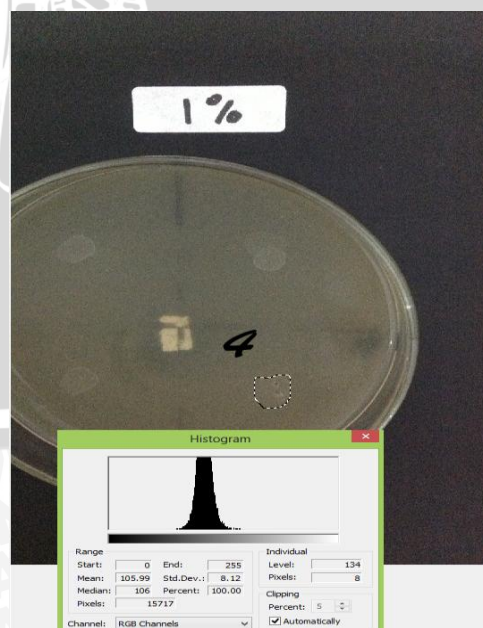
Konsentrasi 1% pengulangan 1



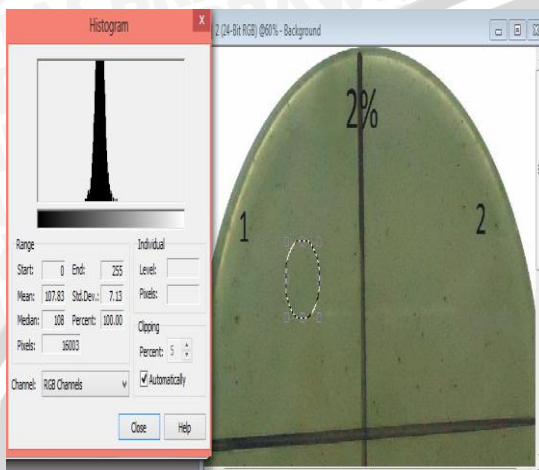
Konsentrasi 1% pengulangan 2



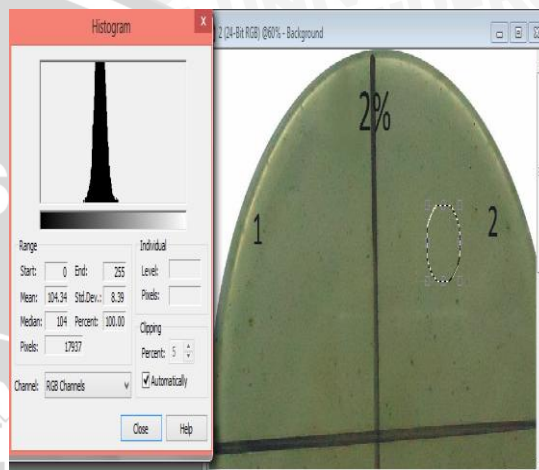
Konsentrasi 1% pengulangan 3



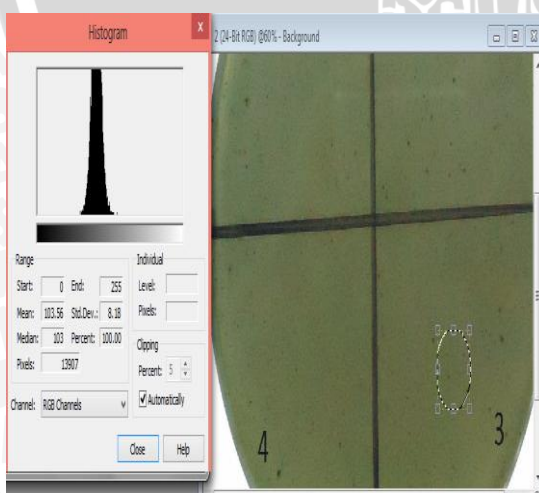
Konsentrasi 1% pengulangan 4



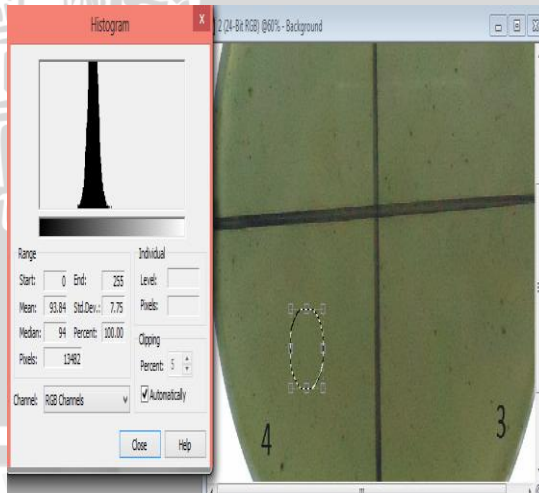
Konsentrasi 2% pengulangan 1



Konsentrasi 2% pengulangan 2



Konsentrasi 2% pengulangan 3



Konsentrasi 2% pengulangan 4

LAMPIRAN 3. UJI NORMALITAS DATA ASLI

Tests of Normality						
	Kolmogorov-Smirnov ^a			Shapiro-Wilk		
	Statistic	df	Sig.	Statistic	df	Sig.
histogram	.367	28	.000	.650	28	.000

a. Lilliefors Significance Correction

LAMPIRAN 4. UJI HOMOGENITAS DATA ASLI

Test of Homogeneity of Variances			
histogram			
Levene Statistic	df1	df2	Sig.
5.149	6	21	.002

LAMPIRAN 5 UJI KRUSKAL WALLIS

Ranks			
	konsentrasi	N	Mean Rank
histogram	0%	4	26.50
	0.2 %	4	19.25
	0.4 %	4	16.25
	0.6 %	4	20.00
	0.8 %	4	6.75
	1 %	4	7.75
	2 %	4	5.00
	Total	28	



Test Statistics^{a,b}

	histogram
Chi-Square	23.394
df	6
Asymp. Sig.	.001

- a. Kruskal Wallis Test
- b. Grouping Variable:
konsentrasi

LAMPIRAN 6 UJI MANN WHITNEY

- a. 0 % dan 0.2 %

Ranks

	konsentrasi	N	Mean Rank	Sum of Ranks
histogram	0%	4	6.50	26.00
	0.2 %	4	2.50	10.00
	Total	8		

Test Statistics^a

	histogram
Mann-Whitney U	.000
Wilcoxon W	10.000
Z	-2.309
Asymp. Sig. (2-tailed)	.021
Exact Sig. [2*(1-tailed Sig.)]	.029 ^b

- a. Grouping Variable: konsentrasi
- b. Not corrected for ties.



b. 0 % dan 0.4 %

Ranks

	konsentrasi	N	Mean Rank	Sum of Ranks
histogram	0%	4	6.50	26.00
	0.4 %	4	2.50	10.00
	Total	8		

Test Statistics^a

	histogram
Mann-Whitney U	.000
Wilcoxon W	10.000
Z	-2.309
Asymp. Sig. (2-tailed)	.021
Exact Sig. [2*(1-tailed Sig.)]	.029 ^b

a. Grouping Variable: konsentrasi

b. Not corrected for ties.

c. 0 % dan 0.6 %

Ranks

	Konsentrasi	N	Mean Rank	Sum of Ranks
Histogram	0%	4	6.50	26.00
	0.6 %	4	2.50	10.00
	Total	8		

Test Statistics^a

	histogram
Mann-Whitney U	.000
Wilcoxon W	10.000
Z	-2.309
Asymp. Sig. (2-tailed)	.021
Exact Sig. [2*(1-tailed Sig.)]	.029 ^b

a. Grouping Variable: konsentrasi

b. Not corrected for ties.

d. 0 % dan 0.8 %

Ranks

Konsentrasi	N	Mean Rank	Sum of Ranks
Histogram 0%	4	6.50	26.00
0.8 %	4	2.50	10.00
Total	8		

Test Statistics^a

	histogram
Mann-Whitney U	.000
Wilcoxon W	10.000
Z	-2.309
Asymp. Sig. (2-tailed)	.021
Exact Sig. [2*(1-tailed Sig.)]	.029 ^b

a. Grouping Variable: konsentrasi

b. Not corrected for ties.

e. 0% dan 1 %

Ranks

konsentrasi	N	Mean Rank	Sum of Ranks
histogram 0%	4	6.50	26.00
1 %	4	2.50	10.00
Total	8		

Test Statistics^a

	histogram
Mann-Whitney U	.000
Wilcoxon W	10.000
Z	-2.309
Asymp. Sig. (2-tailed)	.021
Exact Sig. [2*(1-tailed Sig.)]	.029 ^b

a. Grouping Variable: konsentrasi

b. Not corrected for ties.

f. 0% dan 2 %

Ranks

konsentrasi	N	Mean Rank	Sum of Ranks
histogram 0%	4	6.50	26.00
2 %	4	2.50	10.00
Total	8		



Test Statistics^a

	histogram
Mann-Whitney U	.000
Wilcoxon W	10.000
Z	-2.309
Asymp. Sig. (2-tailed)	.021
Exact Sig. [2*(1-tailed Sig.)]	.029 ^b

a. Grouping Variable: konsentrasi

b. Not corrected for ties.

g. 0.2 % dan 0.4 %

Ranks

		N	Mean Rank	Sum of Ranks
histogram	0.2 %	4	5.50	22.00
	0.4 %	4	3.50	14.00
Total		8		

Test Statistics^a

	histogram
Mann-Whitney U	4.000
Wilcoxon W	14.000
Z	-1.155
Asymp. Sig. (2-tailed)	.248
Exact Sig. [2*(1-tailed Sig.)]	.343 ^b

a. Grouping Variable: konsentrasi

b. Not corrected for ties.



h. 0.2 % dan 0.6 %

Ranks

	konsentrasi	N	Mean Rank	Sum of Ranks
histogram	0.2 %	4	4.25	17.00
	0.6 %	4	4.75	19.00
	Total	8		

Test Statistics^a

	histogram
Mann-Whitney U	7.000
Wilcoxon W	17.000
Z	-.289
Asymp. Sig. (2-tailed)	.773
Exact Sig. [2*(1-tailed Sig.)]	.886 ^b

a. Grouping Variable: konsentrasi

b. Not corrected for ties.

i. 0.2 % dan 0.8 %

Ranks

	konsentrasi	N	Mean Rank	Sum of Ranks
histogram	0.2 %	4	6.50	26.00
	0.8 %	4	2.50	10.00
	Total	8		



Test Statistics^a

	histogram
Mann-Whitney U	.000
Wilcoxon W	10.000
Z	-2.309
Asymp. Sig. (2-tailed)	.021
Exact Sig. [2*(1-tailed Sig.)]	.029 ^b

a. Grouping Variable: konsentrasi

b. Not corrected for ties.

j. 0.2 % dan 1 %

Ranks

		N	Mean Rank	Sum of Ranks
histogram	0.2 %	4	6.50	26.00
	1 %	4	2.50	10.00
Total		8		

Test Statistics^a

	histogram
Mann-Whitney U	.000
Wilcoxon W	10.000
Z	-2.309
Asymp. Sig. (2-tailed)	.021
Exact Sig. [2*(1-tailed Sig.)]	.029 ^b

a. Grouping Variable: konsentrasi

b. Not corrected for ties.



k. 0.2 % dan 2 %

Ranks

	konsentrasi	N	Mean Rank	Sum of Ranks
histogram	0.2 %	4	6.50	26.00
	2 %	4	2.50	10.00
	Total	8		

Test Statistics^a

	histogram
Mann-Whitney U	.000
Wilcoxon W	10.000
Z	-2.309
Asymp. Sig. (2-tailed)	.021
Exact Sig. [2*(1-tailed Sig.)]	.029 ^b

a. Grouping Variable: konsentrasi

b. Not corrected for ties.

l. 0.4 % dan 0.6 %

Ranks

	konsentrasi	N	Mean Rank	Sum of Ranks
histogram	0.4 %	4	3.25	13.00
	0.6 %	4	5.75	23.00
	Total	8		



Test Statistics^a

	histogram
Mann-Whitney U	3.000
Wilcoxon W	13.000
Z	-1.443
Asymp. Sig. (2-tailed)	.149
Exact Sig. [2*(1-tailed Sig.)]	.200 ^b

a. Grouping Variable: konsentrasi

b. Not corrected for ties.

m. 0.4 % dan 0.8 %

Ranks

		N	Mean Rank	Sum of Ranks
histogram	0.4 %	4	6.50	26.00
	0.8 %	4	2.50	10.00
Total		8		

Test Statistics^a

	histogram
Mann-Whitney U	.000
Wilcoxon W	10.000
Z	-2.309
Asymp. Sig. (2-tailed)	.021
Exact Sig. [2*(1-tailed Sig.)]	.029 ^b

a. Grouping Variable: konsentrasi

b. Not corrected for ties.



n. 0.4 % dan 1 %

Ranks

	konsentrasi	N	Mean Rank	Sum of Ranks
histogram	0.4 %	4	6.50	26.00
	1 %	4	2.50	10.00
	Total	8		

Test Statistics^a

	histogram
Mann-Whitney U	.000
Wilcoxon W	10.000
Z	-2.309
Asymp. Sig. (2-tailed)	.021
Exact Sig. [2*(1-tailed Sig.)]	.029 ^b

a. Grouping Variable: konsentrasi

b. Not corrected for ties.

o. 0.4 % dan 2 %

Ranks

	konsentrasi	N	Mean Rank	Sum of Ranks
histogram	0.4 %	4	6.50	26.00
	2 %	4	2.50	10.00
	Total	8		



Test Statistics^a

	histogram
Mann-Whitney U	.000
Wilcoxon W	10.000
Z	-2.309
Asymp. Sig. (2-tailed)	.021
Exact Sig. [2*(1-tailed Sig.)]	.029 ^b

a. Grouping Variable: konsentrasi

b. Not corrected for ties.

p. 0.6 % dan 0.8%

Ranks

		N	Mean Rank	Sum of Ranks
histogram	0.6 %	4	6.50	26.00
	0.8 %	4	2.50	10.00
Total		8		

Test Statistics^a

	histogram
Mann-Whitney U	.000
Wilcoxon W	10.000
Z	-2.309
Asymp. Sig. (2-tailed)	.021
Exact Sig. [2*(1-tailed Sig.)]	.029 ^b

a. Grouping Variable: konsentrasi

b. Not corrected for ties.



q. 0.6 % dan 1 %

Ranks

	konsentrasi	N	Mean Rank	Sum of Ranks
histogram	0.6 %	4	6.50	26.00
	1 %	4	2.50	10.00
	Total	8		

Test Statistics^a

	histogram
Mann-Whitney U	.000
Wilcoxon W	10.000
Z	-2.309
Asymp. Sig. (2-tailed)	.021
Exact Sig. [2*(1-tailed Sig.)]	.029 ^b

a. Grouping Variable: konsentrasi

b. Not corrected for ties.

r. 0.6 % dan 2 %

Ranks

	konsentrasi	N	Mean Rank	Sum of Ranks
histogram	0.6 %	4	6.50	26.00
	2 %	4	2.50	10.00
	Total	8		



Test Statistics^a

	histogram
Mann-Whitney U	.000
Wilcoxon W	10.000
Z	-2.309
Asymp. Sig. (2-tailed)	.021
Exact Sig. [2*(1-tailed Sig.)]	.029 ^b

a. Grouping Variable: konsentrasi

b. Not corrected for ties.

s. 0.8 % dan 1 %

Ranks

	konsentrasi	N	Mean Rank	Sum of Ranks
histogram	0.8 %	4	4.25	17.00
	1 %	4	4.75	19.00
	Total	8		

Test Statistics^a

	histogram
Mann-Whitney U	7.000
Wilcoxon W	17.000
Z	-.289
Asymp. Sig. (2-tailed)	.773
Exact Sig. [2*(1-tailed Sig.)]	.886 ^b

a. Grouping Variable: konsentrasi

b. Not corrected for ties.



t. 0.8 % dan 2 %

Ranks

	konsentrasi	N	Mean Rank	Sum of Ranks
histogram	0.8 %	4	5.00	20.00
	2 %	4	4.00	16.00
	Total	8		

Test Statistics^a

	histogram
Mann-Whitney U	6.000
Wilcoxon W	16.000
Z	-.577
Asymp. Sig. (2-tailed)	.564
Exact Sig. [2*(1-tailed Sig.)]	.686 ^b

a. Grouping Variable: konsentrasi

b. Not corrected for ties.

u. 1 % dan 2 %

Ranks

	konsentrasi	N	Mean Rank	Sum of Ranks
histogram	1 %	4	5.50	22.00
	2 %	4	3.50	14.00
	Total	8		



Test Statistics^a

	histogram
Mann-Whitney U	4.000
Wilcoxon W	14.000
Z	-1.155
Asymp. Sig. (2-tailed)	.248
Exact Sig. [2*(1-tailed Sig.)]	.343 ^b

a. Grouping Variable: konsentrasi

LAMPIRAN 7. UJI KORELASI SPEARMAN

Correlations

			konsentra si	histogra m
Spearman's rho	Konsentra si	Correlation Coefficient	1.000	-.858**
		Sig. (2-tailed)	.	.000
		N	28	28
	Histogram	Correlation Coefficient	-.858**	1.000
		Sig. (2-tailed)	.000	.
		N	28	28



** . Correlation is significant at the 0.01 level (2-tailed).

INDEKS KRITERIA KORELASI

0	Tidak ada korelasi
0,00-0,25	Korelasi sangat lemah
0,25-0,50	Korelasi cukup
0,50-0,75	Korelasi kuat
0,75-0,99	Korelasi sangat kuat
1	Korelasi sempurna

*Menurut Jonathan Sarwono

