

LAMPIRAN

Lampiran 1 Uji Normalitas Kolmogorov-Smirnov

One-Sample Kolmogorov-Smirnov Test

		transform
N		24
Normal Parameters ^{a,b}	Mean	3.6427
	Std. Deviation	2.40482
Most Extreme Differences	Absolute	.152
	Positive	.106
	Negative	-.152
Kolmogorov-Smirnov Z		.747
Asymp. Sig. (2-tailed)		.633

a. Test distribution is Normal.

b. Calculated from data.

Lampiran 2 Uji homogenitas Data

Test of Homogeneity of Variance^a

		Levene Statistic	df1	df2	Sig.
transform	Based on Mean	1.014	4	15	.431
	Based on Median	.879	4	15	.500
	Based on Median and with adjusted df	.879	4	10.844	.508
	Based on trimmed mean	1.026	4	15	.426

a. transform is constant when konsentrasi = 27,5%. It has been omitted.

Lampiran 3 Uji One-way Anova

ANOVA

Transform

	Sum of Squares	df	Mean Square	F	Sig.
Between Groups	132.691	5	26.538	1488.451	.000
Within Groups	.321	18	.018		
Total	133.012	23			



Lampiran 4 Uji Descriptive

Descriptives

transform

	N	Mean	Std. Deviation	Std. Error	95% Confidence Interval for Mean		Minimum	Maximum
					Lower Bound	Upper Bound		
					0%	4		
17,5%	4	5.6591	.07503	.03751	5.5398	5.7785	5.55	5.73
20%	4	4.8309	.17690	.08845	4.5494	5.1124	4.58	4.99
22,5%	4	2.8059	.18470	.09235	2.5120	3.0998	2.56	3.00
25%	4	1.7391	.16245	.08122	1.4806	1.9976	1.61	1.95
27,5%	4	.0000	.00000	.00000	.0000	.0000	.00	.00
Total	24	3.6427	2.40482	.49088	2.6272	4.6582	.00	6.94

Lampiran 5 Uji Multiple Comparisons Post hoc Bonferroni & Games-Howell

Multiple Comparisons

Dependent Variable:transform

	(I)	(J)	Mean Difference (I-J)	Std. Error	Sig.	95% Confidence Interval	
						Lower Bound	Upper Bound
Bonferroni	0%	17,5%	1.16189*	.09442	.000	.8427	1.4811
		20%	1.99012*	.09442	.000	1.6710	2.3093
		22,5%	4.01513*	.09442	.000	3.6960	4.3343
		25%	5.08191*	.09442	.000	4.7627	5.4011
		27,5%	6.82104*	.09442	.000	6.5019	7.1402
	17,5%	0%	-1.16189*	.09442	.000	-1.4811	-.8427
		20%	.82822*	.09442	.000	.5091	1.1474
		22,5%	2.85324*	.09442	.000	2.5341	3.1724
		25%	3.92001*	.09442	.000	3.6008	4.2392
		27,5%	5.65915*	.09442	.000	5.3400	5.9783
	20%	0%	-1.99012*	.09442	.000	-2.3093	-1.6710
		17,5%	-.82822*	.09442	.000	-1.1474	-.5091



		22,5%	2.02501 ⁺	.09442	.000	1.7058	2.3442
		25%	3.09179 ⁺	.09442	.000	2.7726	3.4110
		27,5%	4.83092 ⁺	.09442	.000	4.5118	5.1501
	22,5%	0%	-4.01513 ⁺	.09442	.000	-4.3343	-3.6960
		17,5%	-2.85324 ⁺	.09442	.000	-3.1724	-2.5341
		20%	-2.02501 ⁺	.09442	.000	-2.3442	-1.7058
		25%	1.06677 ⁺	.09442	.000	.7476	1.3859
		27,5%	2.80591 ⁺	.09442	.000	2.4867	3.1251
	25%	0%	-5.08191 ⁺	.09442	.000	-5.4011	-4.7627
		17,5%	-3.92001 ⁺	.09442	.000	-4.2392	-3.6008
		20%	-3.09179 ⁺	.09442	.000	-3.4110	-2.7726
		22,5%	-1.06677 ⁺	.09442	.000	-1.3859	-.7476
		27,5%	1.73914 ⁺	.09442	.000	1.4200	2.0583
	27,5%	0%	-6.82104 ⁺	.09442	.000	-7.1402	-6.5019
		17,5%	-5.65915 ⁺	.09442	.000	-5.9783	-5.3400
		20%	-4.83092 ⁺	.09442	.000	-5.1501	-4.5118
		22,5%	-2.80591 ⁺	.09442	.000	-3.1251	-2.4867
		25%	-1.73914 ⁺	.09442	.000	-2.0583	-1.4200
Games- Howell	0%	17,5%	1.16189 ⁺	.06161	.000	.9110	1.4128
		20%	1.99012 ⁺	.10105	.000	1.5463	2.4340
		22,5%	4.01513 ⁺	.10448	.000	3.5509	4.4794
		25%	5.08191 ⁺	.09479	.000	4.6748	5.4890
		27,5%	6.82104 ⁺	.04887	.000	6.5433	7.0988
	17,5%	0%	-1.16189 ⁺	.06161	.000	-1.4128	-.9110
		20%	.82822 ⁺	.09607	.006	.3754	1.2811
		22,5%	2.85324 ⁺	.09968	.000	2.3782	3.3282
		25%	3.92001 ⁺	.08947	.000	3.5076	4.3325
		27,5%	5.65915 ⁺	.03751	.000	5.4460	5.8723
	20%	0%	-1.99012 ⁺	.10105	.000	-2.4340	-1.5463
		17,5%	-.82822 ⁺	.09607	.006	-1.2811	-.3754
		22,5%	2.02501 ⁺	.12787	.000	1.5158	2.5342



	25%	3.09179*	.12008	.000	2.6127	3.5709
	27,5%	4.83092*	.08845	.000	4.3283	5.3336
22,5%	0%	-4.01513*	.10448	.000	-4.4794	-3.5509
	17,5%	-2.85324*	.09968	.000	-3.3282	-2.3782
	20%	-2.02501*	.12787	.000	-2.5342	-1.5158
	25%	1.06677*	.12299	.001	.5745	1.5590
	27,5%	2.80591*	.09235	.000	2.2811	3.3307
25%	0%	-5.08191*	.09479	.000	-5.4890	-4.6748
	17,5%	-3.92001*	.08947	.000	-4.3325	-3.5076
	20%	-3.09179*	.12008	.000	-3.5709	-2.6127
	22,5%	-1.06677*	.12299	.001	-1.5590	-.5745
	27,5%	1.73914*	.08122	.001	1.2775	2.2007
27,5%	0%	-6.82104*	.04887	.000	-7.0988	-6.5433
	17,5%	-5.65915*	.03751	.000	-5.8723	-5.4460
	20%	-4.83092*	.08845	.000	-5.3336	-4.3283
	22,5%	-2.80591*	.09235	.000	-3.3307	-2.2811
	25%	-1.73914*	.08122	.001	-2.2007	-1.2775

*. The mean difference is significant at the 0.05 level.

Lampiran 6 Uji Korelasi Spearman

Correlations			transform	konsentrasi
Spearman's rho	transform	Correlation Coefficient	1.000	-.989**
		Sig. (2-tailed)	.	.000
		N	24	24
	konsentrasi	Correlation Coefficient	-.989**	1.000
		Sig. (2-tailed)	.000	.
		N	24	24

** . Correlation is significant at the 0.01 level (2-tailed).

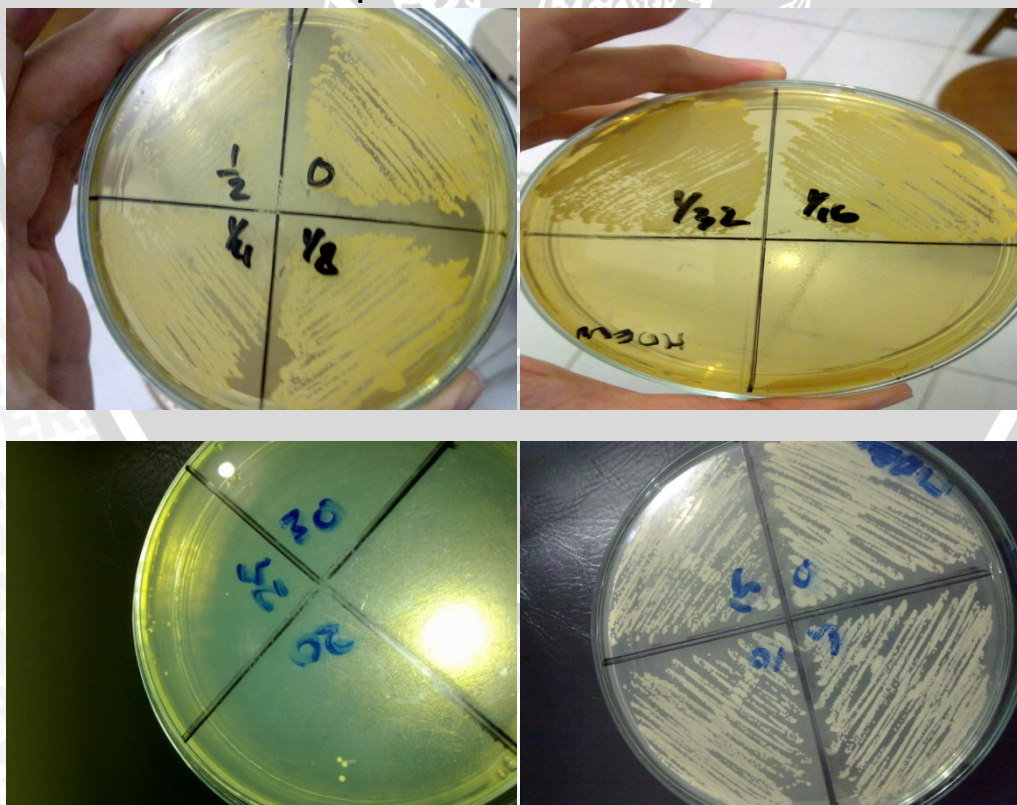
Lampiran 7 Tabel Standar Deviasi

Report

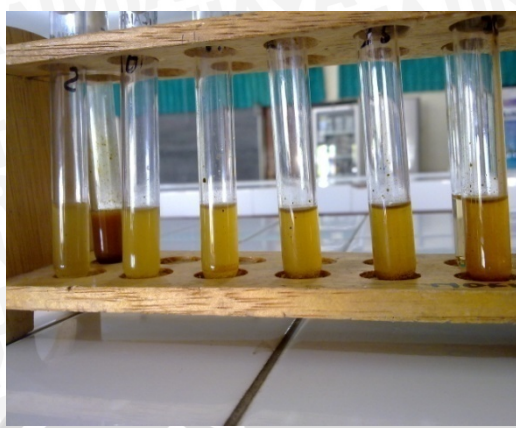
konsentrasi	Mean	N	Std. Deviation
0%	919.25	4	90.691
17,5%	286.50	4	21.016
20%	125.75	4	21.172
22,5%	15.75	4	2.986
25%	4.75	4	.957
27,5%	.00	4	.000
Total	225.33	24	335.022

Lampiran 8 Gambar Hasil Penelitian

8.1 Hasil Penelitian Eksplorasi



8.2 Dilusi Tabung



8.3 Penghitungan Dengan Colony Counter

