

LAMPIRAN

LAMPIRAN 1. Perhitungan Pemakaian Konsentrasi Ekstrak Bunga Cengkeh
(*Syzygium aromaticum*)

Volume total dalam *plate* agar diasumsikan sebesar 10 ml yang terdiri dari volume ekstrak bunga cengkeh dan volume agar. Konsentrasi ekstrak bunga cengkeh yang digunakan dalam penelitian ini ialah 0,1%; 0,2%; 0,3%; 0,4%; 0,5%; 0,6%; 0,7%; dan 0,8% maka dapat dihitung volume ekstrak bunga cengkeh yang digunakan setiap konsentrasi pada tabel di bawah ini :

Tabel 1 Perhitungan Volume Ekstrak Bunga Cengkeh dan Agar

Konsentrasi	Volume Ekstrak Bunga Cengkeh	Volume Agar
0,1%	$0,1\% \times 10 \text{ ml} = 0,01 \text{ ml}$	$10 - 0,01 = 9,99 \text{ ml}$
0,2%	$0,2\% \times 10 \text{ ml} = 0,02 \text{ ml}$	$10 - 0,02 = 9,98 \text{ ml}$
0,3%	$0,3\% \times 10 \text{ ml} = 0,03 \text{ ml}$	$10 - 0,03 = 9,97 \text{ ml}$
0,4%	$0,4\% \times 10 \text{ ml} = 0,04 \text{ ml}$	$10 - 0,04 = 9,96 \text{ ml}$
0,5%	$0,5\% \times 10 \text{ ml} = 0,05 \text{ ml}$	$10 - 0,05 = 9,95 \text{ ml}$
0,6%	$0,6\% \times 10 \text{ ml} = 0,06 \text{ ml}$	$10 - 0,06 = 9,94 \text{ ml}$
0,7%	$0,7\% \times 10 \text{ ml} = 0,07 \text{ ml}$	$10 - 0,07 = 9,93 \text{ ml}$
0,8%	$0,8\% \times 10 \text{ ml} = 0,08 \text{ ml}$	$10 - 0,08 = 9,92 \text{ ml}$

LAMPIRAN 2. Statistika Frekuensi

Statistics

		konsentrasi	pengulangan	pertumbuhan bakteri
N	Valid	36	36	36
	Missing	0	0	0

Tabel Frekuensi Konsentrasi

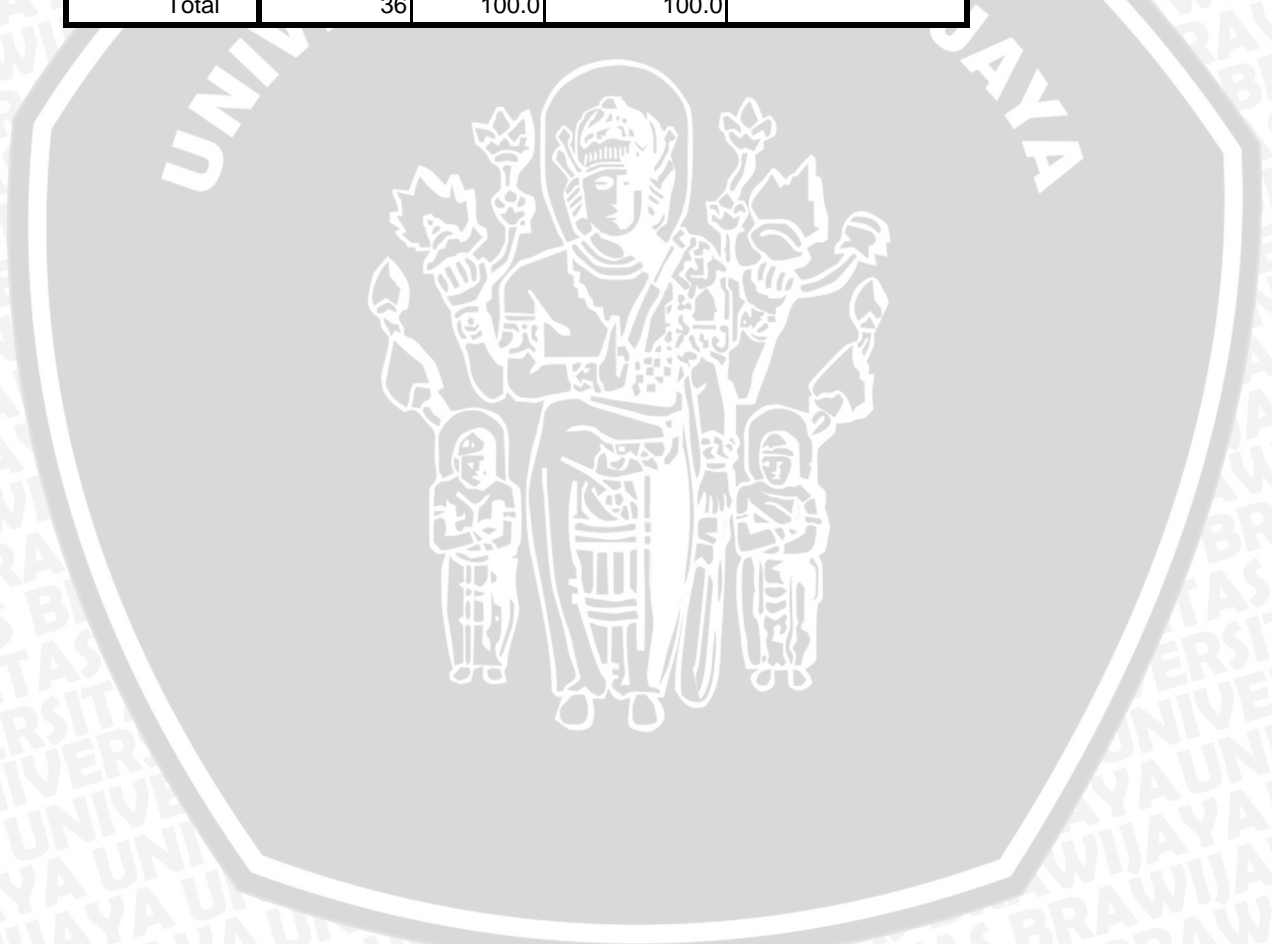
		Frequency	Percent	Valid Percent	Cumulative Percent
Valid	0%	4	11.1	11.1	11.1
	0,1%	4	11.1	11.1	22.2
	0,2%	4	11.1	11.1	33.3
	0,3%	4	11.1	11.1	44.4
	0,4%	4	11.1	11.1	55.6
	0,5%	4	11.1	11.1	66.7
	0,6%	4	11.1	11.1	77.8
	0,7%	4	11.1	11.1	88.9
	0,8%	4	11.1	11.1	100.0
	Total	36	100.0	100.0	

Tabel Frekuensi Pengulangan

		Frequency	Percent	Valid Percent	Cumulative Percent
Valid	1	9	25.0	25.0	25.0
	2	9	25.0	25.0	50.0
	3	9	25.0	25.0	75.0
	4	9	25.0	25.0	100.0
	Total	36	100.0	100.0	

Tabel Frekuensi Pertumbuhan Bakteri

		Frequency	Percent	Valid Percent	Cumulative Percent
Valid	0	27	75.0	75.0	75.0
	+1	3	8.3	8.3	83.3
	+2	1	2.8	2.8	86.1
	+3	5	13.9	13.9	100.0
	Total	36	100.0	100.0	



LAMPIRAN 3. Hasil Uji Kruskal Wallis

**NPar Test
Kruskal-Wallis Test**

Ranks			
	konsentrasi	N	Mean Rank
pertumbuhan bakteri	0	4	33.50
	0,1 %	4	31.38
	0,2 %	4	17.62
	0,3 %	4	14.00
	0,4 %	4	14.00
	0,5 %	4	14.00
	0,6 %	4	14.00
	0,7 %	4	14.00
	0,8 %	4	14.00
	Total		36

Test Statistics ^{a,b}	
	pertumbuhan bakteri
Chi-Square	32.223
df	8
Asymp. Sig.	.000

a. Kruskal Wallis Test

b. Grouping Variable: konsentrasi



LAMPIRAN 4. Hasil Uji Mann Whitney

NPar Tests

Mann-Whitney

Ranks

	konsentrasi	N	Mean Rank	Sum of Ranks
pertumbuhan bakteri	0%	4	6.00	24.00
	0,1%	4	3.00	12.00
	Total	8		

Test Statistics^b

	pertumbuhan bakteri
Mann-Whitney U	2.000
Wilcoxon W	12.000
Z	-2.000
Asymp. Sig. (2-tailed)	.046
Exact Sig. [2*(1-tailed Sig.)]	.114 ^a

Ranks

	Konsentrasi	N	Mean Rank	Sum of Ranks
pertumbuhan bakteri	0%	4	6.50	26.00
	0,2%	4	2.50	10.00
	Total	8		

Test Statistics^b

	pertumbuhan bakteri
Mann-Whitney U	.000
Wilcoxon W	10.000
Z	-2.530
Asymp. Sig. (2-tailed)	.011
Exact Sig. [2*(1-tailed Sig.)]	.029 ^a



Ranks

	Konsentrasi	N	Mean Rank	Sum of Ranks
pertumbuhan bakteri	0%	4	6.50	26.00
	0,3%	4	2.50	10.00
	Total	8		

Test Statistics^b

	pertumbuhan bakteri
Mann-Whitney U	.000
Wilcoxon W	10.000
Z	-2.646
Asymp. Sig. (2-tailed)	.008
Exact Sig. [2*(1-tailed Sig.)]	.029 ^a

Ranks

	Konsentrasi	N	Mean Rank	Sum of Ranks
pertumbuhan bakteri	0%	4	6.50	26.00
	0,4%	4	2.50	10.00
	Total	8		

Test Statistics^b

	pertumbuhan bakteri
Mann-Whitney U	.000
Wilcoxon W	10.000
Z	-2.646
Asymp. Sig. (2-tailed)	.008
Exact Sig. [2*(1-tailed Sig.)]	.029 ^a



Ranks

	Konsentrasi	N	Mean Rank	Sum of Ranks
pertumbuhan bakteri	0%	4	6.50	26.00
	0,5%	4	2.50	10.00
	Total	8		

Test Statistics^b

	pertumbuhan bakteri
Mann-Whitney U	.000
Wilcoxon W	10.000
Z	-2.646
Asymp. Sig. (2-tailed)	.008
Exact Sig. [2*(1-tailed Sig.)]	.029 ^a

Ranks

	Konsentrasi	N	Mean Rank	Sum of Ranks
pertumbuhan bakteri	0%	4	6.50	26.00
	0,6%	4	2.50	10.00
	Total	8		

Test Statistics^b

	pertumbuhan bakteri
Mann-Whitney U	.000
Wilcoxon W	10.000
Z	-2.646
Asymp. Sig. (2-tailed)	.008
Exact Sig. [2*(1-tailed Sig.)]	.029 ^a



Ranks

	Konsentrasi	N	Mean Rank	Sum of Ranks
pertumbuhan bakteri	0%	4	6.50	26.00
	0,7%	4	2.50	10.00
	Total	8		

Test Statistics^b

	pertumbuhan bakteri
Mann-Whitney U	.000
Wilcoxon W	10.000
Z	-2.646
Asymp. Sig. (2-tailed)	.008
Exact Sig. [2*(1-tailed Sig.)]	.029 ^a

Ranks

	Konsentrasi	N	Mean Rank	Sum of Ranks
pertumbuhan bakteri	0%	4	6.50	26.00
	0,8%	4	2.50	10.00
	Total	8		

Test Statistics^b

	pertumbuhan bakteri
Mann-Whitney U	.000
Wilcoxon W	10.000
Z	-2.646
Asymp. Sig. (2-tailed)	.008
Exact Sig. [2*(1-tailed Sig.)]	.029 ^a



Ranks

	Konsentrasi	N	Mean Rank	Sum of Ranks
pertumbuhan bakteri	0,1%	4	6.25	25.00
	0,2%	4	2.75	11.00
	Total	8		

Test Statistics^b

	pertumbuhan bakteri
Mann-Whitney U	1.000
Wilcoxon W	11.000
Z	-2.124
Asymp. Sig. (2-tailed)	.034
Exact Sig. [2*(1-tailed Sig.)]	.057 ^a

Ranks

	Konsentrasi	N	Mean Rank	Sum of Ranks
pertumbuhan bakteri	0,1%	4	6.50	26.00
	0,3%	4	2.50	10.00
	Total	8		

Test Statistics^b

	pertumbuhan bakteri
Mann-Whitney U	.000
Wilcoxon W	10.000
Z	-2.477
Asymp. Sig. (2-tailed)	.013
Exact Sig. [2*(1-tailed Sig.)]	.029 ^a



Ranks

	Konsentrasi	N	Mean Rank	Sum of Ranks
pertumbuhan bakteri	0,1%	4	6.50	26.00
	0,4%	4	2.50	10.00
	Total	8		

Test Statistics^b

	pertumbuhan bakteri
Mann-Whitney U	.000
Wilcoxon W	10.000
Z	-2.477
Asymp. Sig. (2-tailed)	.013
Exact Sig. [2*(1-tailed Sig.)]	.029 ^a

Ranks

	Konsentrasi	N	Mean Rank	Sum of Ranks
pertumbuhan bakteri	0,1%	4	6.50	26.00
	0,5%	4	2.50	10.00
	Total	8		

Test Statistics^b

	pertumbuhan bakteri
Mann-Whitney U	.000
Wilcoxon W	10.000
Z	-2.477
Asymp. Sig. (2-tailed)	.013
Exact Sig. [2*(1-tailed Sig.)]	.029 ^a



Ranks

	Konsentrasi	N	Mean Rank	Sum of Ranks
pertumbuhan bakteri	0,1%	4	6.50	26.00
	0,6%	4	2.50	10.00
	Total	8		

Test Statistics^b

	pertumbuhan bakteri
Mann-Whitney U	.000
Wilcoxon W	10.000
Z	-2.477
Asymp. Sig. (2-tailed)	.013
Exact Sig. [2*(1-tailed Sig.)]	.029 ^a

Ranks

	Konsentrasi	N	Mean Rank	Sum of Ranks
pertumbuhan bakteri	0,1%	4	6.50	26.00
	0,7%	4	2.50	10.00
	Total	8		

Test Statistics^b

	pertumbuhan bakteri
Mann-Whitney U	.000
Wilcoxon W	10.000
Z	-2.477
Asymp. Sig. (2-tailed)	.013
Exact Sig. [2*(1-tailed Sig.)]	.029 ^a



Ranks

	Konsentrasi	N	Mean Rank	Sum of Ranks
pertumbuhan bakteri	0,1%	4	6.50	26.00
	0,8%	4	2.50	10.00
	Total	8		

Test Statistics^b

	pertumbuhan bakteri
Mann-Whitney U	.000
Wilcoxon W	10.000
Z	-2.477
Asymp. Sig. (2-tailed)	.013
Exact Sig. [2*(1-tailed Sig.)]	.029 ^a

Ranks

	Konsentrasi	N	Mean Rank	Sum of Ranks
pertumbuhan bakteri	0,2%	4	5.00	20.00
	0,3%	4	4.00	16.00
	Total	8		

Test Statistics^b

	pertumbuhan bakteri
Mann-Whitney U	6.000
Wilcoxon W	16.000
Z	-1.000
Asymp. Sig. (2-tailed)	.317
Exact Sig. [2*(1-tailed Sig.)]	.686 ^a



Ranks

	Konsentrasi	N	Mean Rank	Sum of Ranks
pertumbuhan bakteri	0,2%	4	5.00	20.00
	0,4%	4	4.00	16.00
	Total	8		

Test Statistics^b

	pertumbuhan bakteri
Mann-Whitney U	6.000
Wilcoxon W	16.000
Z	-1.000
Asymp. Sig. (2-tailed)	.317
Exact Sig. [2*(1-tailed Sig.)]	.686 ^a

Ranks

	Konsentrasi	N	Mean Rank	Sum of Ranks
pertumbuhan bakteri	0,2%	4	5.00	20.00
	0,5%	4	4.00	16.00
	Total	8		

Test Statistics^b

	pertumbuhan bakteri
Mann-Whitney U	6.000
Wilcoxon W	16.000
Z	-1.000
Asymp. Sig. (2-tailed)	.317
Exact Sig. [2*(1-tailed Sig.)]	.686 ^a

Ranks

	Konsentrasi	N	Mean Rank	Sum of Ranks
pertumbuhan bakteri	0,2%	4	5.00	20.00
	0,6%	4	4.00	16.00
	Total	8		

Test Statistics^b

	pertumbuhan bakteri
Mann-Whitney U	6.000
Wilcoxon W	16.000
Z	-1.000
Asymp. Sig. (2-tailed)	.317
Exact Sig. [2*(1-tailed Sig.)]	.686 ^a

Ranks

	Konsentrasi	N	Mean Rank	Sum of Ranks
pertumbuhan bakteri	0,2%	4	5.00	20.00
	0,7%	4	4.00	16.00
	Total	8		

Test Statistics^b

	pertumbuhan bakteri
Mann-Whitney U	6.000
Wilcoxon W	16.000
Z	-1.000
Asymp. Sig. (2-tailed)	.317
Exact Sig. [2*(1-tailed Sig.)]	.686 ^a



Ranks

	Konsentrasi	N	Mean Rank	Sum of Ranks
pertumbuhan bakteri	0,2%	4	5.00	20.00
	0,8%	4	4.00	16.00
	Total	8		

Test Statistics^b

	pertumbuhan bakteri
Mann-Whitney U	6.000
Wilcoxon W	16.000
Z	-1.000
Asymp. Sig. (2-tailed)	.317
Exact Sig. [2*(1-tailed Sig.)]	.686 ^a

Ranks

	Konsentrasi	N	Mean Rank	Sum of Ranks
pertumbuhan bakteri	0,3%	4	4.50	18.00
	0,4%	4	4.50	18.00
	Total	8		

Test Statistics^b

	pertumbuhan bakteri
Mann-Whitney U	8.000
Wilcoxon W	18.000
Z	.000
Asymp. Sig. (2-tailed)	1.000
Exact Sig. [2*(1-tailed Sig.)]	1.000 ^a



Ranks

	Konsentrasi	N	Mean Rank	Sum of Ranks
pertumbuhan bakteri	0,3%	4	4.50	18.00
	0,5%	4	4.50	18.00
	Total	8		

Test Statistics^b

	pertumbuhan bakteri
Mann-Whitney U	8.000
Wilcoxon W	18.000
Z	.000
Asymp. Sig. (2-tailed)	1.000
Exact Sig. [2*(1-tailed Sig.)]	1.000 ^a

Ranks

	Konsentrasi	N	Mean Rank	Sum of Ranks
pertumbuhan bakteri	0,3%	4	4.50	18.00
	0,6%	4	4.50	18.00
	Total	8		

Test Statistics^b

	pertumbuhan bakteri
Mann-Whitney U	8.000
Wilcoxon W	18.000
Z	.000
Asymp. Sig. (2-tailed)	1.000
Exact Sig. [2*(1-tailed Sig.)]	1.000 ^a



Ranks

	Konsentrasi	N	Mean Rank	Sum of Ranks
pertumbuhan bakteri	0,3%	4	4.50	18.00
	0,7%	4	4.50	18.00
	Total	8		

Test Statistics^b

	pertumbuhan bakteri
Mann-Whitney U	8.000
Wilcoxon W	18.000
Z	.000
Asymp. Sig. (2-tailed)	1.000
Exact Sig. [2*(1-tailed Sig.)]	1.000 ^a

Ranks

	Konsentrasi	N	Mean Rank	Sum of Ranks
pertumbuhan bakteri	0,3%	4	4.50	18.00
	0,8%	4	4.50	18.00
	Total	8		

Test Statistics^b

	pertumbuhan bakteri
Mann-Whitney U	8.000
Wilcoxon W	18.000
Z	.000
Asymp. Sig. (2-tailed)	1.000
Exact Sig. [2*(1-tailed Sig.)]	1.000 ^a



Ranks

	Konsentrasi	N	Mean Rank	Sum of Ranks
pertumbuhan bakteri	0,4%	4	4.50	18.00
	0,5%	4	4.50	18.00
	Total	8		

Test Statistics^b

	pertumbuhan bakteri
Mann-Whitney U	8.000
Wilcoxon W	18.000
Z	.000
Asymp. Sig. (2-tailed)	1.000
Exact Sig. [2*(1-tailed Sig.)]	1.000 ^a

Ranks

	Konsentrasi	N	Mean Rank	Sum of Ranks
pertumbuhan bakteri	0,4%	4	4.50	18.00
	0,6%	4	4.50	18.00
	Total	8		

Test Statistics^b

	pertumbuhan bakteri
Mann-Whitney U	8.000
Wilcoxon W	18.000
Z	.000
Asymp. Sig. (2-tailed)	1.000
Exact Sig. [2*(1-tailed Sig.)]	1.000 ^a



Ranks

	Konsentrasi	N	Mean Rank	Sum of Ranks
pertumbuhan bakteri	0,4%	4	4.50	18.00
	0,7%	4	4.50	18.00
	Total	8		

Test Statistics^b

	pertumbuhan bakteri
Mann-Whitney U	8.000
Wilcoxon W	18.000
Z	.000
Asymp. Sig. (2-tailed)	1.000
Exact Sig. [2*(1-tailed Sig.)]	1.000 ^a

Ranks

	Konsentrasi	N	Mean Rank	Sum of Ranks
pertumbuhan bakteri	0,4%	4	4.50	18.00
	0,8%	4	4.50	18.00
	Total	8		

Test Statistics^b

	pertumbuhan bakteri
Mann-Whitney U	8.000
Wilcoxon W	18.000
Z	.000
Asymp. Sig. (2-tailed)	1.000
Exact Sig. [2*(1-tailed Sig.)]	1.000 ^a



Ranks

	Konsentrasi	N	Mean Rank	Sum of Ranks
pertumbuhan bakteri	0,5%	4	4.50	18.00
	0,6%	4	4.50	18.00
	Total	8		

Test Statistics^b

	pertumbuhan bakteri
Mann-Whitney U	8.000
Wilcoxon W	18.000
Z	.000
Asymp. Sig. (2-tailed)	1.000
Exact Sig. [2*(1-tailed Sig.)]	1.000 ^a

Ranks

	Konsentrasi	N	Mean Rank	Sum of Ranks
pertumbuhan bakteri	0,5%	4	4.50	18.00
	0,7%	4	4.50	18.00
	Total	8		

Test Statistics^b

	pertumbuhan bakteri
Mann-Whitney U	8.000
Wilcoxon W	18.000
Z	.000
Asymp. Sig. (2-tailed)	1.000
Exact Sig. [2*(1-tailed Sig.)]	1.000 ^a



Ranks

	Konsentrasi	N	Mean Rank	Sum of Ranks
pertumbuhan bakteri	0,5%	4	4.50	18.00
	0,8%	4	4.50	18.00
	Total	8		

Test Statistics^b

	pertumbuhan bakteri
Mann-Whitney U	8.000
Wilcoxon W	18.000
Z	.000
Asymp. Sig. (2-tailed)	1.000
Exact Sig. [2*(1-tailed Sig.)]	1.000 ^a

Ranks

	Konsentrasi	N	Mean Rank	Sum of Ranks
pertumbuhan bakteri	0,6%	4	4.50	18.00
	0,7%	4	4.50	18.00
	Total	8		

Test Statistics^b

	pertumbuhan bakteri
Mann-Whitney U	8.000
Wilcoxon W	18.000
Z	.000
Asymp. Sig. (2-tailed)	1.000
Exact Sig. [2*(1-tailed Sig.)]	1.000 ^a



Ranks

	Konsentrasi	N	Mean Rank	Sum of Ranks
pertumbuhan bakteri	0,6%	4	4.50	18.00
	0,8%	4	4.50	18.00
	Total	8		

Test Statistics^b

	pertumbuhan bakteri
Mann-Whitney U	8.000
Wilcoxon W	18.000
Z	.000
Asymp. Sig. (2-tailed)	1.000
Exact Sig. [2*(1-tailed Sig.)]	1.000 ^a

Ranks

	Konsentrasi	N	Mean Rank	Sum of Ranks
pertumbuhan bakteri	0,7%	4	4.50	18.00
	0,8%	4	4.50	18.00
	Total	8		

Test Statistics^b

	pertumbuhan bakteri
Mann-Whitney U	8.000
Wilcoxon W	18.000
Z	.000
Asymp. Sig. (2-tailed)	1.000
Exact Sig. [2*(1-tailed Sig.)]	1.000 ^a



LAMPIRAN 5. Hasil Uji Korelasi Spearman

Correlations

			konsentrasi	pertumbuhan bakteri
Spearman's rho	Konsentrasi	Correlation Coefficient	1.000	-.751**
		Sig. (2-tailed)	.	.000
		N	36	36
pertumbuhan bakteri	Konsentrasi	Correlation Coefficient	-.751**	1.000
		Sig. (2-tailed)	.000	.
		N	36	36

** . Correlation is significant at the 0.01 level (2-tailed).



LAMPIRAN 6. Dokumentasi



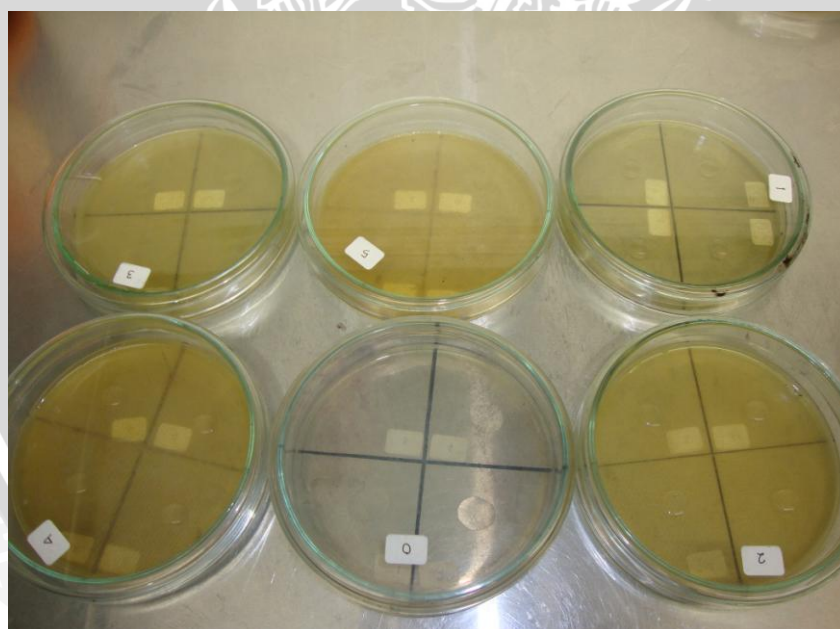
Gambar 1. Endapan Ekstrak Bunga Cengkeh dalam Larutan dan Tampak Keruh



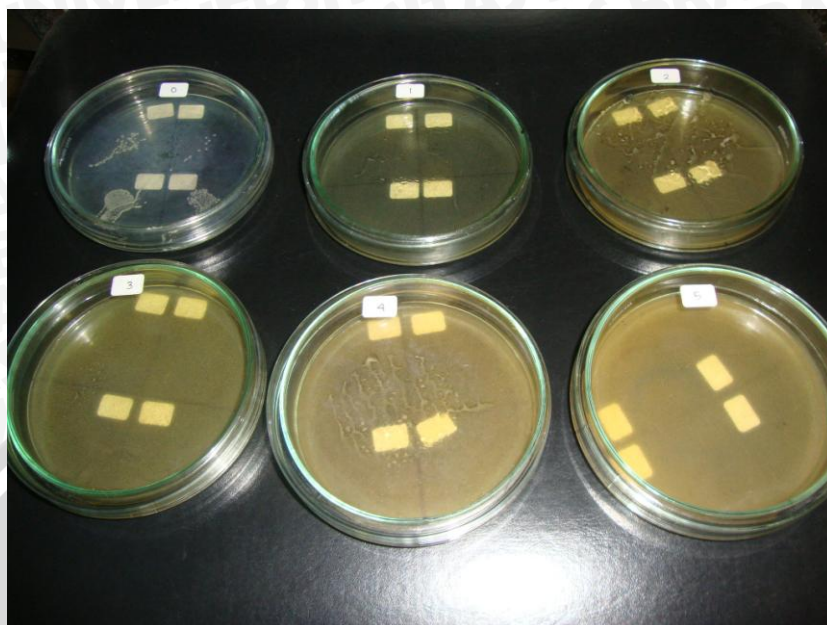
Gambar 2. Mikropipet



Gambar 3. Plate Agar + Ekstrak Bunga Cengkeh pada Konsentrasi Pendahuluan



Gambar 4. Plate Agar + Ekstrak Bunga Cengkeh yang Sudah Ditetesi Bakteri *Staphylococcus aureus* pada Konsentrasi Pendahuluan



Gambar 5. Hasil Pertumbuhan Bakteri *Staphylococcus aureus* pada Penelitian Pendahuluan

