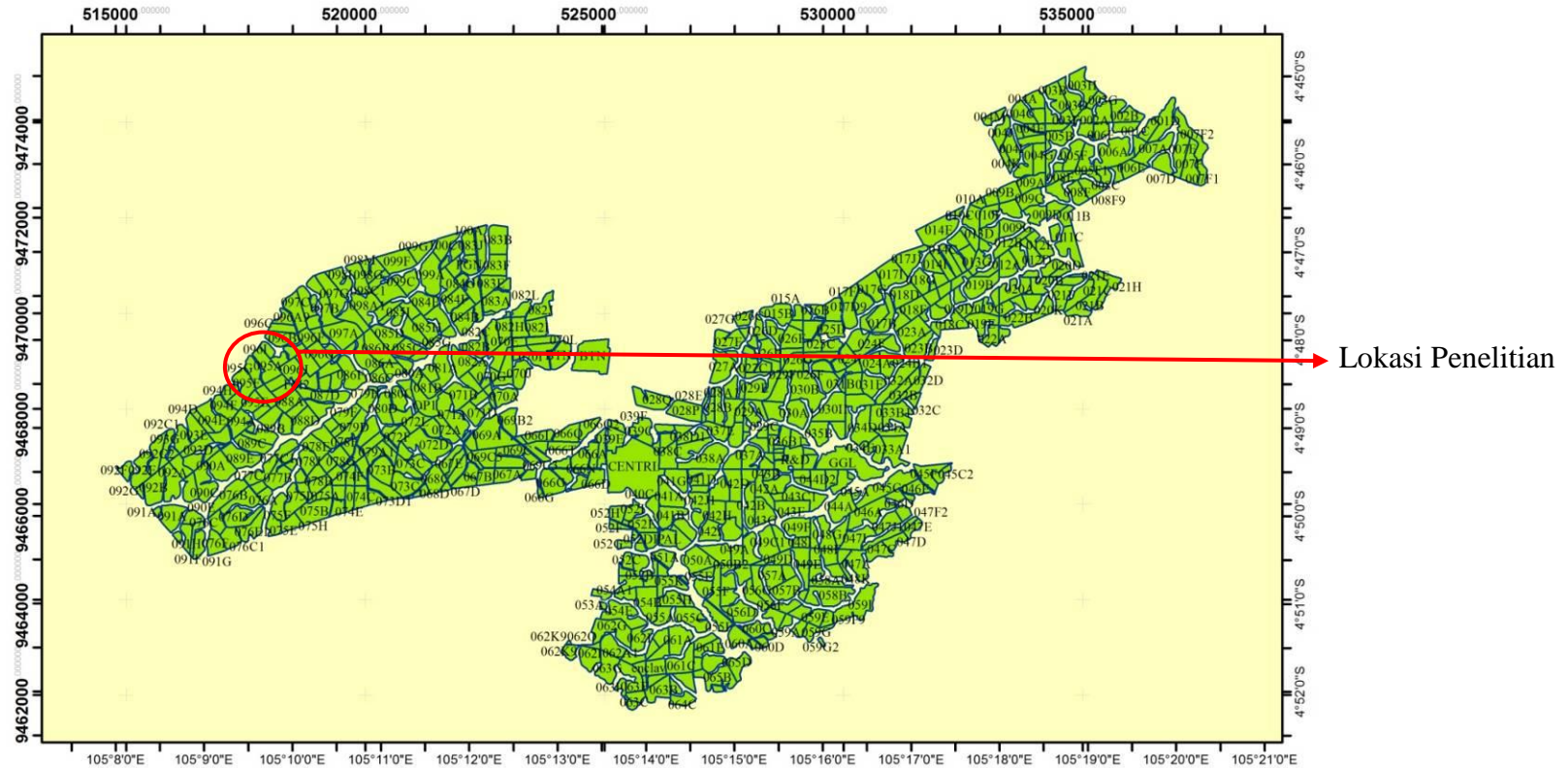


LAMPIRAN

Lampiran 1. Peta lokasi PG 1 PT. Great Giant Pineapple

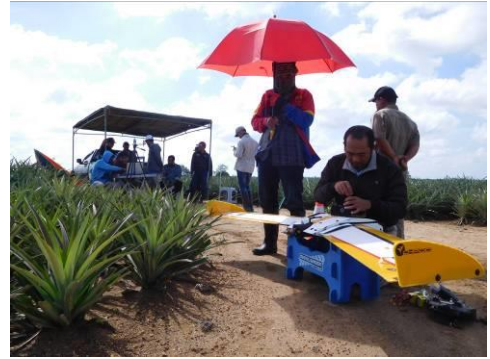


	<h3>PETA LOKASI PG 1 PT. GREAT GIANT PINEAPPLE</h3>	Legenda  Batas lokasi
	 	Universe Transverse Mercator and Geographic system WGS 1984 48 S

Lampiran 2. Dokumentasi penelitian



Briefing penerbangan UAV



Persiapan penerbangan UAV



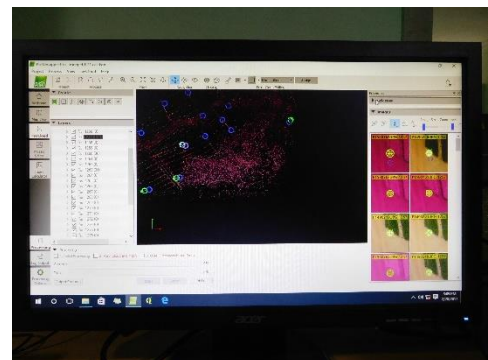
Pemindahan foto dari drone ke PC



Pengambilan sampel tanah dan daun



Analisis Laboratorium



Pre-processing Foto Udara

Lampiran 3. Analisis statistik

Uji Korelasi

		K	Mg	NDVI	GNDVI	R	G	B	NIR
K	Pearson Correlation	1	-.099	-.253	-.469*	.170	.113	.447*	-.425*
Mg	Pearson Correlation	-.099	1	.401*	.357	-.377	-.269	-.355	.129
GDVI	Pearson Correlation	-.475*	.402*	.910**	.935**	-.821**	-.826**	-.905**	.447*
NDVI	Pearson Correlation	-.253	.401*	1	.886**	-.979**	-.948**	-.898**	.098
GNDVI	Pearson Correlation	-.469*	.357	.886**	1	-.812**	-.847**	-.988**	.353
R	Pearson Correlation	.170	-.377	-.979**	-.812**	1	.951**	.854**	.100
G	Pearson Correlation	.113	-.269	-.948**	-.847**	.951**	1	.876**	-.002
B	Pearson Correlation	.447*	-.355	-.898**	-.988**	.854**	.876**	1	-.217
NIR	Pearson Correlation	-.425*	.129	.098	.353	.100	-.002	-.217	1

*. Correlation is significant at the 0.05 level (1-tailed).

** . Correlation is significant at the 0.01 level (1-tailed).

Uji regresi K - GNDVI

Model Summary^b

Model	R	R Square	Adjusted R Square	Root Mean Standard Error
1	.469 ^a	.220	.177	.1634

a. Predictors: (Constant), GNDVI

b. Dependent Variable: K

Coefficients^a

Model		Unstandardized Coefficients		Standardized Coefficients	t	Sig.
		B	Std. Error	Beta		
1	(Constant)	3.342	.352		9.504	.000
	GNDVI	-1.501	.6\65	-.469	-2.255	.037

a. Dependent Variable: K

Uji regresi K - BAND (BLUE and NIR)

Model Summary^b

Model	R	R Square	Adjusted R Square	Root Mean Standard Error
1	.559 ^a	.312	.232	.1590

a. Predictors: (Constant), NIR, B

b. Dependent Variable: K

Coefficients^a

Model		Unstandardized Coefficients		Standardized Coefficients	t	Sig.
		B	Std. Error	Beta		
1	(Constant)	4.399	1.460		3.014	.008
	B	.008	.005	.372	1.804	.089
	NIR	-.013	.008	-.345	-1.672	.113

a. Dependent Variable: K

Uji regresi MG - NDVI

Model Summary^b

Model	R	R Square	Adjusted R Square	Root Mean Standard Error
1	.401 ^a	.160	.114	.0342

a. Predictors: (Constant), NDVI

b. Dependent Variable: Mg

Coefficients^a

Model		Unstandardized Coefficients		Standardized Coefficients	t	Sig.
		B	Std. Error	Beta		
1	(Constant)	.083	.068		1.230	.234
	NDVI	.288	.155	.401	1.854	.080

a. Dependent Variable: Mg

Lampiran 4. Data sebaran unsur hara kalium dan magnesum dalam tanah

Kode Titik	Koordinat		Kalium (%)	Magnesium (%)
	X	Y		
1	518022,155	9468931,556	0,00327	0,00072
2	517919,194	9468920,056	0,00401	0,00524
3	517902,813	9468909,985	0,00375	0,00286
4	517863,225	9468989,415	0,00420	0,00300
5	517849,885	9468980,817	0,00307	0,00258
6	517995,485	9468734,257	0,00524	0,00116
7	518083,463	9468712,622	0,00440	0,00096
8	518023,243	9468785,533	0,00472	0,00083
9	517836,957	9469078,260	0,00617	0,00943
10	517756,215	9469171,927	0,00660	0,00413
11	517738,372	9469172,932	0,00386	0,00122
12	518025,559	9468924,441	0,00266	0,00251
13	517743,220	9469165,991	0,00265	0,00081
14	517751,986	9469219,755	0,00347	0,00039
15	517790,571	9469204,330	0,00413	0,00290
16	517842,101	9469134,192	0,00213	0,00110
17	517833,051	9469122,585	0,00529	0,00818
18	517985,571	9468959,596	0,00205	0,00078
19	518027,574	9468949,111	0,00236	0,00069
20	518034,055	9468905,303	0,00242	0,00196
21	518015,297	9468891,581	0,00210	0,00102
22	518066,332	9468867,445	0,00213	0,00274
23	518082,950	9468857,200	0,00349	0,01282
24	518100,957	9468824,802	0,00444	0,00372
25	518106,087	9468723,733	0,00341	0,00488
26	518022,155	9468931,556	0,00342	0,00071

Lampiran 5. Uji T Dua Sampel Berpasangan

Uji T Dua Sampel Berpasangan K-GNDVI

Paired Samples Statistics

	Mean	N	Std. Deviation	Std. Error Mean
Pair 1 K	2.388433	6	.3047512	.1244142
KGNDVI	2.526933	6	.0469166	.0191536

Paired Samples Correlations

	N	Correlation	Sig.
Pair 1 K & KGNDVI	6	-.642	.169

Paired Samples Test

	Paired Differences					t	df	Sig. (2-tailed)
	Mean	Std. Deviation	Std. Error Mean	95% Confidence Interval of the Difference				
				Lower	Upper			
Pair 1 K - KGNDVI	-.1385000	.3368155	.1375043	-.4919662	.2149662	-1.007	5	.360

Uji T Dua Sampel Berpasangan K-NIR BLUE

Paired Samples Statistics

	Mean	N	Std. Deviation	Std. Error Mean
Pair 1 K	2.388433	6	.3047512	.1244142
KNIRB	2.501814	6	.0293665	.0119888

Paired Samples Correlations

	N	Correlation	Sig.
Pair 1 K & KNIRB	6	-.144	.786

Paired Samples Test

	Paired Differences					t	df	Sig. (2-tailed)
	Mean	Std. Deviation	Std. Error Mean	95% Confidence Interval of the Difference				
				Lower	Upper			
Pair K - 1 KNIRB	-.1133803	.3103402	.1266958	-.4390624	.2123017	-.895	5	.412

Uji T Dua Sampel Berpasangan MG- NDVI

Paired Samples Statistics

	Mean	N	Std. Deviation	Std. Error Mean
Pair 1 Mg	.199167	6	.0390078	.0159249
MgNDVI	.215867	6	.0114099	.0046581

Paired Samples Correlations

	N	Correlation	Sig.
Pair 1 Mg & MgNDVI	6	.144	.786

Paired Samples Test

	Paired Differences					t	df	Sig. (2-tailed)
	Mean	Std. Deviation	Std. Error Mean	95% Confidence Interval of the Difference				
				Lower	Upper			
Pair Mg - 1 MgNDVI	-.0167	.0390359	.0159363	-.057666	.0242656	-1.048	5	.343