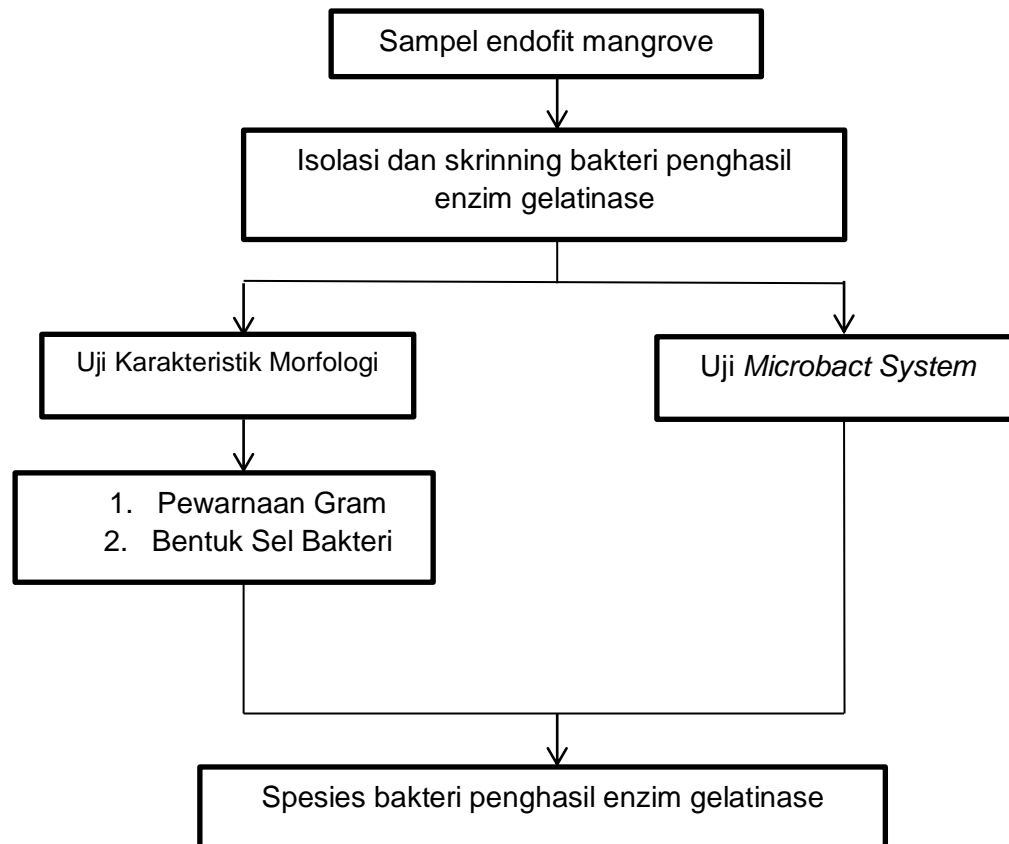
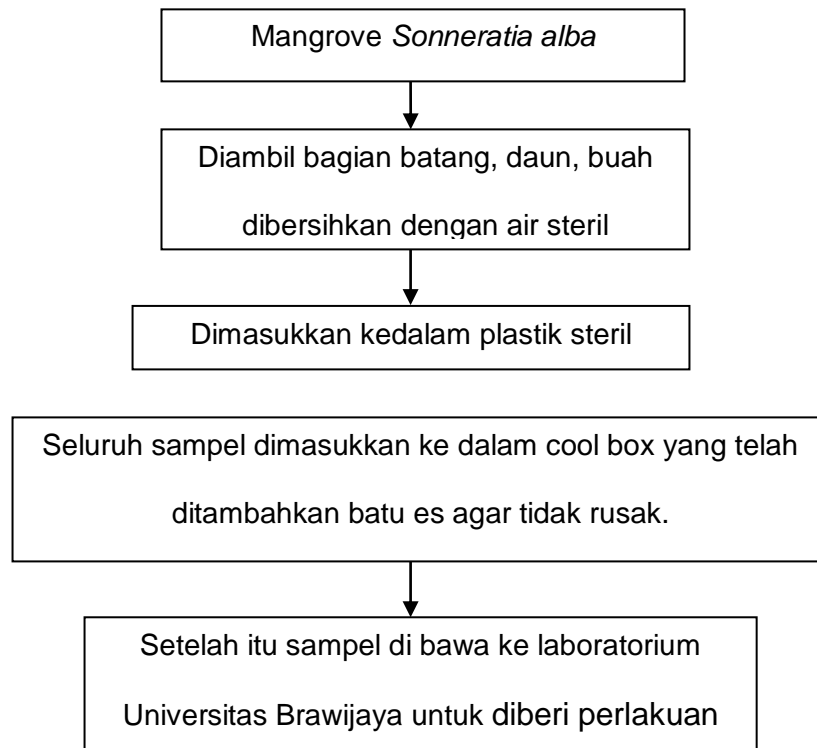
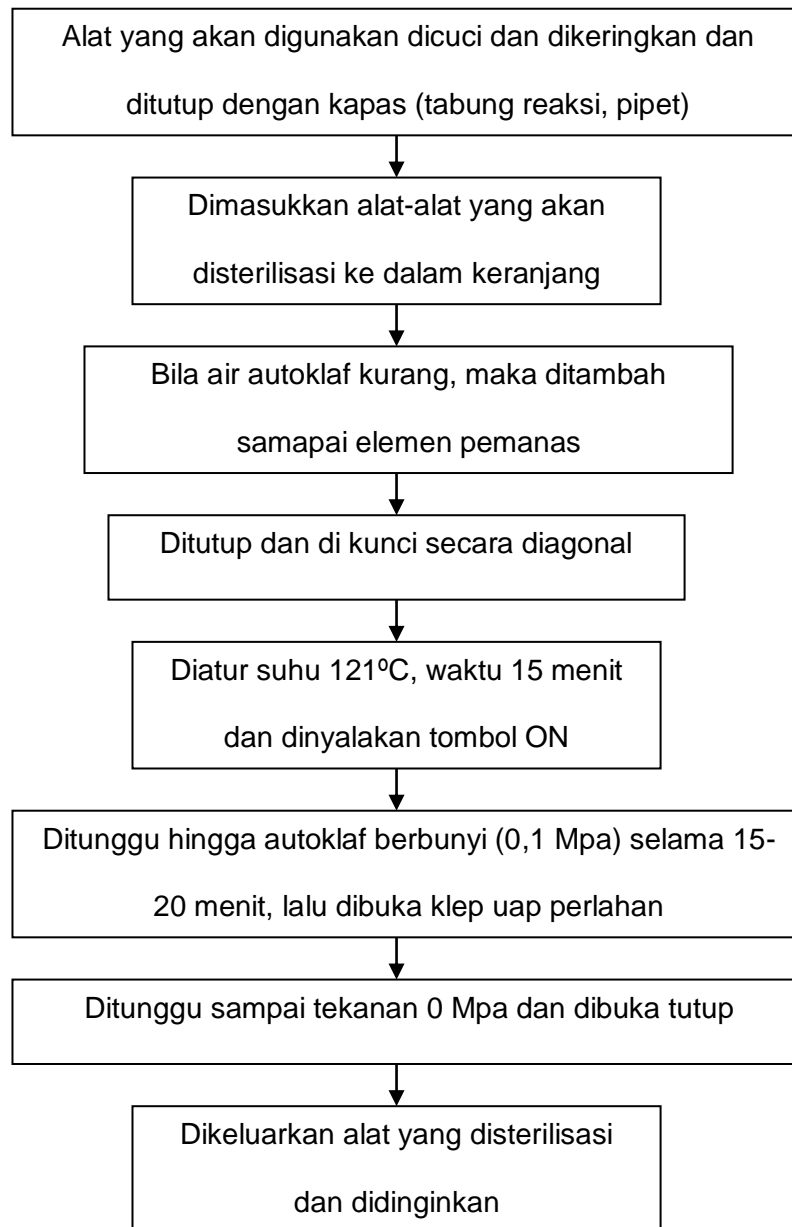


LAMPIRAN

Lampiran 1. Prosedur Penelitian

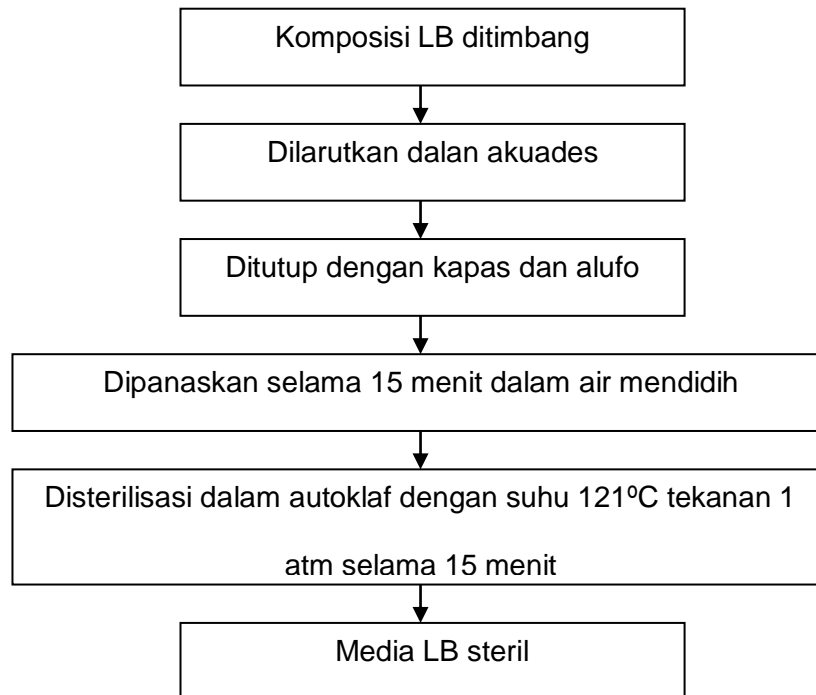


Lampiran 2. Pengambilan Sampel

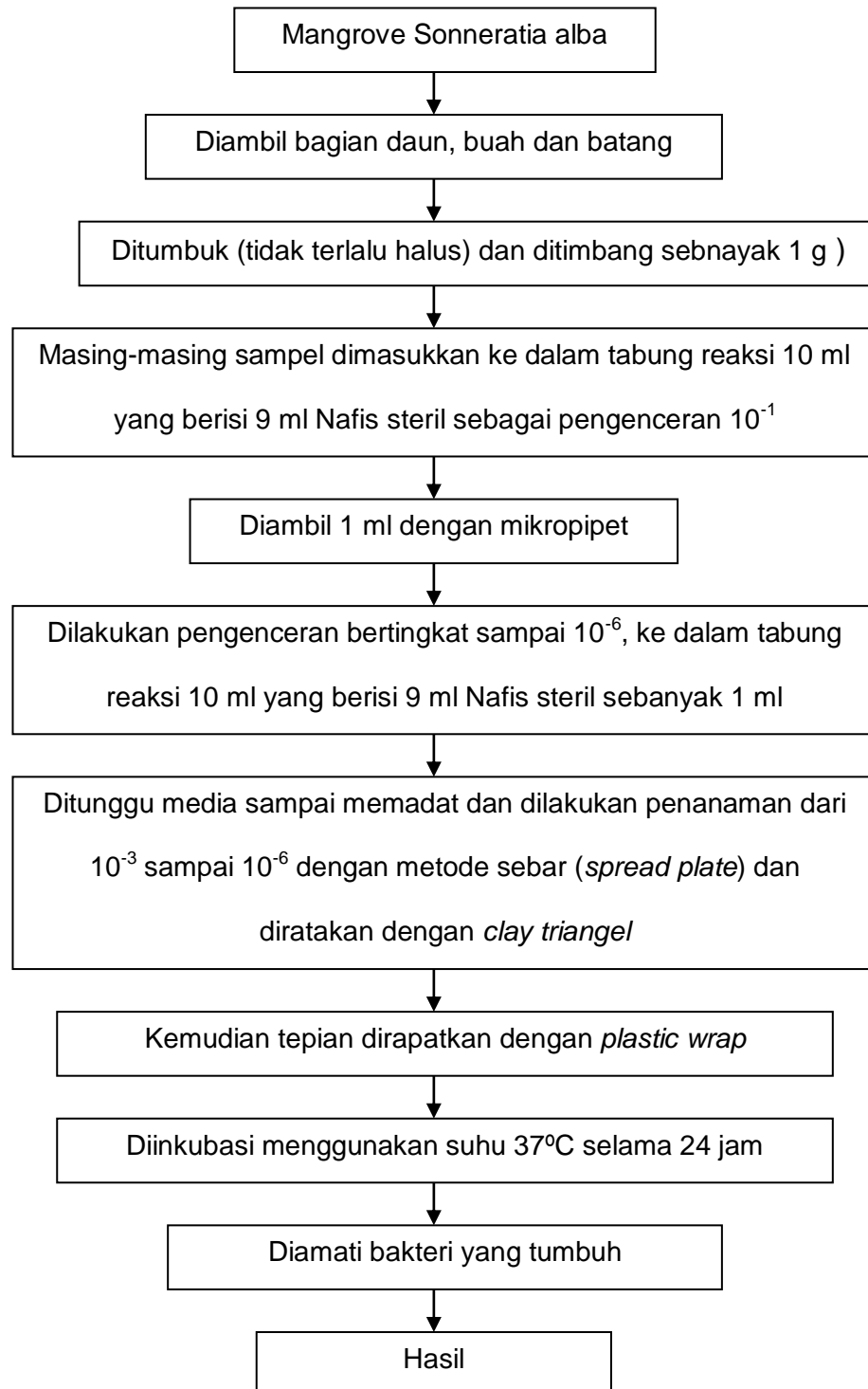
Lampiran 3. Sterilisasi Alat

Lampiran 4. Isolasi Bakteri

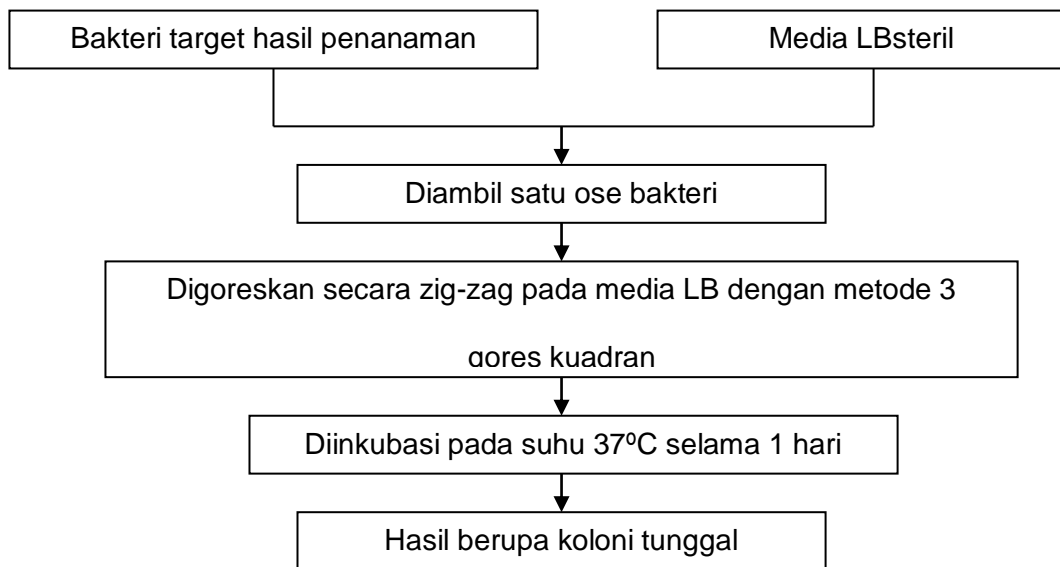
4.1 Pembuatan Media LB



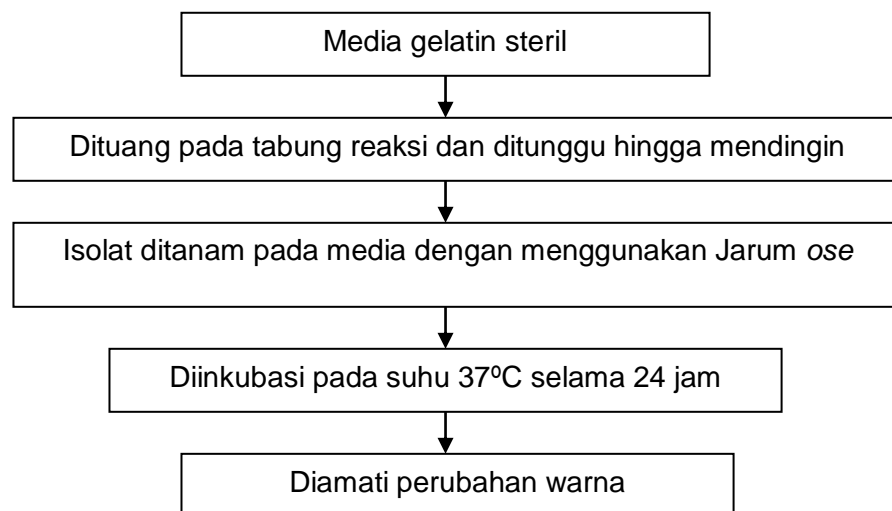
4.2 Penanaman pada media LBA



4.3 Pemurnian Isolat



4.4 Skringing Bakteri Penghasil Gelatinase

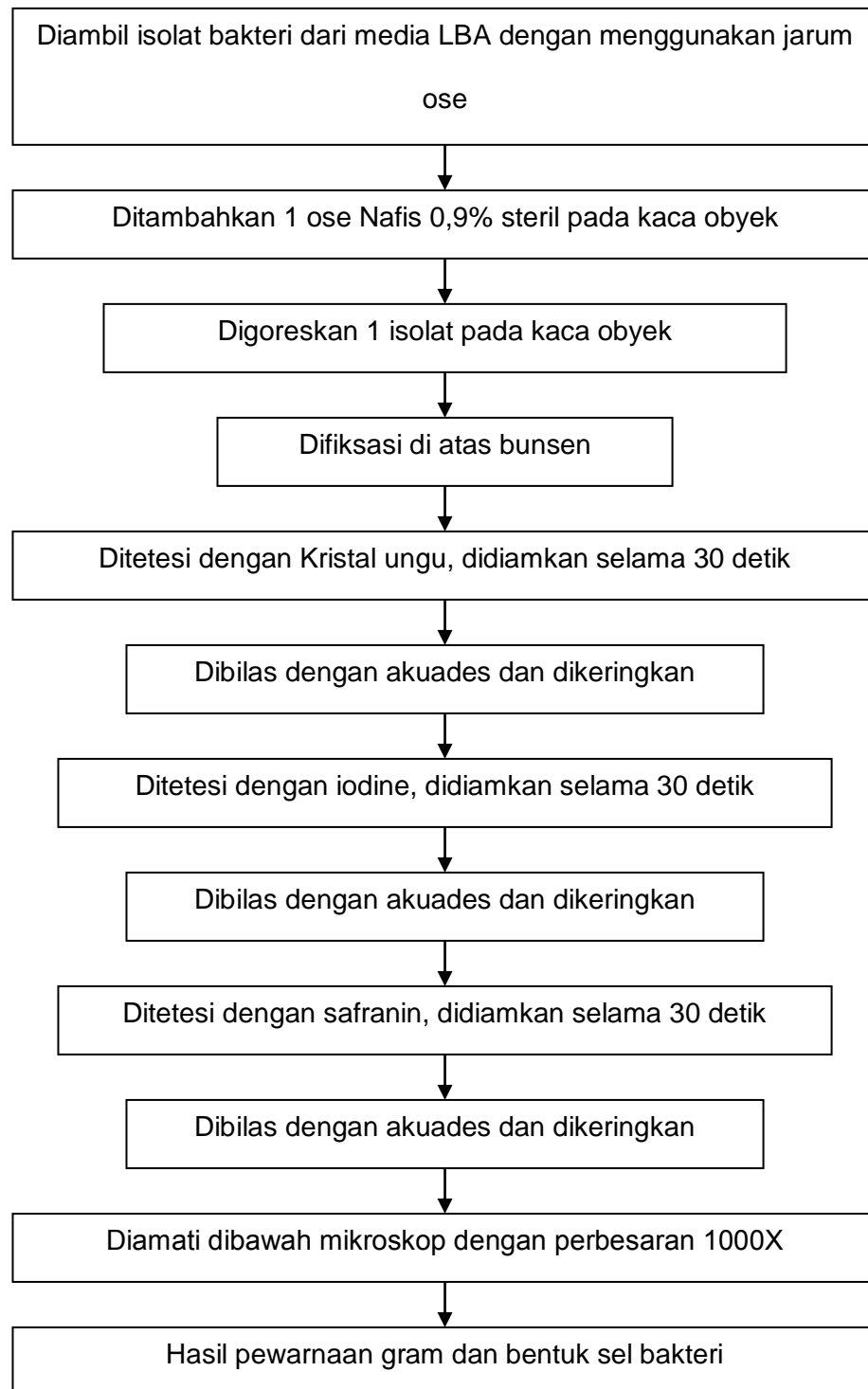


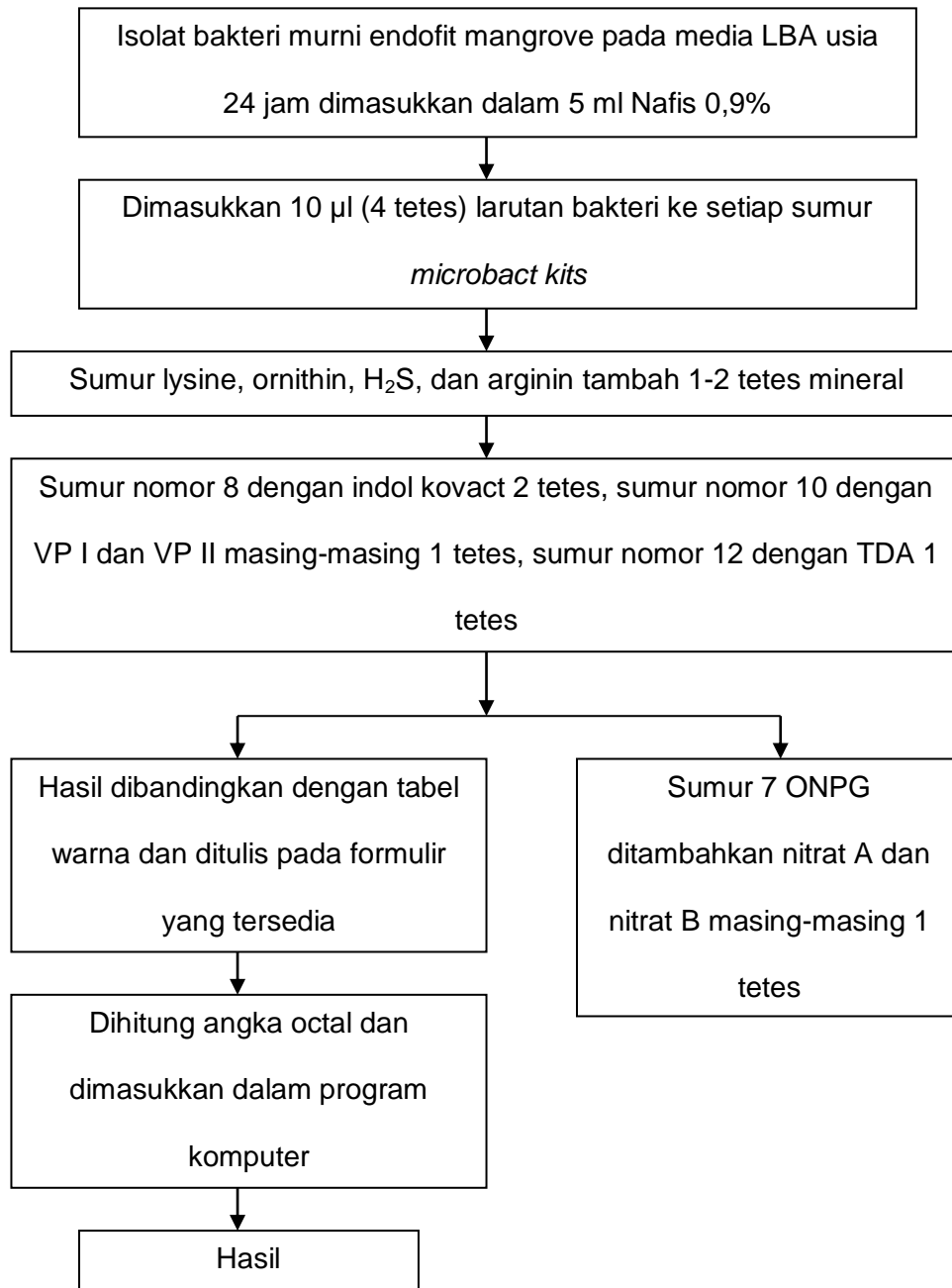
Keterangan :

(+) :Terjadi perubahan warna dari kuning menjadi biru

Lampiran 5. Uji Identifikasi Bakteri

5.1 Pewarnaan Gram



5.2 Uji *Microbact Identification Kits*

Lampiran 6. Hasil Isolasi Bakteri

6.1 hasil penanaman bakteri



(a)

(b)



(c)

(d)

Keterangan : (a) Goresan Kuadran kode DSA 1

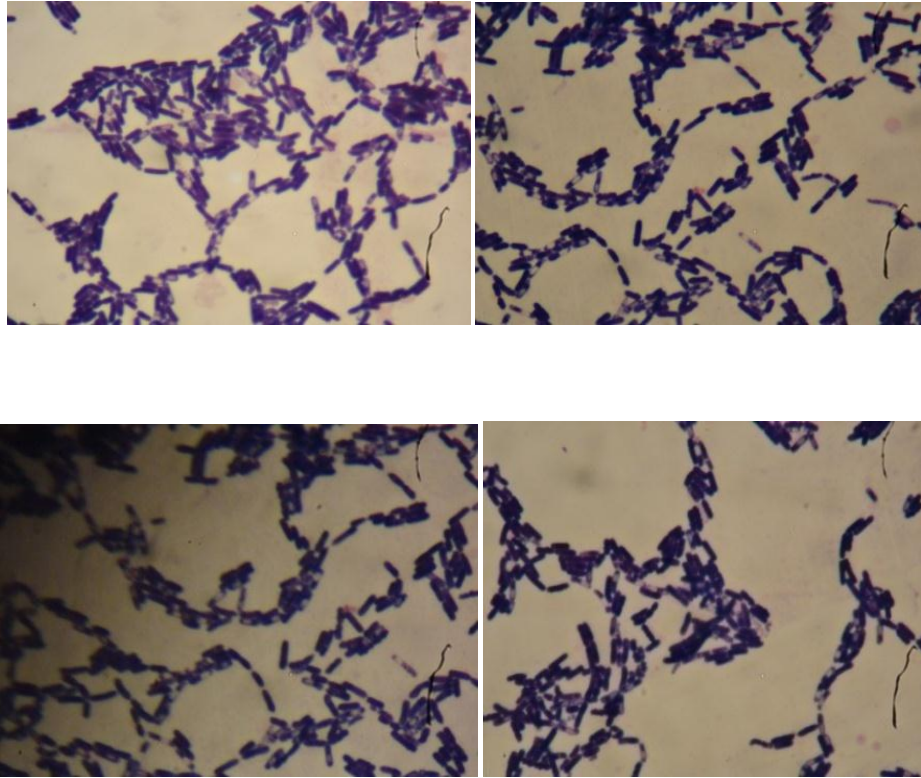
(b) Goresan Kuadran kode DSA 2

(c) Goresan Kuadran kode DSA 3

(d) Goresan Kuadran kode DSA 4

Lampiran 7. Hasil Uji Identifikasi Bakteri

7.1 Hasil Pewarnaan Gram Dengan Perbesaran 1000X



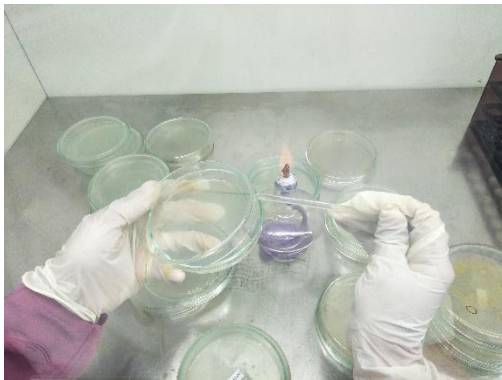
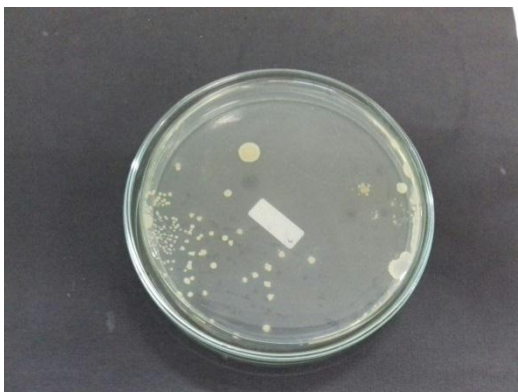
Gambar 6. Hasil Pewarnaan Gram Isolat DSA5

Lampiran 8. Dokumentasi Penelitian Isolasi Bakteri dari Endofit Mangrove

Sampel Endofit mangrove



Penanaman Bakteri Metode Sebar

Penanaman secara *Streak* 3 kuadran

Hasil Penanaman Metode Sebar

Hasil Penanaman *streak* 3 kuadran