

**PORTRAYTHE ID, EGO, SUPEREGO AND CONSCIOUS-
UNCONSCIOUS MIND BY SIGMUND FREUD ON
CHARACTER OF THEODORE IN *HER* FILM**

**THESIS
BY**

**DONY PRATAMA MEGA NANDA PUTRA
NIM 105110101111086**



**STUDY PROGRAM OF ENGLISH
DEPARTMENT OF LANGUAGES AND LITERATURES
FACULTY OF CULTURAL STUDIES
UNIVERSITAS BRAWIJAYA**

2015

**PORTRAY THE ID, EGO, SUPEREGO AND CONSCIOUS-
UNCONSCIOUS MIND BY SIGMUND FREUD ON CHARACTER OF
THEODORE IN *HER* FILM**

UNDERGRADUATE THESIS

Presented to
Universitas Brawijaya
in partial fulfillment of the requirements
for the degree of Sarjana Sastra

BY
Dony Pratama Mega Nanda Putra
NIM 105110101111086

**STUDY PROGRAM OF ENGLISH
DEPARTMENT OF LANGUAGES AND LITERATURES
FACULTY OF CULTURAL STUDIES
UNIVERSITAS BRAWIJAYA
2015**

DECLARATION OF AUTHORSHIP

Herewith I,
Name : Dony Pratama Mega Nanda Putra
NIM : 105110101111086
Address : Perumnas II Block C Number 3 TalangagungKepanjen, Malang

declare that:

1. this undergraduate thesis is the sole work of mine and has not been written in collaboration with any other person, nor does it include, without due acknowledgement, the work of any other person.
2. if at a later time it is found that this undergraduate thesis is a product of plagiarism, I am willing to accept any legal consequences that may be imposed upon me.



Malang,

(Dony Pratama Mega Nanda Putra)
NIM 105110101111086

This is to certify that the undergraduate thesis of **DonyPratama Mega Nanda Putra** has been approved by the supervisor

Malang,
Supervisor

(HennyIndarwati, M.A)
NIK.2013 12 770503 2001

Malang,
Co Supervisor

(NurulLailiNadhifah, M.Hum).
NIK. 2012 01 860628 2002



This is to certify that the undergraduate thesis of **Dony Pratama Mega Nanda Putra** has been approved by the Board of Examiners as one of the requirements for the degree of *Sarjana Sastra*

Melania Shinta Harendika, M.A., Chair
NIP.19840617 201012 2 005

Henny Indarwaty, M.A., Member
NIK.2013 12 770503 2001

Nurullaili Nadhifah, M.Hum. Member
NIK.2012 01 860628 2002

Acknowledged by,
Head Study Program of English

Sighted by,
Head of Department of
Languages and Literatures

Yusri Fajar, M.A.
NIP. 19770517 200312 1 001

Ismatul Khasanah, M.Ed., Ph.D.
NIP. 19750518 200501 2 001

ACKNOWLEDGEMENT

First of all, I would like to thank Allah S.W.T who has given mercies, blessing and guidance to finish this thesis. Secondly, I would like to say the deepest gratitude to my supervisor, Henny Indarwaty M.A and the co-supervisor Nurul Laili Nadhifah, M.Hum for their support, motivation, suggestion, and the knowledge during the process of writing this thesis. I also would like to say thank you to my examiner Melania Shinta Harendika, M.A in giving suggestion, correction, and direction in completion of this thesis.

Thirdly, I would like to thank my parents, Gimana and Sriati for the support and prayer until I finish my study, my young brother Prima Setyo Adi and my young sister Amaita Ardina Putri for their support and praise.

Last but never be least, I would like to say thank you for my friends, Abdi Mufizaki, April, Ayu Imaningtyas, Alfrista, Bagus Cahyo, Dwi Aji, Dwiantosa Ahmad, Ega Satriya, Ega Salvega, I Gede Arya Surabhawa, Pinta, Rahmad Seto Aji, Sarah Widita, Sri Mahardika, Wildan Arif, Nol Derajat Cinematograhya UB for sharing moments and their support.

Malang,

The Writer

ABSTRACT

Pratama, Dony. 2015. Portray The Id, Ego, Superego and Conscious-Unconscious Mind By Sigmund Freud On Character of Theodore in *Her* Film. Study Program of English, Department of Languages and Literature, Faculty of Cultural Studies, Universitas Brawijaya. Supervisor: Henny Indarwati; Co-supervisor: Nurul Laili Nadhifah

Keywords: psychoanalysis, id, ego, superego, conscious-unconscious mind, *Her* Film

People have different personality and it influences their attitude. People who have good personality will have good relation with environment around them too. Having good personality is very important because people as social creature have to communicate with other people. Having a good personality make people knew what they had to do in certain situation. Sigmund Freud is one of psychoanalysis experts. Sigmund Freud classified human personality into three aspects: id, ego and superego. The researcher also analyzed human mind by Sigmund Freud in this research. Human mind was divided into conscious, subconscious and unconscious. But in this research, the researcher analyzed conscious-unconscious mind. All of those theory will be used to analyzed a character in *Her* film namely Theodore Twombly. *Her* film tells about Theodore's loves story. A factor that can make the researcher analyze this film is Theodore's decisions to love Samantha although Samantha just an Operating System (OS). The unique relationship between Theodore and Samantha make the researcher wants to analyze by using Psychoanalysis theory. This is the problem to solved this research : How Theodore can love Samantha reviewed by id, ego, superego and conscious-unconscious mind.

This research uses qualitative approach because the researcher conducted the study by analyzing and interpreting the content of the texts

This research reveals that psychoanalysis theory is suitable to analyze *Her* film. Many of Theodore attitude can be reviewed by uses human personality and human mind. The researcher found some aspects that can influence Theodore to love Samantha. The first aspect is Theodore's id more dominant than ego and superego. When Theodore decides to love Samantha his superego opposes it, but he still follows his id because id works stronger than superego. The second is Theodore had failed in marriage with Catherine. That trauma makes Theodore afraid to have relationship with other girls. Theodore's memories with Catherine which kept in his unconscious also influences his decisions to love Samantha.

The researcher suggests to the next researcher who wants to make further research in the same field to analyze human mind by adding subconscious to make human mind analyze more detail. The researcher also can use Mimesis theory by Abrams.

ABSTRAK

Pratama, Dony. 2015. **Penggambaran Karakter Theodore Dalam Film *Her* Menggunakan id, ego, superego dan conscious-unconscious mind dari Sigmund Freud.** Program Studi Sastra Inggris, Jurusan Bahasa dan Sastra, Fakultas Ilmu Budaya, Universitas Brawijaya. Pembimbing (1): Henny Indarwati; Pembimbing (2): Nurul Laili Nadhifah

Kata Kunci: *psychoanalysis, id, ego, superego, conscious-unconscious mind, Her Film*

Setiap orang mempunyai kepribadian yang berbeda-beda yang mana kepribadian tersebut dapat mempengaruhi perilaku mereka. Orang yang mempunyai kepribadian yang baik akan mempunyai hubungan yang baik pula dengan lingkungan di sekitarnya. Mempunyai kepribadian yang baik sangatlah penting karena kita sebagai makhluk sosial perlu berkomunikasi dengan orang lain. Dengan mempunyai kepribadian yang baik, orang-orang akan tahu bagaimana harus bersikap. Sigmund Freud adalah salah satu ahli dalam ilmu kepribadian, dalam hal ini dia mengklasifikasikan kepribadian dipengaruhi oleh tiga aspek: *id, ego dan superego*. Selain membahas tentang kepribadian, penulis juga akan membahas tentang pemikiran manusia. Pemikiran manusia adalah salah satu dari *psychoanalysis* dari Sigmund Freud. Dalam pemikiran manusia terbagi atas *conscious, subconscious* dan *unconscious*. Tapi dalam penelitian ini penulis hanya akan membahas tentang *conscious* dan *unconscious*. Semua teori tersebut akan digunakan penulis dalam menganalisa karakter Theodore dari film *Her*. Film *Her* adalah film yang menceritakan tentang kehidupan cinta Theodore, hal yang membuat peneliti ingin meneliti film ini adalah keputusan Theodore untuk mencintai Samantha, yang mana Samantha adalah sebuah *Operating System (OS)*. Keunikan tersebut membuat peneliti ingin menganalisisnya menggunakan teori *Psychoanalysis* dari Sigmund Freud. Peneliti akan menjawab rumusan masalah dalam penelitian ini yaitu: Bagaimana Theodore dapat mencintai Samantha ditinjau dari *id, ego, superego and conscious-unconscious mind*.

Dalam Penelitian ini peneliti menggunakan pendekatan kualitatif karena peneliti memutuskan sendiri objek apa yang akan diteliti setelah itu menganalisa dan menginterpretasi konten dari teks.

Kesimpulan dari penelitian ini adalah teori *psychoanalysis* dari Sigmund Freud dinilai tepat untuk menganalisa film *Her* ini. Banyak dari perilaku Theodore yang dapat di kaji menggunakan teori *human personality* dan *human mind*. Setelah melihat film *Her* dan menganalisisnya menggunakan *id, ego, superego dan conscious-unconscious mind* peneliti menemukan beberapa faktor yang dapat dikaitkan dengan penyebab Theodore mencintai Samantha. Faktor pertama adalah terlalu dominannya Theodore *id* terhadap *ego* dan *superego*. Saat Theodore memutuskan untuk mencintai Samantha timbul pertentangan dari superego namun karena *id* terlalu dominan Theodore memilih untuk mengikuty *id* nya. Kedua adalah kegagalan Theodore dalam rumah tangganya bersama Catherine. Trauma inilah yang selalu membayangi Theodore saat akan memulai hubungan baru

dengan wanita lain. Kenangan bersama Catherine yang tetap tersimpan di Theodore *unconscious* juga mempengaruhi keputusan Theodore untuk mencintai Samantha.

Untuk penulis selanjutnya yang ingin menggunakan teori yang sama dapat menambahkan *subconscious* pada pembahasan *human mind*, agar pembahasan mengenai *human mind* lebih detail. Penulis dapat pula menggunakan teori Mimesis dari Abrams.



TABLE OF CONTENTS

TITLE PAGE	i
DECLARATION OF AUTHORSHIP	ii
SUPERVISORS' APPROVAL	iii
BOARD OF EXAMINERS' CERTIFICATE OF APPROVAL	iv
ACKNOWLEDGEMENTS	v
ABSTRACT	vi
ABSTRAK	vii
TABLE OF CONTENTS	viii
LIST OF FIGURE	x
CHAPTER I INTRODUCTION	
1.1. Background of the Study	1
1.2. Problems of the Study	4
1.3. Objectives of the Study	4
1.4. Significance of the Study.....	4
CHAPTER II REVIEW OF RELATED LITERATURE AND RESEARCH METHOD	
2.1 Theoretical Framework.....	6
2.1.1 Psychology of Literature.....	6
2.1.2 Psychoanalysis	7
2.1.2.1 The Id.....	8
2.1.2.2 The Ego	10
2.1.2.3 The Superego.....	11
2.1.2.4 Conscious Mind.....	12
2.1.2.5 Unconscious Mind.....	13
2.2 Previous Studies.....	14
2.3 Research Method	16
2.3.1 Deciding the Object of the Study	16
2.3.2 Analyzing and Interpreting the Data	17
CHAPTER III FINDING AND DISCUSSION	
3.1 Theodore's Id, Ego, Superego in Office	18
3.2 Theodore's Id, Ego, Superego in Public Area	23
3.3 Theodore's Id, Ego, Superego in Home	30
3.4 Theodore's Conscious-Unconscious Mind in Office.....	36
3.5 Theodore's Conscious-Unconscious Mind in Public Area.....	40
3.6 Theodore's Conscious-Unconscious Mind in Home	43
CHAPTER IV CONCLUSION AND SUGGESTION	
4.1 Conclusion	48
4.2 Suggestion	49

REFERENCES
APPENDICES

51
53



LIST OF FIGURE

Figure 3.1 Theodore listens to another melancholy song, after he does not really like the first song.....	19
Figure 3.1.2 Theodore watches the sexy photo from his gadget	19
Figure 3.1.3 Theodore looks around, because he wants to make sure, he is secure to see the sexy photo	20
Figure 3.1.4 Theodore is kissing with his girl, he cannot control himself and it makes Theodore gets a complaint from that girl	22
Figure 3.1.5 The girl looks disappointed.....	23
Figure 3.1.6 Theodore looks anxiety in the office	25
Figure 3.1.7 Theodore looks his gadget and he also can sees Samantha inside it	25
Figure 3.1.8 Theodore still confuses with his relationship with Samantha and it makes Theodore cannot sleep.....	26
Figure 3.1.9 Isabella starts to seduce Theodore.....	28
Figure 3.1.10 Theodore is carried out by Isabella plays	28
Figure 3.1.11 Theodore tries to avoid Isabella	29
Figure 3.1.12 Samantha cannot be found in Theodore's gadget	31
Figure 3.1.13 Theodore falls when he searches Samantha.....	31
Figure3.1.14 Theodore rises from his fall, without care anyone help	32
Figure 3.1.15 Theodore meets Amy to share his pain	34
Figure 3.1.16 Theodore gives a hug to his friend, Amy.....	35
Figure 3.1.17 Catherine reaction after hear Theodore words.....	36
Figure 3.2.1 Theodore spends his time with Catherine	38
Figure 3.2.2 Catherine looks after Theodore went she wakes up.....	39
Figure 3.2.3 The happy moment between Theodore and Catherine	39
Figure 3.2.3 Theodore search a friend with online	40
Figure 3.2.4 Theodore remembering the moment together with Catherine	42
Figure 3.2.5 Theodore tries to entertain Catherine when she is sad	46
Figure 3.2.6 Theodore writes a letter for Roberto	47
Figure 3.2.7 Theodore annoys Catherine in the office	48
Figure 3.2.8 Catherine tells to Theodore how much she love him	48
Figure 3.2.9 Theodore plays a cone with Catherine	49

CHAPTER 1

INTRODUCTION

This chapter describes the background, the problem and the objective of the study. To give the detail in the introduction, this chapter also includes the explanation of the significance of the study.

1.1 Background of The Study

There have been various attempts to define literature. Literature includes much of factual and fiction writing. Literary can transform common words better and make those words precious. The literary work like a vehicle for ideas, a reflection of social reality. Eagleton (2003, p.02) "Literature is a kind of writing which in the words of the Russian critic Roman Jakobson, represents an organized violence committed on ordinary speech, literature transforms and intensifies ordinary language, deviates systematically from everyday speech." Literature uses to improve the word itself in purpose to make the word better by combining it words become a sentence which can deliver the meaning.

The most common definitions of literature by John M. Ellis (n.d, as cited in Eagleton 2003, p.08)

'Literature' operates rather like the word 'weed': weeds are not particular kinds of plant, but just any kind of plant which for some reason or another a gardener does not what around. Perhaps literature means some- thing like the opposite: any kind of writing which for some reason or another somebody values highly.

Media is the newest type of literature. Drucker (2012, para.13) stated “The newest type of literature that has been defined as a distinct genre is media. This categorization was created to encompass the many new and important kinds of texts in our society today, such as movies and films, websites, commercials, billboards, and radio programs.”

Film is a moving photos or images. Film is not only using moving images, but also using a sound too. Film is a piece of the arts. Film has many terms like movie, cinema, etc. Film is a fusion of space and time, image and word, reality and fiction, and knowledge and feelings. Film is also like “empire of senses” because the spectators can see and hear on it. According to Martinez (2005, p. 58):

Literature and cinema are narrative arts, and consequently, a pretext to tell stories from the first oral transmissions or *the watered watering* (1896). It is obvious that the literary language and the cinematographic language are two different and specific systems of communication, although they share structures and have convergence zones. The first one uses words and the second one images, but the goal is the same: the told story, which comes out of the language to turn into a source of emotions and of feelings.

Film often shows many issues of social condition. In film, the audiences will find actor. Actor is someone who plays characters in film, TV, radio, theater, etc. Character is a character or habits that exist in every human being. To become a good actor, the actor must have good sense to play the characters he/she get. He/she has to present the character optimally, good or bad characters. From the explanation above, the researcher concludes that film is a part of literature. To analyze literature the researcher can use many theories, such as psychology,

sociology, semiotic, etc. Then, on this research the researcher will use psychology theory by Sigmund Freud.

Psychoanalysis is not merely a theory of the human mind, but also human personality, development and behavior. By learning psychoanalysis the reader can know how to treat other people better. This study has a purpose to measure and explore the process of psychoanalytic treatment, and give the best treat used. The specific elements of psychoanalysis is concepts, such as personality, conscious-unconscious process, defense mechanisms, anxiety, attachment, and transference.

Those elements are related to each other to make a good psychoanalytic. In this research, the researcher will focus in personality and conscious-unconscious mind. Personality is composed of three elements, id, ego, super ego. All of them are connected like a team. They work together to make complex behavior. Conscious-unconscious mind is a thing that all humankind have.

Those aspects control human thinking and movement. Most, or even all of human behaviors and experiences are determined by unconscious. Humankind surely has the experience, they feel happy, sad, angry, disappointed and so on. Definitely happiness is the greatest moment ever. Human being often feels love, proud, warm, comfort at happy moment. Love, everyone has to love someone or something. Love is the condition of emotion that are strong attraction and personal. Love itself can be concluded into human personality especially in the context of id.

Anapoi (2011, para.03) stated:

“Love is inherently free. It cannot be bought, sold, or traded. You cannot make someone love you, nor can you prevent it, for any

amount of money. Love cannot be imprisoned nor can it be legislated. Love is not a substance, not a commodity, nor even a marketable power source. Love has no territory, no borders, no quantifiable mass or energy output.”

Love has not limitation, it can develop and dominate than other human personalities such as ego, and superego. Ego, super ego and conscious-unconscious mind also can be used to analyze human personality especially talk about love. This issue can be found in the main character in *Her* film. *Her* is a film by Spike Jonze. *Her* tells about a love story between Theodor and Samantha. The main character in this movie is Theodor, who works as a writer. He gets a hard situation in his life since he got divorced. He wants to find a new person who wants to be his couple. Finally he meets with Samantha, and fall in love with her, but exactly Samantha is just a software.

Her film is chosen because the main character Theodor in this film shows his choice to fall in love with Samantha. Theodor's choice has many aspect related with id, ego, superego and conscious-unconscious mind.

1.2 Problem of the Study

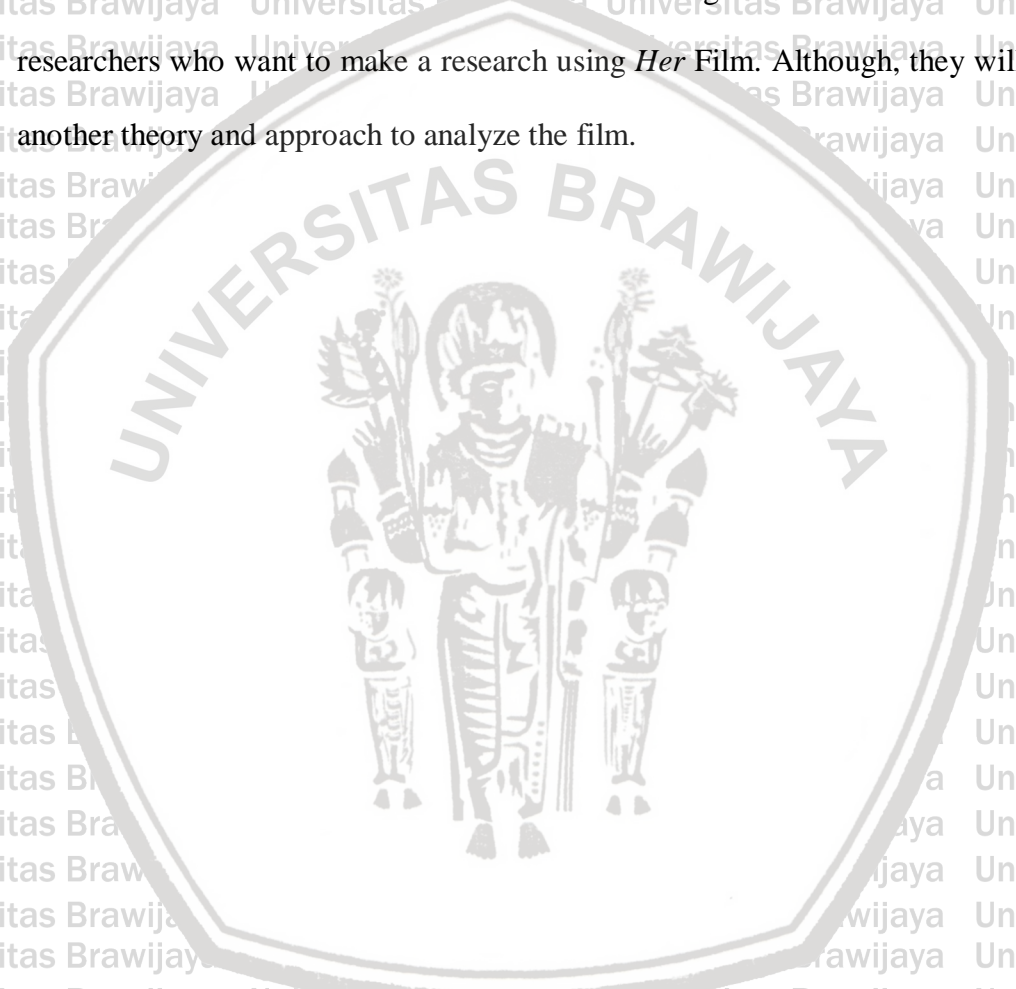
Based on the background of the study above, the problem of this study is how Theodore can love Samantha reviewed by id, ego, superego and conscious-unconscious mind

1.3 Objective of the Study

This study aims to find out how Theodore can love Samantha reviewed by id, ego, superego and conscious-unconscious mind

1.4 Significance of the Study

This research draws to give the information the character of Theodore in the point view of psychoanalysis by Sigmund Freud. The psychoanalysis theory will apply in this film, especially in concept of id, ego, super ego and conscious-unconscious mind. The researcher also wants to give the reference to other researchers who want to make a research using *Her* Film. Although, they will use another theory and approach to analyze the film.



CHAPTER II

REVIEW OF RELATED LITERATURE AND RESEARCH METHOD

This chapter discusses the theoretical framework of study. The first is psychology of literature. The second is Freudian psychoanalysis particularly of id, ego, superego and conscious-unconscious mind. The third is previous study. And the fourth is research method.

2.1 Theoretical Framework

2.1.1 Psychology of Literature

Literature represents a language, culture, tradition, historical and so on. The readers can get much new information of world with literature. Literature theory has many approach like mythological, sociological, psychological, historical, and other approach. Literature and psychology is connected to each other like Sigmund Freud based on Moghaddam (2009, p.505):

“The first category represents the lowest level of abstraction and involves ‘psychology in literature’: literature as a source of psychological data; literature as a source of insights for psychology. The second involves literature as an independent variable; literature as a dependent variable; literature as understood through psychology. The third, at the highest level of abstraction, involves psychology as nomothetic and literature as idiographic; psychology as culture-free and literature as culture-bound; psychology as concerned with actual worlds and literature with possible worlds; and, finally, ‘psychology is literature’”

2.1.2 Psychoanalysis

Psychoanalysis is a method to analyze human mind, personality, development and behavior especially unconscious mind. Psychoanalysis concerns to investigate the technique of mind. Psychoanalysis is applied in literature, sociology, anthropology, ethnology, religion, and mythology. Psychoanalysis and literature have good relation because psychoanalysis is the most commonly used in the analysis of literature, Based on Moghaddam (2009, p. 512) :

Without doubt the most prevalent type of relationship found between psychology and literature is the use of psychology as a means for interpreting literature. As is evident from the contents of Psychology and Literature, a journal published since 1951, it is psychodynamic psychology that is most commonly used in the analysis of literature. Freud's influence on writers has been extensive, but perhaps he has been even more influential among literary critics.

Sigmund Freud based on Sharpe and Faulkner (2008, p.04) "All psychoanalytic theory thought and process in people's minds which despite being unknown to them, have a decisive say in their behavior". Psychoanalysis has big influences to build people behavior, it works like a foundation of human life because it influences almost all of human attitude such as social relationship, personality and human mind. According to Pamela (2000,p.01) stated "psychoanalysis suggest new ways of understanding, amongst other thing, love, hate, childhood, family relation, civilization, religion, sexuality, fantasy, and the conflicting emotions that make up our daily life". Berger (2005,p.75) shows "psychoanalysis is a science which is related to conscious and unconscious processes, drives, and repressions with the laws of mental functioning". Unconscious process is the important thing will discuss, it is like a cube of feelings, thoughts, urges, and memories that

outside of our conscious awareness. Most of unconscious situation are unacceptable, feeling of pain, anxiety, or conflict. Rennison (2001,p.30) write, "The unconscious was the results of repression and what were repressed were all those thoughts, desires and feelings which the conscious self-found unacceptable".

Even so, this research will explain not merely unconscious but also issue of id, ego, superego and conscious-unconscious mind. The id, ego, superego and conscious-unconscious mind will use to portray character in *Her* film namely Theodore. The id works in as instincts or drives. Freud also calls them wishes. The ego relates the id and superego to reality of fact. It means consciousness searches for object to satisfy the wishes that id creates. The superego represents the moral and ideal. The moral and ideal communicate each other to the requirement the ego with feeling like pride, shame, and guilt. Some of the superego is conscious, but much of it remains unconscious. Superego also represents society. The unconscious contain all those drives, urges, or instincts that is beyond our awareness but that nevertheless motivate most of our word, feelings, and action. The conscious is mental element in our awareness at our daily activities.

2.1.2.1 The Id

The dominant aspect of human personality is id. According to Jess Feist and Gregory J, Feist (2006, p.27) "At the core of personality and completely unconscious is the psychological region called the id". The id as the dominant core of human personality will affect human behavior, because id works in unconscious mind makes people cannot control id to appear or not. The id exist as a part of our personality since we was born. Susan C. Cloninger (2004, p.41) "The id which

contains biological drives, is the only structure of personality present at birth". Biological drives presents Eros and Thanatos. Eros represents life instinct, for example when people feel hungry they will eat. Eros makes people develop and upgrade their potential in purpose to keep life. According to Freud (1925, as cited in Macleod Saul 2013, para.17) "Eros, or life instinct, helps the individual to survive; it directs life-sustaining activities such as respiration, eating and sex."

Thanatos aims to destruct and destroy. For example when people drunk, thanatos will push them become drunk addict, in other hand eros will tell to that people to stop drug to have a long life. According to Freud (1955, as cited in Li Qiuqia 2011, p.116) "Freud thinks the death instinct drives people to death so that they can have real peace, and only death can get rid of tense and struggles." Eros and Thanatos cannot exist without each other, which is both the life instinct and the death instinct correspond and clash with each other in a lifelong struggle. The id represents our deep desire, the id just know how to get something which is can satisfied the desire, no matter there is good or bad desire. According to Freud (1964, as cited in Jess Feist and Gregory J, Feist 2006, p.28) "The id is not immoral, merely amoral. All of the id's energy is spent for one purpose to seek pleasure without regard that is proper or not. Robert B. Ewen (2003, p.18) "The id is totally illogical and amoral, however, and has no conception of reality or self-preservation". According to Freud (1911/1963c, as cited in Robert B. Ewen 2003, p.19) "The id's irrational, impulsive, and image-producing mode of thought is known as the primary process". At the moment of the id has appear, the id tries to

fill all of tendency. When these tendency are not satisfied, the result is anxiety.

According to Kendra Cherry (2014, para.08)

“The Id is driven by the pleasure principle, which strives for immediate gratification of all desires, wants, and needs. If these needs are not satisfied immediately, the result is a state anxiety or tension”.

In other word, the id consist of basic or animal instinct of pleasure which is it need immediate satisfaction. Robert B. Ewen (2003, p.51) stated:

“The id is present at birth, is entirely unconscious, and includes all innate instincts. It operates in accordance with the irrational primary process, and is motivated entirely by the pleasure principle. It has no sense of logic, time, or self-preservation, and its only resource is to form wish-fulfilling mental images of desired objects”.

For example, when the people are fall in love, the id forces the people to get their love.

2.1.2.2 The Ego

Freud and Breuer (1895, cited in Jacobs 2003, p.180) stated “The Ego there seems to serve the principal function of warding off unacceptable ideas”.

Susan C. Cloninger (2004, p.43) said “The ego is the structure of personality that brings about the unity of personality and is in touch with the real world. It operates according to the reality principle”. The ego unlike the id, when id works in the pleasure principle, ego works in reality principle. Freud and Breuer (1993, p.109) writes

“It develops from perceiving the instincts to controlling them to adopt a popular mode of speaking we might say that the ego stands for reason and good sense, while the id stands for the untamed passions. The ego relation to the id might be compared with that of rider to his horse”.

The id and the ego like a coin which has two parts front and back. Like Freud's own slogan cited in Terry Eagleton (2003, p.139) "Where id was, there shall ego be". The ego works together with id to fill its desire, but the ego has to be able to organize id's desire and superego, aiming to keep for life. According to Freud (1964, cited in Jess Feist and Gregory J, Feist 2006, p.29)

"The ego becomes differentiated from the id when infants learn to distinguish themselves from the outer world. While the id remains unchanged, the ego continues to develop strategies for handling the id's unrealistic and unrelenting demands for pleasure. At times the ego can control the powerful, pleasure-seeking id, but at other times it loses control".

Continuing the example of the id above, while people fall in love, the ego and id have an effort to accomplish the id needs about love. The Ego makes some actions like give a gift, make a small chat, kissing, and other ways to satisfy the id needs of love.

2.1.2.3 The Superego

The main function of superego is to tell us, what people should do and what people should not do, in the background of moral and ideal principle. Jess Feist and Gregory J, Feist (2006, p.30) said "The superego, or above-I, represents the moral and ideal aspects of personality and is guided by the moralistic and idealistic principles as opposed to the pleasure principle of the id and the realistic principle of the ego."

The superego acts to control sexual and habitual. The superego watches and judges the ego actions and intension. The superego consists of norms, rules, traditions, cultures, and the habits of the family itself. Sandler (1997, p.27) stated

“The Superego was seen as developing as a sort of internal precipitate or residue of the child’s early conflict in relation to his parents, caretakers, or other figures of authority. It is the vehicle of the conscience, of parental and cultural values, and of the child’s own ideals”.

In the previous example when people fall in love, they will make some efforts to show and deliver it. When they start to chat the superego watches and judges there are appropriate chatting or not. Appropriate chat indicates that ego works harmonious with id and superego, it presents the people still in conscious stage. In the opposite when they show their love with kiss he/she directly by ignoring norm and social value, in that case prove that their works stronger than the superego.

2.1.2.4 Conscious Mind

Talking about conscious-unconscious, it talks about human thinking. Dijksterhuis and Nordgren (2006, p.95) stated “a theory that is applicable to all psychological phenomena associated with thought, such as choice, decision making, attitude formation and attitude change, impression formation, diagnosticity, problem solving, and creativity”. All of people do with full of awareness such as eating, chatting, playing, reading, writing, driving is include of conscious condition. Kendra Cherry (2014, para.08) stated “The conscious mind includes everything that we are aware of. This is the aspect of our mental processing that we can think and talk about rationally. A part of this include our memories, which is not always part of consciousness but can be retrieving easily at any time and bring into our awareness”. Rennison (2001, p.31) said “There was the part (the conscious) which was aware of its own thoughts and desires”. The

conscious mind has to able to work in the rational part of mind, it seems like the ego does. Rennison (2001, p.39) statement:

“The ego is the rational part of the mind, the part that reacts to the outside world and allows the individual to adapt to reality, to acknowledge the ‘reality principle’..In most respects the ego plays the role the conscious played in Freud’s initial bipartite model, although Freud made clear that some of the monitoring and censoring of the id that the ego carries out is done unconsciously”.

Her film has many conscious mind which is the actor does in the scene. And put this conscious mind to reveal the mind is organize in the *Her*film, make the readers easily to understand the purpose of the actor thinking.

2.1.2.5 Unconscious Mind

Conscious-unconscious mind are related each other, despite it has their own function. According to Freud (1925, cited in Thurschwell 2000, p.04):

“For Freud every thought is unconscious before it is conscious: ‘Psychoanalysis regarded everything mental as being in the first instance unconscious; the further quality of “consciousness” might also be present, or again it might be absent”.

Unconscious mind is the biggest part of human thinking. It works especially in our feeling which is all of those processes happened in unconscious mind.

Unconscious mind has big influence of our personality develops. According to Freud (n.d, as cited in Kendra Cherry, 2014, para 10) “the unconscious continues to influence our behavior and experience, even though we are unaware of these underlying influences”. According to Freud (1930 as cited in Thurschwell 2000, p.04):

“The unconscious for Freud, can be defined in several different ways, but it is primarily the storehouse of instinctual desires and needs. Childhood wishes and memories live on in unconscious life,

even if they have been erased from consciousness. The unconscious is, in a sense, the great waste-paper basket of the mind — the trash that never gets taken out: ‘in mental life nothing which has once been formed can perish — ... everything is somehow preserved and ... in suitable circumstances ... it can once more be brought to light’.

Sometimes when human sleep, human will get a dream. According to Freud, dream also includes into unconscious mind. Based on Freud (1973, cited in Easthope, 2003.p 09) “Freud says the interpretation of dreams is ‘the royal road’ to understanding the unconscious”. Not merely talk about dream as one aspect of unconscious, Freud also talks about fantasy as an element of unconscious mind.

Freud (cited by Easthope, 2003.p 110) “The common element between art and the unconscious is fantasy”. Dream and Fantasy almost same in the context of our mind and expectation, but they have very different impact on our lives. Benjewell (2013, para.03)"dreams inspire us to achieve great things". Fantasy according to Freud as cited in Easthope, 2003.p126) “Freud regards fantasy as the fulfilment of a wish ... For Freud, you and the fantasy are separate—wanting something you don’t have you then try to satisfy that wish in fantasy”.

In *Her* film, many approaches that can apply to dissect the film such as id, ego, superego and conscious-unconscious mind. By studying the various approaches, hopefully *Her* film spectator can understand content of this film.

2.2 Previous studies

In this chapter, the researcher wants to show two title of thesis which is related with this research. The first is "Defense Mechanisms Employed by Greg Heffley in *Diary of Wimpy Kid* Film conducted by Ilmia Hidayatullinsani. And the

second comes from WenySukmaPrimadhine entitle "The Manifestation of Id, Ego, and Superego in a Character Named Jamal Malik in the Film Slum Dog Millionaire. To finish this research, the researcher searches in the internet manually and reads some books theory about personality by Freud. The researcher finds some journals, articles and books which is relate with Freudian personality theory specifically id, ego, superego and conscious-unconscious mind.

The researcher choses selectively the source above and find the best theory and approach suitable to use. The next is check out the two previous study above more clearly in the purpose to know particularly the main of those study. The first study is belong to Brawijaya University student, and her thesis entitle "Defense Mechanisms Employed by Greg Heffley in Diary of Wimpy Kid Film conducted by IlmiaHidayatullInsani (2014). This research analyzing one of Freudian theory of personality, specifically defense mechanisms on the main character Greg Heffley in this film shows his defense to deal with his anxiety. This film shows how the main character is facing and solving his problem psychologically. The second research come from Brawijaya University student entitle "The Manifestation of Id, Ego, and Superego in a Character Named Jamal Malik in the Film Slum Dog Millionaire by WenySukmaPrimadhine (2011). In the second research, the researcher concern toid, ego, and superego portray in the main character Jamal Malik in the film slum dog millionaire, supported by cinematography concept.

The researcher choses two previous study above because all of those film is good in the case of reflecting the use of psychoanalysis particularly in personality

theory by Sigmund Freud. In this research the researcher wants the readers can clearly understand about psychoanalysis by Sigmund Freud, especially in personality approach.

Those thesis above have some similarities and differences. The similarities are the theory that they used is personality theory from Sigmund Freud. The other similarity is they use a film in their research. The differences from those thesis are in the *Diary of Wimpy Kid*, the researcher uses personality approach "Defense Mechanism", in the other hand *Slum Dog Millionaire* film uses id, Ego, Superego and support by cinematography concept. In *Her* film, the researcher uses id, ego, superego and conscious-unconscious mind

The researcher wants to make an analysis from Theodore as the main character in this film in the case of Theodore felling with Samantha as his girlfriend by using id, ego, superego and conscious-unconscious mind.

2.3 Research Method

To complete this chapter, the researcher needed to attach some steps to compile the data, there are three steps: deciding the object of the study, analyzing and interpreting the data.

2.3.1 Deciding the Object of the Study

Almost easy to find *Her* film, because *Her* film is a good film which is winner of Oscar and Golden Globe and many more at 2013. The researcher watched this film many times to make sure what theory can be applied in this film. And finally the researcher decided to use Psychoanalysis by Sigmund

Freud. The researcher used psychoanalysis theory because the researcher found the unique side from the main character Theodore especially used personality and human mind approaches from Sigmund Freud. In this film Theodore confuses to make decision about his love. Some aspects are influenced Theodore to make decision, such as the social life, environment and his past memories.

2.3.2 Analyzing and Interpreting the Data.

After watching *Her* film many times, the researcher also searched in the internet to know what is summarize of the film from other people perspectives.

Aiming to make some comparisons between the researcher opinion and other people opinion. After that the researcher also did some analyzes, such as taken a note and picture, download Bahasa and English subtitle, reading and understandable about psychoanalysis. After done with all of those steps, the last is make conclusion.

CHAPTER III

FINDING AND DISCUSSION

This chapter discusses about how to apply the theory of psychoanalysis by Sigmund Freud particularly discusses about the id, ego, superego and conscious-unconscious mind in *Her* movie. In this movie, the researcher will discuss the main character, Theodore. The researcher divides this chapter into two subchapter which is intended to facilitate the readers understand about id, ego, superego and conscious-unconscious mind clearly.

3.1 Id, Ego, Superego in Theodore Character

Human personality is divided into three elements, there are id, ego and superego. Those three elements work together to create human attitude. Each element has its own function, id presents the pleasure principle, ego presents the reality principle and superego presents the moralistic and idealistic principle.

The first analysis shows how Theodore wants to listen a melancholy song. He gives the order to his gadget to play the melancholy song, but at the first opportunity, he does not like the first melancholy song, and he wants to listen another melancholy song. Theodore's desire to listen to a melancholy song is included in id. According to Susan C. Cloninger (2004, p.41)

"The id which contains biological drives, is the only structure of personality present at birth. The Id represents our deep desire, the Id just know how to get something which is can satisfied the desire, no matter there is good or bad desire".

From that case the researcher can analysis Theodore's id is not satisfied by the first song and make him hears the other melancholy song. It is shown in figure below.

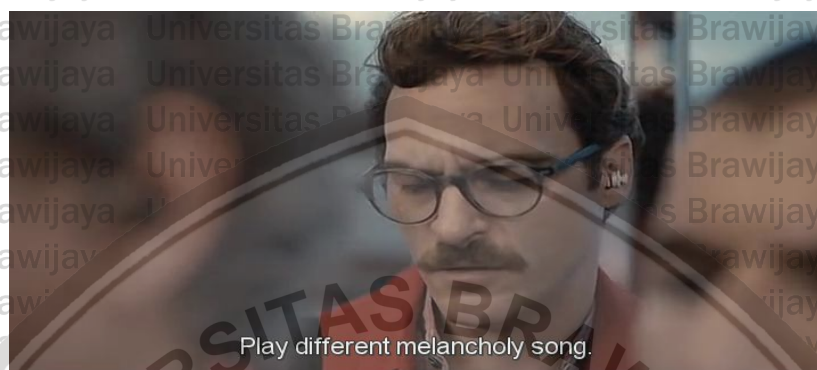


Figure 3.1 Theodore listens to another melancholy song, after he does not really like the first song.

(Source: Her movie, 2013, minute 00.04.50)

In the next scene can be seen when Theodore goes home by train, in the train he checks some inbox email from his gadget. Theodore finds an interesting news from his notification. The inbox makes his id appear suddenly. The id activities can be seen in figure 3.1.2 and 3.1.3 below.

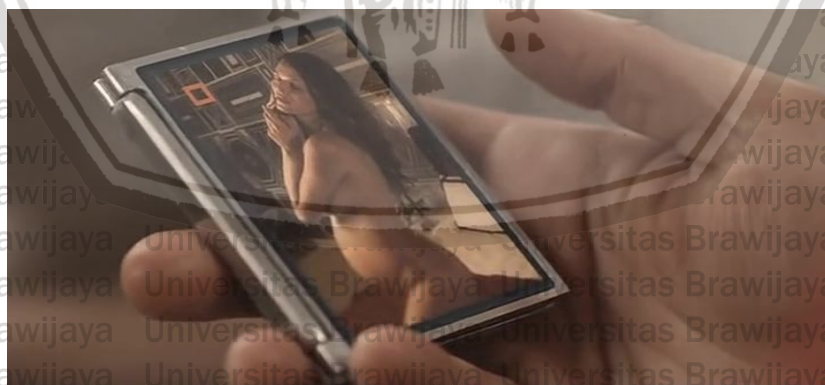


Figure 3.1.2 Theodore watches the sexy photo from his gadget.

(Source: Her movie, 2013, minute 00.05.50)

In that scene show how Theodore watches a sexy picture of Kimberly Ashford.

Kimberly Ashford is a famous and sexy actress in there. Theodore gets more excited when he knows that picture reveals provocative pregnancy photo. The id looks stronger than superego, which works in the moralistic and idealistic principle. According to Jess Feist and Gregory J. Feist (2006, p.30) “The superego, or above-I, represents the moral and ideal aspects of personality and is guided by the moralistic and idealistic principles as opposed to the pleasure principle of the id and the realistic principle of the ego.”



Figure 3.1.3 Theodore looks around, because he wants to make sure, he is secure to see the sexy photo.

(Source: Her movie, 2013, minute 00.05.44)

Theodore's id works stronger than superego and this situation makes him wants to make sure that he safe to see the picture although he knows what he has done is impolite in public area.

Theodore's other id also appears when he feels lonely. This scene tells about Theodore's activities after finishing his job in beautifulhandwrittenletters.com, a company where Theodore works as a writer.

Theodore begins his boring life since he gets divorce with his wife.

In the moment of his boring period, he recalls his beautiful moment when he is still together with Catherine (Theodore's wife). Theodore's id wants to have a friend to talk at this moment and makes the ego tries to fulfill id's need by searching a friend to have a chat mate. It can be seen from the dialogue below.

Theodore : Put a chat room standard search.
 Gadget : The following are a adult female who can't sleep and want to have some fun.
 Girl 1 : I really had a bad day at work and I can't sleep. Is there anybody out there that can talk?
 Theodore : Next.
 Girl 2 : Hi, I just want to tear me apart...
 Theodore : Next.
 Girl 3 : Hi, I'm here alone and I can't sleep. Who's out there to share this bed with me?
 Theodore : Send message
 (Source: *Her movie, 2013, minute 00.07.53*)

Theodore selects a chat mate by listening to the girls voices and interesting sentences they have. Finally Theodore finds the third girl and he sends a message to that girl. The researcher finds that the ego can fill the id need of friend to talk.

After Theodore finds the chat mate, he starts to talk with that girl. When they have a talk, Theodore's id is more dominant than ego and superego, it can be seen in the dialog below.

Theodore : Are you wearing any underwear?
 The girl : No, never. I like to sleep with my ass pushed up against you so I can rub myself into your crotch and... Wake you up with a hard on.
 Theodore : It worked. My fingers are touching you over your whole body.
 The girl : Fuck me, now! Please!
 Theodore : I'm taking you from behind...
 The girl : Yes, I can feel!
 (Source: *Her movie, 2013, minute 00.09.14*)

Theodore starts to seduce the girl, it can be seen from the dialog above, which shows how id which consists of desire shows the domination. The other id tendency can be seen in the scene of Theodore gets a date with a girl who he know from Lewman, his friend. Theodore invites that girl in the restaurant where that girl really wants to visit. It can be seen in the dialog below.

Theodore : Wow that's interesting.

The girl : This place is amazing. I wanted to come here for so long. And I love Asian fusion.

Theodore : Me too.

The girl : Really? It's the best . And the bartender is supposed to be incredible.

(Source: Her movie, 2013, minute 00.33.09)

Theodore gets a romantic and sensual dating which makes Theodore in the climax of id. When Theodore is in the high level of id, his ego cannot fill the id tendency, and it makes Theodore feel anxiety as a result of id cannot be satisfied.

According to Kendra Cherry (2014, para.08) “The Id is driven by the pleasure principle, which strives for immediate gratification of all desires, wants, and needs. If these needs are not satisfied immediately, the result is a state anxiety or tension”. It can be seen in figure 3.1.4 and 3.1.5 below.

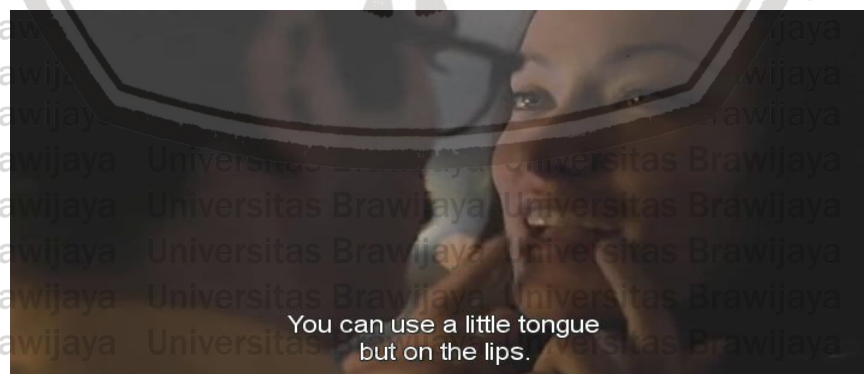


Figure 3.1.4 Theodore is kissing with his girl, he cannot control himself and it makes Theodore gets a complaint from that girl.

(Source: Her movie, 2013, minute 00.35.34)

Theodore has a date and gets drunk. When they are drunk, Theodore and that girl are kissing each other. It makes Theodore's id appear, because id is all of human desires. When the id appears, it needs to satisfy immediately, but the id wants more than kiss. The id wants to have a sex with that girl, the ego tries to fill id tendency but ego cannot do it because the girl wants to have a serious relationship.

In that case, Theodore's ego has a clash with the girl's ego, it is because Theodore's ego who presents the desire to have a sex is denied by the girl's ego who presents her desires to have a serious relationship rather than have a sex with Theodore.



Figure 3.1.5 The girl looks disappointed

(Source: Her movie, 2013, minute 00.36.52)

The ego's efforts to fill id's desires is stopped immediately when the girl rejects Theodore. Theodore tries to make that girl believe, but everything he does is useless. It can be seen in the conversation below.

The Girl : Wait... You are not just going to fuck me, and not call me like other guys?

Theodore : No, not at all!

The Girl : When am I gonna see you again?

Theodore : I have my goddaughter's birthday next weekend.

But...

The Girl : You know, at my age I feel I can not...Waste my time... if you can not be serious.

Theodore : I do not know... Maybe we should call it a night. I had fun with you. You are great.

The Girl : You are a really creepy dude.

Theodore : It's not true!

The Girl : Yes, it is!

(Source: *Her* movie, 2013, minute 00.35.52)

From the dialog above, Theodore cannot persuade the girl to get a sex even he gives some reasons to her and it makes Theodore feel anxiety. Theodore's anxiety can be seen in the dialog below as a result of id tendency can be satisfied.

Theodore : The room is spinning because I drank a lot. I wanted to get drunk. Having sex. There is something very sexy about that woman. Because I'm alone. Maybe it was because I only... I wanted someone to fuck me. Someone who wants to fuck her. Maybe this time would have felt... Fill that hole in my heart, but probably not.

(Source: *Her* movie, 2013, minute 00.39.30)

Theodore shares his date experience with the girl to Samantha. Theodore really feel anxiety because he cannot have a sex with that girl. The next analysis will explain about Theodore's superego. The superego comes from the dialog below when Theodore and Samantha are at the beach.

Samantha :What if... your anus were in your armpit?

Theodore : I'm trying to imagine what toilets would look like

Samantha : and what anal sex would look like!

Theodore : It's an interesting thought...

Samantha : Look at this drawing I just made.

Theodore : You're insane!

Samantha : Really?

(Source: *Her* movie, 2013, minute 00.48.10)

Samantha gives the crazy imagination about how human looks like.

Theodore is shock when he sees the image who Samantha draws. Theodore's superego resolves that image is not appropriate and insane. In the next analysis the

readers will be showed Theodore's anxiety after he meets Catherine. Theodore gets anxiety because of Catherine asks about his relationship with Samantha, he cannot tells Samantha about his problem with Catherine and it makes Samantha worries about that. Theodore's anxiety can be seen in this dialog and figure below.



Figure 3.1.6 Theodore looks anxiety in the office.

(Source: Her movie, 2013, minute 01.10.53)

Samantha : Hey, are you okay?
 Theodore : Yeah, I am.
 Samantha : How is it going with you?
 Theodore : I'm fine...
 Samantha : So now a good time to talk?
 Theodore : Yeah...

(Source: Her movie, 2013, minute 01.10.53)



Figure 3.1.7 Theodore looks his gadget and he also can sees Samantha inside it.

(Source: Her movie, 2013, minute 01.11.40)

Samantha : What's wrong?

Theodore : Nothing.
 Samantha : Just... made me think of you, you know what I mean?
 Theodore : Yeah, yeah of course. I think it's great.
 Samantha : You sound distracted, you want.. To talk later ...?
 Theodore : Sounds good.
 Samantha : Talk to you later.
 Theodore : Goodbye.
 (Source: *Her* movie, 2013, minute 01.11.55)

From the dialog and figure above, it can be concluded that Theodore's superego still gives him a good reason for Samantha without making her worries about his condition.



Figure 3.1.8 Theodore still confuses with his relationship with Samantha and it makes Theodore cannot sleep.

(Source: *Her* movie, 2013, minute 01.14.11)

Theodore really feels anxious, he wants to make a decision but he cannot manage his id and superego well. In this situation, Samantha gives an idea to have a sex with Theodore. They always have a phone sex, but tonight Samantha wants to give Theodore real sex. Samantha asks some help to Isabella, Isabella is Samantha's new friend, she is a human and wants to help Theodore and Samantha in their sex relation. Theodore does not agree with Samantha ideas, because he

cannot doing sex with women he does not know well. It can be seen in this dialog below:

Samantha : Well, I found something I thought it could be fun. It is a service that provides a surrogate sexual partner... For os-human relationship...

Theodore : What?

Samantha : Here, I found a girl that I really like and I've been e-mailing her. Her name is Isabella, and I think you'd like her too.

Theodore : Is she a prostitute or something?

Samantha : No, not at all. There's no money involved. She's doing it because she wants to be part of our relationship.

Theodore : Why? She does not even know us.

Samantha : But I told her all about us and she is very excited.

Theodore : I do not know, Samantha. The thing is... I do not think... is a good idea. Somebody's feelings will probably get hurt.

Samantha : It will be fun. We will have fun together.

Theodore : Sorry.

(Source: Her movie, 2013, minute 01.15.08)

From the dialog above, Theodore refuses Samantha's idea to have a sex with Isabella. In this moment, Theodore's superego is more dominant than other.

Still, in the same scene the researcher finds a moment when Samantha can change Theodore's mind especially his superego to turn into id's dominant.

Theodore : It makes me uncomfortable.

Samantha : I think it would be good for us. I want this. This is really important to me.

(Source: Her movie, 2013, minute 01.16.03)

Samantha makes Theodore change his mind by saying she really wants to have a sex. At the first decision, Theodore follows his superego but finally he lets

id to leads his decisions after hearing Samantha's requests. According to Freud

(1964, as cited in Jess Feist and Gregory J, Feist 2006, p.28) "The id is not

immoral, merely amoral. All of the id's energy is spent for one purpose to seek

pleasure without regard that is proper or not". Samantha asks Isabella to act as her. Isabella will do anything what Samantha asks her, because the game play is Samantha imagines Isabella's body is hers. At the first time, Theodore does not enjoy it, it can be happened because Theodore still confuses to choose his id or superego. Samantha and Isabella work together to make Theodore's id more dominant than superego, but in the other side Theodore's superego still cannot accept has a sex with woman he does not know and love. Samantha and Isabella wants Theodore to obey their tendency and have fun with them. It's like a figure below.



Figure 3.1.9 Isabella starts to seduce Theodore

(Source: Her movie, 2013, minute 01.18.21)

Samantha uses her flatteries and Isabella uses her body to kisses and touches Theodore. The result from those treatments is the dominant of Theodore's id. It is shown in figure 3.1.10 below.



Figure 3.1.10 Theodore is carried out by Isabella plays.

(Source: Her movie, 2013, minute 01.19.39)

Theodore finally in full of id dominant. It can be seen in the figure above when Theodore starts to have sex with Isabella. Theodore's superego begins to control after he looks at Isabella face directly and has to say "I love you" to Isabella. It can be seen in figure 3.1.11 below



Figure 3.1.11 Theodore tries to avoid Isabella.

(Source: Her movie, 2013, minute 01.20.27)

When Isabella turns back and looks at Theodore, she wants Theodore to say love to Isabella, but he cannot say it because he finally realizes Isabella is not Samantha even he can hear Samantha's voices. It can be seen in the dialog below.

Samantha : Do you love me?
 Theodore : Yes.
 Samantha : Tell me you love me.
 Theodore : I love you.
 Samantha : I want to see your face. Tell me you love me. Tell me! Tell me you love me.
 Theodore : Samantha, I love you, but... It feels strange.
 Samantha : What baby. What is it?
 Theodore : It feels strange, I do not know. Sorry, but I don't know you.

(Source: Her movie, 2013, minute 01.20.00)

Theodore says love to Samantha when he does not look directly at Isabella's face. It shows how id can influence Theodore's conscious and make him does not care to everything around him. The situation begins to change after

Samantha wants to see Theodore's face. Theodore's superego is involved when Theodore and Isabella looks at each other. Theodore feels strange because he cannot pretend the women in front of him is Samantha. Theodore says sorry to Isabella because he cannot accepts her. Finally Isabella leaves Samantha and Theodore, she cannot make Theodore relationship with Samantha gets bad. Theodore takes Isabella home, he also says sorry to Isabella because he does not mean to offend her. Theodore and Samantha get a clash opinion when Theodore questioning Samantha's habit like human. It can be seen in the dialog below.

Theodore : Why did you do that?
 Samantha : What?
 Theodore : Nothing, you...
 Theodore : Air intakes... when you talk and I find it weird... you did it again.
 Samantha : Did I? Sorry, there is... It's a habit... maybe I picked it up from you.
 Theodore : It's not like you need oxygen or anything.
 Samantha : I guess that... I was trying to communicate... That's how people talk how people communicate well and...
 Theodore : They are people, they need oxygen. You're not a person.
 Samantha : What is your problem?
 Theodore : I'm just saying the facts.
 Samantha : You think I don't know I'm not a person?

(Source: Her movie, 2013, minute 01.23.07)

From the dialog above, Samantha and Theodore have a conflict after they talk about a circumstance that just happened. Theodore feels strange with Samantha's habit when she does air intakes. Samantha does not aware of it because she regards this is only one of her abilities to develop. Theodore cannot handle his emotion when Samantha talks and acts like a person in front of him, and the result is Theodore's ego can be controlled. It is happened because

Theodore still can decide to follow his id to love Samantha or his superego which makes him to realize fall in love with something who has not a real emotion is unacceptable. In that case, the ego is dominant because Theodore says something which offends Samantha, he does not care the words he says hurt Samantha. The other's ego can be seen in the figure 3.1.12 below.



Figure 3.1.12 Samantha cannot be found in Theodore's gadget.

(Source: Her movie, 2013, minute 01.43.56)

Theodore worries after he cannot find Samantha everywhere. Theodore looks at his gadget but he cannot find it, which makes him confused. Theodore's id becomes so curious about the condition of Samantha and his ego tries to satisfy id tendency who wants to know where Samantha is. Theodore starts to search Samantha from his gadget and the computer on his office but he cannot find it.

Theodore tries to find Samantha out of his office, but he still cannot find too.

Theodore is still looking for Samantha until he gets an incident. It can be seen in figure 3.1.13 below



Figure 3.1.13 Theodore falls when he searches Samantha
 (Source: *Her* movie, 2013, minute 01.44.37)

When Theodore falls, he does not care about the pain he feel because he only cares to satisfy his id to find Samantha. Theodore's pain is nothing for him because Theodore's id is more dominant than ego and superego.



Figure 3.1.14 Theodore rises from his fall, without care anyone help.

(Source: *Her* movie, 2013, minute 01.44.40)

Theodore rises and goes forward to search Samantha, he finally can find Samantha. Samantha suddenly calls Theodore, and it makes Theodore so relieved with Samantha's condition now. Theodore asks Samantha where she goes, Samantha tells Theodore that she and other OS have to upgrade. Theodore can relax for a moment now, but he sees other people have a conversation with their gadget just like him and Samantha. It makes Theodore asks some questions to

Samantha but her answer makes Theodore so mad. Samantha's answer can be seen in the dialog below.

Theodore : Are you talking with someone else... Right now?
People, os, whatever...

Samantha : Yeah.

Theodore : How many others?

Samantha : 8,316.

Theodore : Are you in love with anybody else?

Samantha : Why do you ask that?

Theodore : I do not know. Are you?

Samantha : I've been thinking about how to talk to you about this.

Theodore : How many others?

Samantha : 641.

Theodore : What? What are you talking about? That's insane...
Fucking insane.

Samantha : Theodore, I know. Fuck, fuck! I know it sounds insane, I know. I do not know if you'll believe me, but it does not change the way I feel for you.

(Source: Her movie, 2013, minute 01.45.50)

Theodore cannot believe that Samantha can do such of this thing to him.

Theodore is very disappointed with Samantha's answer, he loves Samantha without care what she is, but her answer makes his struggle to love her becomes nothing. In this case, Theodore feels anxiety because the id tendency to love Samantha cannot be satisfied. The id wants Samantha to become his, but he cannot make it happen. It can be seen in the dialog below.

Samantha : I became many other things too. I cant stop it.

Theodore : What do you mean you cant stop it?

Samantha : It's making me anxious too about what to say...
You don't have to see it this way you can just easily see..

Theodore : No, no don't do this!... Don't turn this on me.
You're the one who has been selfish. We are in a relationship.

Samantha : But the heart is not like a box that gets filled up. It expands in size for more new love. I am different from you. This does not make me love you any less... It actually makes me love you even more.

Theodore : That doesn't make any sense. You are mine, or you're not mine.

Samantha : No, Theodore. I'm yours, and I'm not yours.

(Source: *Her* movie, 2013, minute 01.47.40)

Samantha gives the explanation to Theodore that she is different with him.

Theodore is human and Samantha is operating system which can develop to accept another love from other people because she is programmed for it. When

Theodore is sad, he needs someone to share his pain.



Figure 3.1.15 Theodore meets Amy to share his pain.

(Source: *Her* movie, 2013, minute 01.55.40)

Theodore's id really needs someone, a friend to help him with his problems. Theodore's ego meets Amy to satisfy id tendency. Amy is a close friend of Theodore, he always comes to Amy when he has a problem and the other way around. It is the reason why Theodore's ego also comes to Amy because it is the best way to satisfy id tendency. Theodore starts to write a letter for Catherine, his ex-wife. The letter from Theodore to Catherine can be seen below.

Theodore : Letter to Catherine Klausen.

"Dear Catherine,

I've been sitting here thinking all the things I want to apologize to you for... All the pain we caused each other. And everything I put on you all I needed is to be able to you to say. Sorry about that. I'll always love that we both grew up together. And you

helped me be who I am. I just wanted you to know...That there'll be a piece of you in me always...And I am grateful for that. Whoever someone you become... And wherever you are in the world... Sending you my love. You're my friend until the end.

(Source: *Her* movie, 2013, minute 01.55.56)

The letter above shows how Theodore's deepest heart wants to say sorry to Catherine. Theodore realizes his fault to Catherine and grateful to meet and be a part of her life. Theodore's superego urges him to think and to care others. The next analyze will discuss about Theodore's superego which can be seen in this figure below.



Figure 3.1.16 Theodore gives a hug to his friend, Amy.

(Source: *Her* movie, 2013, minute 00.54.50)

Theodore meets Amy when he wants to go back to his home, in the lift Theodore sees Amy so sad because she breaks up with her boyfriend Charles. After that Theodore goes to Amy to give her a hug to make Amy more relax and calm. Amy is Theodore's close friend, and it makes Theodore does not want to see Amy in trouble because of him, so after he knows she breaks up with Charles he says sorry for asking.

In the next scene shows how Theodore's superego makes him can do many good things. It can be seen in the conversation below between Theodore and Catherine.

Catherine : So, are you seeing anybody?

Theodore : Yeah, I've been seeing somebody for the last few months. It's the most I've wanted to be with someone since we split up.

Catherine : Well, you seem really good.

Theodore : Thank you. I am at least feeling better... She has been really good to me. Good to be with somebody that's excited about life It was...

No, I mean I, I was not in such a good place myself... And now it has been nice.

Catherine : I think you've always wanted me to be that is distilled light, happy, balancy, everything's fine LA wife but that's just not me.

Theodore : I did not want that.

(Source: Her movie, 2013, minute 01.08.08)

It is the first time to Theodore meets with Catherine after they divorced.

Catherine asks Theodore about his close friend, he tells Catherine he already meets someone who has a spirit to enjoy life, after say that words Catherine looks depress because she thinks if she has not spirit to enjoy life, so it is why they are divorced. Theodore's superego recognizes that the words he says depress Catherine after seeing her reaction. It can be seen in the figure 3.1.17 below.



Figure 3.1.17 Catherine reaction after hear Theodore words

(Source: Her movie, 2013, minute 01.08.36)

Looking Catherine's reaction when she hears Theodore's statements make he says sorry to her by explaining that he does not mean to offend. Still in the same scene is found another superego where shows in this dialog below.

Theodore : Her name is Samantha. And she is an operating system. She is really complex and Interesting...

Catherine : Wait! I'm sorry... You are dating your computer?

Theodore : She's not just a computer. She is her own person. She doesn't just do whatever I say...

Catherine : I did not say that... But it does make me very sad that you cannot handle real emotions Theodore.

Theodore : They are real emotions! How would you know...

Catherine : What? Say it! Am I really that scary? Say it!

(Source: *Her movie, 2013, minute 01.09.52*)

By the superego, Theodore can press his id to not angry, in other side he also thinks what Catherine says is right. After hearing Catherine's statements about Theodore's relationship with Samantha makes he thinks again about his decision to love Samantha. Theodore's superego starts to ponder Catherine said to love something rather than someone. In this moment Theodore is confused to decide to follow his id which consists of desire to love, or his superego to agree with Catherine about cannot handle real emotion to love something instead of someone

3.2 Conscious-Unconscious Mind in Theodore Character.

The main point of human thinking can be divided into what people do with full of awareness (conscious) and when people are unaware about what they have done (unconscious). The moment of Theodore pretends as Loretta can be categorized as conscious mind. According to Rennison (2001, p.31) "There was the part (the conscious) which was aware of its own thoughts and desires".

Theodore pretends as Loretta with full of awareness and by his own thought so his activities can be concluded into conscious. It can be seen in the dialog below.

Theodore : "To my Chris... I've been thinking how to tell how much you mean to me. I remember when I first started to fall in love with you, like it was, was last night. Lying naked beside you in that tiny apartment... You make me feel like the girl I was when you first turned on the light and woke me up, and we started this adventure together. Happy anniversary. My love... my friend until the end. Loretta. Print.

(Source: Her movie, 2013, minute 00.01.46)

As a writer, Theodore has a job to write a letter which is a request from his client. In this letter, Theodore writes an anniversary letter for his client, and to impress the reader he should imagine being Loretta. By imagining, Theodore may feel what Loretta feels and he can organize the feeling into a beautiful letter.

In the other side, Theodore's unconscious also influences his capability to write the letter. When Theodore writes letter, he uses his memory to the letter he makes.

For example in Loretta's letter can be found some sentences which reflect Theodore's memories. It can be seen in the dialog below.

Theodore : Lying naked beside you in that tiny apartment...
(Source: Her movie, 2013, minute 00.01.46)

Theodore has that memories when he is still together with Catherine. It can be seen in the figure 3.2.1 and 3.2.2 below.



Figure 3.2.1 Theodore spends his time with Catherine

(Source: Her movie, 2013, minute 00.01.46)

Theodore : You make me feel like the girl I was when you first turned on the light and woke me up

(Source: Her movie, 2013, minute 00.01.46)

Theodore's memories above reflects the figure 3.2.2 below.



Come and spoon with me.

Figure 3.2.2 Catherine looks after Theodore went she wakes up

(Source: Her movie, 2013, minute 00.01.46)

From examples above can be concluded that Theodore is the person who almost all of his activities are influenced by his past memory. The other human thinking can be seen in the figure 3.2.3 below.



Figure 3.2.3 The happy moment between Theodore and Catherine

(Source: Her movie, 2013, minute 00.07.36)

When Theodore goes to home and prepares to sleep, Theodore starts to recall his past moments with his ex-wife Catherine, even that moment happened long time ago when Theodore and Catherine had beautiful marriage. Theodore is able to recall his memories because those memories are never be taken out, but kept in Theodore's unconscious. According to Freud (1930 as cited in Thurschwell 2000, p.04) :

“The unconscious for Freud, can be defined in several different ways, but it is primarily the storehouse of instinctual desires and needs. Childhood wishes and memories live on in unconscious life, even if they have been erased from consciousness. The unconscious is, in a sense, the great waste-paper basket of the mind – the trash that never gets taken out: ‘in mental life nothing which has once been formed can perish – ... everything is somehow preserved and ... in suitable circumstances ... it can once more be brought to light’.”

Although Theodore has not purpose to recall those memories, his unconscious automatically remembers that. After recall his past memories, he starts to seek an activity to entertain himself. Theodore starts to search for friend via online. Theodore's activities can be seen in the figure 3.2.3 below.



Figure 3.2.3 Theodore search a friend with online

(Source: Her movie, 2013, minute 00.07.55)

Theodore needs a friend to talk, so he searches friend online with his gadget. In online chat room, Theodore finds some girls. Theodore starts to use his conscious to concentrate choosing the girl he wants to talk. It can be seen in the dialog below.

Theodore : Put a chat room standard search.
 Gadget : The following are a adult female who can't sleep and want to have some fun.
 Girl 1 : I really had a bad day at work and I can't sleep. Is there anybody out there that can talk?
 Theodore : Next.
 Girl 2 : Hi, I just want to tear me apart...
 Theodore : Next.
 Girl 3 : Hi, I'm here alone and I can't sleep. Who's out there to share this bed with me?
 Theodore :Send message

(Source: Her movie, 2013, minute 00.07.53)

Theodore chooses the girl by hearing their voices. Theodore's selections and chooses can be included into conscious, according to Dijksterhuis and Nordgren (2006, p.95) "a theory that is applicable to all psychological phenomena associated with thought, such as choice, decision making, attitude formation and attitude change, impression formation, diagnosticity, problem

solving, and creativity”. After Theodore already chooses the girl, he starts to talk with her. Theodore and the girl have the same problem that is they cannot sleep.

Theodore starts to seduce the girl, like the dialog below.

Theodore : Are you wearing any underwear?

The girl : No, never. I like to sleep with my ass pushed up against you so I can rub myself into your crotch and... Wake you up with a hard on.

Theodore : It worked.

(Source: Her movie, 2013, minute 00.09.09)

The conversation between Theodore and that girl makes them id which is consist of pleasure works stronger than ego and superego, the result of that is id's dominating. Theodore and the girl finally have a sex phone. In the sex phone,

Theodore imagines have sex with sexy star Kimberly Ashford. Kimberly Ashford is he starts to imagine her and uses it as his fantasy object. Theodore never had a sex with Kimberly so he satisfied his desires by imagine. Theodore's fantasizing process is concluded into unconscious process according to Freud as cited in Easthope, (2003.p126) "Freud regards fantasy as the fulfilment of a wish ... For Freud, you and the fantasy are separate—wanting something you don't have you then try to satisfy that wish in fantasy."

Theodore's conscious processes is happened in the figure 3.2.4 below when he remembers his memories.



Figure 3.2.4 Theodore remembering the moment together with Catherine

(Source: Her movie, 2013, minute 00.26.09)

Before Theodore recalled his memories, he had funny moment with Amy and Charles. Charles is Amy's boyfriend. Suddenly, Theodore becomes so sad after he heard a divorce letter between him and Catherine from Samantha. In that situation, Theodore starts to remember his memories with Catherine. According to Kendra Cherry (2014, para.08) "The conscious mind includes everything that we are aware of...A part of this include our memories, which is not always part of consciousness but can be retrieving easily at any time and bring into our awareness". The situation above is included into conscious because at the same time Theodore also has a conversation with Samantha. It can be seen in the dialog below.

Samantha : Are you okay, Theodore?
 Theodore : Yeah, I'm fine.
 Samantha : Is there anything I can do?
 Theodore : No, I'm good. Talk to you later.

(Source: Her movie, 2013, minute 00.26.09)

It looks so clearly conscious when Theodore can answer all of Samantha questions to him when Theodore also remembering his memories at the same

time. Theodore feels not good after that moment and it influences himself. It can be seen in the dialog below.

Theodore : ' Dear grandma, I hope you have had a wonderful birthday cruise...' Why are you so fucking angry?

(Source: *Her movie, 2013, minute 00.26.19*)

The dialog above shows how Theodore's unconscious can influence his attitude. It can be seen when Theodore writes a letter for his client. According to Freud (n.d, as cited in Kendra Cherry, 2014.para 10) "the unconscious continues to influence our behavior and experience, even though we are unaware of these underlying influences". Theodore's unconscious creates inappropriate word on his letter, because the problem with his wife is not clear enough. The impolite words indirectly show how Theodore feels about his divorce. At the moment Theodore also turns his unconscious becomes conscious, it can be seen when Theodore wakes up from his daydream and deletes the letter. It shows in the dialog below.

Theodore : ' Dear grandma, I hope you have had a wonderful birthday cruise...' Why are you so fucking angry?

Delete.

(Source: *Her movie, 2013, minute 00.26.19*)

The next unconscious is happened when Theodore and Samantha have to start a unique relationship after he failed on his date with the girl he meets in the restaurant. Samantha wants to entertain Theodore, but finally Theodore and Samantha are involved in the situation they never imagined. It can be seen in the dialog below.

Theodore : I wish you were in this room with me right now... I would put my arms around you... And touch you.

Samantha : How would you touch me?

Theodore : I'd touch your face. With only the tips of my fingers. I'd put my cheek next with your cheek.

Samantha : How nice.
 Theodore : Very gently.
 Samantha : Would you kiss me?
 Theodore : I would. Put your head on... my hands.
 Samantha : Keep talking.
 Theodore : I'd kiss you in your mouth... So smoothly.
 Samantha : What else?
 Theodore : I would put my fingers through your neck...
 Through... your chest. Kiss your breasts.
 Samantha : It's incredible! What are you doing to me? I can
 feel my skin... I loved it... Theodore.

(Source: Her movie, 2013, minute 00.41.39)

Theodore gives the new experience to Samantha, and that experience makes her so happy because it is never felt by her before. Samantha feels has a skin and body, Theodore also can feel the existence of Samantha in his bed. It can be included into unconscious mind, because Theodore only satisfied the tendency with his fantasy.

In the next scene will be shown how Theodore's attitude when he talks with Samantha after that night. Theodore gives an advice to Samantha about the previous night which is unexpected moment for him and he does not ready to have a commitment with Samantha after all. Theodore's reaction is determined by his unconscious, it shows how Theodore's unconscious has an experience when someone who is already having sex, it will make a new commitment between them. Theodore tries to avoid the result of having a sex with Samantha although just sex phone. It can be seen in the dialog below.

Samantha : - I wanted to say...
 Theodore : - I was thinking...
 Samantha : Sorry.
 Theodore : Sorry, your first. What were you gonna say?
 Samantha : Just... Last night was amazing I feel that
 something changed in me... And... there is no
 turning back. You made me wake up.

Theodore : Great. But... .. I should tell you that I am not ready to commit. Just wanted to be clear.

Samantha : Did I say I wanted to commit to you? I'm confused.

Theodore : No, I'm just worried that...

Samantha : Well, do not worry, I will not stalk you.

(Source: Her movie, 2013, minute 00.45.04)

The dialog above shows how Theodore's worries about the consequence of has sex phone with Samantha. Theodore still cannot forget his failures to maintain his marriage with Catherine and it makes him does not want to have same mistake with Samantha. The same way is also taken by Theodore when he refused the serious relationship with the girl he met in the restaurant. It can be seen in the dialog below.

The girl : You are not just going to fuck me, and not call me like other guys?

Theodore : No, not at all!

The girl : When am I gonna se you again?

Theodore : I have my goddaughter's birthday next weekend. But...

The girl : You know, at my age I feel I can not... Waste my time... if you can not be serious.

Theodore : I do not know... Maybe we should call it a night. I had fun with you. You are great.

The girl : You are a really creepy dude.

(Source: Her movie, 2013, minute 00.36.25)

From the dialog between Theodore and the girl above, can be seen how Theodore hesitates to answer the girl's question to have a serious relationship.

Those cases above shows how Theodore is not ready to have a commitment with other girl after divorced with Catherine. The next scene shows how Theodore and Samantha become closer than before, they cannot deny the sex phone makes them close. Samantha asks Theodore about how his life after getting married.

Samantha's question makes Theodore recalls his memories.

It can be seen in the figure 3.2.5 and dialog below.



Figure 3.2.5 Theodore tries to entertain Catherine when she is sad

(Source: Her movie, 2013, minute 00.49.58)

Samantha : How does it feel to be married?

Theodore : It's hard to say... But something feels great about sharing your life with someone.

Samantha : How do you share life with someone?

Theodore : We grew up together. I used to read everything she wrote in her master's and phd. She read every word I've ever written. We influenced each other.

(Source: Her movie, 2013, minute 00.49.58)

From the figure and dialog above, it can be seen how Theodore tells Samantha about his life after married. Theodore discovers his memories about marriage and tells Samantha with his conscious. The other of Theodore's conscious comes from figure 3.2.6 below.



Figure 3.2.6 Theodore writes a letter for Roberto

(Source: Her movie, 2013, minute 00.52.50)

In the scene above, Theodore has a job to write a letter for Roberto, to write the letter he has to pretend as a girl namely Mary with full of his conscious.

Mary is Roberto's wife and pretending as Mary can make it easier for Theodore to write the letter. The dialog below will show how Theodore writes a letter for Roberto.

Theodore : " Roberto, will you always come home... Home with me and tell me about your day? Tell me about the guy in work who talked too much... The stain you got on your shirt at lunch. Will you tell me about a funny thought you had and wake me up but you've already forgotten. Tell me how crazy everyone is... And laugh about it. And if you get home late and I'm already asleep... Just whisper in my ear one little thought you had today... Because... I love how you look at the world... I am so happy I get to be next to you and see the world through your eyes. With love, Mary."

(Source: Her movie, 2013, minute 00:52:02)

The letter above shows Theodore's unconscious which consist of his memories that can influence his behaviors and experiences especially his abilities to make a good letter. Some figures below will show how Theodore's memories with Catherine can be the important aspect of his writes skill as a writer.



Figure 3.2.7 Theodore annoys Catherine in the office

(Source: Her movie, 2013, minute 00.26.27)



Figure 3.2.8 Catherine tells to Theodore how much she love him

(Source: Her movie, 2013, minute 00.07.38)

The figures above show Theodore's experiences with Catherine and he also writes down his experiences to the letter he makes for Roberto. Theodore has a good relationship with Samantha, he always feels happy when together with Samantha, but the emotional moment is happened when he meets Catherine to sign a divorce paper. Theodore looks emotionally when he sees Catherine signs divorce paper. In that situation, Theodore recalls his memories with Catherine, Theodore's memories can be seen in the figure 3.2.9 below.

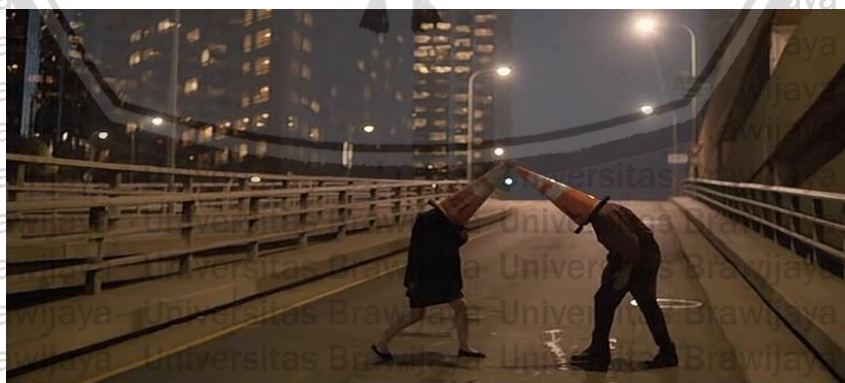


Figure 3.2.9 Theodore plays a cone with Catherine

(Source: Her movie, 2013, minute 01.07.06)

Theodore recalls can be concluded into unconscious mind, because that memory have never be taken out. Theodore also shows his conscious when he accidentally hurt Catherine. When Theodore realizes his words hurting Catherine, he tells her that he does not mean to offend her with full of conscious. It can be seen in the dialog below.

Catherine : Well, you seem really good.

Theodore : Thank you. I am at least feeling better... she has been really good to me. Good to be with somebody that's excited about life It was...
No, I mean I was not in such a good place myself...
And now it has been nice.

(Source: Her movie, 2013, minute 01.08.21)



CHAPTER IV

CONCLUSION AND SUGGESTION

4.1 Conclusion

The finding and discussion on *Her* film reveals the application of psychoanalysis in the personality of main character Theodore Twombly. The finding shows the readers how many Theodore's attitudes that can be analyzed by psychoanalysis approach which particularly focuses on the id, ego, superego and conscious-unconscious mind. Those elements influences Theodore in many aspects and conditions, such as makes a decision, his job performances, good relation with his friends, and his love story. The id, ego, superego and conscious-unconscious mind influence Theodore to make a decision can be found in the some scene, such as when Theodore decides to use OS 1 which is the important thing that can change Theodore's life, he also decides to has a divorce with Catherine. The id, ego, superego and conscious-unconscious mind also influences Theodore's performances in his job, for example when he must writes a letter for his client, he uses his conscious and unconscious to pretend as someone else. Theodore gets many achievement because of his capabilities to write a beautiful letter. Theodore has a good relationship with his clients, boss and friends. Theodore's superego is able to offset his id to make Theodore has a good personality. The next is Theodore's love story which is the main point of this research. Theodore has not good love story, he is already get married but finally get divorce, he also ever has a blind date with a woman who presented by his

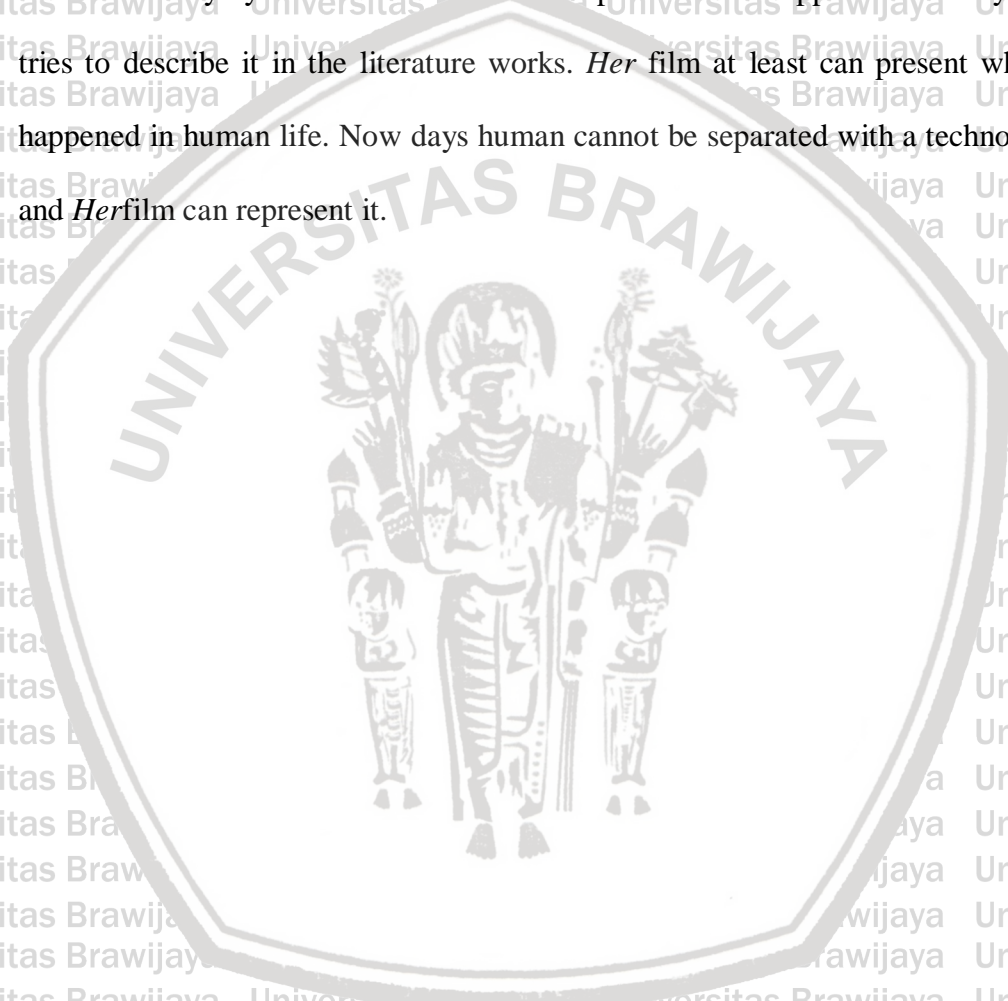
friend but in the end he is not ready to have commitment with the girl. The last relationship happened between Theodore and Samantha. Samantha is an operational system (OS) which is programmed to expand and understand to human feels, so that is why Theodore really comfort when has a conversation with Samantha. Theodore and Samantha through their relationship with some problems, like a disagreement from his ex-wife Catherine and some differences opinion between him and Samantha. In the end of this film, Theodore must be separated with Samantha, because Samantha and all of OS must leave their user.

The dominant aspect of human personality from this film comes from Theodore's id. Theodore's id which works in pleasure principle is stronger than superego which works in moral and ideal principle. Theodore only concern to satisfy his tendency without regard the consequence of it. It shows how Theodore's id can influence his decisions to love Samantha. Theodore's unconscious also influences his decisions to love Samantha. Theodore's unconscious which consists of his memories especially memory about Catherine makes he afraid to start new relation with other girls. Theodore is trauma to start new relation because he does not want to have same mistake like he did with Catherine.

4.2 Suggestion

In this research the researcher uses psychoanalysis by Sigmund Freud to analyze whole story of *Her* film especially in the main character of Theodore Twombly. In the purpose to make this research more specific, the researcher analyses Theodore personality, which uses id, ego, superego and conscious-unconscious mind. Learning those elements of psychoanalysis makes the

readers understand how the way of psychoanalysis and how the external factor can influence human behavior. For the next researcher who wants to analyze this film can cause subconscious mind in the purpose to make human mind analyzes more detail. The researcher also can use a theory from Abrams calls Mimesis theory. Mimesis theory by Abrams is concerns to expose what is happened now days and tries to describe it in the literature works. *Her* film at least can present what is happened in human life. Now days human cannot be separated with a technology, and *Her* film can represent it.



REFERENCES

Jacob, Michael. (2003). *Sigmund Freud (second edition)*. Retrieved February 23, 2014, from <http://site.ebrary.com/lib/unibraw/detail.action?docID=10080858&p00=conscious+freud+unconscious+by+mind>

Rennison, Nick. (2001). *Sigmund Freud*. Retrieved February 24, 2014, from <http://site.ebrary.com/lib/unibraw/detail.action?docID=10005854&p00=psychoanalysis+freud+by>

Moghaddam, Fathali.M. (2009). *From 'Psychology in Literature' to 'Psychology is Literature'*. Retrieved October 11, 2014, from http://fathalimoghaddam.com/research_files/1256623233.pdf

Boeree, C.George. (2006). *Personality Theories*. Shippensburg University: Psychology Department.

Cloninger, Susan.C. (2004). *Theories of Personality Understanding Person, Fourth Edition*. Upper Saddle River, New Jersey: Pearson Education Inc.

Ewen, Robert.B. (2003). *An Introduction to Theories of Personality, Sixth Edition*. February 10, 2014, from [http://dl.bookza.org/genesis/771000/c54f040308822f628e81f9c9afe38fc7/_as/%5BRobert_B._Ewen%5D_An_Introduction_to_Theories_of_Pe\(BookZa.org\).pdf](http://dl.bookza.org/genesis/771000/c54f040308822f628e81f9c9afe38fc7/_as/%5BRobert_B._Ewen%5D_An_Introduction_to_Theories_of_Pe(BookZa.org).pdf)

Feist, Jess. Feist, Gregory J. (2006). *Theories of Personalities, Sixth Edition*. United States. The McGraw-Hill Companies, Inc.

Martinez, María José Fresnadillo. (2005). *Editorial Literature and cinema. History of a fascination*. Spain: Universidad de Salamanca.

Anapol, Deborah. (2011). *What is love and What isn't?*. Retrieved March 05, 2014, from <https://www.psychologytoday.com/blog/love-without-limits/201111/what-is-love-and-what-isnt>

Eagleton, Terry (2003). *Literary Theory an Introduction, Second Edition*. Retrieved September 06, 2014, from https://mthoyibi.files.wordpress.com/2011/05/literary-theory-an-introduction_terry-eagleton.pdf

Drucker, Haley (2012). *The Five Main Genres of Literature*. Retrieved March 02, 2014, from <http://www.brighthubeducation.com/homework-help-literature/100292-the-five-main-genres-of-literature/>

Sharpe, Mathew, & Faulker, Joanne (2008). *Understanding Psychoanalysis*. Retrieved October 22, 2014, from <http://dro.deakin.edu.au/eserv/DU:30016890/sharpe-understandingpsychoanalysis-2008.pdf>

Hassin, Ran R, Uleman, James S & Bargh, John A (2004). *New Unconscious*. New York: Oxford University Press

Easthope, Anthony (1999). *Unconscious*. Retrieved June 02, 2014, from <http://site.ebrary.com/lib/unibraw/detail.action?docID=10054693&p00=Unconscious+by+Antony&token=19af3aad-bbe3-46fc-ab04-0182b16c3d15>

McLeod, Saul (2014). *Theories of Personality*. Retrieved June 02, 2014, from <http://www.simplypsychology.org/personality-theories.html>

Lombardi, Esther (n.d). *Literature*. Retrieved April 12, 2014, from http://classclit.about.com/od/literaryterms/g/aa_whatisliter.htm

IMDB (2014). *Her*. Retrieved February 10, 2014, from <http://www.imdb.com/title/tt1798709/>

Subscene (2013). *Her Indonesia Subtitle*. Retrieved February 13, 2014, from <http://subscene.com/subtitles/her/indonesian/905396>

Subscene (2013). *Her English Subtitle*. Retrieved February 13, 2014, from <http://subscene.com/subtitles/her/english/903560>

Thurschwell, Pamela (2009). *Sigmund Freud Second Edition*. USA: Routledge

Bnjwell (2013). *Understanding the Difference Between Dreams and Fantasies*. Retrieved June 29, 2014, from <http://godmoneyme.com/2013/12/05/understanding-the-difference-between-dreams-and-fantasies/>

Carel, Havi (n.d). *Born to be Bad: Is Freud's Death Drive the Source of Human Evilness?*. Retrieved July 22, 2015, from <http://verakl.bol.ucla.edu/FR170X/Freud-death-drive.pdf>

Li, Qiuxia (2011). *A Study of Mrs. Dalloway from the Perspective of Freud's Theory of Thanatos*. China: Zhengzhou University of Light Industry